

Product datasheet for RC213493L1

LYNX1 (NM_177476) Human Tagged Lenti ORF Clone

Product data:

Product Type:	Expression Plasmids
Product Name:	LYNX1 (NM_177476) Human Tagged Lenti ORF Clone
Tag:	Myc-DDK
Symbol:	LYNX1
Mammalian Cell Selection:	None
Vector:	pLenti-C-Myc-DDK (PS100064)
E. coli Selection:	Chloramphenicol (34 ug/mL)
ORF Nucleotide Sequence:	The ORF insert of this clone is exactly the same as(RC213493).
Restriction Sites:	Sgfl-MluI
Cloning Scheme:	

Cloning sites used for ORF Shuttling:



* The last codon before the Stop codon of the ORF.

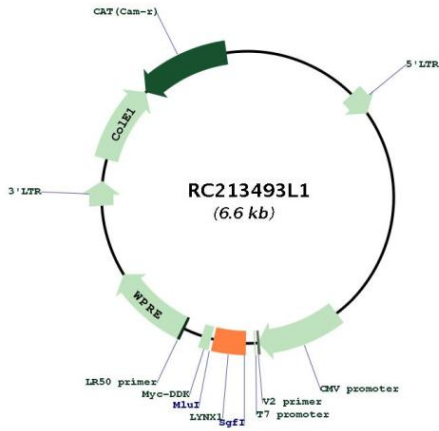
ACCN:	NM_177476
ORF Size:	235 bp



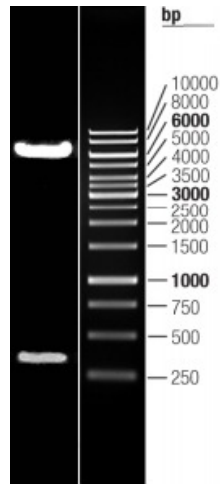
[View online >](#)

OTI Disclaimer:	The molecular sequence of this clone aligns with the gene accession number as a point of reference only. However, individual transcript sequences of the same gene can differ through naturally occurring variations (e.g. polymorphisms), each with its own valid existence. This clone is substantially in agreement with the reference, but a complete review of all prevailing variants is recommended prior to use. More info
OTI Annotation:	This clone was engineered to express the complete ORF with an expression tag. Expression varies depending on the nature of the gene.
Components:	The ORF clone is ion-exchange column purified and shipped in a 2D barcoded Matrix tube containing 10ug of transfection-ready, dried plasmid DNA (reconstitute with 100 ul of water).
Reconstitution Method:	<ol style="list-style-type: none">1. Centrifuge at 5,000xg for 5min.2. Carefully open the tube and add 100ul of sterile water to dissolve the DNA.3. Close the tube and incubate for 10 minutes at room temperature.4. Briefly vortex the tube and then do a quick spin (less than 5000xg) to concentrate the liquid at the bottom.5. Store the suspended plasmid at -20°C. The DNA is stable for at least one year from date of shipping when stored at -20°C.
RefSeq:	NM_177476.1
RefSeq Size:	663 bp
RefSeq ORF:	351 bp
Locus ID:	66004
UniProt ID:	P0DP58
Cytogenetics:	8q24.3
Protein Families:	Druggable Genome
MW:	12.5 kDa
Gene Summary:	This gene encodes a GPI-anchored, cell membrane bound member of the Ly6/uPAR (LU) superfamily of proteins containing the unique three-finger LU domain. This protein interacts with nicotinic acetylcholine receptors (nAChRs), and is thought to function as a modulator of nAChR activity to prevent excessive excitation. Alternatively spliced transcript variants have been found for this gene. Read-through transcription between this gene and the neighboring downstream gene (SLURP2) generates naturally-occurring transcripts (LYNX1-SLURP2) that encode a fusion protein comprised of sequence sharing identity with each individual gene product. [provided by RefSeq, Sep 2017]

Product images:



Circular map for RC213493L1



Double digestion of RC213493L1 using SgfI and MluI