

Product datasheet for **RC213488**

CRMP4 (DPYSL3) (NM_001387) Human Tagged ORF Clone

Product data:

Product Type:	Expression Plasmids
Product Name:	CRMP4 (DPYSL3) (NM_001387) Human Tagged ORF Clone
Tag:	Myc-DDK
Symbol:	CRMP4
Synonyms:	CRMP-4; CRMP4; DRP-3; DRP3; LCRMP; ULIP; ULIP-1
Mammalian Cell Selection:	Neomycin
Vector:	pCMV6-Entry (PS100001)
E. coli Selection:	Kanamycin (25 ug/mL)



[View online »](#)

ORF Nucleotide Sequence:

>RC213488 representing NM_001387
 Red=Cloning site Blue=ORF Green=Tags(s)

TTTTGTAATACGACTCACTATAGGGCGGCCGGAATTCGTCGACTGGATCCGGTACCGAGGAGATCTGCC
 GCC**CGGATCGCC**

ATGTCCTACCAAGCAAGAAGAACATCCCAGGATCACGAGTGACCGTCTCCTTATCAAGGGAGGCAGAA
 TCGTCAATGATGATCAGTCCTTTTATGCTGATATTACATGGAAGATGGCTTAATAAAACAAATTGGAGA
 CAATCTGATTGTTCTGGAGGAGTGAAGACCATTGAAGCCAATGGGAAGATGGTATCCCTGGAGGCATC
 GATGTCCATACTCACTTCCAGATGCCATATAAGGGAATGACCACAGTAGATGACTTCTTCCAAGGGACAA
 AGGCGGCCTTAGCAGGTGGCACCACCATGATCATTGACCATGTGGTGCCTGAGCCTGAGTCCAGCCTGAC
 TGAGGCCATGAGAAATGGAGAGAGTGGCTGATGGGAAGAGTTGCTGTGACTATGCCCTGCATGTGGAC
 ATCACCCTGGAATGACAGCGTCAAGCAGGAAGTGCAGAACCTCATCAAGGACAAAGGGTTAACTCCT
 TCATGGTTTATATGGCTTATAAGGATTTGTATCAAGTATCTAACACAGAGCTCTATGAGATCTTCACCTG
 CCTGGGAGAGCTGGGGCCATTGCTCAAGTTCATGCTGAGAATGGGGATATCATTGCCAGGAGCAAACC
 CGCATGTTGAAAATGGGGATAACTGGCCAGAAGGCCATGTAAGTGCAGGAGCCAGAAAGAGCTGGAAGCTG
 AGGCTGTGTTCCGTGCCATCACCATTGCCAGCCAAACCAATTGCCCTCTCTACGTCAAAAAGGTCATGAG
 CAAGAGTGCAGCTGACCTCATCTACAAGCCAGGAAAAAGGAAATGTAGTCTTTGGTGAGCCCATCACT
 GCCAGCCTCGGCATAGATGGAACCCATTATTGGAGCAAGAAGTGGCCAGGCGGCTGCATTTGTGACAT
 CCCCACCCTGAGCCCTGACCCAACTACTCCGGACTACATCAACTCCTTGCTGGCCAGCGGGGATCTGCA
 GCTATCTGGGAGTGGCCACTGCACCTTCAGCACTGCCAGAAAGCAATTGGGAAGGACAACCTTACAGCC
 ATTCCTGAGGGCACCAATGGTGTGGAGGAGCGGATGTCTGTCTGTTGGACAAGGCTGTGGCCACAGGGA
 AAATGGACGAAAACCAAGTTCGTGGCTGTGACAAGCACAACCGTCCCAAGATCTTCAACCTGTATCCCCG
 CAAGGGAAGAATATCTGTGGGTTCTGACAGCGACCTCGTCACTGGGATCCAGATGCTGTGAAGATCGTC
 TCTGCCAAGAACCACAGTCTGCGGCAGAGTACAACATCTTTGAAGGGATGGAGCTGCGCGGGGCTCCTC
 TGGTTGCATCTGCCAGGGCAAGATCATGCTGGAAGATGGCAACCTGCACGTGACCCAGGGGGCTGGCCG
 CTTCATACCCTGCAGCCGTTCTCCGACTATGTCTACAAGCGCATTAAAGCACGGAGGAAGATGGCAGAC
 CTGCATGCCGTCCAAGGGGCATGTACGATGGGCCTGTGTTTACCTGACCACCACCCCAAGGTGGCA
 CCCCCGAGGCTCTGCTCGGGGCTCTCTACTCGGCCGAACCCACCTGTGAGGAATCTTCATCAGTCGGG
 ATTTAGCCTGTCAGGCACCCAAGTGGATGAGGGGTTCTGCTCAGCCAGCAAGCGCATCGTGGCGCCCA
 GCGGCGCTTCTAATATCACATCTCTGAT

ACGCGTACGCGGGCCGCTCGAGCAGAAACTCATCTCAGAAGAGGATCTGGCAGCAAATGATATCCTGGATT
 ACAAGGATGACGACGATAAGGTTTAA

Protein Sequence:

>RC213488 representing NM_001387
 Red=Cloning site Green=Tags(s)

MSYQGKKNIPRITSDRLLIKGGRIVNDDQSFYADIYMEDGLIKQIGDNLIVPGGVKTIENGKMPVIPP
 DVHTHFQMPYKGMTTVDFFQGTKAALAGGTTMIIDHVPEPESSLTEAYEKWREWADGKSCCDYALHVD
 ITHWNSVKQEVQNLIKDKGVNSFMVYMAKDLQVSNTELVEIFTCLGELGAIQVHAENGDIIEAQQE
 RMLEMIGITGPEGHVLSRPEELEAEAVFRAITIASQTNCPLYVTKVMSKSAADLISQARKKGNVVFGE
 PITASLGIDGTHYWSKNWAKAAAFVTSPLSPDPTTPDYINSLASGDLQLSGSAHCTFSTAQKAIKDNFTA
 IPEGTNGVEERMSVIWDKAVATGKMDENQFVAVTSTNAKIFNL YPRKGRISVGSDDLVIWDPDAVKIV
 SAKNHQSAAEYNI FEGMELRGAPLVVICQGKIMLEDGNLHVTQGAGRIFPCSPFSDYVYKRIKARRK
 MADLHAVPRGMYDGPVFDLTTTPKGGTPAGSARGSPTRPNPPVRNLHQSGFSLSGTQVDEGVRSAKRI
 VAPPGRSNITSLS

TRTRPLEQKLI SEEDLAANDILDYKDDDDKV

Chromatograms:

https://cdn.origene.com/chromatograms/mk6167_e07.zip

Restriction Sites:

Sgfl-Mlul

Cloning Scheme:


ACCN: NM_001387

ORF Size: 1710 bp

OTI Disclaimer: The molecular sequence of this clone aligns with the gene accession number as a point of reference only. However, individual transcript sequences of the same gene can differ through naturally occurring variations (e.g. polymorphisms), each with its own valid existence. This clone is substantially in agreement with the reference, but a complete review of all prevailing variants is recommended prior to use. [More info](#)

OTI Annotation: This clone was engineered to express the complete ORF with an expression tag. Expression varies depending on the nature of the gene.

Components: The ORF clone is ion-exchange column purified and shipped in a 2D barcoded Matrix tube containing 10ug of transfection-ready, dried plasmid DNA (reconstitute with 100 ul of water).

Reconstitution Method:

1. Centrifuge at 5,000xg for 5min.
2. Carefully open the tube and add 100ul of sterile water to dissolve the DNA.
3. Close the tube and incubate for 10 minutes at room temperature.
4. Briefly vortex the tube and then do a quick spin (less than 5000xg) to concentrate the liquid at the bottom.
5. Store the suspended plasmid at -20°C. The DNA is stable for at least one year from date of shipping when stored at -20°C.

RefSeq: [NM_001387.3](#)

RefSeq Size: 5066 bp

RefSeq ORF: 1713 bp

Locus ID: 1809

UniProt ID: [Q14195](#)

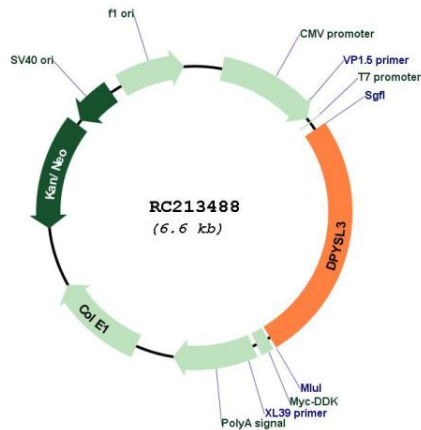
Cytogenetics: 5q32

Domains: Amidohydro_1

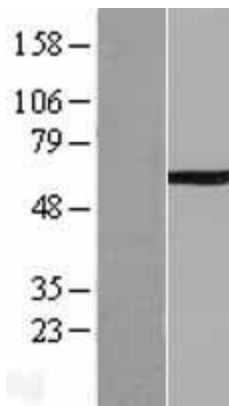
MW: 61.8 kDa

Gene Summary: Necessary for signaling by class 3 semaphorins and subsequent remodeling of the cytoskeleton. Plays a role in axon guidance, neuronal growth cone collapse and cell migration (By similarity).[UniProtKB/Swiss-Prot Function]

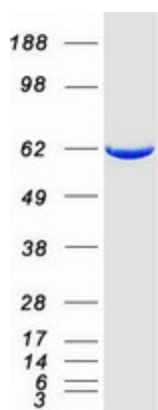
Product images:



Circular map for RC213488



Western blot validation of overexpression lysate (Cat# [LY400542]) using anti-DDK antibody (Cat# [TA50011-100]). Left: Cell lysates from untransfected HEK293T cells; Right: Cell lysates from HEK293T cells transfected with RC213488 using transfection reagent MegaTran 2.0 (Cat# [TT210002]).



Coomassie blue staining of purified DPYSL3 protein (Cat# [TP313488]). The protein was produced from HEK293T cells transfected with DPYSL3 cDNA clone (Cat# RC213488) using MegaTran 2.0 (Cat# [TT210002]).