

## Product datasheet for **RC213482**

### **PAX7 (NM\_002584) Human Tagged ORF Clone**

#### **Product data:**

Product Type:	Expression Plasmids
Product Name:	PAX7 (NM_002584) Human Tagged ORF Clone
Tag:	Myc-DDK
Symbol:	PAX7
Synonyms:	HUP1; MYOSCO; PAX7B; RMS2
Mammalian Cell Selection:	Neomycin
Vector:	pCMV6-Entry (PS100001)
E. coli Selection:	Kanamycin (25 ug/mL)



[View online »](#)

**ORF Nucleotide Sequence:**

>RC213482 representing NM\_002584  
 Red=Cloning site Blue=ORF Green=Tags(s)

TTTTGTAATACGACTCACTATAGGGCGGCCGGAATTCGTCGACTGGATCCGGTACCGAGGAGATCTGCC  
 GCC**CGCATCGCC**

ATGGCGGCCCTTCCCGGCACGGTACCGAGAATGATGCGGCCGGCTCCGGGCAGAACTACCCCGCACGG  
 GATTCCTTTGGAAGTGTCCACCCCGCTTGGCCAAGGCCGGTCAATCAGCTGGGAGGGTCTTCATCAA  
 TGGGCGACCCCTGCCTAACCCACATCCGCCACAAGATAGTGGAGATGGCCACCATGGCATCCGGCCCTGT  
 GTCATCTCCCGACAGCTGCGTGTCTCCACGGCTGCGTCTCCAAGATTCTTTGCCGTACCAGGAGACCG  
 GGTCCATCCGGCCTGGGGCCATCGGCGGCAGCAAGCCAGACAGGTGGCGACTCCGGATGTAGAGAAAA  
 GATTGAGGAGTACAAGAGGGAAAACCCAGGCATGTTAGCTGGGAGATCCGGGACAGGCTGCTGAAGGAT  
 GGGCACTGTGACCGAAGCACTGTGCCCTCAGGTTTAGTGAGTTCGATTAGCCGCTGCTCAGAATCAAGT  
 TCGGGAAGAAAGAGGAGGAGGATGAAGCGGACAAGAAGGAGGACGACGGGAAAAGAAGGCCAAACACAG  
 CATCGACGGCATCTGGGCGACAAGGGAAACCGCTGGACGAGGGCTCGGATGTGGAGTCGGAACCTGAC  
 CTCCACTGAAGCGCAAGCAGCGACGCAGTCGGACCACATTCACGGCCGAGCAGCTGGAGGAGCTGGAGA  
 AGGCCTTTGAGAGGACCCACTACCCAGACATATACACCCGCGAGGAGCTGGCGCAGAGGACCAAGCTGAC  
 AGAGGCGCGTGTGCAAGTCTGGTTCAGTAAACCGCCGCGCCGTTGGCGTAAGCAGGCAGGAGCAACCGAG  
 CTGGCGCGCTTCAACCACCTTCTGCCAGGAGGCTTCCCGCCACCGGCATGCCACGCTGCCCCCTACC  
 AGCTGCCGGACTCCACCTACCCACCACCACCTCTCCAAGATGGGGCAGCACTGTGCACCGGCTCA  
 GCCCTGCCACCGTCCACCATGCACCAGGGCGGCTGGCTGCAGCGGCTGCAGCCGCCACACCAGCTCT  
 GCCTACGGAGCCGCCACAGCTTCTCCAGTACTCTGACAGCTTCATGAATCCGGCGCGCCCTCCAACC  
 ACATGAACCCGGTCAGCAACGGCTGTCTCCTCAGGTGATGAGCATCTTGGGCAACCCCAAGCTGCGGTGCC  
 CCGCAGCCACAGGCTGACTTCTCCATCTCCCGCTGCATGGCGCCTGGACTCGGCCACCTCCATCTCA  
 GCCAGTGCAGCCAGCGGCCGACTCCATCAAGCCAGGGGACAGCCTGCCACCTCCAGGCCTACTGCC  
 CACCCACCTACAGCACCACCGGCTACAGCGTGGACCCCGTGGCCGGCTATCAGTACGGCCAGTACGGCCA  
 GAGTGAGTGCCTGGTGCCTGGGCGTCCCCGTCCTTCTCCACCCCGAGGCGCTCCTGCTTG  
 TTTATGGAGAGCTACAAGGTGGTGTGAGGGTGGGAATGTCCATTCACAGATGGAAAAATTGAAGTCCA  
 GCCAGATGGAACAGTTCACC

**ACGCGT**ACGCGGCCGCTCGAGCAGAACTCATCTCAGAAGAGGATCTGGCAGCAAATGATATCTGGATT  
 ACAAGGATGACGACGATAAGGTTTAA

**Protein Sequence:**

>RC213482 representing NM\_002584  
 Red=Cloning site Green=Tags(s)

MAALPGTVPRMMPAPGQNYPRTFPLEVSTPLGQGRVNLGGVFINRPLPNHIRHKIVEMAHHGIRPC  
 VISRQLRVSHGCVSKILCRYQETGSIRPGAIGGSKPRQVATPDVEKKIEEYKRENPGMFSWEIRDRLKLD  
 GHCDRSTVPSGLVSSISRVLRIFGKKEEEDADKEDDGEKKAKHSIDGILGDKGNRLDEGSDVESEPD  
 LPLKRKQRRSRTTFTAEQLEELEKAFERTHYPIYTRRELAQRKLTARVQVWF SNRRARWRKQAGANQ  
 LAAFNHLPLPGFPPTGMPTLPPYQLPDSTYPTTTISQDGGSTVHRPQLPPSTMHQGLAAAAAADTSS  
 AYGARHSFSSYSDSFMNPAAPSNHMNPVSNGLSPQVMSILGNPSAVPPQPQADFSISPLHGGLDSATSIS  
 ASCSQRADSIKPGDSLPTSQAYCPPTYSTTGYSVDPVAGYQYQYQSECLVPWASPVPIPSPTPRASCL  
 FMESYKVVSGWMSISQMEKLLKSSQMEQFT

**TRTRPLEQKLI**SEEDLAANDILDYKDDDDKV

**Chromatograms:**

[https://cdn.origene.com/chromatograms/mk6102\\_d03.zip](https://cdn.origene.com/chromatograms/mk6102_d03.zip)

**Restriction Sites:**

Sgfl-MluI



RefSeq Size: 2272 bp

RefSeq ORF: 1563 bp

Locus ID: 5081

UniProt ID: [P23759](#)

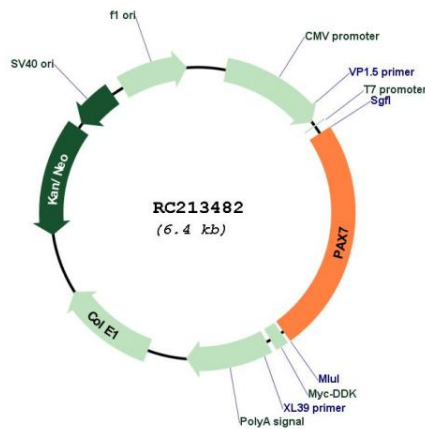
Cytogenetics: 1p36.13

Protein Families: Adult stem cells, Druggable Genome, Embryonic stem cells, ES Cell Differentiation/IPS, Transcription Factors

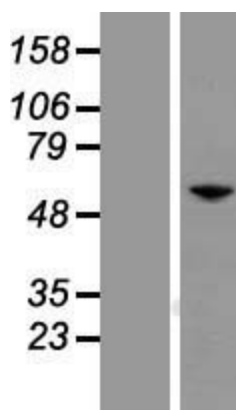
MW: 56.7 kDa

**Gene Summary:** This gene is a member of the paired box (PAX) family of transcription factors. Members of this gene family typically contain a paired box domain, an octapeptide, and a paired-type homeodomain. These genes play critical roles during fetal development and cancer growth. The specific function of the paired box 7 gene is unknown but speculated to involve tumor suppression since fusion of this gene with a forkhead domain family member has been associated with alveolar rhabdomyosarcoma. Three transcript variants encoding different isoforms have been found for this gene. [provided by RefSeq, Sep 2008]

**Product images:**



Circular map for RC213482



Western blot validation of overexpression lysate (Cat# [LY419235]) using anti-DDK antibody (Cat# [TA50011-100]). Left: Cell lysates from untransfected HEK293T cells; Right: Cell lysates from HEK293T cells transfected with RC213482 using transfection reagent MegaTran 2.0 (Cat# [TT210002]).