

## Product datasheet for **RC213479**

### **NKAPD1 (NM\_018195) Human Tagged ORF Clone**

#### Product data:

Product Type:	Expression Plasmids
Product Name:	NKAPD1 (NM_018195) Human Tagged ORF Clone
Tag:	Myc-DDK
Symbol:	NKAPD1
Synonyms:	C11orf57
Mammalian Cell Selection:	Neomycin
Vector:	pCMV6-Entry (PS100001)
E. coli Selection:	Kanamycin (25 ug/mL)
ORF Nucleotide Sequence:	>RC213479 ORF sequence Red=Cloning site Blue=ORF Green=Tags(s)

TTTTGTAATACGACTCACTATAGGGCGGCCGGAATTCGTCGACTGGATCCGGTACCGAGGAGATCTGCC  
GCC**CGGATCGCC**

ATGTCCCGGATTCCACTGGGGAAGGTCCTCCTGAGGAATGTCATCCGGCACACAGATGCTCACAATAAGA  
TTCAGGAGGAATCAGATATGTGGGAAATAGAGAACTGGAAAAACAGATGGAAGATGCTTACCGGGGAC  
CAAAGGAAAATGCTACCCAGCAGTTCAAGCCGGATGCGCAGTGATGGTTTTGATGAAGAAAGTCAAAGA  
TACTATTGGAGGCCAAAGAATGAAATTTCTGGGACTGGAAGATGATTTTCTTAAGGCTAAATCCTGGA  
ATAAAAAGTTCTATGATTATGAAGCAAACATGCCAGACAGATGGGGTACAGTGGTTATAAAGAGTTATA  
CCCTGAAGAATTTGAAACAGACAGTAGTGATCAGCAAGATATTACCAACGGGAAGAAAACATCTCCCGAG  
GTAAAGTCATCTACCCATGAATCCCGCAAACACAAGAAGTCAAAGAAATCCACAAAAAAGCAGAAAA  
AAAGGTACACAAAAACAGAAGAAAAGCAAAGGAAGCCACAGATATAACAGCAGATTCTCGAGTGA  
GTTCTCAGAAGAACTGGGGCTTCTGGTACAAGGAAAGGAAACAACCACATAAACGCAAGAAAAATCC  
AGGAAAAAGTCTCTCAAAAAACCTGCTTTATTCTTAGAGGCAGAAAGTAACTTACATTACAGATGATT  
CAGCATCCAGCAGTTCTGAGGAAAGTGAGGAAAGAGACTAAGAAAACCAAAGGAAAAAGAGAGAGAA  
AAAAGCCCATACCTCTGTAGCCAACAATGAAATACAGGAGAGGACAAACAAACGCACAAATTGAAAAGTA  
GCTACAGATGAAAGGTCGCTGAGAGCTCAGAGGATGAC

**ACGCGT**ACGCGGCCGCTCGAGCAGAAACTCATCTCAGAAGAGGATCTGGCAGCAAATGATATCCTGGATT  
ACAAGGATGACGACGATAAGGTTTAA



[View online »](#)

**Protein Sequence:** >RC213479 protein sequence  
Red=Cloning site Green=Tags(s)

MSRIPLGKVLRLNVIRHTDAHNKIQEESDMWEIRELEKQMEDAYRGTKRKMPLSSSSRMRSDFDEESQR  
 YYWRPKNEISGLEDDFLKAKSWNKKFYDYEANMPDRWGHSGYKELYPEEFETDSSDQDITNGKKTSPQ  
 VKSSTHESRKHKKSKKSHKKKQKKRSHKKQKSKKEATDITADSSSEFSEETGASGTRKGKQPHKRRKKKS  
 RKKSLKKPALFLEAESNTSHSDDSSASSSSESEERDTKTKRKKREKKAHTSVANNEIQERTNKR TNWKV  
 ATDERSAESED

TRTRPLEQKLISEEDLAANDILDYKDDDDKV

**Chromatograms:** [https://cdn.origene.com/chromatograms/mk6364\\_f10.zip](https://cdn.origene.com/chromatograms/mk6364_f10.zip)

**Restriction Sites:** SgfI-MluI

**Cloning Scheme:**



**ACCN:** NM\_018195

**ORF Size:** 879 bp

**OTI Disclaimer:** The molecular sequence of this clone aligns with the gene accession number as a point of reference only. However, individual transcript sequences of the same gene can differ through naturally occurring variations (e.g. polymorphisms), each with its own valid existence. This clone is substantially in agreement with the reference, but a complete review of all prevailing variants is recommended prior to use. [More info](#)

**OTI Annotation:** This clone was engineered to express the complete ORF with an expression tag. Expression varies depending on the nature of the gene.

**Components:** The ORF clone is ion-exchange column purified and shipped in a 2D barcoded Matrix tube containing 10ug of transfection-ready, dried plasmid DNA (reconstitute with 100 ul of water).

- Reconstitution Method:**
1. Centrifuge at 5,000xg for 5min.
  2. Carefully open the tube and add 100ul of sterile water to dissolve the DNA.
  3. Close the tube and incubate for 10 minutes at room temperature.
  4. Briefly vortex the tube and then do a quick spin (less than 5000xg) to concentrate the liquid at the bottom.
  5. Store the suspended plasmid at -20°C. The DNA is stable for at least one year from date of shipping when stored at -20°C.

**RefSeq:** [NM\\_018195.2](#), [NP\\_060665.2](#)

**RefSeq Size:** 3757 bp

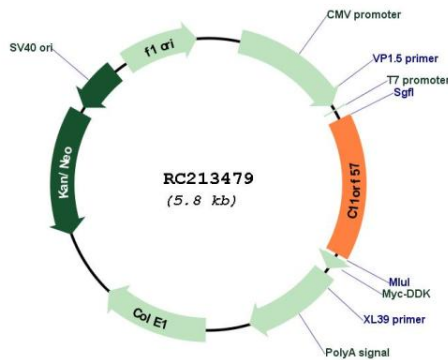
**RefSeq ORF:** 882 bp

**Locus ID:** 55216

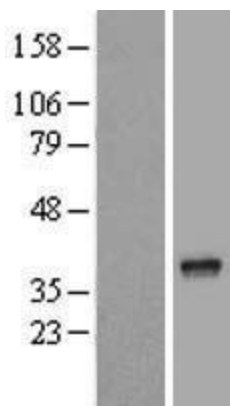
**Cytogenetics:** 11q23.1

**MW:** 34.2 kDa

**Product images:**



Circular map for RC213479



Western blot validation of overexpression lysate (Cat# [LY421200]) using anti-DDK antibody (Cat# [TA50011-100]). Left: Cell lysates from untransfected HEK293T cells; Right: Cell lysates from HEK293T cells transfected with [RC218973] using transfection reagent MegaTran 2.0 (Cat# [TT210002]).