

## Product datasheet for **RC213478**

### **P2Y12 (P2RY12) (NM\_176876) Human Tagged ORF Clone**

#### Product data:

Product Type:	Expression Plasmids
Product Name:	P2Y12 (P2RY12) (NM_176876) Human Tagged ORF Clone
Tag:	Myc-DDK
Symbol:	P2Y12
Synonyms:	ADPG-R; BDPLT8; HORK3; P2T(AC); P2Y(12)R; P2Y(AC); P2Y(ADP); P2Y(cyc); P2Y12; SP1999
Mammalian Cell Selection:	Neomycin
Vector:	pCMV6-Entry (PS100001)
E. coli Selection:	Kanamycin (25 ug/mL)
ORF Nucleotide Sequence:	>RC213478 representing NM_176876 Red=Cloning site Blue=ORF Green=Tags(s)

TTTTGTAATACGACTCACTATAGGGCGGCCGGAATTCGTCGACTGGATCCGGTACCGAGGAGATCTGCC  
GCC**CGATCGCC**

ATGCAAGCCGTCGACAACCTCACCTCTGCGCCTGGTAACACCAGTCTGTGCACCAGAGACTACAAAATCA  
CCCAGGTCCTCTCCACTGCTACACTGTCCTGTTTTTTGTTGGACTATCACAAATGGCCTGGCGAT  
GAGGATTTTCTTCAAATCCGGAGTAAATCAAACCTTTATATTTTTCTTAAGAACACAGTCAATTTCTGAT  
CTTCTCATGATTCTGACTTTTCCATTCAAATTTCTTAGTGATGCCAAACTGGGAACAGGACCACTGAGAA  
CTTTTGTGTGCAAGTTACCTCCGTCATATTTATTTTCAATGTATATCAGTATTTTCTTCTGGGACT  
GATAACTATCGATCGCTACCAGAAGACCACCAGGCCATTTAAAACATCCAACCCAAAAATCTCTTGGGG  
GCTAAGATTCTCTCTGTTGTCATCTGGGCATTCATGTTCTTACTCTCTTTGCCTAACATGATTCTGACCA  
ACAGGCAGCCGAGAGACAAGAATGTGAAGAAATGCTCTTTCTTAAATCAGAGTTCGGTCTAGTCTGGCA  
TGAAATAGTAAATTACATCTGTCAAGTCATTTTCTGGATTAATTTCTTAATTGTTATTGTATGTTATACA  
CTATTACAAAAGAACTGTACCGGTCATACGTAAGAACGAGGGGTGTAGGTAAAGTCCCCAGGAAAAAGG  
TGAACGTCAAAGTTTTTATTATCATTGCTGTATTTCTTTATTTGTTTTGTTCTTTCCATTTTGCCCGAAT  
TCCTTACACCTGAGCCAAACCCGGGATGTCTTTGACTGCACTGCTGAAAATACTCTGTTCTATGTGAAA  
GAGAGCACTCTGGTTAACTTCTTAAATGCATGCCTGGATCCGTTTCATCTATTTTTTCTTTGCAAGT  
CCTTCAGAAATTCCTTGATAAGTATGCTGAAGTGCCCAATTCTGCAACATCTCTGTCCCAGGACAATAG  
GAAAAAGAACAGGATGGTGGTGACCCAAATGAAGAGACTCCAATG

**ACGCGT**ACGCGGCCGCTCGAGCAGAAACTCATCTCAGAAGAGGATCTGGCAGCAATGATATCCTGGATT  
ACAAGGATGACGACGATAAGGTTTAA



[View online »](#)

**Protein Sequence:** >RC213478 representing NM\_176876  
Red=Cloning site Green=Tags(s)

MQAVDNLTSAPGNTSLCTRDKITQVLFPLLYTVLFFVGLITNGLAMRIFFQIRSKSNFIIFLKNTVISD  
 LLMILTFPFKILSDAKLGTGPLRTFVCQVTSVIFYFTMYISISFLGLITIDRYQKTRPFKTSNPKNLLG  
 AKILSVVIWAFMFLLSLPNMILNTRQPRDKNVKCSFLKSEFGLVWHEIVNYICQVIFWINFLIVICYT  
 LITKELYRSYVRTRGVGKVPKRVNVKVFIIIIVFFICFVPHFARIPYTLSTQTRDVFDCDAENTLIFYVK  
 ESTLWLTSLNACLDPFIYFFLCKSFRNSLISMLKCPNSATLSLQDNRRKKEQDGGDPNEETPM

TRTRPLEQKLISEEDLAANDILDYKDDDDKV

**Chromatograms:** [https://cdn.origene.com/chromatograms/mk6067\\_h09.zip](https://cdn.origene.com/chromatograms/mk6067_h09.zip)

**Restriction Sites:** SgfI-MluI

**Cloning Scheme:**



**ACCN:** NM\_176876

**ORF Size:** 1026 bp

**OTI Disclaimer:** The molecular sequence of this clone aligns with the gene accession number as a point of reference only. However, individual transcript sequences of the same gene can differ through naturally occurring variations (e.g. polymorphisms), each with its own valid existence. This clone is substantially in agreement with the reference, but a complete review of all prevailing variants is recommended prior to use. [More info](#)

**OTI Annotation:** This clone was engineered to express the complete ORF with an expression tag. Expression varies depending on the nature of the gene.

**Components:** The ORF clone is ion-exchange column purified and shipped in a 2D barcoded Matrix tube containing 10ug of transfection-ready, dried plasmid DNA (reconstitute with 100 ul of water).

**Reconstitution Method:**

1. Centrifuge at 5,000xg for 5min.
2. Carefully open the tube and add 100ul of sterile water to dissolve the DNA.
3. Close the tube and incubate for 10 minutes at room temperature.
4. Briefly vortex the tube and then do a quick spin (less than 5000xg) to concentrate the liquid at the bottom.
5. Store the suspended plasmid at -20°C. The DNA is stable for at least one year from date of shipping when stored at -20°C.

**RefSeq:** [NM\\_176876.3](#)

**RefSeq Size:** 1474 bp

**RefSeq ORF:** 1029 bp

**Locus ID:** 64805

**UniProt ID:** [Q9H244](#)

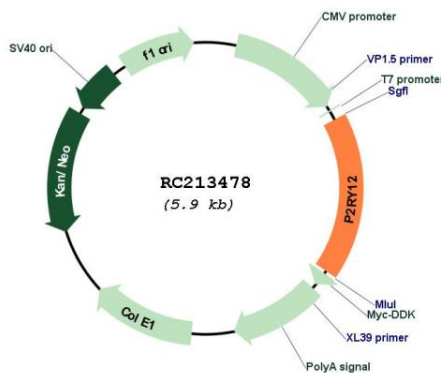
**Cytogenetics:** 3q25.1

**Protein Families:** Druggable Genome, GPCR, Transmembrane

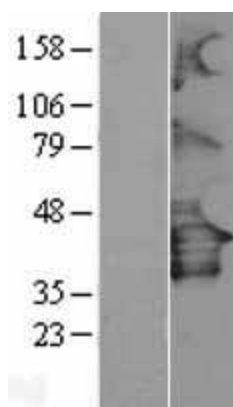
**MW:** 39.3 kDa

**Gene Summary:** The product of this gene belongs to the family of G-protein coupled receptors. This family has several receptor subtypes with different pharmacological selectivity, which overlaps in some cases, for various adenosine and uridine nucleotides. This receptor is involved in platelet aggregation, and is a potential target for the treatment of thromboembolisms and other clotting disorders. Mutations in this gene are implicated in bleeding disorder, platelet type 8 (BDPLT8). Alternative splicing results in multiple transcript variants of this gene. [provided by RefSeq, Jul 2013]

## Product images:



Circular map for RC213478



Western blot validation of overexpression lysate (Cat# [LY403587]) using anti-DDK antibody (Cat# [TA50011-100]). Left: Cell lysates from untransfected HEK293T cells; Right: Cell lysates from HEK293T cells transfected with RC213478 using transfection reagent MegaTran 2.0 (Cat# [TT210002]).