

Product datasheet for RC213471

GALR1 (NM_001480) Human Tagged ORF Clone

Product data:

Product Type:	Expression Plasmids
Product Name:	GALR1 (NM_001480) Human Tagged ORF Clone
Tag:	Myc-DDK
Symbol:	GALR1
Synonyms:	GALNR; GALNR1
Mammalian Cell Selection:	Neomycin
Vector:	pCMV6-Entry (PS100001)
E. coli Selection:	Kanamycin (25 ug/mL)
ORF Nucleotide Sequence:	>RC213471 ORF sequence Red=Cloning site Blue=ORF Green=Tags(s)

TTTTGTAATACGACTCACTATAGGGCGGCCGGAATTCGTCGACTGGATCCGGTACCGAGGAGATCTGCC
GCC**CGATCGCC**

ATGGAGCTGGCGGTGGGAACCTCAGCGAGGGCAACGCGAGCTGGCCGGAGCCCCCGCCCGGAGCCCG
GGCCGCTGTTCCGCATCGGCGTGGAGAACTTCGTACGCTGGTGGTTCGGCCTGATCTTCGCGCTGGG
CGTGTGGGCAACAGCCTAGTGATCACCGTGTGGCGCGCAGCAAGCCGGCAAGCCGGGAGCACCACC
AACCTGTTATCCTCAACCTGAGCATCGCCGACCTGGCCTACCTGCTCTTCTGCATCCCCTCCAGGCCA
CCGTGTACGCGCTGCCACCTGGGTGCTGGGCGCCTTCATCTGCAAGTTCATCCACTACTTCTTCACCGT
GTCCATGCTGGTGGTGGTACCTCACCTGGCCGCGATGTCCGTGGACCGCTACGTGGCCATCGTGCCTCG
CGGCGCTCCTCCTCCCTCAGGGTGTCCCGCAACGCGCTGCTGGGCGTGGGCTGCATCTGGGCGCTGTCCA
TTGCCATGGCCTCGCCCGTGGCCTACCACCAGGGCCTTCCACCCGCGCGCCAGCAACCAGACCTTCTG
CTGGGAGCAGTGGCCGACCCCTCGCCACAAGAAGGCTACGTGGTGTGCACCTTCGTCTTCGGCTACCTG
CTGCCGCTCCTGCTCATCTGCTTCTGCTATGCCAAGTCTTAATCACTTGATAAAAAAGTTGAAGAACA
TGTCAAAAGAAGTCTGAAGCATCCAAGAAAAAGACTGCACAGACAGTCTGGTGGTGGTGTGGTGTGGT
AATCTCCTGGCTGCCGACCATCATCCATCTCTGGGCTGAGTTGGAGTTTCCCGCTGACCCGGCT
TCCTTCTCTTCAAGATCACCGCCACTGCCTGGCGTACAGCAATTCCTCCGTGAATCCTATCATTATG
CATTTCTCTGAAAATTCAGGAAGGCCATAAACAAGTGTCAAGTGTACATTTCGAAAAGATTACACA
CCTGAGTGATACTAAAGAAAATAAAAGTGAATAGACACCCACCATCAACCAATTGTACTCATGTG

ACGCGTACGCGGCCGCTCGAGCAGAACTCATCTCAGAAGAGGATCTGGCAGCAATGATATCCTGGATT
ACAAGGATGACGACGATAAGGTTTAA



[View online »](#)

Protein Sequence: >RC213471 protein sequence
Red=Cloning site Green=Tags(s)

MELAVGNLSEGNASWPEPPAPEPGPLFGIGVENFVTLVVFGLIFALGVLGNSLVITVLARSKPGKPRSTT
 NLFILNLSIADLAYLLFCIPFQATVYALPTWVLGAFICKFIHYFFTVSMLVSIIFTLAAMSVDYVAIVHS
 RRSSSLRVSRNALLGVGCIWALSAMASPVAYHQGLFHPRASNQTFCWEQWDPDRHKKAYVVCTFVFGYL
 LPLLLICFCYAKVLNHLHKKLNMSKKSEASKKTAQTVLVVVVVFGISWLPHHIHLWAEFGVFLTPA
 SFLFRITAHCLAYSNSSVNPIIYAFLSEFRKAYKQVFKCHIRKDSHLSDTKENKSRIDTPPSTNCTHV

TRTRPLEQKLISEEDLAANDILDYKDDDDKV

Chromatograms: https://cdn.origene.com/chromatograms/mk6456_d12.zip

Restriction Sites: SgfI-MluI

Cloning Scheme:

Cloning sites used for ORF Shuttling:



* The last codon before the Stop codon of the ORF

ACCN: NM_001480

ORF Size: 1047 bp

OTI Disclaimer: The molecular sequence of this clone aligns with the gene accession number as a point of reference only. However, individual transcript sequences of the same gene can differ through naturally occurring variations (e.g. polymorphisms), each with its own valid existence. This clone is substantially in agreement with the reference, but a complete review of all prevailing variants is recommended prior to use. [More info](#)

OTI Annotation: This clone was engineered to express the complete ORF with an expression tag. Expression varies depending on the nature of the gene.

Components: The ORF clone is ion-exchange column purified and shipped in a 2D barcoded Matrix tube containing 10ug of transfection-ready, dried plasmid DNA (reconstitute with 100 ul of water).

Reconstitution Method:

1. Centrifuge at 5,000xg for 5min.
2. Carefully open the tube and add 100ul of sterile water to dissolve the DNA.
3. Close the tube and incubate for 10 minutes at room temperature.
4. Briefly vortex the tube and then do a quick spin (less than 5000xg) to concentrate the liquid at the bottom.
5. Store the suspended plasmid at -20°C. The DNA is stable for at least one year from date of shipping when stored at -20°C.

RefSeq: [NM_001480.2](#), [NP_001471.1](#)

RefSeq Size: 2787 bp

RefSeq ORF: 1050 bp

Locus ID: 2587

UniProt ID: [P47211](#)

Cytogenetics: 18q23

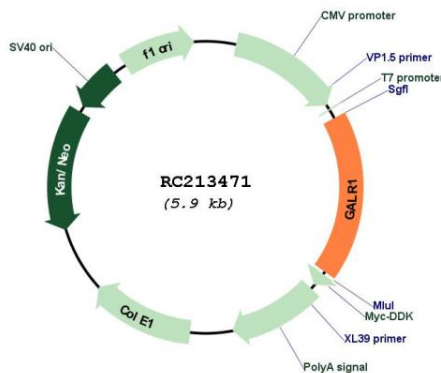
Protein Families: Druggable Genome, Transmembrane

Protein Pathways: Neuroactive ligand-receptor interaction

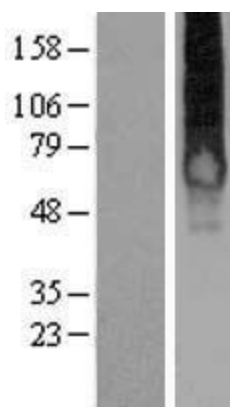
MW: 39 kDa

Gene Summary: The neuropeptide galanin elicits a range of biological effects by interaction with specific G-protein-coupled receptors. Galanin receptors are seven-transmembrane proteins shown to activate a variety of intracellular second-messenger pathways. GALR1 inhibits adenylyl cyclase via a G protein of the Gi/Go family. GALR1 is widely expressed in the brain and spinal cord, as well as in peripheral sites such as the small intestine and heart. [provided by RefSeq, Jul 2008]

Product images:



Circular map for RC213471



Western blot validation of overexpression lysate (Cat# [LY419921]) using anti-DDK antibody (Cat# [TA50011-100]). Left: Cell lysates from untransfected HEK293T cells; Right: Cell lysates from HEK293T cells transfected with RC213471 using transfection reagent MegaTran 2.0 (Cat# [TT210002]).