

Product datasheet for **RC213462**

ADGRE1 (NM_001974) Human Tagged ORF Clone

Product data:

Product Type:	Expression Plasmids
Product Name:	ADGRE1 (NM_001974) Human Tagged ORF Clone
Tag:	Myc-DDK
Symbol:	ADGRE1
Synonyms:	EMR1; TM7LN3
Mammalian Cell Selection:	Neomycin
Vector:	pCMV6-Entry (PS100001)
E. coli Selection:	Kanamycin (25 ug/mL)



[View online »](#)

ORF Nucleotide Sequence:

>RC213462 representing NM_001974
 Red=Cloning site Blue=ORF Green=Tags(s)

TTTTGTAATACGACTCACTATAGGGCGGCCGGAATTCGTGACTGGATCCGGTACCGAGGAGATCTGCC
 GCC**CGGATCGCC**

ATGCGTGGCTTCAACCTGCTCCTTCTGCGGATGTTGTATTGCACAGCTGGGAAGGGCACATAAGAC
 CCACACGAAACCAACACAAAGGGTAATAACTGTAGAGACAGTACCTTGTGCCAGCTTATGCCACCTG
 CACCAATACAGTGGACAGTTACTATTGCGCTTGCAAAACAAGGCTTCTGTCCAGCAATGGGCAAAATCAC
 TTCAAGGATCCAGGAGTGCAGTGCAAAGATATTGATGAATGTTCTCAAAGCCCCAGCCCTGTGGTCCTA
 ACTCATCTGCAAAAACCTGTCAGGGAGGTACAAGTGCAGCTGTTTAGATGGTTTCTTCTCCACTGG
 AAATGACTGGGTCCAGGAAAGCCGGGCAATTTCTCTGTACTGATATCAATGAGTGCCTCACCAGCAGC
 GTCTGCCCTGAGCATTCTGACTGTGCACTCCATGGGAAGCTACAGTTGCAGCTGTCAAGTTGGATTCA
 TCTCTAGAACTCCACCTGTGAAGACGTGGATGAATGTGCAGATCCAAGAGCTTGCCAGAGCATGCAAC
 TTGTAATAACACTGTTGGAACTACTCTTGTCTTCTGCAACCCAGGATTTGAATCCAGCAGTGGCCACTTG
 AGTTTCCAGGGTCTCAAAGCATCGTGTGAAGATATTGATGAATGCACTGAAATGTGCCCATCAATTCAA
 CATGCACCAACACTCCTGGGAGCTACTTTTGCACCTGCCACCCTGGCTTTCACCAAGCAATGGACAGTT
 GAATTTACAGACCAAGGAGTGGAAATGTAGAGATATTGATGAGTCCGCCAAGATCCATCAACCTGTGGT
 CCTAATTTCTATCTGCACCAATGCCCTGGGCTCCTACAGCTGTGGCTGCATTGCAGGCTTTCATCCCAATC
 CAGAAGGCTCCCAGAAAGATGGCAACTTCAGCTGCCAAAGGGTCTCTTCAAATGTAAGGAAGATGTGAT
 ACCCGATAATAAGCAGATCCAGCAATGCCAAGAGGGAAACCGCAGTGAAACCTGCATATGTCTCCTTTGT
 GCACAAATAAATAACATCTTCAGCGTTCTGGACAAAGTGTGTGAAAATAAACGACCGTAGTTTCTCTGA
 AGAATACAACAGTGGAGCTTTGTCCCTGTGCTTAAACAAATATCCACGTGGACTAAATCCACCAAGGA
 GACGTCCTCCCTGGCCACAGTCTTCTGAGAGTGTGGAAAGCATGACACTGGCATCTTTTTGGAACCC
 TCAGCAAATATCACTCCGGCTGTTCCGACGGAATACTTAGACATTGAGAGCAAAGTTATCAACAAAGAAT
 GCAGTGAAGAGAATGTGACGTTGGACTTGGTAGCCAAGGGGGATAAGATGAAGATCGGGTGTCCACAAT
 TGAGGAATCTGAATCCACAGAGACCACTGGTGTGGCTTTTGTCTCCTTTGTGGGCATGGAATCGGTTTTA
 AATGAGCGCTTCTCAAAGACCACCAGGCTCCCTTGACCACCTCTGAGATCAAGTGAAGATGAATTCTC
 GAGTCGTTGGGGGCATAATGACTGGAGAGAAGAAAGACGGCTTCTCAGATCCAATCATCTACACTCTGGA
 GAACATTCAGCCAAAGCAGAAGTTTGGAGGCCCATCTGTGTTTCTGGAGCACTGATGTGAAGGGTGA
 AGATGGACATCCTTTGGCTGTGTATCCTGGAAGCTTCTGAGACATATACCATCTGCAGCTGAATCAGA
 TGGCAAATCTTGCCGTTATCATGGCGTCTGGGGAGCTCACGATGGACTTTTCTTGTACATCATTAGCCA
 TGTAGGCATTATCATCTCCTTGGTGTGCCTCGTCTTGGCCATCGCCACCTTTCTGCTGTGTGCTCCATC
 CGAAATCACAACACCTACCTCCACCTGCACCTCTGCGTGTGTCTCCTTGGCGAAGACTCTTCTCCTCG
 CCGGTATACAAAGACTGACAACAAGATGGGCTGCGCCATCATCGCGGGCTTCTGCACTACCTTTTCTC
 TGCTGCTTCTTCTGGATGTGTTGGAGGCTGTGATACTGTTCTTGTATGGTCAGAAACCTGAAGTGGTG
 AATTACTTCAGCTCTCGCAACATCAAGATGTGACATCTGTGCCTTTGGTTATGGGCTGCCGATGCTGG
 TGGTGGTATCTCTGCCAGTGTGCAGCCACAGGGCTATGGAATGCATAATCGCTGCTGGCTGAATACAGA
 GACAGGGTTCATCTGGAGTTTCTTGGGGCCAGTTGCACAGTTATAGTGATCAACTCCCTTCTCCTGACC
 TGGACCTTGTGGATCCTGAGGCAGAGGCTTCCAGTGTTAATGCCGAAGTCTCAACGCTAAAAGACACCA
 GTTACTGACCTTCAAGGCCTTTGCCAGCTTTCATCCTGGGCTGCTCCTGGGTGCTGGGCATTTTTCA
 GATTGGACCTGTGGCAGGTGTATGGCTTACCTGTTACCATCATCAACAGCCTGCAGGGGGCTTCATC
 TTCCTCATCCACTGTCTGCTCAACGGCCAGGTACGAGAAGAATAACAAGAGGTGGATCACTGGGAAGACGA
 AGCCAGCTCCCAGTCCCAGACCTCAAGGATCTTGTCTCCTCCATGCCATCCGCTTCCAAGACGGGT

ACGCGTACGCGGCCGCTCGAGCAGAACTCATCTCAGAAGAGGATCTGGCAGCAATGATATCTGGATT
 ACAAGGATGACGACGATAAGGTTTAA

Protein Sequence: >RC213462 representing NM_001974
 Red=Cloning site Green=Tags(s)

MRGFNLLLFWGCCVMHSEWEGHIRPTRKPNKGNCRDSTLCPAYATCTNTVDSYACACKQGFSSNGQNH
 FKDPGVRCKDIDECSPQPCGPNSSCKNL SGRYKCSCLDGFSSPTGNDWVPGKPGNF SCTDINECLTSS
 VCPHEHSDCVNSMGSYSCSQVGFISRNSTCEDVDECADPRACPEHATCNNTVGNYSFCNPGFESSGHL
 SFQGLKASCEDIDECTEMCPINSTCTNTPGSYFCTCHPGFAPSNGQLNFTDQGVVECRDIDECRQDPSTCG
 PNSICTNALGSYSCGCIAGFHPNPEGSQKDNFSCQRVLFKCKEDVIPDNKQIQQCQEGTAVKPAYVSFC
 AQINNIFSVLTKVCENKTTVVSLKNTTESFVPLKQISTWTKFTKEETSSLATVFLSVESMTLASFVKP
 SANITPAVRTEYLDIESKVINKECSEENVTLDLVAKGDKMKIGCSTIEESESTETTGVAFVSFVGMESVL
 NERFFKDHQAPLTTSEIKLMNSRVVGGIMTGEKKDGFSDPIIYTLNIQPKQKFERPICVSWSTDVKGG
 RWTSFGCVILEASETYTICSCNQMANLAVIMASGELTMDFLYIISHVGIISLVCLVLAIAATFLLCRSI
 RNHNTYLHLHLVCLLLAKTLFLAGIHKTDNKMGCIIAGFLHYLFLACFFWMLVEAVILFMMVRNLKVV
 NYFSSRNKMLHICAFGYLPLVVVISASVQPQGYGMHNRCWLNTEGFIWSFLGPVCTVIVINLLLLT
 WTLWILRQRLSSVNAEVSTLKDTRLLTFKAFQFLGCSWVLGIFQIGPVAGVMAYLFTIINSLQGAFI
 FLIHCLLNGQVREEYKRWITGKTKPSSQSQT SRILLSSMPSASKTG

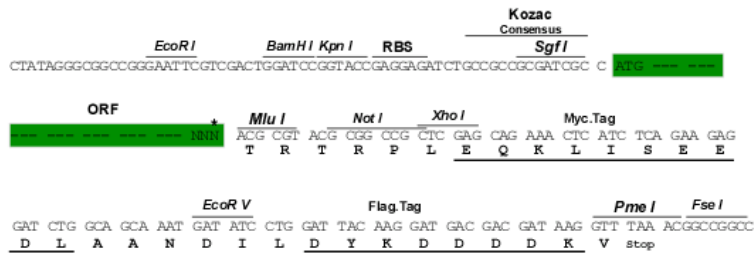
TRTRPLEQKLISEEDLAANDILDYKDDDDKV

Chromatograms: https://cdn.origene.com/chromatograms/mk8007_g02.zip

Restriction Sites: SgfI-MluI

Cloning Scheme:

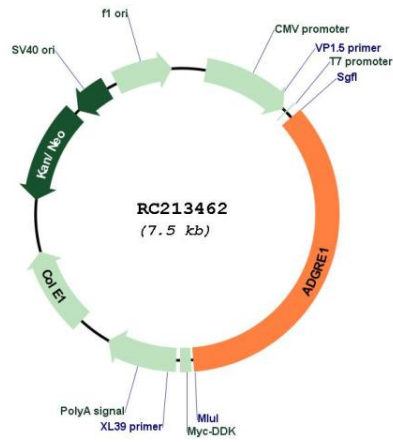
Cloning sites used for ORF Shuttling:



* The last codon before the Stop codon of the ORF

ACCN:	NM_001974
ORF Size:	2658 bp
OTI Disclaimer:	The molecular sequence of this clone aligns with the gene accession number as a point of reference only. However, individual transcript sequences of the same gene can differ through naturally occurring variations (e.g. polymorphisms), each with its own valid existence. This clone is substantially in agreement with the reference, but a complete review of all prevailing variants is recommended prior to use. More info
OTI Annotation:	This clone was engineered to express the complete ORF with an expression tag. Expression varies depending on the nature of the gene.
Components:	The ORF clone is ion-exchange column purified and shipped in a 2D barcoded Matrix tube containing 10ug of transfection-ready, dried plasmid DNA (reconstitute with 100 ul of water).
Reconstitution Method:	<ol style="list-style-type: none">1. Centrifuge at 5,000xg for 5min.2. Carefully open the tube and add 100ul of sterile water to dissolve the DNA.3. Close the tube and incubate for 10 minutes at room temperature.4. Briefly vortex the tube and then do a quick spin (less than 5000xg) to concentrate the liquid at the bottom.5. Store the suspended plasmid at -20°C. The DNA is stable for at least one year from date of shipping when stored at -20°C.
RefSeq:	NM_001974.5
RefSeq Size:	3150 bp
RefSeq ORF:	2661 bp
Locus ID:	2015
UniProt ID:	Q14246
Cytogenetics:	19p13.3-p13.2
Protein Families:	Druggable Genome, Transmembrane
MW:	97.5 kDa
Gene Summary:	This gene encodes a protein that has a domain resembling seven transmembrane G protein-coupled hormone receptors (7TM receptors) at its C-terminus. The N-terminus of the encoded protein has six EGF-like modules, separated from the transmembrane segments by a serine/threonine-rich domain, a feature reminiscent of mucin-like, single-span, integral membrane glycoproteins with adhesive properties. Multiple alternatively spliced transcript variants encoding different isoforms have been found for this gene. [provided by RefSeq, Jan 2012]

Product images:



Circular map for RC213462