

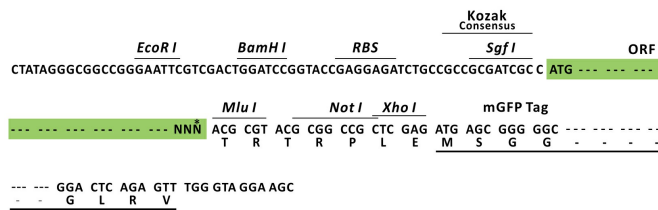
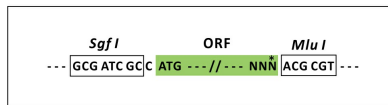
## Product datasheet for RC213460L4

### CD32 (FCGR2C) (NM\_001005411) Human Tagged Lenti ORF Clone

#### Product data:

Product Type:	Expression Plasmids
Product Name:	CD32 (FCGR2C) (NM_001005411) Human Tagged Lenti ORF Clone
Tag:	mGFP
Symbol:	CD32
Synonyms:	CD32; CD32C; Fc fragment of IgG, low affinity IIc, receptor for; Fc fragment of IgG, low affinity IIc, receptor for (CD32); FcgammaRIIC; FCGR2B; FcRIIC; hFcRII-C
Mammalian Cell Selection:	Puromycin
Vector:	pLenti-C-mGFP-P2A-Puro (PS100093)
E. coli Selection:	Chloramphenicol (34 ug/mL)
ORF Nucleotide Sequence:	The ORF insert of this clone is exactly the same as(RC213460).
Restriction Sites:	SgfI-MluI
Cloning Scheme:	

Cloning sites used for ORF Shuttling:



\* The last codon before the Stop codon of the ORF.

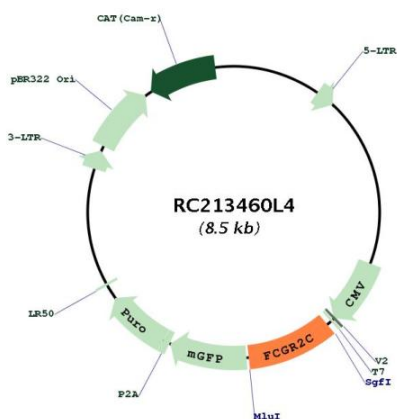
ACCN:	NM_001005411
ORF Size:	801 bp



[View online >](#)

<b>OTI Disclaimer:</b>	The molecular sequence of this clone aligns with the gene accession number as a point of reference only. However, individual transcript sequences of the same gene can differ through naturally occurring variations (e.g. polymorphisms), each with its own valid existence. This clone is substantially in agreement with the reference, but a complete review of all prevailing variants is recommended prior to use. <a href="#">More info</a>
<b>OTI Annotation:</b>	This clone was engineered to express the complete ORF with an expression tag. Expression varies depending on the nature of the gene.
<b>Components:</b>	The ORF clone is ion-exchange column purified and shipped in a 2D barcoded Matrix tube containing 10ug of transfection-ready, dried plasmid DNA (reconstitute with 100 ul of water).
<b>Reconstitution Method:</b>	<ol style="list-style-type: none"><li>1. Centrifuge at 5,000xg for 5min.</li><li>2. Carefully open the tube and add 100ul of sterile water to dissolve the DNA.</li><li>3. Close the tube and incubate for 10 minutes at room temperature.</li><li>4. Briefly vortex the tube and then do a quick spin (less than 5000xg) to concentrate the liquid at the bottom.</li><li>5. Store the suspended plasmid at -20°C. The DNA is stable for at least one year from date of shipping when stored at -20°C.</li></ol>
<b>RefSeq:</b>	<a href="#">NM_001005411.1</a>
<b>RefSeq Size:</b>	967 bp
<b>RefSeq ORF:</b>	803 bp
<b>Locus ID:</b>	9103
<b>Cytogenetics:</b>	1q23.3
<b>Protein Families:</b>	ES Cell Differentiation/IPS, Transmembrane
<b>Protein Pathways:</b>	Fc gamma R-mediated phagocytosis, Systemic lupus erythematosus
<b>MW:</b>	29.2 kDa
<b>Gene Summary:</b>	This gene encodes one of three members of a family of low-affinity immunoglobulin gamma Fc receptors found on the surface of many immune response cells. The encoded protein is a transmembrane glycoprotein and may be involved in phagocytosis and clearing of immune complexes. An allelic polymorphism in this gene results in both coding and non-coding variants. [provided by RefSeq, Apr 2012]

Product images:



Circular map for RC213460L4