

Product datasheet for **RC213460**

CD32 (FCGR2C) (NM_001005411) Human Tagged ORF Clone

Product data:

Product Type:	Expression Plasmids
Product Name:	CD32 (FCGR2C) (NM_001005411) Human Tagged ORF Clone
Tag:	Myc-DDK
Symbol:	CD32
Synonyms:	CD32; CD32C; Fc fragment of IgG, low affinity IIc, receptor for; Fc fragment of IgG, low affinity IIc, receptor for (CD32); FcgammaRIIC; FCGR2B; FcRIIC; hFcRII-C
Mammalian Cell Selection:	Neomycin
Vector:	pCMV6-Entry (PS100001)
E. coli Selection:	Kanamycin (25 ug/mL)
ORF Nucleotide Sequence:	>RC213460 representing NM_001005411 Red=Cloning site Blue=ORF Green=Tags(s)

TTTTGTAATACGACTCACTATAGGGCGGCCGGAATTCGTCGACTGGATCCGGTACCGAGGAGATCTGCC
GCC**CGATCGCC**

ATGGGAATCCTGTCATTCTTACCTGTCCTTGCCACTGAGAGTGACTGGGCTGACTGCAAGTCCCCCAGC
CTTGGGGTCATATGCTTCTGTGGACAGCTGTGCTATTCCTGGCTCCTGTTGCTGGGACACCTGCAGCTCC
CCCAAAGGCTGTGCTGAACTCGAGCCCCAGTGGATCAACGTGCTCCAAGAGGACTCTGTGACTCTGACA
TGCCGGGGGACTCACAGCCCTGAGAGCGACTCCATTCCGTGGTCCACAATGGGAATCTCATTCCCACCC
ACACGCAGCCCAGCTACAGGTTCAAGGCCAACAAATGACAGCGGGGAGTACACGTGCCAGACTGGCCA
GACCAGCCTCAGCGACCCTGTGCATCTGACTGTGCTTTCTGAGTGGCTGGTGTCCAGACCCTCACCTG
GAGTTCAGGAGGAGAAACCATCGTGTGAGGTGCCACAGCTGGAAGGACAAGCCTCTGGTCAAGTCA
CATTCTTCCAGAATGGAAAATCCAAGAAATTTTCCCGTTCGGATCCCAACTTCTCCATCCCAAGCAAA
CCACAGTCACAGTGGTGATTACCACTGCACAGGAAACATAGGCTACACGCTGTACTCATCAAGCCTGTG
ACCATCACTGTCCAAGCTCCCAGCTCTTACCAGTGGGGATCATTGTGGCTGTGGTCACTGGGATTGCTG
TAGCGGCCATTGTTGCTGCTGTAGTGGCCTTGATCTACTGCAGGAAAAAGCGGATTTTCAGCCACCTGGAC
GTCAAATGATTGCCATCAGAAAGAGACAACC

ACGCGTACGCGGGCCGCTCGAGCAGAACTCATCTCAGAAGAGGATCTGGCAGCAATGATATCCTGGATT
ACAAGGATGACGACGATAAGGTTTAA



[View online »](#)

Protein Sequence: >RC213460 representing NM_001005411
Red=Cloning site Green=Tags(s)

MGILSFLPVLATESDWADCKSPQPWGHMLLWTAVLFLAPVAGTPAAPPKAVLKLEPQWINVLQEDSVTLT
 CRGTHSPESDSIPWFHNGNLIPHTHTQPSYRFKANNDSGEYTCQTGTSLSDPVHLTVLSEWLVLQTPHL
 EFQEGETIVLRCHSWKDKPLVKVTFVFQNGKSKKFSRSDPNFSIPQANHSHSGDYHCTGNIGYTLYSSKPV
 TITVQAPSSSPMGIIVAVVTGIIVAAIVAAVVALIYCRKKRISATWTSNDCHQKETT

TRTRPLEQKLISEEDLAANDILDYKDDDDKV

Chromatograms: https://cdn.origene.com/chromatograms/mk8048_b02.zip

Restriction Sites: SgfI-MluI

Cloning Scheme:



ACCN: NM_001005411

ORF Size: 801 bp

OTI Disclaimer: The molecular sequence of this clone aligns with the gene accession number as a point of reference only. However, individual transcript sequences of the same gene can differ through naturally occurring variations (e.g. polymorphisms), each with its own valid existence. This clone is substantially in agreement with the reference, but a complete review of all prevailing variants is recommended prior to use. [More info](#)

OTI Annotation: This clone was engineered to express the complete ORF with an expression tag. Expression varies depending on the nature of the gene.

Components: The ORF clone is ion-exchange column purified and shipped in a 2D barcoded Matrix tube containing 10ug of transfection-ready, dried plasmid DNA (reconstitute with 100 ul of water).

Reconstitution Method:

1. Centrifuge at 5,000xg for 5min.
2. Carefully open the tube and add 100ul of sterile water to dissolve the DNA.
3. Close the tube and incubate for 10 minutes at room temperature.
4. Briefly vortex the tube and then do a quick spin (less than 5000xg) to concentrate the liquid at the bottom.
5. Store the suspended plasmid at -20°C. The DNA is stable for at least one year from date of shipping when stored at -20°C.

RefSeq: [NM_001005411.2](#)

RefSeq Size: 967 bp

RefSeq ORF: 803 bp

Locus ID: 9103

Cytogenetics: 1q23.3

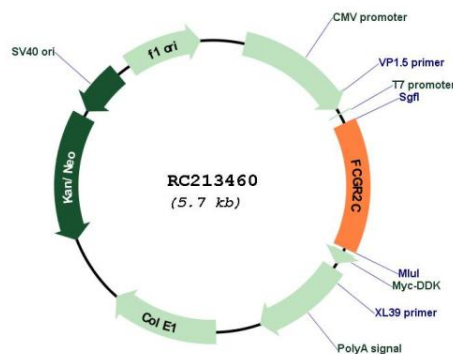
Protein Families: ES Cell Differentiation/IPS, Transmembrane

Protein Pathways: Fc gamma R-mediated phagocytosis, Systemic lupus erythematosus

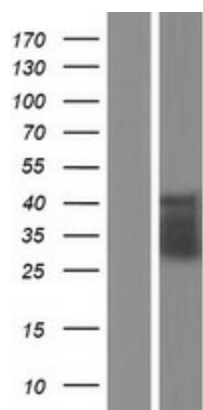
MW: 29.2 kDa

Gene Summary: This gene encodes one of three members of a family of low-affinity immunoglobulin gamma Fc receptors found on the surface of many immune response cells. The encoded protein is a transmembrane glycoprotein and may be involved in phagocytosis and clearing of immune complexes. An allelic polymorphism in this gene results in both coding and non-coding variants. [provided by RefSeq, Apr 2012]

Product images:



Circular map for RC213460



Western blot validation of overexpression lysate (Cat# [LY423718]) using anti-DDK antibody (Cat# [TA50011-100]). Left: Cell lysates from untransfected HEK293T cells; Right: Cell lysates from HEK293T cells transfected with RC213460 using transfection reagent MegaTran 2.0 (Cat# [TT210002]).