

## Product datasheet for **RC213454**

### **MID1 (NM\_001098624) Human Tagged ORF Clone**

#### **Product data:**

Product Type:	Expression Plasmids
Product Name:	MID1 (NM_001098624) Human Tagged ORF Clone
Tag:	Myc-DDK
Symbol:	MID1
Synonyms:	BBBG1; FXY; GBBB1; MIDIN; OGS1; OS; OSX; RNF59; TRIM18; XPRF; ZNFX1
Mammalian Cell Selection:	Neomycin
Vector:	pCMV6-Entry (PS100001)
E. coli Selection:	Kanamycin (25 ug/mL)



[View online »](#)

**ORF Nucleotide  
Sequence:**

>RC213454 representing NM\_001098624  
 Red=Cloning site Blue=ORF Green=Tags(s)

TTTTGTAATACGACTCACTATAGGGCGGCCGGGAATTCGTCGACTGGATCCGGTACCGAGGAGATCTGCC  
 GCC**CGATCGC**

ATGGAACACTGGAGTCAGAACTGACCTGCCCTATTTGTCTGGAGCTCTTTGAGGACCTCTTCTACTGC  
 CCTGCGCACACAGCCTCTGCTTCAACTGCGCCACCGCATCCTAGTATCACACTGTGCCACCAACGAGTC  
 TGTGGAGTCCATCACCGCTTCCAGTGCCCCACCTGCCGGCATGTCATCACCTCAGCCAGCGAGGTCTA  
 GACGGGCTCAAGCGCAACGTCAACCTACAGAACATCATCGACAGGTTCCAGAAAGCATCAGTGAGCGGGC  
 CCAACTCTCCAGCGAGACCCGTCGGGAGCGGGCTTTGACGCCAACACCATGACCTCCGCCGAGAAGGT  
 CCTCTGCCAGTTTGTGACCAGGATCCTGCCAGGACGCTGTGAAGACCTGTGTCACTTGTGAAGTATCC  
 TACTGTGACGAGTGCCTGAAAGCCACTCACCCGAATAAGAAGCCCTTTACAGGCCATCGTCTGATTGAGC  
 CAATTCGGACTCTCACATCCGGGGCTGATGTGCTTGGAGCATGAGGATGAGAAGGTGAATATGTACTG  
 TGTGACCGATGACCAGTTAATCTGTGCCTTGTGTAAGTGGTGGGCGGCACCGCATCATCAGGTGGCA  
 GCTTTGAGTGAGCGCTATGACAAATTGAAGCAAACTTAGAGAGTAACCTCACCAACCTTATTAAGAGGA  
 ACACAGAACTGGAGACCTTTTGCTAACTCATCCAAACCTGTCAACATGTTGAAGTCAATGCATCACG  
 TCAAGAAGCCAAATTGACAGAGGAGTGTGATCTTCTCATTGAGATCATTAGCAAGACGACAGATTATT  
 GGAACCAAGATCAAGAAGGGAAGGTGATGAGGCTTCGAAACTGGCTCAGCAGATTGCAAACTGCAAAAC  
 AGTGCAATTGAGCGGTGAGCATCACTCATCTCCAAAGCGGAACACTCTCTGAAGGAGAATGATCATGCGCG  
 TTTCTACAGACTGCTAAGAATATCACCGAGAGAGTCTCCATGGCAACTGCATCCTCCAGGTTCTAATT  
 CCTGAAATCAACCTCAATGACACATTTGACACCTTTGCCTTAGATTTTCCCGAGAGAAGAACTGCTAG  
 AATGTCTGGATTACCTTACAGCTCCCAACCCTCCACAATTAGAGAAGAGCTCTGCACAGCTTCATATGA  
 CACCATCACTGTGCAATTGGACCTCCGATGATGAGTTCAGCGTGGTCTCCTACGAGCTCCAGTACACCATA  
 TTCACCGGACAAGCCAACGTCGTTAGTCTGTGTAATTCGGCTGATAGCTGGATGATAGTACCCAACATCA  
 AGCAGAACCCTACACGGTGCACGGTCTGCAGAGCGGCACCAAGTACATCTTCATGGTCAAGGCCATCAA  
 CCAGGCGGGCAGCCGAGCAGTGAAGTGGGAAGTTGAAGACAAACAGCCAACCATTTAACTGGATCCC  
 AAATCTGCTCATCGAAACTGAAGGTGTCCATGATAACTTGACAGTAGAACGTGATGAGTCATCATCCA  
 AGAAGAGTCACACACCTGAACGCTTCACAGCCAGGGGAGCTATGGAGTAGCTGGAAATGTGTTTATTGA  
 TAGTGGCCGCATTATTGGGAAGTGGTCATAAGTGAAGCACATGGTATGCCATTGGTCTTGCTTACAAA  
 TCAGCCCCGAAGCATGAATGGATTGGGAAGAACTCTGCTTCTGGGCGCTCTGCCCTGCAACAATAACT  
 GGGTGGTGAGACACAATAGCAAGGAAATCCCCATTGAGCCTGCCCCCACCTCCGGCGCGTGGGCATCCT  
 GCTGGACTATGATAACGGCTCTATCGCCTTTTATGATGCTTTGAACTCCATCCACCTCTACACCTTCGAC  
 GTCGCAATTTGCGCAGCCTGTTTGCCCCACCTTCACCGTGTGGAACAAGTGTCTGACGATTATCACTGGGC  
 TCCCTATCCCAGACCATTTGGACTGCACAGAGCAGCTGCCG

**ACGCGT**ACGCGGGCGCTCGAGCAGAACTCATCTCAGAAGAGGATCTGGCAGCAAATGATATCCTGGATT  
 ACAAGGATGACGACGATAAGGTTTAA

**Protein Sequence:** >RC213454 representing NM\_001098624  
 Red=Cloning site Green=Tags(s)

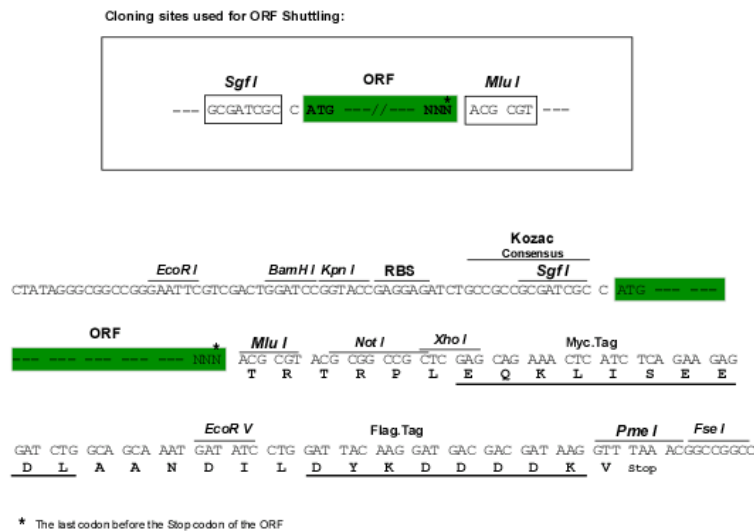
METLESELTCPICLELFEDPLLLPCAHSLCFNCAHRILVSHCATNESVESITAFQCPTCRHVITLSQRGL  
 DGLKRNVTLQNIIDRFQKASVSGPNPSETRRERAFDANTMTSAEKVLCQFCDQDPAQDAVKTCVTCEVS  
 YCDECLKATHPNKKPFTGHRLEIPDISHIRGLMCLHEDEKVNMYCVTDDQLICALCKLVGRHRDHQVA  
 ALSERYDKLKQNLNLTNLIKRNTLETLLAKLIQTCQHVEVNASRQEAKLTEECDLLIEIIQRRQII  
 GTKIKEGKVMRLRKLAAQIANCKQCIERSASLISQAEHSLKENDHARFLQTAKNITERVSMATASSQVLI  
 PEINLNDTFDTFALDFSREKKLLECLDYLTAPNPPTIREELCTASYDTITVHWTSDDEFSSVSYELQYTI  
 FTGQANVVSLSADSWMIVPNIKQNHVTVHGLQSGTKYIFMVKAINQAGRSSEPGLKLTNSQPFKLDLP  
 KSAHRKLKVSNDLTVRDESSSKSHTPERFTSQGSYGVAGNVFIDSGRHYWEVVISGSTWYAIGLAYK  
 SAPKHEWIGKNSASWALCRCNNWVVRHNSKEIPIEPAPHLRRVGILLDYDNGSIAFYDALNSIHLTYFD  
 VAFAQPVCPFTFTVWNKCLTIITGLPIPDHLDCTEQLP

TRTRPLEQKLISEEDLAANDILDYKDDDDKV

**Chromatograms:** [https://cdn.origene.com/chromatograms/mg2877\\_b11.zip](https://cdn.origene.com/chromatograms/mg2877_b11.zip)

**Restriction Sites:** SgfI-MluI

**Cloning Scheme:**



**ACCN:** NM\_001098624

**ORF Size:** 2001 bp

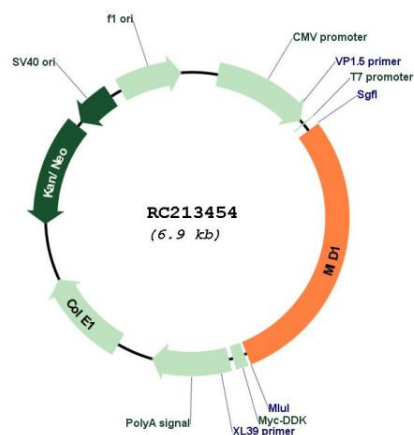
**OTI Disclaimer:** The molecular sequence of this clone aligns with the gene accession number as a point of reference only. However, individual transcript sequences of the same gene can differ through naturally occurring variations (e.g. polymorphisms), each with its own valid existence. This clone is substantially in agreement with the reference, but a complete review of all prevailing variants is recommended prior to use. [More info](#)

**OTI Annotation:** This clone was engineered to express the complete ORF with an expression tag. Expression varies depending on the nature of the gene.

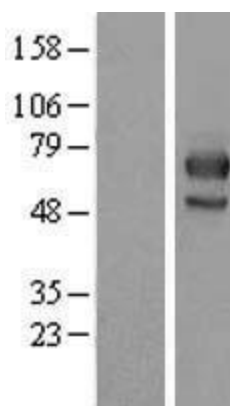
**Components:** The ORF clone is ion-exchange column purified and shipped in a 2D barcoded Matrix tube containing 10ug of transfection-ready, dried plasmid DNA (reconstitute with 100 ul of water).

<b>Reconstitution Method:</b>	<ol style="list-style-type: none"> <li>1. Centrifuge at 5,000xg for 5min.</li> <li>2. Carefully open the tube and add 100ul of sterile water to dissolve the DNA.</li> <li>3. Close the tube and incubate for 10 minutes at room temperature.</li> <li>4. Briefly vortex the tube and then do a quick spin (less than 5000xg) to concentrate the liquid at the bottom.</li> <li>5. Store the suspended plasmid at -20°C. The DNA is stable for at least one year from date of shipping when stored at -20°C.</li> </ol>
<b>RefSeq:</b>	<u>NM_001098624.2, NP_001092094.1</u>
<b>RefSeq Size:</b>	6147 bp
<b>RefSeq ORF:</b>	2004 bp
<b>Locus ID:</b>	4281
<b>UniProt ID:</b>	<u>O15344</u>
<b>Cytogenetics:</b>	Xp22.2
<b>Protein Families:</b>	Druggable Genome
<b>Protein Pathways:</b>	Ubiquitin mediated proteolysis
<b>MW:</b>	75.1 kDa
<b>Gene Summary:</b>	<p>The protein encoded by this gene is a member of the tripartite motif (TRIM) family, also known as the 'RING-B box-coiled coil' (RBCC) subgroup of RING finger proteins. The TRIM motif includes three zinc-binding domains, a RING, a B-box type 1 and a B-box type 2, and a coiled-coil region. This protein forms homodimers which associate with microtubules in the cytoplasm. The protein is likely involved in the formation of multiprotein structures acting as anchor points to microtubules. Mutations in this gene have been associated with the X-linked form of Opitz syndrome, which is characterized by midline abnormalities such as cleft lip, laryngeal cleft, heart defects, hypospadias, and agenesis of the corpus callosum. This gene was also the first example of a gene subject to X inactivation in human while escaping it in mouse. Alternative promoter use, alternative splicing and alternative polyadenylation result in multiple transcript variants that have different tissue specificities. [provided by RefSeq, Dec 2016]</p>

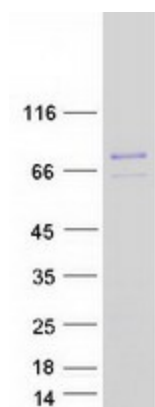
## Product images:



Circular map for RC213454



Western blot validation of overexpression lysate (Cat# [LY420647]) using anti-DDK antibody (Cat# [TA50011-100]). Left: Cell lysates from un-transfected HEK293T cells; Right: Cell lysates from HEK293T cells transfected with RC213454 using transfection reagent MegaTran 2.0 (Cat# [TT210002]).



Coomassie blue staining of purified MID1 protein (Cat# [TP313454]). The protein was produced from HEK293T cells transfected with MID1 cDNA clone (Cat# RC213454) using MegaTran 2.0 (Cat# [TT210002]).