

## Product datasheet for **RC213444**

### Gemin 8 (GEMIN8) (NM\_017856) Human Tagged ORF Clone

#### Product data:

Product Type:	Expression Plasmids
Product Name:	Gemin 8 (GEMIN8) (NM_017856) Human Tagged ORF Clone
Tag:	Myc-DDK
Symbol:	Gemin 8
Synonyms:	FAM51A1
Mammalian Cell Selection:	Neomycin
Vector:	pCMV6-Entry (PS100001)
E. coli Selection:	Kanamycin (25 ug/mL)
ORF Nucleotide Sequence:	>RC213444 ORF sequence Red=Cloning site Blue=ORF Green=Tags(s)

TTTTGTAATACGACTCACTATAGGGCGGCCGGAATTCGTCGACTGGATCCGGTACCGAGGAGATCTGCC  
GCC**CGATCGCC**

ATGGCAGCGGTAAGGCATCAACATCGAAAGCTACCAGGCCTTGGTATTCTCATCCGGTATATGCAAGAT  
ACTGGCAACATTATCATCAAGCAATGGCTTGGATGCAAAGCCATCACAATGCCTACAGGAAGGCCGTGGA  
ATCCTGTTTCAATCTTCCATGGTACTTACCTTCTGCGCTTCTTCCCAAAGCTTTACGATAATGAGGCT  
GCGTATCCTCAGTCTTCTATGACCATCATGTGGCCTGGCAGGACTACCCCTGCAGTTCTTCACATTTCA  
GAAGATCTGGGCAGCATCCACGTTACAGCAGTAGGATCCAGGCATCCACAAAAGAAGACCAAGCTTTGTC  
CAAAGAGGAAGAGATGGAGACTGAGTCAGATGCAGAGGTAGAATGTGACCTGAGCAATATGGAAATCACT  
GAAGAGCTCCGCCAGTACTTTGCAGAGACCAGAGGCATAGAGAAGAACGACGGCGGCAGCAGCAGCTGG  
ATGCAGAGCGCCTGGACAGCTATGTGAACGCTGACCACGACCTGTACTGCAACACCCGCCGGTCGGTAGA  
AGCCCCAACTGAGAGGCCTGGTGAAGCGGCCAGGCCGAGATGAAGCGTTTGTACGGGGACAGTGCCTGCC  
AAGATCCAAGCCATGGAGGCCGCGGTGCAGCTGAGCTTTGACAAGCACTGTGACCGAAAGCAGCCCAAGT  
ACTGGCCGGTCATCCCCCTGAAGTTC

**ACGCGT**ACGCGGCCGCTCGAGCAGAACTCATCTCAGAAGAGGATCTGGCAGCAAATGATATCCTGGATT  
ACAAGGATGACGACGATAAGGTTTAA



[View online »](#)



**Reconstitution Method:**

1. Centrifuge at 5,000xg for 5min.
2. Carefully open the tube and add 100ul of sterile water to dissolve the DNA.
3. Close the tube and incubate for 10 minutes at room temperature.
4. Briefly vortex the tube and then do a quick spin (less than 5000xg) to concentrate the liquid at the bottom.
5. Store the suspended plasmid at -20°C. The DNA is stable for at least one year from date of shipping when stored at -20°C.

**RefSeq:** [NM\\_017856.3](#)

**RefSeq Size:** 3259 bp

**RefSeq ORF:** 729 bp

**Locus ID:** 54960

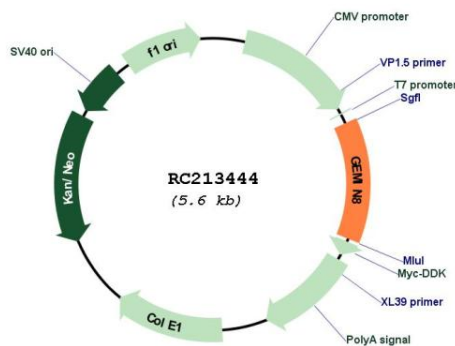
**UniProt ID:** [Q9NWZ8](#)

**Cytogenetics:** Xp22.2

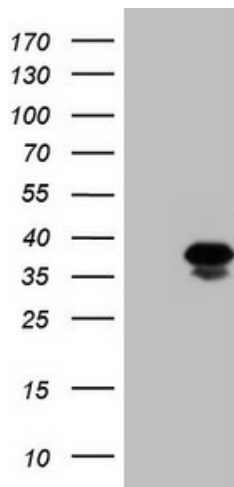
**MW:** 28.6 kDa

**Gene Summary:** The protein encoded by this gene is part of the SMN complex, which is necessary for spliceosomal snRNP assembly in the cytoplasm and pre-mRNA splicing in the nucleus. The encoded protein binds to both SMN1 and the GEMIN6/GEMIN7 heterodimer, mediating their interaction. This protein is found in nuclear Gemini of Cajal bodies (gems) and in the cytoplasm. Three transcript variants encoding the same protein have been found for this gene. [provided by RefSeq, May 2010]

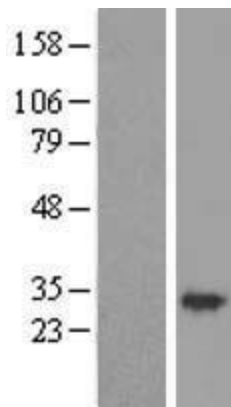
**Product images:**



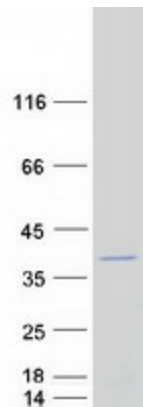
Circular map for RC213444



HEK293T cells were transfected with the pCMV6-ENTRY control (Cat# [PS100001], Left lane) or pCMV6-ENTRY GEMIN8 (Cat# RC213444, Right lane) cDNA for 48 hrs and lysed. Equivalent amounts of cell lysates (5 ug per lane) were separated by SDS-PAGE and immunoblotted with anti-GEMIN8 (Cat# [TA805836])(1:2000). Positive lysates [LY413420] (100ug) and [LC413420] (20ug) can be purchased separately from OriGene.



Western blot validation of overexpression lysate (Cat# [LY413420]) using anti-DDK antibody (Cat# [TA50011-100]). Left: Cell lysates from untransfected HEK293T cells; Right: Cell lysates from HEK293T cells transfected with RC213444 using transfection reagent MegaTran 2.0 (Cat# [TT210002]).



Coomassie blue staining of purified GEMIN8 protein (Cat# [TP313444]). The protein was produced from HEK293T cells transfected with GEMIN8 cDNA clone (Cat# RC213444) using MegaTran 2.0 (Cat# [TT210002]).