

Product datasheet for RC213443L1

TRPM1 (NM_002420) Human Tagged Lenti ORF Clone

Product data:

Product Type:	Expression Plasmids
Product Name:	TRPM1 (NM_002420) Human Tagged Lenti ORF Clone
Tag:	Myc-DDK
Symbol:	TRPM1
Synonyms:	CSNB1C; LTRPC1; MLSN1
Mammalian Cell Selection:	None
Vector:	pLenti-C-Myc-DDK (PS100064)
E. coli Selection:	Chloramphenicol (34 ug/mL)
ORF Nucleotide Sequence:	The ORF insert of this clone is exactly the same as(RC213443).
Restriction Sites:	SgfI-MluI
Cloning Scheme:	

Cloning sites used for ORF Shuttling:



* The last codon before the Stop codon of the ORF.

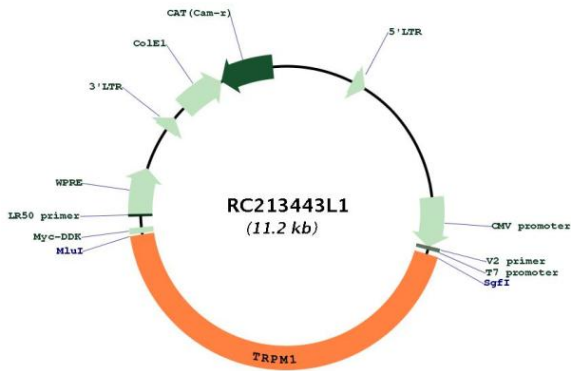
ACCN:	NM_002420
ORF Size:	4809 bp



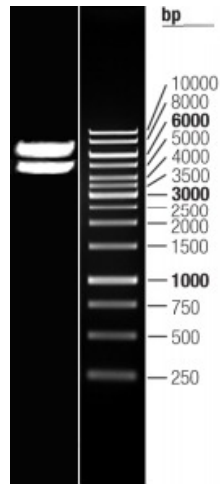
[View online »](#)

OTI Disclaimer:	<p>Due to the inherent nature of this plasmid, standard methods to replicate additional amounts of DNA in E. coli are highly likely to result in mutations and/or rearrangements. Therefore, OriGene does not guarantee the capability to replicate this plasmid DNA. Additional amounts of DNA can be purchased from OriGene with batch-specific, full-sequence verification at a reduced cost. Please contact our customer care team at custsupport@origene.com or by calling 301.340.3188 option 3 for pricing and delivery.</p> <p>The molecular sequence of this clone aligns with the gene accession number as a point of reference only. However, individual transcript sequences of the same gene can differ through naturally occurring variations (e.g. polymorphisms), each with its own valid existence. This clone is substantially in agreement with the reference, but a complete review of all prevailing variants is recommended prior to use. More info</p>
OTI Annotation:	<p>This clone was engineered to express the complete ORF with an expression tag. Expression varies depending on the nature of the gene.</p>
Components:	<p>The ORF clone is ion-exchange column purified and shipped in a 2D barcoded Matrix tube containing 10ug of transfection-ready, dried plasmid DNA (reconstitute with 100 ul of water).</p>
Reconstitution Method:	<ol style="list-style-type: none">1. Centrifuge at 5,000xg for 5min.2. Carefully open the tube and add 100ul of sterile water to dissolve the DNA.3. Close the tube and incubate for 10 minutes at room temperature.4. Briefly vortex the tube and then do a quick spin (less than 5000xg) to concentrate the liquid at the bottom.5. Store the suspended plasmid at -20°C. The DNA is stable for at least one year from date of shipping when stored at -20°C.
RefSeq:	NM_002420.4
RefSeq Size:	5428 bp
RefSeq ORF:	4812 bp
Locus ID:	4308
UniProt ID:	Q7Z4N2
Cytogenetics:	15q13.3
Domains:	ion_trans
Protein Families:	Druggable Genome, Ion Channels: Transient receptor potential, Transmembrane
MW:	182 kDa
Gene Summary:	<p>This gene encodes a member of the transient receptor potential melastatin subfamily of transient receptor potential ion channels. The encoded protein is a calcium permeable cation channel that is expressed in melanocytes and may play a role in melanin synthesis. Specific mutations in this gene are the cause autosomal recessive complete congenital stationary night blindness-1C. The expression of this protein is inversely correlated with melanoma aggressiveness and as such it is used as a prognostic marker for melanoma metastasis. Alternate splicing results in multiple transcript variants. [provided by RefSeq, Oct 2011]</p>

Product images:



Circular map for RC213443L1



Double digestion of RC213443L1 using SgfI and MluI