

Product datasheet for **RC213441**

ORP1 (OSBPL1A) (NM_080597) Human Tagged ORF Clone

Product data:

| | |
|---------------------------|---|
| Product Type: | Expression Plasmids |
| Product Name: | ORP1 (OSBPL1A) (NM_080597) Human Tagged ORF Clone |
| Tag: | Myc-DDK |
| Symbol: | ORP1 |
| Synonyms: | ORP-1; ORP1; OSBPL1B |
| Mammalian Cell Selection: | Neomycin |
| Vector: | pCMV6-Entry (PS100001) |
| E. coli Selection: | Kanamycin (25 ug/mL) |



[View online »](#)

ORF Nucleotide Sequence:

>RC213441 representing NM_080597
 Red=Cloning site Blue=ORF Green=Tags(s)

TTTTGTAATACGACTCACTATAGGGCGGCCGGAATTCGTCGACTGGATCCGGTACCGAGGAGATCTGCC
 GCC**CGCATCGCC**

ATGAACACAGAAGCGGAGCAACAGCTTCTCCATCACGCCAGAAATGGCAATGCTGAAGAAGTAAAGACAAC
 TATTAGAGACCATGGCGAGGAATGAAGTATTGCTGACATTAATTGCAAAGGAAGAAGTAAAGTCTAACTT
 GGGCTGGACACCTCTACATCTGGCATGCTATTTTGGACACAGACAAGTGGTCCAGGATCTGTTGAAGGCT
 GGTGCAGAAGTGAATGTGTTGAATGACATGGGAGACACGCCGCTTCATCGAGCTGCCTTTACAGGACGAA
 AGGAGTTGGTAATGCTTCTTTAGAATAAATGCTGATACTACTATTGTTAATGGGAGTGGACAGACAGC
 AAAAGAAGTTACTCATGCTGAAGAAATCAGAAGCATGCTGAAGCTGTAGAAAGGACTCAACAAAGAAAAG
 CTTGAAGAATTACTTTTAGCAGCAGCAAGAGAAGGCAAAAACAACAAGACTCACAGCTCTGCTCAACAGGC
 CCAATCCTCCTGATGTTAACTGTTCCGATCAGTTAGGAAATACACCTTGCATTGTGCAGCTTACCGGGC
 CCATAAACAATGTGCCTTAAAGCTTCTAAGAAGTGGAGCAGACCCTAATCTGAAGAACAATAATGATCAG
 AAACCTCTTGACCTTGCCAGGGTGTGAAATGAAACACATTCTTGTGGTAATAAGGTCACTACAAAAG
 CATTGAAACGATATGAGGGCCCTCTCTGGAAGAGTTCAAGATTTTTTGGCTGGAGATTATCTGGGTAGT
 GTTAGAGCATGGAGTCTTTTATGGTATAGGAAACAGCCTGATGCAGTTCATAATATTTATCGCCAGGGA
 TGCAAACACCTGACTCAAGCAGTATGCACGGTAAAATCCACTGATAGCTGCCTCTCTTTATTAATGCT
 TTGATGACACCATTATGGCTTCCGGTTCCTAAGAATAGCCTTCAGCAGTCAAGAGAGGACTGGCTGGA
 AGCAATAGAAGAACATTTGCTTACAGCACTCACTACTGTTCCAGGACCAGCTGACTGATGAGGAGGAG
 GAAGATACGGTTTCTGCTGCAGACCTGAAGAAATCATTAGAGAAGCACAGTCAAGCAACAGCGACTAG
 ATAGGGAATTTCCAACCTTCTCAAATGATTAAAGGAGTGTGACATGGCTAAAGAAATGCTTCCATCATT
 TCTTCAGAAAGTTGAAGTTGTCTCAGAAGCTTCTAGAGAACTTGTGTAGCTTTGACTGATTGCCTTAAT
 CTCTTACCAAACAAGAAGGGGTGAGGAATTTTAAATTGGAACAAGAGCAAGAAAAAACAATACTTGT
 CAGAAGCACTGGAGACGCTGGCCACTGAACATCATGAATTAGAGCAGTCTCTGGTGAAGGCTCTCCACC
 CGCCAGCATCCTTAGCGAGGACGAGTCTATGATGCGCTGTGAGATTCCGAGTCCGAAAGGTCCTGAGT
 AGATTGGAAGCAGTGCAGCAGCTCCTTTGAGAGGAAGGAGAGCATTGGGCAGTAGAAAACACAGAA
 TGTCGGAAGAAAAGACTGTGGTGGCGGAGATGCTCTCCAATGGCATCAAGAAAACACAGAAACAAGTTT
 GCCTTCTCCTATGTTTTCCAGAAATGACTTCAGTATCTGGAGCATCCTCAGAAAATGATTGGAATGGAA
 CTATCCAAGATCACGATGCCAGTTATATTTAATGAGCCTCTGAGCTTCTACAGCGCTAACTGAATACA
 TGGAGCATACTTACCTCATCCACAAGGCCAGTTCACTCTCTGATCCTGTGAAAGGATGCAGTGTGTAGC
 TGGCTTTGCTGTATCTGCTGTTGCTTCTCAGTGGGAACGGACTGGAAAACCTTTCAACCCACTGCTGGGA
 GAGACTTATGAATTAGTGCAGATGACCTTGGATTTAGACTCATCTCCGAACAGGTGAGCCATCACCCAC
 CAATCAGTGCATTTATGCTGAAGGATTAACAATGACTTCATCTTTTATGGCTCTATCTATCCAAACT
 GAAATTTGGGGGAAGAGTGTAGAAGCAGAACCCAAAGGAACCATCACCTTGGAGCTCCTTGAACACAAT
 GAGGCATATACATGGACAAAATCCACCTGCTGTGTGCATAATATCATTGTGGGTAACCTGTGGATCGAAC
 AGTATGGCAATGTGGAATTTAACCACAAGACTGGGGACAAAATGTGTGTTGAATTTAAGCCATGTGG
 CCTTTTTGGTAAGGAATTACACAAGTTGAAGGCTACATTCAAGATAAAAGCAAAAAGAAGCTCTGTGCC
 CTCTATGGGAAGTGGACTGAATGTTTATACAGTGTGACCTGCCACGTTTACAGCTTACAAAAAATG
 ATAAGAAAAATACAGAAGAGAAGAAGAACGAAACAGATGAGCACCTCTGAGGAGTTGGATGAAATGCC
 AGTGCCGATTCTGAAAGTGTATTATTATCCCTGGAAGCGTTCTTCTATGGCGAATAGCCCCACGGCT
 CCAAATCTGCCAGATGTATAATTTTACTAGTTTTGCAATGGTTTTGAATGAAGTAGACAAAGACATGG
 AGAGTGTGATTCCAAGACAGACTGCAGGTTACGGCTGACATCAGAGCCATGGAAAATGGAGAGATAGA
 TCAAGCTAGTGAAGAAAAAACGACTTGAGGAAAAACAAGAGCAGCCCGCAAAAACAGGTCCAAGTCA
 GAAGAGGACTGGAAGACGAGTGGTCCATCAAGGTCCTAATCCCTACAATGGAGCACAGGACTGGATTT
 ACTCTGGCAGCTACTGGACAGAAATTAATTCAATTTGCCTGACATTTAT

ACGCGTACGCGGCCGCTCGAGCAGAAACTCATCTCAGAAGAGGATCTGGCAGCAAATGATATCCTGGATT
 ACAAGGATGACGACGATAAGGTTTAA

Protein Sequence: >RC213441 representing NM_080597
 Red=Cloning site Green=Tags(s)

```
MNTEAEQQLLHHARNGNAAEEVRQLLETMARNEVIADINCKGRSKSNLGTWPLHLACYFGHRQVVQDLLKA
GAEVNVLNDMGDTPLHRAAFTGRKELVMLLLEYNADTTIVNGSGQTAKEVTHAAEIRSMLEAVERTQQRK
LEELLLAAAREGKTTEL TALLNRPNPDPVNCSDQLGNTPLHCAA YRAHKQCALKLLRSGADPNLKNKNDQ
KPLDLAQGAEMKHILVGNKVIYKALKRYEGLWKSSRF GWRLFWVVLEHGVLSWYRKQPDVHNIYRQG
CKHLTQAVCTVKSTD SCLFFIKCFDDTIHGFRVPKNSLQQSREDWLEAIEEHSAYSTHYCSQDQLTDEEE
EDTVSAADLKKSLKAQSCQQRDREISNFLKMIKECDMAKEMLP SFLQKVEVSEASRETCVALTDCLN
LFTKQEGVRNFKLEQEKEKNKILSEALET LATEHHELEQSLVKGSPASILSEDEFYDALSDSESERSLS
RLEAVTARSFEEEGEHLGSRKHRMSEEKDCGGDAL SNGIKKHRTSLPSPMFSRNDFSIWSILRKCIGME
LSKITMPVIFNEPLSFLQRLTEYMEHTYL IHKASSLSDPVERMQVAAF AVSAVASQWERTGKPFNPLLG
ETYELVRDDLGFRLISEQVSHPPISAFHAEGLN NDFIFHGSIYPKLKFVGKSVEAEPKGTITLLELLEHN
EAYTWTNPTCCVHNIIVGKLWIEQYGNVEIINHKTGD KCVLNFKPCGLFGKELHKVEGYIQDKSKKLLCA
LYGKWTECLYSVDPATFDAYKKNDKKNTEEKNSKQ MSTEELDEMPVPDSESVFIIPGSVLLWRIAPRP
PNSAQMYNFTSFAMVLNEVDKDMESVIPKTDCLR PDIRAMENGEIDQASEEKKRLEEKQRAARKNRSKS
EEDWKTRWFHQPNPYNGAQDWIYSGSYWDRNYFNLPDIY
```

TRTRPLEQKLISEEDLAANDILDYKDDDDKV

Chromatograms: https://cdn.origene.com/chromatograms/mk6252_b04.zip

Restriction Sites: SgfI-MluI

Cloning Scheme:

Cloning sites used for ORF Shuttling:



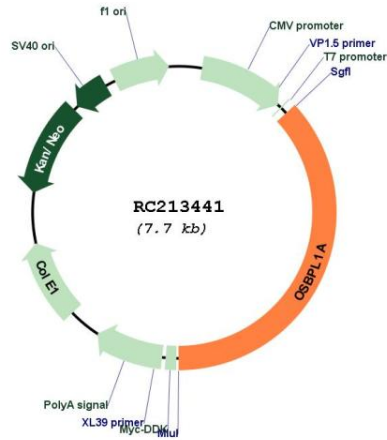
* The last codon before the Stop codon of the ORF

ACCN: NM_080597

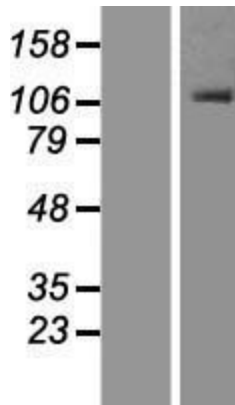
ORF Size: 2850 bp

| | |
|-------------------------------|---|
| OTI Disclaimer: | The molecular sequence of this clone aligns with the gene accession number as a point of reference only. However, individual transcript sequences of the same gene can differ through naturally occurring variations (e.g. polymorphisms), each with its own valid existence. This clone is substantially in agreement with the reference, but a complete review of all prevailing variants is recommended prior to use. More info |
| OTI Annotation: | This clone was engineered to express the complete ORF with an expression tag. Expression varies depending on the nature of the gene. |
| Components: | The ORF clone is ion-exchange column purified and shipped in a 2D barcoded Matrix tube containing 10ug of transfection-ready, dried plasmid DNA (reconstitute with 100 ul of water). |
| Reconstitution Method: | <ol style="list-style-type: none">1. Centrifuge at 5,000xg for 5min.2. Carefully open the tube and add 100ul of sterile water to dissolve the DNA.3. Close the tube and incubate for 10 minutes at room temperature.4. Briefly vortex the tube and then do a quick spin (less than 5000xg) to concentrate the liquid at the bottom.5. Store the suspended plasmid at -20°C. The DNA is stable for at least one year from date of shipping when stored at -20°C. |
| RefSeq: | NM_080597.4 |
| RefSeq Size: | 4165 bp |
| RefSeq ORF: | 2853 bp |
| Locus ID: | 114876 |
| UniProt ID: | Q9BXW6 |
| Cytogenetics: | 18q11.2 |
| Domains: | Oxysterol_BP, PH, ANK |
| MW: | 108.3 kDa |
| Gene Summary: | This gene encodes a member of the oxysterol-binding protein (OSBP) family, a group of intracellular lipid receptors. Most members contain an N-terminal pleckstrin homology domain and a highly conserved C-terminal OSBP-like sterol-binding domain, although some members contain only the sterol-binding domain. Transcript variants derived from alternative promoter usage and/or alternative splicing exist; they encode different isoforms. [provided by RefSeq, Jul 2008] |

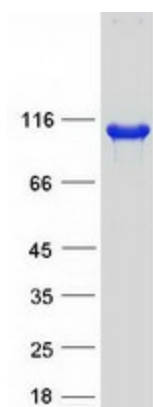
Product images:



Circular map for RC213441



Western blot validation of overexpression lysate (Cat# [LY409143]) using anti-DDK antibody (Cat# [TA50011-100]). Left: Cell lysates from untransfected HEK293T cells; Right: Cell lysates from HEK293T cells transfected with RC213441 using transfection reagent MegaTran 2.0 (Cat# [TT210002]).



Coomassie blue staining of purified OSBPL1A protein (Cat# [TP313441]). The protein was produced from HEK293T cells transfected with OSBPL1A cDNA clone (Cat# RC213441) using MegaTran 2.0 (Cat# [TT210002]).