

Product datasheet for RC213422

Entactin (NID1) (NM_002508) Human Tagged ORF Clone

Product data:

Product Type:	Expression Plasmids
Product Name:	Entactin (NID1) (NM_002508) Human Tagged ORF Clone
Tag:	Myc-DDK
Symbol:	Entactin
Synonyms:	NID
Mammalian Cell Selection:	Neomycin
Vector:	pCMV6-Entry (PS100001)
E. coli Selection:	Kanamycin (25 ug/mL)
ORF Nucleotide Sequence:	>RC213422 representing NM_002508 Red=Cloning site Blue=ORF Green=Tags(s)

TTTTGTAATACGACTCACTATAGGGCGCCGGGAATTCGTCGACTGGATCCGGTACCGAGGAGATCTGCC
GCC**CGATCGCC**

ATGTTGGCCTCGAGCAGCCGGATCCGGGCTGCGTGGACGCGGGCGCTGCTGCTGCCGCTGCTGCTGGCGG
GGCCTGTGGGCTGCCTGAGCCGCCAGGAGCTCTTCCCTTCGGCCCCGGACAGGGGGACCTGGAGCTGGA
GGACGGGGATGACTTCGCTCTCCTGCCCTGGAGCTGAGTGGGGCGCTCCGTTCTACGACAGATCCGAC
ATCGACGCAGTCTACGTACCACAAATGGCATCATTGCTACGAGTGAACCCCGCCAAAGAATCCCATC
CCGGGCTCTCCACCAACATTCGGTGCAGTCGCCCTTTCCTGGCGGACTTGGACACGACCGATGGCCT
GGGAAGGTTTATTATCGAGAAGACTTATCCCCCTCCATCACTCAGCGAGCAGCAGAGTGTGCCACAGA
GGTTCGCCGAGATCTCTTCCAGCCTAGTAGCGCGTGGTTGTCACTTGGGAATCCGTGGCCCCCTACC
AAGGGCCAGCAGGGACCCAGACCAGAAAGGCAAGAGAAACACGTTCCAGGCTGTTCTAGCCTCCTCTGA
TTCCAGCTCCTATGCCATTTTCTTTATCCTGAGGATGGTCTGCAGTTCATACGACATTCTCAAAGAAG
GAAAACAACCAAGTTCCTGCCGTGGTGCATTCAAGTTCAGTGGGATTCTATGGAAGAGCAACG
GAGCTTATAACATATTTGCTAATGACAGGAATCAATTGAAAATTTGGCCAAGAGTAGTAACTCTGGGCA
GCAGGGTGTCTGGGTGTTGAGATTGGGAGTCCAGCCACCACCAATGGCGTGGTGCCTGCAGACGTGATC
CTCGAACTGAAGATGGGGCAGAGTATGATGATGAGGATGAAGATTATGACCTGGCGACCACTCGTCTGG
GCCTGGAGGATGTGGGCACCACGCCCTTCTCTACAAGGCTCTGAGAAGGGGAGGTGCTGACACATACAG
TGTGCCAGCGTCTCTCCCCGCGCCGGCAGCTACCGAAAGGCCCTTGGACCTCCACAGAGAGAACC
AGGTCTTTCAGTTGGCAGTGGAGACTTTTACCAGCAGCACCCCTCAGGTCATAGATGTGGATGAAGTTG
AGGAAACAGGAGTTGTTTTCAGCTATAACACGGATTCCCGCCAGACGTGTGCTAACAAACAGACACCAGTG
CTCGGTGCACGCAGAGTGCAGGGACTACGCCACGGGCTTCTGCTGCAGCTGTGTCGCTGGCTATACGGC
AATGGCAGGCAATGTGTTGCAGAAGTTCCCCCAGCGAGTCAATGGCAAGGTGAAAGGAAGGATCTTTG
TGGGGAGCAGCCAGGTCCCCATTGTCTTTGAGAACTGACCTCCACTTACGTAGTAAATGAACACGG
GCCTCTACACAGCCATCAGCACCATTCCCGAGACCGTTGGATATTCTCTGCTTCCACTGGCCCCAGTT



[View online »](#)

GGAGGCATCATTGGATGGATGTTTGCAGTGGAGCAGGACGGATTCAAGAATGGGTTTCAGCATCACCGGGG
GTGAGTTCACTCGCCAGGCTGAGGTGACCTTCGTGGGGCACCCGGGAATCTGGTCATTAAGCAGCGGT
CAGCGGCATCGATGAGCATGGGCACCTGACCATCGACACGGAGCTGGAGGGCCGCGTGCCGCAGATTCCG
TTCGGCTCCTCCGTGCACATTGAGCCCTACACGGAGCTGTACCACTACTCCACCTCAGTGATCACTTCT
CCTCCACCCGGGAGTACACGGTACTGAGCCCGAGCGAGATGGGGCATCTCCTTCACGCATCTACACTTA
CCAGTGGCGCCAGACCATCACCTCCAGGAATGCGTCCACGATGACTCCCGCCAGCCCTGCCAGCACC
CAGCAGCTCTCGGTGGACAGCGTGTTCGTCTGTACAACCAGGAGGAGAAGATCTTGCGTATGCTCTCA
GCAACTCCATTGGGCCTGTGAGGGAAGGCTCCCTGATGCTCTTCAAGAATCCCTGCTACATCGGCACTCA
TGGGTGTGACACCAACCGCGCCTGTGCGCCTGGTCCCAGGACACAGTTACCTGCGAGTGCTCCATCGGC
TTCGAGGAGACGGGCGAACCTGCTATGATATTGATGAATGTTTCAAGAACAACCCTCAGTGTGTGGGAGCC
ACACAATCTGCAATAATCACCCAGGAACCTTCCGCTGCGAGTGTGTGGAGGGCTACCAGTTTTAGATGA
GGGAACGTGTGTGGTGTGTTGGACCAGCGCCCATCACTACTGTGAACTGGCCTTCATAACTGCGAC
ATACCCACGCGGGCCAGTGTATCTACACAGGAGGCTCCTCTACACCTGTTCTGCTTGCCAGGCTTTT
CTGGGGATGGCCAAGCTGCCAAGATGTGGATGAATGCCATCCAAGCCGATGTCACCCTGACGCCTTCTG
CTACAACACTCCAGGCTCTTTCAGTGCAGTGAACCTGGTTATCAGGGAGACGGCTTCCGTTGCGTG
CCCGGAGAGGTGGAGAAAACCCGGTGCCAGCACGAGCGAGAACACATTCTCGGGGACGGGGGGCAGAC
ACCCACAGCGACCCATTCTCCGGGGCTGTTCTGTTCTGAGTGGATGCGCACGGGCACTACGCGCCAC
CCAGTGCCACGGCAGCACCGGCTACTGCTGGTGGTGGATCGCGACGGCCGCGAGGTGGAGGGCACCAGG
ACCAGGCCCGGGATGACGCCCGTGTCTGAGTACAGTGGCTCCCCGATTACCAAGGACCTGCGGTGC
CTACCGCGTGTATCCCTTGCTCTGGGACCCATTTACTCTTTGCCAGACTGGGAAGATTGAGCGCT
GCCCCTGGAGGGAAATACCATGAGGAAGACAGAAGCAAAGGCGTTCCTTCATGTCCCGGCTAAAGTCATC
ATTGGACTGGCCTTTGACTGCGTGGACAAGATGGTTTACTGGACGGACATCACTGAGCCTCCATTGGGA
GAGCTAGTCTACATGGTGGAGAGCCAACCACCATATTAGACAAGATCTTGGAAAGTCCAGAAGGTATCGC
TGTTGATCACCTTGGCCGCAACATCTTCTGGACAGACTCTAACCTGGATCGAATAGAAGTGGCGAAGCTG
GACGGCACGCAGCGCGGGTGTCTTTGAGACTGACTTGGTGAATCCCAGAGGCATTGTAACGGATTCCG
TGAGAGGGAACCTTTACTGGACAGACTGGAACAGAGATAACCCCAAGATTGAAACTTCTACATGGACGG
CACGAACCGGAGGATCCTTGTGCAGGATGACCTGGGCTTGCCCAATGGACTGACCTTCGATGCGTTCTCA
TCTCAGCTCTGCTGGTGGATGCAGGCACCAATCGGGCGGAATGCCTGAACCCAGTCCAGCCAGCAGAC
GCAAGGCTCTCGAAGGGCTCCAGTATCCTTTGCTGTGACGAGCTACGGGAAGAATCTGTATTTACAGA
CTGGAAGATGAATCCGTGGTTGCTCTCGATCTTGCAATTTCCAAGGAGACGGATGCTTTCAACCCAC
AAGCAGACCCGGCTGTATGGCATCACACGGCCCTGTCTCAGTGTCCGAAGGCCATAACTACTGCTCAG
TGAACAATGGCGGCTGCACCCACCTATGCTTGGCCACCCAGGGAGCAGGACCTGCCGTTGCCCTGACAA
CACCTTGGGAGTTGACTGTATCGAACAGAAA

ACGCGTACGCGGCCGCTCGAGCAGAACTCATCTCAGAAGAGGATCTGGCAGCAATGATATCCTGGATT
ACAAGGATGACGACGATAAGGTTTAA

Protein Sequence: >RC213422 representing NM_002508
 Red=Cloning site Green=Tags(s)

```

MLASSSRIRAAWTRALLPLLLAGPVGCLSRQELFPFGPGQGDLELEDGDDFVSPAELSGALRFYDRSD
IDAVVYVTNGIATSEPPAKESHPLFPPTFGAVAPFLADLDTTDLGKVVYREDLSPSITQRAAECVHR
GFPEISFQPSAVVVTWESVAPYQGPSRDPDQKGRNFTQAVLASDSSSYAIFLYPEDGLQFHFTFSKK
ENNQVPVAVVAFSQGSVGF LWKSN GAYNIFANDRESIENLAKSSNSGQQGVVWFEIGSPATTNGVVPADVI
LGTEDGAEYDDEDEDYDLATTRLLEDVGTTPFSYKALRRGGADTYSVPSVLSPPRAATERPLGPPTERT
RSFQLAVETFHQHPQVIDVDEVEETGVVFSYNTDSRQTCANNRHQCSVHAECDRYATGFCSCVAGYTG
NGRQCVAEGSPQRVNGKVKGRIFVGSQVPIVFENTDLHSYVVMNHGRSYTAISTIPETVGYSLPLAPV
GGIIGWMFAVEQDGFKNFSITGGEFTRQAEVTFVGHGPNLVIKQRFSGIDEHGLTIDTELEGRVPQIP
FGSSVHIEPYTELYHYSTSVITSSSTREYTVTEPERDGASPSRIYTYQWRQTITFQECVHDDSRPALST
QQLSVDSVFLYNQEEKILRYALSNSIGPVREGSPDALQNPCYIGTHGCDTNAACRPGPRTQFTCECSIG
FRGDGRTCYDIDECSEQPSVCGSHTICNNHPGTFRCECVEGYQFSDEGTCVAVVDQRPINYCETGLHNCD
IPQRAQCIYTGSSYTCCLPGFSGDGGACQDVDECHPSRCHPDAFCYNTPGSFTCQCKPGYQGDGFRVCV
PGEVEKTRCQHEREHILGAAGATDPQRIPPLGFVPECDAHGHYAPTQCHGSTGYCWCVDRDGREVEGTR
TRPGMTPPCLSTVAPPIHQGPAVPTAVIPLPPGTHLLFAQTGKIERLPLEGNTMRKTEAKAFLHVPKVI
IGLAFDCVDMVYWDITETPSIGRASLHGGEPTTIIRQDLGSPEGIAVDHLGRNIFWTDNSLDRIEVAKL
DGTQRRVLFETDLVNRGIVTDSVRGNL YWTDWNRDNPKIETSYMDGTNRRILVQDDLGLPNGLTFDAFS
SQLCWVDAGTNRAECLNPSQPSRRKALEGLQYPFAVTSYGKNLYFTDWKMNSVVALDLAISKETDAFQPH
KQTRL YGITTAL SQCPQGHNYCSVNNGGCTHLCLATPGSRTCRCPDNTLGVDCIEQK
  
```

TRTRPLEQKLISEEDLAANDILDYKDDDDKV

Chromatograms: https://cdn.origene.com/chromatograms/mk6168_h04.zip

Restriction Sites: SgfI-MluI

Cloning Scheme:

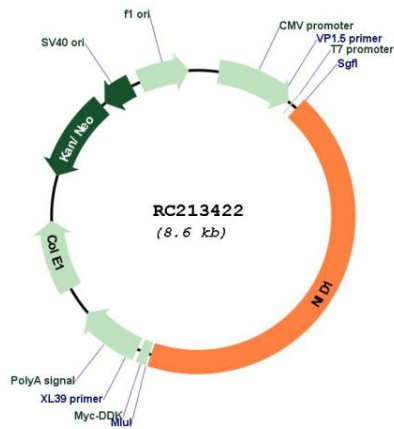


ACCN: NM_002508

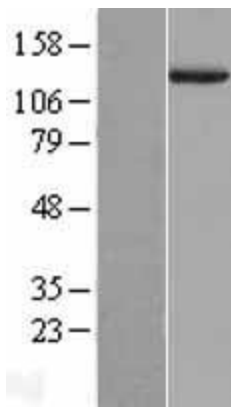
ORF Size: 3741 bp

OTI Disclaimer:	The molecular sequence of this clone aligns with the gene accession number as a point of reference only. However, individual transcript sequences of the same gene can differ through naturally occurring variations (e.g. polymorphisms), each with its own valid existence. This clone is substantially in agreement with the reference, but a complete review of all prevailing variants is recommended prior to use. More info
OTI Annotation:	This clone was engineered to express the complete ORF with an expression tag. Expression varies depending on the nature of the gene.
Components:	The ORF clone is ion-exchange column purified and shipped in a 2D barcoded Matrix tube containing 10ug of transfection-ready, dried plasmid DNA (reconstitute with 100 ul of water).
Reconstitution Method:	<ol style="list-style-type: none">1. Centrifuge at 5,000xg for 5min.2. Carefully open the tube and add 100ul of sterile water to dissolve the DNA.3. Close the tube and incubate for 10 minutes at room temperature.4. Briefly vortex the tube and then do a quick spin (less than 5000xg) to concentrate the liquid at the bottom.5. Store the suspended plasmid at -20°C. The DNA is stable for at least one year from date of shipping when stored at -20°C.
RefSeq:	NM_002508.3
RefSeq Size:	4898 bp
RefSeq ORF:	3744 bp
Locus ID:	4811
UniProt ID:	P14543
Cytogenetics:	1q42.3
Domains:	Idl_recept_b, thyroglobulin_1, EGF_CA, NIDO, EGF, EGF, G2F
Protein Families:	Druggable Genome, Secreted Protein
MW:	136.4 kDa
Gene Summary:	This gene encodes a member of the nidogen family of basement membrane glycoproteins. The protein interacts with several other components of basement membranes, and may play a role in cell interactions with the extracellular matrix. [provided by RefSeq, Jul 2008]

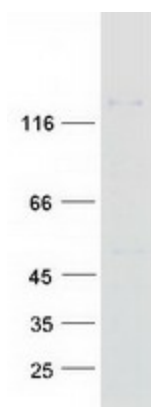
Product images:



Circular map for RC213422



Western blot validation of overexpression lysate (Cat# [LY400896]) using anti-DDK antibody (Cat# [TA50011-100]). Left: Cell lysates from untransfected HEK293T cells; Right: Cell lysates from HEK293T cells transfected with RC213422 using transfection reagent MegaTran 2.0 (Cat# [TT210002]).



Coomassie blue staining of purified NID1 protein (Cat# [TP313422]). The protein was produced from HEK293T cells transfected with NID1 cDNA clone (Cat# RC213422) using MegaTran 2.0 (Cat# [TT210002]).