

## Product datasheet for **RC213418**

### DTX2 (NM\_001102595) Human Tagged ORF Clone

#### Product data:

Product Type:	Expression Plasmids
Product Name:	DTX2 (NM_001102595) Human Tagged ORF Clone
Tag:	Myc-DDK
Symbol:	DTX2
Synonyms:	RNF58
Mammalian Cell Selection:	Neomycin
Vector:	pCMV6-Entry (PS100001)
E. coli Selection:	Kanamycin (25 ug/mL)



[View online »](#)

**ORF Nucleotide Sequence:**

>RC213418 ORF sequence  
 Red=Cloning site Blue=ORF Green=Tags(s)

TTTTGTAATACGACTCACTATAGGGCGGCCGGAATTCGTGACTGGATCCGGTACCGAGGAGATCTGCC  
 GCC**CGGATCGCC**

ATGGCCATGGCCCAAGCCCTTCCTGGTGCAGGTGTACACCAGCCCGGGCTGTGGCCGTGTGGGAAT  
 GGCAGGACGGGCTGGGCACCTGGCACCCCTACAGTGCCACCGTCTGCAGCTTCATCGAGCAGCAGTTTGT  
 CCAGCAGAAGGGCCAACGTTTTGGGCTTGGGAGCCTGGCCACAGCATCCCTTGGGCCAGGCAGACCC  
 TCGCTGGCCCTTACATTATTGACCTCCCCAGCTGGACCCAGTTCGCCAGGACACCGGCACCATGCGGG  
 CTGTGCGGAGACACCTGTTCCCCAGCACTCAGCCCTGGCCGAGGTGTCGTCTGGGAGTGGCTGAGCGA  
 CGATGGCTCCTGGACTGCCTATGAAGCCAGCGTCTGTGACTATCTGGAGCAGCAGGTGGCCAGGGGCAAC  
 CAGCTCGTGGACTTGGCGCCCTGGGGTACAACACTACACTGTCAACTACACCACCCACACGCAGACCAACA  
 AGACTTCCAGCTTTTGGCGAGCGTGGCGGCCAAGCAGGGCCGCTTACCCGGTGACCACCATCATCGC  
 TCCGCCGGCCACACAGGCGTGCCTGCTTGGCACCAGTGCCTCAGTGGCAGCAGAATGGCCCCGTG  
 TCAGGCCGCTACCGCCACTCCATGACCAACCTCCCTGCATACCCCGTCCCCAGCACCCCCACACAGGA  
 CCGCTTCTGTGTTTGGGACCCACAGGCCCTTGCACCGTACAACAACCCCTCACTCTCCGGGGCCCGGTC  
 TGCGCCAGGCTGAACACCACCAACGCCTGGGGCGCAGCTCCTCCTTCCCTGGGGAGCCAGCCCTCTAC  
 CGCTCCAGCCTCTCCACCTGGGACCGCAGCACCTGCCCCAGGATCCTCCACCTCCGGTGCAGTCAGTG  
 CCTCCCTCCCCAGCGTCCCTCAAGCAGCCAGGGAGCGTCCCTGCCACTGTGCCATGCAGATGCCAAA  
 GCCCAGCAGAGTCCAGCAGGCGCTCGCAGGCATGACGAGTGTCTGATGTAGCCATTGGACTCCCTGTG  
 TGTCTTAGCCGCGCACCCAGCCACAGCCCTCCCGCTCCCGTCTGGCTTCCAAAAGTACGCGCTCAG  
 TTAAGAGATTGAGGAAAATGTCCGTGAAAGAAGCGACCCCGAAGCCAGAGCCAGAGCCAGAGGTCAT  
 AAAAAACTACACGGAAGAGCTGAAAGTGCCCCAGATGAGGACTGCATCATCTGCATGGAGAAGCTGCC  
 ACAGCGTCTGGATACAGCGATGTGACTGACAGCAAGGCAATCGGGTCCCTAGCTGTGGGCCACCTACCA  
 AGTGCAGCCATGCCTTCCACCTGCTGTGCCTCCTGGCCATGACTGCAACGGCAATAAGGATGGAAGTCT  
 GCAGTGTCCCTCTGAAAACCATCTATGGAGAGAAGACGGGACCCAGCCCGAGGAAAGATGGAGGTA  
 TTACGGTTCAGATGTGCTCCCGGCCACGAGGACTGCGGGACCATCCTCATAGTTTACAGCATTCCCC  
 ATGGTATCCAGGGCCCTGAGCACCCCAATCCCGGAAAGCCGTTCACTGCCAGAGGGTTTCCCGCCAGTG  
 CTACCTCCAGACAACGCCAGGGCCGCAAGTCTAGAGCTCCTGAAGGTGGCCTGGAAGAGGCGGCTC  
 ATCTTACAGTGGCAGCTCCAGCACACGGGTGAGACGGACACCGTGGTATGGAACGAGATCCACCACA  
 AGACAGAGATGGACCGCAACATTACGGGCCACGGCTATCCCGACCCCAACTACCTGCAGAACGTGCTGGC  
 TGAGTGGCTGCCAGGGGGTGACCGAGGACTGCCTGGAGCAGCAG

**ACGCGT**ACGCGGCCGCTCGAGCAGAACTCATCTCAGAAGAGGATCTGGCAGCAATGATATCCTGGATT  
 ACAAGGATGACGACGATAAGGTTTAA

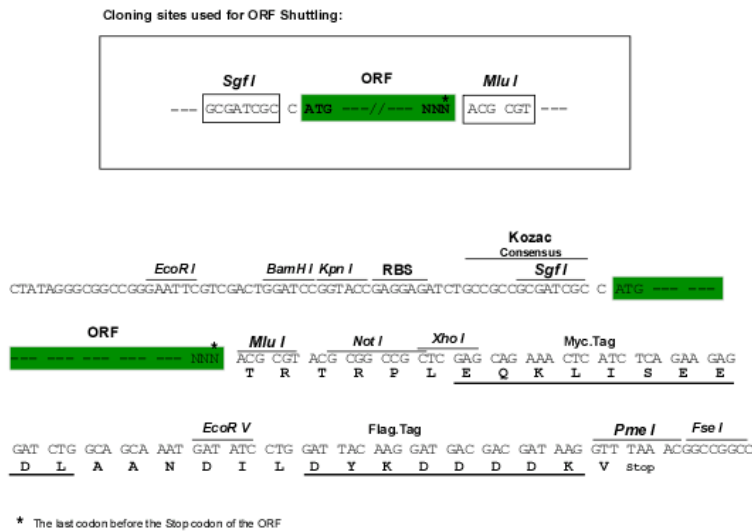
**Protein Sequence:**

>RC213418 protein sequence  
 Red=Cloning site Green=Tags(s)

MAMAPSPSLVQVYTPAAVAVVWEWQDGLTWHYPYSATVCSFIEQQFVQQKQRFGLGSLAHSIPLGQADP  
 SLAPYIIDLPSWTQFRQDTGTMRAVRRHLFPQHSAPGRGVVWEWLSDDGSWTAYEASVCDYLEQQVARGN  
 QLVDLAPLGYNYTVNYTHTQTNKTSFCSRVRQAGPPYVTTIIAPPGHTGVACSCHQCLSGSRTGPV  
 SGRYRHSMTNLPAYVPQHPPHRTASVFGTHQAFAPYNKPSLSGARSAPRLNTTNAWGAAPPPLGSQPLY  
 RSSLSHLGPQHLPPGSSTSGAVSASLPSGPPSSSPGVPATVPMQMPKPSRVQQALAGMTSVLMSAIGLPV  
 CLSRAPQPTSPPARLASKSHGSKRLRKMSVKEATPKPEPEPEQVIKNYTEELKVPPEDECIICMEKLS  
 TASGYSVDTDSKAIGSLAVGHLTKCSHAFHLLCLLAMYCNGNKGSLQCPCKTIYGEKGTQPQGMKV  
 LRFQMSLPGHEDCGTILIVYSIPHGIQGPENPNPKPFTARGFPRQCYLPDQAQGRKVLLELLKVAWKRRLL  
 IFTVGTSSSTTGETDVTVVWNEIHHKTEMDRNIITGHGYPDPNYLQNVLAELAAQGVTEDCLEQQ

**TRTRPLEQKLISEEDLAANDILDYKDDDDKV**

Chromatograms: [https://cdn.origene.com/chromatograms/mk6522\\_e06.zip](https://cdn.origene.com/chromatograms/mk6522_e06.zip)  
 Restriction Sites: SgfI-MluI  
 Cloning Scheme:



ACCN: NM\_001102595

ORF Size: 1866 bp

OTI Disclaimer: The molecular sequence of this clone aligns with the gene accession number as a point of reference only. However, individual transcript sequences of the same gene can differ through naturally occurring variations (e.g. polymorphisms), each with its own valid existence. This clone is substantially in agreement with the reference, but a complete review of all prevailing variants is recommended prior to use. [More info](#)

OTI Annotation: This clone was engineered to express the complete ORF with an expression tag. Expression varies depending on the nature of the gene.

Components: The ORF clone is ion-exchange column purified and shipped in a 2D barcoded Matrix tube containing 10ug of transfection-ready, dried plasmid DNA (reconstitute with 100 ul of water).

Reconstitution Method:

1. Centrifuge at 5,000xg for 5min.
2. Carefully open the tube and add 100ul of sterile water to dissolve the DNA.
3. Close the tube and incubate for 10 minutes at room temperature.
4. Briefly vortex the tube and then do a quick spin (less than 5000xg) to concentrate the liquid at the bottom.
5. Store the suspended plasmid at -20°C. The DNA is stable for at least one year from date of shipping when stored at -20°C.

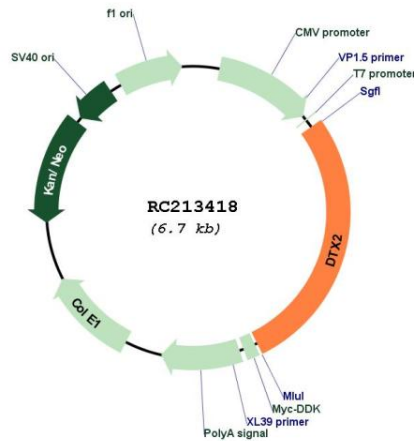
RefSeq: [NM\\_001102595.1](#), [NP\\_001096065.1](#)

RefSeq Size: 2550 bp

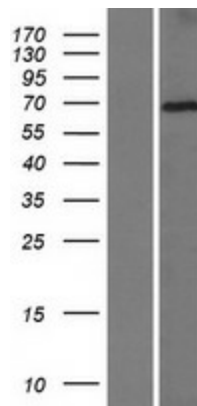
RefSeq ORF: 1869 bp

**Locus ID:** 113878  
**UniProt ID:** [Q86UW9](#)  
**Cytogenetics:** 7q11.23  
**Protein Families:** Druggable Genome  
**Protein Pathways:** Notch signaling pathway  
**MW:** 67.3 kDa  
**Gene Summary:** DTX2 functions as an E3 ubiquitin ligase (Takeyama et al., 2003 [PubMed 12670957]). [supplied by OMIM, Nov 2009]

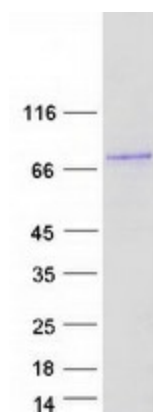
**Product images:**



Circular map for RC213418



Western blot validation of overexpression lysate (Cat# [LY420164]) using anti-DDK antibody (Cat# [TA50011-100]). Left: Cell lysates from untransfected HEK293T cells; Right: Cell lysates from HEK293T cells transfected with RC213418 using transfection reagent MegaTran 2.0 (Cat# [TT210002]).



Coomassie blue staining of purified DTX2 protein (Cat# [TP313418]). The protein was produced from HEK293T cells transfected with DTX2 cDNA clone (Cat# RC213418) using MegaTran 2.0 (Cat# [TT210002]).