

Product datasheet for **RC213415**

A1CF (NM_014576) Human Tagged ORF Clone

Product data:

Product Type:	Expression Plasmids
Product Name:	A1CF (NM_014576) Human Tagged ORF Clone
Tag:	Myc-DDK
Symbol:	A1CF
Synonyms:	ACF; ACF64; ACF65; APOBEC1CF; ASP
Mammalian Cell Selection:	Neomycin
Vector:	pCMV6-Entry (PS100001)
E. coli Selection:	Kanamycin (25 ug/mL)



[View online »](#)

ORF Nucleotide Sequence:

>RC213415 representing NM_014576
 Red=Cloning site Blue=ORF Green=Tags(s)

TTTTGTAATACGACTCACTATAGGGCGGCCGGAATTCGTCGACTGGATCCGGTACCGAGGAGATCTGCC
 GCC**CGCATCGCC**

ATGGAATCAAATCACAATCCGGGGATGGATTGAGCGGCACTCAGAAGGAAGCAGCCCTCCGCGCACTGG
 TCCAGCGCACAGGATATAGCTTGGTCCAGGAAAATGGACAAAGAAAATATGGTGGCCCTCCACCTGGTTG
 GGATGCTGCACCCCTGAAAGGGCTGTGAAATTTTTATTGAAAACTCCCCGAGACCTTTTTGAGGAT
 GAGCTTATACCATTATGTAAAAATCGGTAAAATTTATGAAATGAGAATGATGATGGATTTAATGGCA
 ACAATAGAGGATATGCATTTGTAACATTTTCAAATAAAGTGAAGCCAAGAATGCAATCAAGCAACTTAA
 TAATTATGAAATTAGAAATGGGCGCTCTTAGGGTTTGTGCCAGTGTGGACAACTGCCGATTATTTGTT
 GGGGGCATCCCAAAAACCAAAAAGAGAGAAGAAATCTTATCGGAGATGAAAAGGTTACTGAAGGTGTTG
 TCGATGTCATCGTCTACCAAGCGCTGCAGATAAAAACCAAAAACCGAGGCTTTGCCTTCGTGGAGTATGA
 GAGTCATCGAGCAGCTGCCATGGCGAGGAGGAACTGCTACCAGGAAGAATTCAGTTATGGGGACATGGT
 ATTGCAGTAGACTGGGCAGAGCCAGAAGTAGAAGTTGATGAAGATACAATGTCTTCAGTGAAAATCCTAT
 ATGTAAGAAATCTTATGCTGTCTACCTCTGAAGAGATGATTGAAAAGGAATTCACCAATATCAAACCAGG
 TGCTGTGGAGAGGGTGAAGAAAATTCGAGACTATGCTTTTGTGCACTTCAGTAACCGAGAAGATGCAGTT
 GAGGCTATGAAAGCTTTAAATGGCAAGGTGCTGGATGGTTCACCCATTGAAGTACCCTAGCAAAACCGAG
 TGGACAAGGACAGTTATGTTAGGTATACCCGAGGCACAGGTGGAAGGGGACCATGCTGCAAGGAGAGTA
 TACCTACTCTTTGGCCAAGTTTATGATCCCACCACAACCTACCTGGAGCTCCTGTCTTCTATGCCCCC
 CAGACCTATGCAGCAATCCAGTCTTCAATTTCCAGCCACCAAGGACATCTCAGCAACAGAGCCATTA
 TCCGAGCCCTTCTGTTAGAGGGCTCGGGAGTGAGAGGACTGGGCGGCCGTGGCTATTTGGCATACAC
 AGGCCTGGTTCGAGGATACCAAGTCAAAGGAGACAAAAGAGAAGACAAACTCTATGACATTTTACCTGGG
 ATGGAGCTCACCCAATGAATCCTGTACATTAATAACCCCAAGGAATTAACCTCGCTCCCCAGATATTAG
 AAGAGATTTGTCAGAAAAATAACTGGGGACAGCCAGTGTACCAGCTGCACTCTGCTATTGGACAAGACCA
 AAGACAGCTATTCTTGTACAAAAATACTATTCTGCTCTAGCCAGCCAGAATCCTGCAATCCACCCTTTC
 ACACCTCAAAGCTGAGTGCCTTTGTGGATGAAGCAAAGACGTATGCAGCCGAATACACCCTGCAGACCC
 TGGGCATCCCACTGATGGAGGCGATGGCACCATGGCTACTGCTGCTGCTGCTACTGCTTTCCAGG
 ATATGCTGTCCTAATGCAACTGCACCCGTGTCTGCAGCCAGCTCAAGCAAGCGGTAAACCTTGGACAA
 GACTTAGCAGCATATAACAACCTATGAGGTCTACCAACTTTTGCAGTGACTGCCGAGGGGATGGATATG
 GCACCTTC

ACGCGTACGCGGCCGCTCGAGCAGAACTCATCTCAGAAGAGGATCTGGCAGCAAATGATATCCTGGATT
 ACAAGGATGACGACGATAAGGTTTAA

Protein Sequence:

>RC213415 representing NM_014576
 Red=Cloning site Green=Tags(s)

MESNHKSGDGLSGTQKEAALRALVQRTGYSLVQENGQRKYGGPPPGWDAAPPERGCEIFIGKLPDLFED
 ELIPLCEKIGKIYEMRMMDFNGNRRGYAFVTFSNKVEAKNAIKQLNNEYIRNGRLLGVCASVDNCRFLV
 GGIPKTKKREEILSEMKKVTEGVVDVIVYPSAADKTKNRGFAFVEYESHRAAAMARRKLLPGRIQLWGHG
 IAVDWAEPEVEDEDTMSSVKILYVRNMLSTSEEMIEKEFNINIKPFAVERVKKIRDYAFVHFSNREDAV
 EAMKALNGKVLGSPIEVTLAKPVDKDSYVRYTRGTGGRGTMQLQGEYTYSLGQVYDPTTTYLGAPVFYAP
 QTYAAIPSLHFPATKGHLNRAIIRAPSVRGAAGVVRGLGGRGYLAYTGLGRGYQVKGDKREDKLYDILPG
 MELTPMNPVTLKPOGIKLAPOQILEEICQKNNWGPVYQLHSAIGDQDQRLFLYKITIPALASQNPATHPF
 TPPKLSAFVDEAKTYAAEYTLQTLGIPTDGGDMATAAAAAATAFPGYAVPNATAPVSAQLKQAVTLGQ
 DLAAAYTTYEVYPTFAVTARGDGYGTF

TRTRPLEQKLISEEDLAANDILDYKDDDDKV

Chromatograms:

https://cdn.origene.com/chromatograms/mk8068_e01.zip

Restriction Sites: SgfI-MluI

Cloning Scheme:



ACCN: NM_014576

ORF Size: 1758 bp

OTI Disclaimer: The molecular sequence of this clone aligns with the gene accession number as a point of reference only. However, individual transcript sequences of the same gene can differ through naturally occurring variations (e.g. polymorphisms), each with its own valid existence. This clone is substantially in agreement with the reference, but a complete review of all prevailing variants is recommended prior to use. [More info](#)

OTI Annotation: This clone was engineered to express the complete ORF with an expression tag. Expression varies depending on the nature of the gene.

Components: The ORF clone is ion-exchange column purified and shipped in a 2D barcoded Matrix tube containing 10ug of transfection-ready, dried plasmid DNA (reconstitute with 100 ul of water).

- Reconstitution Method:
1. Centrifuge at 5,000xg for 5min.
 2. Carefully open the tube and add 100ul of sterile water to dissolve the DNA.
 3. Close the tube and incubate for 10 minutes at room temperature.
 4. Briefly vortex the tube and then do a quick spin (less than 5000xg) to concentrate the liquid at the bottom.
 5. Store the suspended plasmid at -20°C. The DNA is stable for at least one year from date of shipping when stored at -20°C.

RefSeq: [NM_014576.4](#)

RefSeq Size: 2128 bp

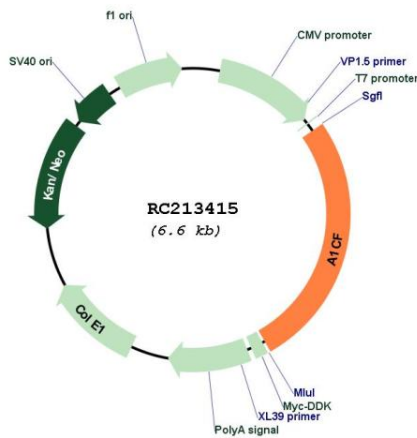
RefSeq ORF: 1761 bp

Locus ID: 29974

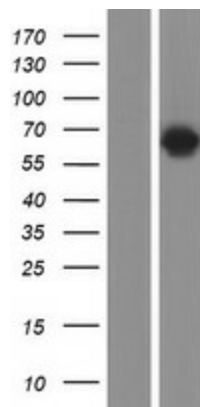
UniProt ID: [Q9NQ94](#)
 Cytogenetics: 10q11.23
 MW: 64.1 kDa

Gene Summary: Mammalian apolipoprotein B mRNA undergoes site-specific C to U deamination, which is mediated by a multi-component enzyme complex containing a minimal core composed of APOBEC-1 and a complementation factor encoded by this gene. The gene product has three non-identical RNA recognition motifs and belongs to the hnRNP R family of RNA-binding proteins. It has been proposed that this complementation factor functions as an RNA-binding subunit and docks APOBEC-1 to deaminate the upstream cytidine. Studies suggest that the protein may also be involved in other RNA editing or RNA processing events. Several transcript variants encoding a few different isoforms have been found for this gene. [provided by RefSeq, Nov 2010]

Product images:



Circular map for RC213415



Western blot validation of overexpression lysate (Cat# [LY415195]) using anti-DDK antibody (Cat# [TA50011-100]). Left: Cell lysates from untransfected HEK293T cells; Right: Cell lysates from HEK293T cells transfected with RC213415 using transfection reagent MegaTran 2.0 (Cat# [TT210002]).