

## Product datasheet for **RC213406**

### **TAGAP (NM\_138810) Human Tagged ORF Clone**

#### Product data:

Product Type:	Expression Plasmids
Product Name:	TAGAP (NM_138810) Human Tagged ORF Clone
Tag:	Myc-DDK
Symbol:	TAGAP
Synonyms:	ARHGAP47; FKSG15; IDDM21; TAGAP1
Mammalian Cell Selection:	Neomycin
Vector:	pCMV6-Entry (PS100001)
E. coli Selection:	Kanamycin (25 ug/mL)
ORF Nucleotide Sequence:	>RC213406 representing NM_138810 Red=Cloning site Blue=ORF Green=Tags(s)

TTTTGTAATACGACTCACTATAGGGCGCCGGGAATTCGTCGACTGGATCCGGTACCGAGGAGATCTGCC  
GCC**CGATCGCC**

ATGAAGCTGAGAAGCAGCCACAATGCTTCAAAAACACTAAACGCCAATAATATGGAGACTAATCGAAT  
GTCAATCAGAGGGTGATATCAAGGAACATCCCCTGTTGGCATCATGTGAGAGTGAAGACAGTATTTGCCA  
GCTCATTGAAGTTAAGAAGAGAAAGAAGGTGCTGTCTGGCCCTTCTCATGAGAAGGCTCTCCCCTGCA  
TCAGATTTTCTGGGGCTTTGGAGACAGACTTGAAAGCATCGCTATTTGATCAGCCCTTGCAATTATCT  
GCGGTGACAGTGACACTCCCCAGACCCATCCAGGACATTCTACTATTCTATGCCTTAAGGCCCTTC  
AACGGAAGGGATATTCAGGAGAGCAGCCAACGAGAAAGCCGTAAGGAGCTGAAGGAGGAGCTCAACTCT  
GGGGATGCGGTGGATCTGGAGAGGCTCCCCGTGCACCTCCTCGCTGTGGTCTTTAAGGACTTCTCAGAA  
GTATCCCCGGAAGCTACTTTCAAGCGACCTCTTTGAGGAGTGGATGGGTGCTCTGGAGATGCAGGACGA  
GGAGGACAGAAATCGAGGCCCTGAAACAGGTTGCAGATAAGCTCCCCGGCCCAACCTCCTGCTACTCAAG  
CACTTGGTCTATGTGCTGCACCTCATCAGCAAGAACTCTGAGGTGAACAGGATGGACTCCAGCAATCTGG  
CCATCTGCATTGGACCAACATGCTCACCTGGAGAATGACCAGAGCCTGTCATTTGAAGCCCAGAAGGA  
CCTGAACAACAAGTTTGTCTGCTTAC

**ACGCGT**ACGCGGCCGCTCGAGCAGAAACTCATCTCAGAAGAGGATCTGGCAGCAAATGATATCCTGGATT  
ACAAGGATGACGACGATAAGGTTTAA



**Protein Sequence:** >RC213406 representing NM\_138810  
 Red=Cloning site Green=Tags(s)

MKLRSSHNASKTLNANNMETLIECQSEGDIKEHPLLASCESEDSICQLIEVKRKKVLSWPFLMRRLSPA  
 SDFSGALETDLKASLFDQPLSIIICGSDTLPRPIQDILTILCLKGPSTEGIFRRAANEKARKELKEELNS  
 GDAVDLERLPVHLLAVVFKDFLRSIPRKLSSDLFEEWMGALEMQDEEDRIEALKQVADKLPRLNLLLLK  
 HLVYVHLHLSKNSEVNRMDSSNLAICIGPNMLTLENDQSLSFEAQKDLNKNVCSAY

TRTRPLEQKLISEEDLAANDILDYKDDDDKV

**Chromatograms:** [https://cdn.origene.com/chromatograms/mk8023\\_h10.zip](https://cdn.origene.com/chromatograms/mk8023_h10.zip)

**Restriction Sites:** SgfI-MluI

**Cloning Scheme:**

Cloning sites used for ORF Shuttling:



\* The last codon before the Stop codon of the ORF

**ACCN:** NM\_138810

**ORF Size:** 798 bp

**OTI Disclaimer:** The molecular sequence of this clone aligns with the gene accession number as a point of reference only. However, individual transcript sequences of the same gene can differ through naturally occurring variations (e.g. polymorphisms), each with its own valid existence. This clone is substantially in agreement with the reference, but a complete review of all prevailing variants is recommended prior to use. [More info](#)

**OTI Annotation:** This clone was engineered to express the complete ORF with an expression tag. Expression varies depending on the nature of the gene.

**Components:** The ORF clone is ion-exchange column purified and shipped in a 2D barcoded Matrix tube containing 10ug of transfection-ready, dried plasmid DNA (reconstitute with 100 ul of water).

**Reconstitution Method:**

1. Centrifuge at 5,000xg for 5min.
2. Carefully open the tube and add 100ul of sterile water to dissolve the DNA.
3. Close the tube and incubate for 10 minutes at room temperature.
4. Briefly vortex the tube and then do a quick spin (less than 5000xg) to concentrate the liquid at the bottom.
5. Store the suspended plasmid at -20°C. The DNA is stable for at least one year from date of shipping when stored at -20°C.

**RefSeq:** [NM\\_138810.4](#)

**RefSeq Size:** 1344 bp

**RefSeq ORF:** 801 bp

**Locus ID:** 117289

**UniProt ID:** [Q8N103](#)

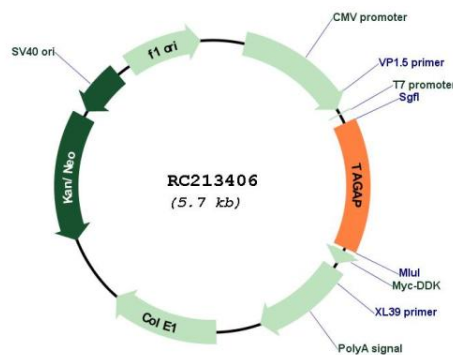
**Cytogenetics:** 6q25.3

**Domains:** RhoGAP

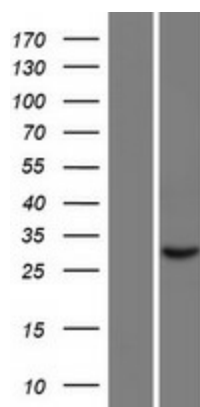
**MW:** 29.8 kDa

**Gene Summary:** This gene encodes a member of the Rho GTPase-activator protein superfamily. The encoded protein may function as a Rho GTPase-activating protein. Alterations in this gene may be associated with several diseases, including rheumatoid arthritis, celiac disease, and multiple sclerosis. Alternate splicing results in multiple transcript variants encoding distinct isoforms. [provided by RefSeq, Jul 2013]

### Product images:



Circular map for RC213406



Western blot validation of overexpression lysate (Cat# [LY408495]) using anti-DDK antibody (Cat# [TA50011-100]). Left: Cell lysates from untransfected HEK293T cells; Right: Cell lysates from HEK293T cells transfected with RC213406 using transfection reagent MegaTran 2.0 (Cat# [TT210002]).