

## Product datasheet for **RC213399**

### Zonula occludens protein 3 (TJP3) (NM\_014428) Human Tagged ORF Clone

#### Product data:

Product Type:	Expression Plasmids
Product Name:	Zonula occludens protein 3 (TJP3) (NM_014428) Human Tagged ORF Clone
Tag:	Myc-DDK
Symbol:	Zonula occludens protein 3
Synonyms:	ZO-3; ZO3
Mammalian Cell Selection:	Neomycin
Vector:	pCMV6-Entry (PS100001)
E. coli Selection:	Kanamycin (25 ug/mL)



[View online »](#)

**ORF Nucleotide  
Sequence:**

>RC213399 representing NM\_014428  
 Red=Cloning site Blue=ORF Green=Tags(s)

TTTTGTAATACGACTCACTATAGGGCGGCCGGGAATTCGTCGACTGGATCCGGTACCGAGGAGATCTGCC  
 GCC**CGGATCGCC**

ATGAACCTGTGTGGCCTCATGCCATCTTCCCCGCTCCCCTCGACCAGGTGGCTGACATGGAGGAGCTGA  
 CCATCTGGGAACAGCACACGGCCACACTGTCCAAGGACCCCGCCGGGGCTTTGGCATTGCGATCTCTGG  
 AGGCCGAGACCGCCCGTGGATCCATGGTTGTATCTGACGTGGTACCTGGAGGGCCGGCGAGGGCAGG  
 CTACAGACAGGCGACCACATCGTCATGGTGAACGGGGTTTCCATGGAGAATGCCACCTCCGCGTTTGCCA  
 TTCAGATACTCAAGACCTGCACCAAGATGGCCAACATCACAGTGAACCGTCCCGGAGGATCCACCTGCC  
 CGCCACCAAGCCAGCCCTCCAGCCAGGGCGCCAGGACTCGGATGAAGACGATGGGCCCCAGCGGGTG  
 GAGGAGGTGGACCAGGGCCGGGGCTATGACGGCGACTCATCCAGTGGCTCCGGCCCTCTGGGACGAGC  
 GCTCCCGCCGGCCGAGGCTGGTCGCCGGGGCCGGCCGGCAGCCATGGCGTAGGAGCCAGGTGGTGG  
 CTCTGAGGCCAACGGGCTGGCCCTGGTGTCCGGCTTTAAGCGGCTGCCACGGCAGGACGTGCAGATGAAG  
 CCTGTGAAGTCAGTGTGGTGAAGAGGAGAGACAGCGAAGAGTTGGCGTCAAGCTGGGCAGTCAGATCT  
 TCATCAAGCACATTACAGATTCGGGCTGGCTGCCCGGACCCGTGGGCTGCAGGAAGGAGATCTCATTCT  
 ACAGATCAACGGGGTGTCTAGCCAGAACCTGTCACTGAACGACACCCGGCGACTGATTGAGAAGTCAGAA  
 GGAAGCTAAGCCTGCTGGTGTGAGAGATCGTGGGCAGTTTCTGGTGAACATCCGCTGCTGTCACTG  
 ACAGCGACAGCTCGCATTGGAGGAAGGCGTGACCATGGCTGATGAGATGTCCTCTCCCCCTGCAGACAT  
 CTCGGACCTCGCTCGGAGCTATCGCAGGACACCACATCCACATCCACCACACCCCGGCATGCTCAG  
 CGGACCCCGAGGCCAGCCAGACCGACTCTCCCGTGGAGAGTCCCGGCTTCGGCGGGAAGTTTCAGTAG  
 ATTCAGAACCATCTCGGAACAGATGAGCAACGGTCAGAGTTGCCAGGGAAAGCAGCATGACATCTA  
 CAGAGTGGCCAGCAGTCAGAGCATGGAGGATCGTGGGTACAGCCCGACACGCGTGTGGTCCGCTTCCTC  
 AAGGGCAAGAGCATCGGGCTGCGGCTGGCAGGGGCAATGACGTGGGCATCTTCGTGTCCGGGGTGCAGG  
 CGGGCAGCCCGCCGACGGGCGAGGGCATCCAGGAGGGAGATCAGATTCTGCAGGTGAATGACGTGCCATT  
 CCAGAACCTGACACGGGAGGAGGAGTGCAGTTCTGCTGGGGCTGCCACCAGGCGAGGAGATGGAGCTG  
 GTGACGCAGAGGAAGCAGGACATTTTCTGGAAAATGGTGCAGTCCCGCTGGGTGACTCCTTCTACATCC  
 GCACTCACTTTGAGCTGGAGCCAGTCCACCGTCTGGCCTGGGCTTACCCGTGGCGACGTCTTCCACGT  
 GCTGGACACGCTGCACCCCGCCCGGGCAGGCCACGCACGAGGAGGCCACTGGCTGGCGGTGCGCATG  
 GGTGCTGACCTGCGGGAGCAAGAGCGGGGCATCATTCCCAACCAGAGCAGGGCGGAGCAGCTGGCCAGCC  
 TGGAAAGCTGCCAGAGGGCCGTGGGAGTCGGGCCCGGCTCCTCCCGGGCTCCAATGCTCCGGCCGAGTT  
 CTGGCGGCTGCGGGTCTTCGTGAGGAGCCAAGAAGACCACTCAGCGGAGCCGTGAGGACCTCTCAGCT  
 CTGACCCGACAGGGCCGCTACCCGCCCTACGAACGAGTGGTGTGCGAGAAGCCAGTTTCAAGCGCCCGG  
 TAGTGATCCTGGGACCCGTGGCCGACATTGCTATGCAGAAGTTGACTGCTGAGATGCCTGACCAGTTTGA  
 AATCGCAGAGACTGTGTCCAGGACCGACAGCCCTCCAAGATCATCAAATAGACACCGTGCAGGGTATT  
 GCAGAAAAAGACAAGCATGCGCTCCTGGATGTGACCCCTCCGCCATCGAGCGCCTCAACTATGTGCAGT  
 ACTACCCATTGTGGTCTTCTTCATCCCGAGAGCCGGCCGGCCCTCAAGGCACTGCGCCAGTGGCTGGC  
 GCCTGCCCTCCCGCCGACACCCGTCCCTCTACGCACAAGCCAGAAGCTGCGAAAACACAGCAGGCCAC  
 CTCTTACAGCCACCATCCCTCTGAATGGCACAGTGCACCTGGTACCAGGAGCTCAAGGCCATCATT  
 GAGAGCAGCAGACCGGCCATCTGACGGCGGAAGATCAGTGGATGGCTCCTTGGAGGACAACCTAGA  
 CCTCCCTCACCACGGCCTGGCCGACAGTCCGCTGACCTCAGCTGCGACAGCCGCGTTAACAGCGACTAC  
 GAGACGGACGGCGAGGGCGGCGGTACACGGATGGCGAGGGTACACAGACGGCGAGGGGGGCCCTACA  
 CGGATGTGGATGATGAGCCCCGGCTCCAGCCCTGGCCCGGCTCCTCGGAGCCGTGCAGGCAGATGAGTC  
 CCAGAGCCCGAGGGATCGTGGGAGAATCTCGGCTCATCAGGGGGCCAGGTGGACAGCCGCCACCCCGAG  
 GGACAGTGGCGACAGGACAGCATGCGAACCTATGAACGGGAAGCCCTGAAGAAAAAGTTTATGCGAGTAC  
 ATGATGCGGAGTCTCCGATGAAGACGGCTATGACTGGGGTCCGGCCACTGACCTG

AG**CGGACCG**ACGCGTACGCGGCCGCTCGAGCAGAACTCATCTCAGAAGAGGATCTGGCAGCAAATGATATCC  
 TGGATTACAAGGATGACGACGATAAGGTTTAA

**Protein Sequence:** >RC213399 representing NM\_014428  
 Red=Cloning site Green=Tags(s)

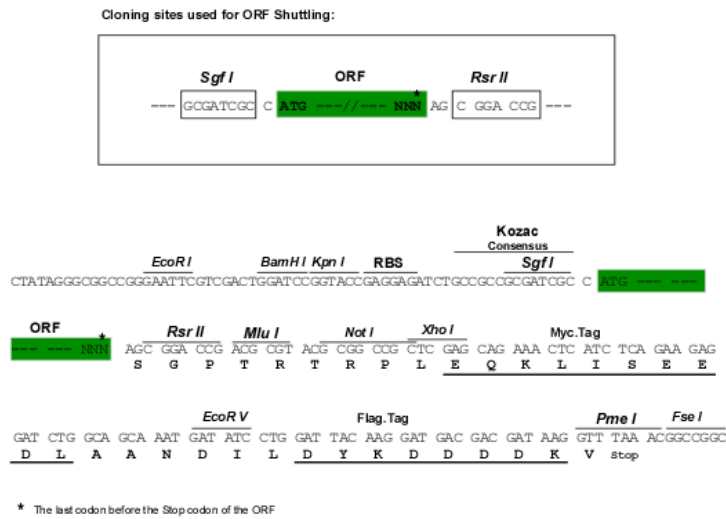
MNLCGLMPIFPAPLDQVADMEELTIWEQHTATLSKDPRRGFIAISGGRDRPGGSMVSDVVPGGPAEGR  
 LQTGDHIVMNGVSMENATSAFAIQILKCTKMANITVKRPRRIHLPATKASPSSPGRQSDSEDDGPQRV  
 EEVDQGRGYDGDSSSGSRSWDERSRRPRPGRRGRAGSHGRRSPGGSEANGLALVSGFKRLPRQDVQMK  
 PVKSVLVKRRDSEEFVGLKLSQIFIKHITDGLAARHRLQEGDLILQINGVSSQNLSLNDRRLIEKSE  
 GKLSLLVLRDRGQFLVNIPPAVSDSSPLEEGVTMADEMSSPPADISDLASELSQAPPSHIPPPRHAQ  
 RSPEASQTDSPVESPRLRRESSVDSRTISEPDEQRSELPRESSYDIYRVPSSQSMEDRGYSPDTRVVRFL  
 KGKSIGLRLAGGNDVGFVSGVQAGSPADGQGIQEGDQILQVNDVPFQNLTREEAVQFLLGLPPGEEEMEL  
 VTQRKQDIFWKMVQSRVGDsfYIRTHFELEPSPSGLGFTRGDVFHVLDTLHPGPGQSHARGHWAARM  
 GRDLREQERGIIPNQSRAEQLASLEAAQRAVGVPSSAGSNARAEFWRLRGLRRGAKKTTQRSRELD SA  
 LTRQGRYPYERVVLRASFKRPVVILGPVADIAMQKLAEMPQDFEIAETVSRDPSKIIKLDTVRVI  
 AEKDKHALLDVTPSAIERLNYVQYPIVVFIPESRPALKALRQLAPASRRSTRRLYAQAQKLRKHSSH  
 LFTATIPLNGTSDTWYQELKAIIREQTRPIWTAEDQLDGSLEDNLDLPHHGLADSSADLSCDSRVNSDY  
 ETDGEGGAYTDGEGYTDGEGGPYTDVDEPPAPALARSSEPVADESQSPRDRGRISAHQGAQVDSRHPQ  
 GQWRQDSMRTYEREALKKKFMRVHDAESSEDEDGYDWGPATDL

SGPTRRRL**EQKLISEEDLAANDILDYKDDDDK**V

**Chromatograms:** [https://cdn.origene.com/chromatograms/mk8023\\_h12.zip](https://cdn.origene.com/chromatograms/mk8023_h12.zip)

**Restriction Sites:** SgfI-RsrII

**Cloning Scheme:**

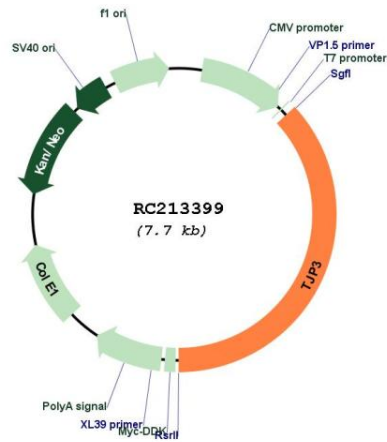


**ACCN:** NM\_014428

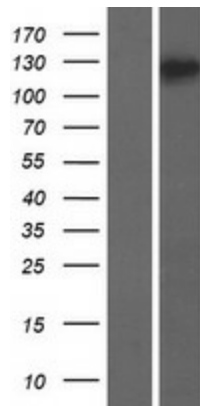
**ORF Size:** 2856 bp

<b>OTI Disclaimer:</b>	The molecular sequence of this clone aligns with the gene accession number as a point of reference only. However, individual transcript sequences of the same gene can differ through naturally occurring variations (e.g. polymorphisms), each with its own valid existence. This clone is substantially in agreement with the reference, but a complete review of all prevailing variants is recommended prior to use. <a href="#">More info</a>
<b>OTI Annotation:</b>	This clone was engineered to express the complete ORF with an expression tag. Expression varies depending on the nature of the gene.
<b>Components:</b>	The ORF clone is ion-exchange column purified and shipped in a 2D barcoded Matrix tube containing 10ug of transfection-ready, dried plasmid DNA (reconstitute with 100 ul of water).
<b>Reconstitution Method:</b>	<ol style="list-style-type: none"><li>1. Centrifuge at 5,000xg for 5min.</li><li>2. Carefully open the tube and add 100ul of sterile water to dissolve the DNA.</li><li>3. Close the tube and incubate for 10 minutes at room temperature.</li><li>4. Briefly vortex the tube and then do a quick spin (less than 5000xg) to concentrate the liquid at the bottom.</li><li>5. Store the suspended plasmid at -20°C. The DNA is stable for at least one year from date of shipping when stored at -20°C.</li></ol>
<b>RefSeq:</b>	<a href="#">NM_014428.1</a> , <a href="#">NP_055243.1</a>
<b>RefSeq Size:</b>	2859 bp
<b>RefSeq ORF:</b>	2858 bp
<b>Locus ID:</b>	27134
<b>Cytogenetics:</b>	19p13.3
<b>Protein Pathways:</b>	Tight junction
<b>MW:</b>	104.6 kDa
<b>Gene Summary:</b>	The protein encoded by this gene is a member of the membrane-associated guanylate kinase-like (MAGUK) protein family which is characterized by members having multiple PDZ domains, a single SH3 domain, and a single guanylate kinase-like (GUK)-domain. In addition, members of the zonula occludens protein subfamily have an acidic domain, a basic arginine-rich region, and a proline-rich domain. The protein encoded by this gene plays a role in the linkage between the actin cytoskeleton and tight-junctions and also sequesters cyclin D1 at tight junctions during mitosis. Alternative splicing results in multiple transcript variants encoding distinct isoforms. This gene has a partial pseudogene on chromosome 1. [provided by RefSeq, May 2012]

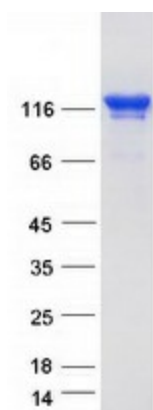
Product images:



Circular map for RC213399



Western blot validation of overexpression lysate (Cat# [LY415277]) using anti-DDK antibody (Cat# [TA50011-100]). Left: Cell lysates from untransfected HEK293T cells; Right: Cell lysates from HEK293T cells transfected with RC213399 using transfection reagent MegaTran 2.0 (Cat# [TT210002]).



Coomassie blue staining of purified TJP3 protein (Cat# [TP313399]). The protein was produced from HEK293T cells transfected with TJP3 cDNA clone (Cat# RC213399) using MegaTran 2.0 (Cat# [TT210002]).