

Product datasheet for **RC213377**

IL17RC (NM_153460) Human Tagged ORF Clone

Product data:

Product Type:	Expression Plasmids
Product Name:	IL17RC (NM_153460) Human Tagged ORF Clone
Tag:	Myc-DDK
Symbol:	IL17RC
Synonyms:	CANDF9; IL17-RL; IL17RL
Mammalian Cell Selection:	Neomycin
Vector:	pCMV6-Entry (PS100001)
E. coli Selection:	Kanamycin (25 ug/mL)



[View online »](#)

ORF Nucleotide Sequence:

>RC213377 representing NM_153460
 Red=Cloning site Blue=ORF Green=Tags(s)

TTTTGTAATACGACTCACTATAGGGCGGCCGGAATTCGTCGACTGGATCCGGTACCGAGGAGATCTGCC
 GCC**GCGATCGCC**

ATGCCTGTGCCCTGGTTCTTGCTGTCTTGGCACTGGGCCGAAGCCAGTGGTCCTTTCTCTGGAGAGGC
 TTGTGGGGCCTCAGGACGCTACCCACTGCTCTCCGGGCCTCTCCTGCCGCTCTGGGACAGTGACATACT
 CTGCCTGCCTGGGGACATCGTGCCTGCTCCGGGCCCGTCTGGCGCCTACGCACCTGCAGACAGAGCTG
 GTGCTGAGGTGCCAGAAGGAGACCGACTGTGACCTCTGTCTGCGTGTGGCTGTCCACTTGGCCGTGCATG
 GGCCTGGGAAGAGCCTGAAGATGAGGAAAAGTTGGAGGAGCAGCTGACTCAGGGGTGGAGGAGCCTAG
 GAATGCCTCTCTCAGGCCAAGTCGTGCTCTCCTTCCAGGCCTACCCTACTGCCCGCTGCGTCTGCTG
 GAGGTGCAAGTGCCTGCTGCCCTGTGCAGTTTGGTCAGTCTGTGGGCTCTGTGGTATATGACTGCTTCG
 AGGCTGCCCTAGGAGTGAGGTACGAATCTGGTCTATACTCAGCCAGGTACGAGAAGGAACTCAACCA
 CACACAGCAGCTGCCTGACTGCAGGGGGCTCGAAGTCTGGAACAGCATCCCGAGCTGCTGGGCCCTGCC
 TGCTCAACGTGTCAGCAGATGGTGACAACGTGCATCTGGTTCTGAATGTCTCTGAGGAGCAGCACTTCG
 GCCTCTCCCTGTACTGGAATCAGGTCCAGGGCCCCCAAAACCCCGTGGCACAACCACTGACTGGACC
 GCAGATCATTACCTTGAACCACACAGACCTGGTCCCTGCCTCTGTATTCAAGGTGTGGCCTCTGGAACCT
 GACTCCGTTAGGACGAACATCTGCCCTTCCAGGGAGGACCCCGCGCACACCAGAACCTCTGGCAAGCCG
 CCCGACTGCGACTGTGACCCTGCAGAGCTGGCTGCTGGACGCACCGTCTGCTGCCCGCAGAAGCGGC
 ACTGTGCTGGCGGGCTCCGGTGGGGACCCCTGCCAGCCACTGGTCCCACCGCTTTCCTGGGAGAAGCTC
 ACTGTGGACAAGTCTCGAGTTCCTTGTGCTGAAAGGCCACCCTAACCTCTGTGTTCAAGTGAACAGCT
 CGGAGAAGCTGCAGCTGCAGGAGTCTTGTGGCTGACTCCCTGGGGCCTCTCAAAGACGATGTGCTACT
 GTTGGAGACACGAGGCCCCAGGACAACAGATCCCTCTGTGCCTTGAACCCAGTGGCTGTACTTACTA
 CCCAGCAAAGCCTCCACGAGGGCAGCTCGCCTTGGAGAGTACTTACTACAAGACCTGCAGTCAGGCCAGT
 GTCTGCAGCTATGGGACGATGACTTGGGAGCGCTATGGGCCTGCCCATGGACAAATACATCCACAAGCG
 CTGGGCCCTCGTGTGGCTGGCCTGCCTACTCTTGGCCGCTGCGCTTTCCTCATCCTCTCTCAAAAAG
 GATCACGCGAAAGGGTGGCTGAGGCTCTTGAACAGGACGTCCGCTCGGGGGCGGCCGACGGGGCCGCG
 CGGCTCTGCTCCTACTCAGCCGATGACTCGGGTTTCGAGCGCCTGGTGGGCGCCCTGGCGTCGGCCCT
 GTGCCAGCTGCCGCTGCGCGTGGCCGTAGACCTGTGGAGCCGTCGTGAAGTGAAGCGCAGGGGCCCGTG
 GCTTGGTTTACGCGCAGCGGCCAGACCCTGCAGGAGGGCGGCGTGGTGGTCTTGTCTTCTCTCCCG
 GTGCGGTGGCGCTGTGCAGCGAGTGGCTACAGGATGGGGTGTCCGGGCCCGGGGCGCACGGCCCGCACGA
 CGCCTTCCGCGCCTCGCTCAGCTGCGTGTGCCGACTTCTTGCAGGGCCGGGCGCCCGGACGACTACGTG
 GGGCCTGCTTCGACAGGCTGCTCCACCCGGACGCCGTACCCGCCCTTTCCGACCCGTGCCCGTCTTCA
 CACTGCCCTCCAACTGCCAGACTTCTGGGGCCCTGCAGCAGCCTCGCGCCCCGCGTTCGGGGCGGCT
 CCAAGAGAGAGCGGAGCAAGTGTCCCGGCCCTTCCAGCCAGCCCTGGATAGCTACTTCCATCCCCGGGG
 ACTCCCGCGCCGGGACGCGGGGTGGGACCAGGGGCGGGACCTGGGGCGGGGACGGGACT

ACGCGTACGCGGCCGCTCGAGCAGAACTCATCTCAGAAGAGGATCTGGCAGCAAATGATATCCTGGATT
 ACAAGGATGACGACGATAAGGTTTAA

Protein Sequence: >RC213377 representing NM_153460
Red=Cloning site Green=Tags(s)

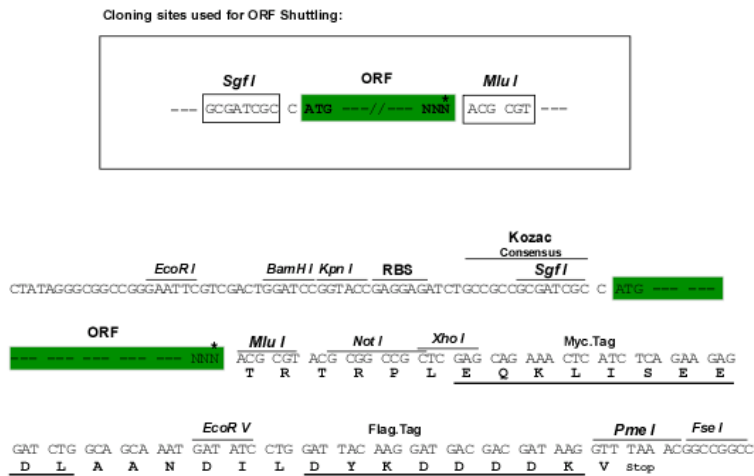
MPVPWFLLSLALGRSPVVL SLERLVGPQDATHCSPGL SCRLWSDILCLPGDIVPAPGPVLAPTHLQTEL
 VLRCQKETDCDLCLRVAVHLAVHGHWEPEDEEKFGGAADSGVEEPRNASLQAQVLSFQAYPTARCVLL
 EVQVPAALVQFGQSVGSVVYDCFEAALGSEVRIWSYTPRYEKELNHTQQLPDCRGLLEVWNSIPSCWALP
 WLNVSADGDNVHLVLNVSEEQHFGLSL YWNQVQGPVKPRWHKNL TGPQIITL NHTDLVPCLCIQVWPLEP
 DSVRTNICPFREDPRAHQNLWQAARLRLTLQSWLLDAPCSLPAEAALCWRAPGGDPCQPLVPPLSWENV
 TVDKVLEFPLLKGPVNL CVQVNSSEKLQLQECLWADSLGPLKDDVLLLETRGPQDNRS LCALEPSGCTSL
 PSKASTRAARLGEYLLQDLQSGQCLQLWDDDLGALWACPMKYIHKRWALVWLACLLFAAALSLILLKK
 DHAKGWLRLKQDVRSGAAARGRAALLYSADDSGFERLVGALASALCQLPLRVAVDLWSRRELSAQGPV
 AWFHAQRRQTLQEGGVVLLFSPGAVALCSEWLQDGVSGPGAHGPHDAFRASLSCVLPDFLQGRAPGSYV
 GACFDRLHPDAVPALFRTVPVFTLPSQLPDFL GALQQPRAPRSGRLQERAEQVSRALQPALDSYFHPPG
 TPAPGRGVGPGAGPGAGDGT

TRTRPLEQKLI SEEDLAANDILDYKDDDDKV

Chromatograms: https://cdn.origene.com/chromatograms/ja1692_e01.zip

Restriction Sites: SgfI-MluI

Cloning Scheme:



* The last codon before the Stop codon of the ORF

ACCN: NM_153460

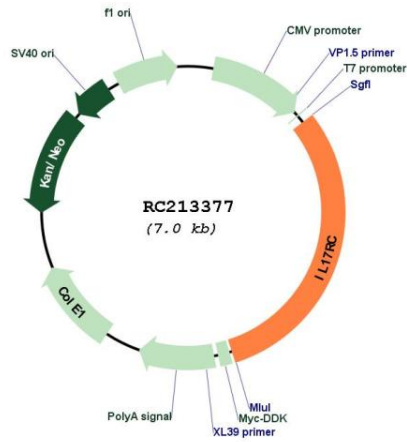
ORF Size: 2160 bp

OTI Disclaimer: The molecular sequence of this clone aligns with the gene accession number as a point of reference only. However, individual transcript sequences of the same gene can differ through naturally occurring variations (e.g. polymorphisms), each with its own valid existence. This clone is substantially in agreement with the reference, but a complete review of all prevailing variants is recommended prior to use. [More info](#)

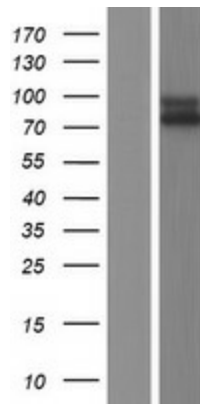
OTI Annotation: This clone was engineered to express the complete ORF with an expression tag. Expression varies depending on the nature of the gene.

Components:	The ORF clone is ion-exchange column purified and shipped in a 2D barcoded Matrix tube containing 10ug of transfection-ready, dried plasmid DNA (reconstitute with 100 ul of water).
Reconstitution Method:	<ol style="list-style-type: none">1. Centrifuge at 5,000xg for 5min.2. Carefully open the tube and add 100ul of sterile water to dissolve the DNA.3. Close the tube and incubate for 10 minutes at room temperature.4. Briefly vortex the tube and then do a quick spin (less than 5000xg) to concentrate the liquid at the bottom.5. Store the suspended plasmid at -20°C. The DNA is stable for at least one year from date of shipping when stored at -20°C.
RefSeq:	NM_153460.1 , NP_703190.1
RefSeq Size:	2478 bp
RefSeq ORF:	2163 bp
Locus ID:	84818
UniProt ID:	Q8NAC3
Cytogenetics:	3p25.3-p24.1
Protein Families:	Druggable Genome, Transmembrane
MW:	76.4 kDa
Gene Summary:	This gene encodes a single-pass type I membrane protein that shares similarity with the interleukin-17 receptor (IL-17RA). Unlike IL-17RA, which is predominantly expressed in hemopoietic cells, and binds with high affinity to only IL-17A, this protein is expressed in nonhemopoietic tissues, and binds both IL-17A and IL-17F with similar affinities. The proinflammatory cytokines, IL-17A and IL-17F, have been implicated in the progression of inflammatory and autoimmune diseases. Multiple alternatively spliced transcript variants encoding different isoforms have been detected for this gene, and it has been proposed that soluble, secreted proteins lacking transmembrane and intracellular domains may function as extracellular antagonists to cytokine signaling. [provided by RefSeq, Feb 2011]

Product images:



Circular map for RC213377



Western blot validation of overexpression lysate (Cat# [LY407040]) using anti-DDK antibody (Cat# [TA50011-100]). Left: Cell lysates from untransfected HEK293T cells; Right: Cell lysates from HEK293T cells transfected with RC213377 using transfection reagent MegaTran 2.0 (Cat# [TT210002]).