

Product datasheet for **RC213373**

CD168 (HMMR) (NM_012485) Human Tagged ORF Clone

Product data:

| | |
|---------------------------|---|
| Product Type: | Expression Plasmids |
| Product Name: | CD168 (HMMR) (NM_012485) Human Tagged ORF Clone |
| Tag: | Myc-DDK |
| Symbol: | CD168 |
| Synonyms: | CD168; IHABP; RHAMM |
| Mammalian Cell Selection: | Neomycin |
| Vector: | pCMV6-Entry (PS100001) |
| E. coli Selection: | Kanamycin (25 ug/mL) |



[View online »](#)

ORF Nucleotide Sequence:

>RC213373 representing NM_012485
 Red=Cloning site Blue=ORF Green=Tags(s)

TTTTGTAATACGACTCACTATAGGGCGGCCGGAATTCGTCGACTGGATCCGGTACCGAGGAGATCTGCC
 GCC**CGCATCGCC**

ATGTCCTTTCCTAAGCGCCCTTGAACGATTCAATGACCCTTCTGGTTGTGCACCATCTCCAGGTGCTT
 ATGATGTTAAACTTTAGAGTATTGAAAGGACCAGTATCCTTTCAGAAATCACAAAGATTTAAACAACA
 AAAAGAATCTAAACAAAATCTTAATGTTGACAAAGATACTACCTTGCCTGCTTCAGCTAGAAAAGTTAAG
 TCTTCGGAATCAAAGATTCGTGTTCTTCTACAGGAACGTGGTGCCAGGACAGGCGGATCCAGGATCTGG
 AAAGTGGTGGAAAAGATGGAAGCAAGGCTAAATGCTGCACTAAGGGAAAAACATCTCTCTGCAAA
 TAATGCTACACTGAAAAACAATTATTGAATTGACCAGGACTAATGAACTACTAAAATCTAAGTTTTCT
 GAAAATGGTAACCAAGAAGATTTGAGAATTCTAAGCTTGGAGTTGATGAACTTAGAAAACAAAAGAGAAA
 CAAAGATGAGGGGTATGATGGCTAAGCAAGAAGGCATGGAGATGAAGCTGCAGGTCACCCAAAGGAGTCT
 CGAAGAGTCTCAAGGGAAAATAGCCCACTGGAGGGAAAACCTGTTTCAATAGAGAAAAGAAAAGATTGAT
 GAAAAATCTGAAACAGAAAAACTCTTGAATACATCGAAGAAATTAGTTGTGCTTCAAGTCAAGTGGAAA
 AATACAAGCTAGATATTGCCAGTTAGAAGAAAATTTGAAAGAGAAGAATGATGAAATTTAAGCCTTAA
 GCAGTCTCTTGAGGAGAAATTGTTATATTATCTAAACAAGTAGAAGATCTAAATGTGAAATGTCAGCTG
 CTTGAAAAAGAAAAAGAACCATGTCAACAGGAATAGAGAACACAACGAAAAATCTAAATGCAGAGATGC
 AAACTTAAACAGAAAGTTTATTCTTGAACAACAGGAACGTGAAAAGCTTCAACAAAAGAAATTACAAAT
 TGATTCACCTTCTGCAACAAGAGAAAGAAATTATCTTCGAGTCTTCATCAGAAGCTCTGTTCTTTTCAAGAG
 GAAATGGCTAAAGAGAAGAATCTGTTTGAGGAAGAATTAAGCAAACTGGATGAGCTTGATAAATTAC
 AGCAAAAGGAGGAACAAGCTGAAAGGCTGGTCAAGCAATTGGAAGAGGAAGCAAAATCTAGAGCTGAAGA
 ATTAATAACTCCTAGAAGAAAAGCTGAAAGGGAAGGAGGCTGAACTGGAGAAAAGTAGTGCTGCTCATACC
 CAGGCCACCCTGCTTTTGCAGGAAAAGTATGACAGTATGGTGCAAAAGCCTTGAAGATGTTACTGCTCAAT
 TTGAAAGCTATAAAGCGTTAACAGCCAGTGAAGATAGAAGATCTTAAGCTGGAGAACTCATCATTACAGGA
 AAAAGCGGCCAAGGCTGGGAAAAATGCAGAGGATGTTGAGTATGATTTTGGCAACTGAGAGCTCAAAT
 CAAGAATATGTAAGGATGCTTCTAGATCTGCAGACCAAGTCAGCACTAAAGGAAACAGAAATTAAGAAA
 TCACAGTTTCTTTCTTCAAAAAATAACTGATTTGCAGAACCACTCAAGCAACAGGAGGAAGACTTTAG
 AAAACAGCTGGAAGATGAAGAAGGAAGAAAAGCTGAAAAAGAAAATACAACAGCAGAATTAAGTGAAGAA
 ATTAACAAGTGGCGTCTCCTCTATGAAGAACTATAAATAAAACAAAACCTTTTTCAGCTACAAGTATGATG
 CTTTTGAAGTAGAAAAACAGGCATTGTTGAATGAACATGGTGCAGCTCAGGAACAGCTAAATAAAAATAAG
 AGATTCATATGCTAAATATTGGGTCATCAGAATTTGAAACAAAAATCAAGCATGTTGTGAAGTTGAAA
 GATGAAAATAGCCAACCTCAAATCGGAAGTATCAAACTCCGCTGTGAGCTTGTAAAAAAAACAAAGTG
 AGCAAAACTTCAAGAGGAATTGAATAAAGTTCTAGGTATCAAACACTTTGATCCTTCAAAGGCTTTTCA
 TCATGAAAGTAAAGAAAATTTGCCCTGAAGACCCATTAAAAGAAGGCAATACAACTGTTACCGAGCT
 CCTATGGAGTGTCAAGAATCATGGAAG

ACGCGTACGCGGCCGCTCGAGCAGAACTCATCTCAGAAGAGGATCTGGCAGCAAATGATATCCTGGATT
 ACAAGGATGACGACGATAAGGTTTAA

Protein Sequence: >RC213373 representing NM_012485
Red=Cloning site Green=Tags(s)

MSFPKAPLKRFPNPSGAPSPGAYDVKTLKQKPVFVQKSRFRKQKQESKQNLNVDKDTLTPASARKVKV
SSESKIRVLLQERGAQDRRIQDLETELEKMEARLNAALREKTSLANNATLEKQLIELTRTNELLKSKFS
ENGNQKNLRLSLELMKLNRKRETKMRGMMAKQEGMEMKLQVTQRSL EESQGKIAQLEGKLVSEIEKID
EKSETEKLL EYIEEISCASDQVEKYKLDIAQLEENLKEKNDEILSLKQSL EENIVILSKQVEDLNVKQCL
LEKEKEDHVNRNREHNENLNAEMQNKKQFILEQQEREK LQQEKELQIDSL LQQEKELSSSLHQKLC SFQE
EMAKEKNLFEELKQTLDELDKLQKKEQAERLVKQLEEEAKSRAEELK LLEEK LKGEAELEKSSAAHT
QATLLQLQEKYDSMVQSLEDVTAQFESYKAL TASEIEDLKL ESSLQEKAAKAGKNAEDVQH I LATESSN
QEYVRMLLDLQTKSALKETEIKEITVSFLQKITD LQNQLKQ EEDFRKQLEDEEGRKA EKENTTAEL TEE
INKWRLLYEELYNKTPFQLQLDAFEVEKQALL NEHGAAQEQLNKIRDSYAKLLGHQNLKQKIKHVVKL K
DENSQLKSEVSKLRCQLAKKKQSETKLQEELNKVLGIKHFDPSKAFHHESKENFALKTPLKEGNTNCYRA
PMECQESWK

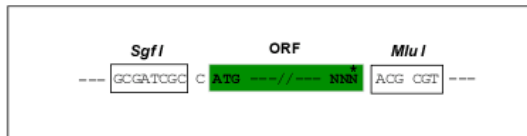
TRTRPLEQKLI SEEDLAANDILDYKDDDDKV

Chromatograms: https://cdn.origene.com/chromatograms/mg2717_b07.zip

Restriction Sites: Sgfl-MluI

Cloning Scheme:

Cloning sites used for ORF Shutting:



A detailed map of the gene construct. At the top, it shows restriction sites: EcoRI, BamHI, KpnI, RBS, Kozac Consensus, and SgfI. Below is a green bar representing the ORF. Below the ORF, it shows the MluI site and the protein sequence: T R T R P L E Q K L I S E E. Further down, it shows Myc.Tag, NotI, XhoI, EcoRV, Flag.Tag, PmeI, and FseI. At the bottom, it shows the amino acid sequence: D L A A N D I L D Y K D D D K V Stop.

* The last codon before the Stop codon of the ORF

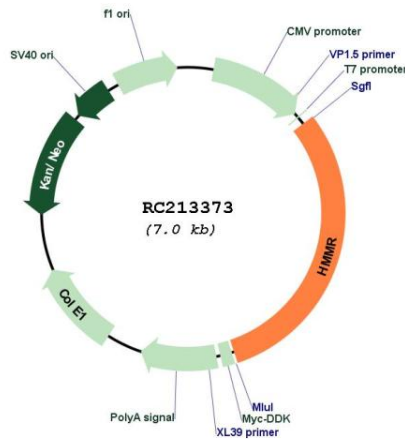
ACCN: NM_012485

ORF Size: 2127 bp

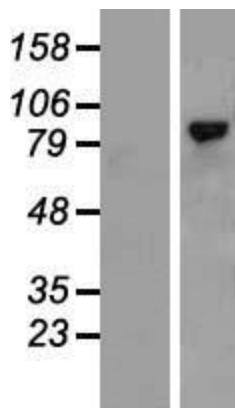
| | |
|-------------------------------|--|
| OTI Disclaimer: | <p>Due to the inherent nature of this plasmid, standard methods to replicate additional amounts of DNA in E. coli are highly likely to result in mutations and/or rearrangements. Therefore, OriGene does not guarantee the capability to replicate this plasmid DNA. Additional amounts of DNA can be purchased from OriGene with batch-specific, full-sequence verification at a reduced cost. Please contact our customer care team at custsupport@origene.com or by calling 301.340.3188 option 3 for pricing and delivery.</p> <p>The molecular sequence of this clone aligns with the gene accession number as a point of reference only. However, individual transcript sequences of the same gene can differ through naturally occurring variations (e.g. polymorphisms), each with its own valid existence. This clone is substantially in agreement with the reference, but a complete review of all prevailing variants is recommended prior to use. More info</p> |
| OTI Annotation: | This clone was engineered to express the complete ORF with an expression tag. Expression varies depending on the nature of the gene. |
| Components: | The ORF clone is ion-exchange column purified and shipped in a 2D barcoded Matrix tube containing 10ug of transfection-ready, dried plasmid DNA (reconstitute with 100 ul of water). |
| Reconstitution Method: | <ol style="list-style-type: none"> 1. Centrifuge at 5,000xg for 5min. 2. Carefully open the tube and add 100ul of sterile water to dissolve the DNA. 3. Close the tube and incubate for 10 minutes at room temperature. 4. Briefly vortex the tube and then do a quick spin (less than 5000xg) to concentrate the liquid at the bottom. 5. Store the suspended plasmid at -20°C. The DNA is stable for at least one year from date of shipping when stored at -20°C. |
| Note: | Plasmids are not sterile. For experiments where strict sterility is required, filtration with 0.22um filter is required. |
| RefSeq: | NM_012485.3 |
| RefSeq Size: | 2957 bp |
| RefSeq ORF: | 2130 bp |
| Locus ID: | 3161 |
| UniProt ID: | O75330 |
| Cytogenetics: | 5q34 |
| Protein Families: | Druggable Genome, Stem cell - Pluripotency |
| Protein Pathways: | ECM-receptor interaction |
| MW: | 82.1 kDa |

Gene Summary:

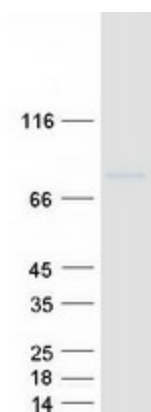
The protein encoded by this gene is involved in cell motility. It is expressed in breast tissue and together with other proteins, it forms a complex with BRCA1 and BRCA2, thus is potentially associated with higher risk of breast cancer. Alternatively spliced transcript variants encoding different isoforms have been noted for this gene. [provided by RefSeq, Dec 2008]

Product images:


Circular map for RC213373



Western blot validation of overexpression lysate (Cat# [LY415729]) using anti-DDK antibody (Cat# [TA50011-100]). Left: Cell lysates from untransfected HEK293T cells; Right: Cell lysates from HEK293T cells transfected with RC213373 using transfection reagent MegaTran 2.0 (Cat# [TT210002]).



Coomassie blue staining of purified HMMR protein (Cat# [TP313373]). The protein was produced from HEK293T cells transfected with HMMR cDNA clone (Cat# RC213373) using MegaTran 2.0 (Cat# [TT210002]).