

Product datasheet for **RC213369**

HNT (NTM) (NM_001048209) Human Tagged ORF Clone

Product data:

Product Type:	Expression Plasmids
Product Name:	HNT (NTM) (NM_001048209) Human Tagged ORF Clone
Tag:	Myc-DDK
Symbol:	HNT
Synonyms:	CEPU-1; HNT; IGLON2; NTRI
Mammalian Cell Selection:	Neomycin
Vector:	pCMV6-Entry (PS100001)
E. coli Selection:	Kanamycin (25 ug/mL)
ORF Nucleotide Sequence:	>RC213369 representing NM_001048209 Red=Cloning site Blue=ORF Green=Tags(s)

TTTTGTAATACGACTCACTATAGGGCGGCCGGAATTCGTCGACTGGATCCGGTACCGAGGAGATCTGCC
GCC**CGATCGCC**

ATGGGGTCTGTGGGTACCTGTTCTGCCCTGGAAGTGCCTCGTGGTCTGTCTCTCAGGCTGCTGTTCC
TTGTACCCACAGGAGTGCCCGTGCAGCGGAGATGCCACCTTCCCAAAGCTATGGACAACGTGACGGT
CCGGCAGGGGAGAGCGCCACCCTCAGGTGCACTATTGACAACCGGGTCACCCGGTGGCTGGCTAAAC
CGCAGCACCATCCTCTATGCTGGGAATGACAAGTGGTGCCTGGATCCTCGCGTGGTCTTCTGAGCAACA
CCCAAACGCAGTACAGCATCGAGATCCAGAACGTGGATGTGTATGACGAGGGCCCTTACACCTGCTCGGT
GCAGACAGACAACCACCCAAAGACCTCTAGGGTCCACCTCATTGTGCAAGTATCTCCAAAATTGTAGAG
ATTTCTTCAGATATCTCCATTAATGAAGGGAACAATATTAGCCTCACCTGCATAGCAACTGGTAGACCAG
AGCCTACGGTTACTTGGAGACACATCTCTCCAAAGCGGTTGGCTTTGTGAGTGAAGACGAATACTTGGAA
AATTCAGGGCATCACCCGGGAGCAGTACGGGGACTACGAGTGCAGTGCCTCCAATGACGTGGCCGCGCCC
GTGGTACGGAGAGTAAAGGTCACCGTGAACATCCACCATACATTTGAGAAGCCAAGGGTACAGGTGTCC
CCGTGGGACAAAAGGGGACACTGCAGTGTGAAGCCTCAGCAGTCCCCTCAGCAGAATTCAGTGGTACAA
GGATGACAAAAGACTGATTGAAGGAAAGAAAGGGGTGAAAGTGGAAAACAGACCTTCTCTCAAATCTC
ATCTTTCAATGTCTCTGAACATGACTATGGAACTACACTTGGTGGCCTCCAACAAGTGGGCCACA
CCAATGCCAGCATCATGCTATTTGGTCCAGGCGCCGTACGAGGTGAGCAACGGCACGTGAGGAGGGC
AGGCTGCGTCTGGCTGCTGCCTCTTCTGGTCTTGACCTGCTTCTCAAATTT

ACGCGTACGCGGCCGCTCGAGCAGAACTCATCTCAGAAGAGGATCTGGCAGCAAATGATATCCTGGATT
ACAAGGATGACGACGATAAGGTTTAA



[View online »](#)

Protein Sequence: >RC213369 representing NM_001048209
Red=Cloning site Green=Tags(s)

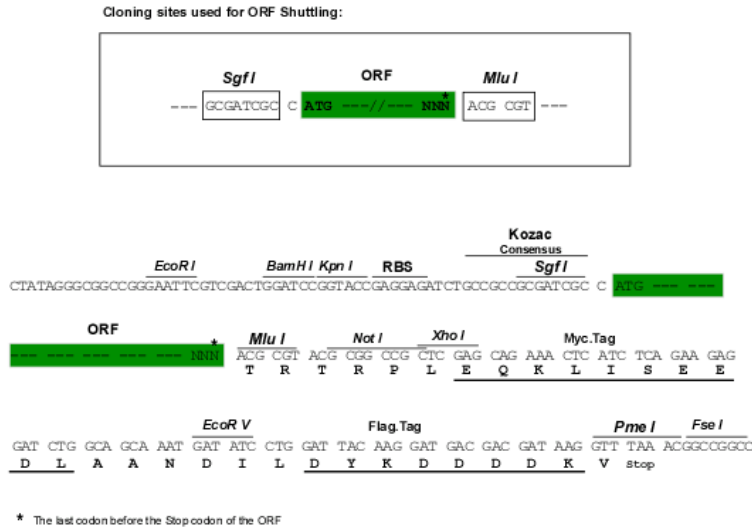
MGVCGYLFLPWKCLVVVSLRLLFLVPTGVPVRSGDATFPKAMDNVTVRQGESATLRCTIDNRVTRVAWLN
 RSTILYAGNDKWCLDPRVLLSNTQTQYSIEIQNVVYDEGPYTCVQTDNHPKTSRVHLIVQVSPKIVE
 ISSDISINEGNNISLTCIATGRPEPTVTRHISPKAVGFVSEDEYLEIQGITREQSGDYECASNDVAAP
 VVRRVKVTVNYPPYISEAKGTGVPVQKGLQCEASAVPSAEFQWYKDDKRLIEGKKGKVENRPFLLSKL
 IFFNVSEHDYGNVTCVASNKLGHNASIMLFGPGAVSEVSNGTSTRRAGCVWLLPLLVLHLLLLKF

TRTRPLEQKLISEEDLAANDILDYKDDDDKV

Chromatograms: https://cdn.origene.com/chromatograms/mk6048_h05.zip

Restriction Sites: SgfI-MluI

Cloning Scheme:



ACCN: NM_001048209

ORF Size: 1032 bp

OTI Disclaimer: The molecular sequence of this clone aligns with the gene accession number as a point of reference only. However, individual transcript sequences of the same gene can differ through naturally occurring variations (e.g. polymorphisms), each with its own valid existence. This clone is substantially in agreement with the reference, but a complete review of all prevailing variants is recommended prior to use. [More info](#)

OTI Annotation: This clone was engineered to express the complete ORF with an expression tag. Expression varies depending on the nature of the gene.

Components: The ORF clone is ion-exchange column purified and shipped in a 2D barcoded Matrix tube containing 10ug of transfection-ready, dried plasmid DNA (reconstitute with 100 ul of water).

Reconstitution Method:

1. Centrifuge at 5,000xg for 5min.
2. Carefully open the tube and add 100ul of sterile water to dissolve the DNA.
3. Close the tube and incubate for 10 minutes at room temperature.
4. Briefly vortex the tube and then do a quick spin (less than 5000xg) to concentrate the liquid at the bottom.
5. Store the suspended plasmid at -20°C. The DNA is stable for at least one year from date of shipping when stored at -20°C.

RefSeq Size: 3048 bp

RefSeq ORF: 1035 bp

Locus ID: 50863

UniProt ID: [Q9P121](#)

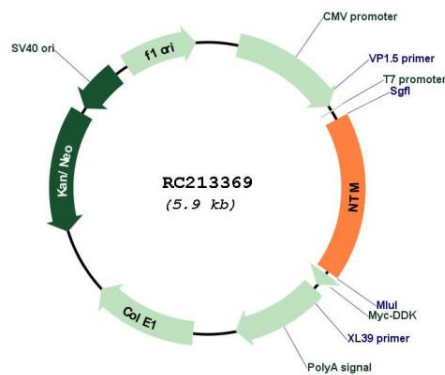
Cytogenetics: 11q25

Protein Families: Transmembrane

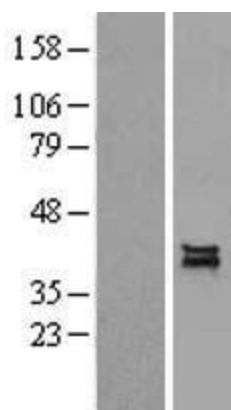
MW: 37.8 kDa

Gene Summary: This gene encodes a member of the IgLON (LAMP, OBCAM, Ntm) family of immunoglobulin (Ig) domain-containing glycosylphosphatidylinositol (GPI)-anchored cell adhesion molecules. The encoded protein may promote neurite outgrowth and adhesion via a homophilic mechanism. This gene is closely linked to a related family member, opioid binding protein/cell adhesion molecule-like (OPCML), on chromosome 11. Multiple transcript variants encoding different isoforms have been found for this gene. [provided by RefSeq, Jan 2009]

Product images:



Circular map for RC213369



Western blot validation of overexpression lysate (Cat# [LY402567]) using anti-DDK antibody (Cat# [TA50011-100]). Left: Cell lysates from untransfected HEK293T cells; Right: Cell lysates from HEK293T cells transfected with [RC215172] using transfection reagent MegaTran 2.0 (Cat# [TT210002]).