

Product datasheet for **RC213360**

AKIRIN1 (NM_024595) Human Tagged ORF Clone

Product data:

Product Type: Expression Plasmids
Product Name: AKIRIN1 (NM_024595) Human Tagged ORF Clone
Tag: Myc-DDK
Symbol: AKIRIN1
Synonyms: C1orf108; STRF2
Mammalian Cell Selection: Neomycin
Vector: pCMV6-Entry (PS100001)
E. coli Selection: Kanamycin (25 ug/mL)
ORF Nucleotide Sequence: >RC213360 representing NM_024595
Red=Cloning site Blue=ORF Green=Tags(s)

TTTTGTAATACGACTCACTATAGGGCGGCCGGAATTCGTCGACTGGATCCGGTACCGAGGAGATCTGCC
GCC**CGATCGCC**

ATGGCGTGCAGCGGCGACGCTGAAGCGGCCATGGAGTTCGAGGCGGCGTCTGAGCCCCGGCTCCCCGA
AGCGGCGGCGTGCGCCCTCTGCCCGGCCCACTCCGGGCTCAGGCCCGGACGCCAGCCGCCGCGC
GCCGTTTCAGACGCAGACCCACCGCAGAGTCTGCAGCAGCCCGCCCGCCGCGCAGCGAGCGGCGCCTT
CCAACCTCCGAGCAAATTTTTCAGAACATAAAACAAGAATATAGTCGTTATCAGAGGTGGAGACATTTAG
AAGTTGTTCTTAATCAGAGTGAAGCTTGTGCTTCGAAAGTCAACCTCACTCCTCAGCACTCACAGCACC
TAGCTCTCCAGGTTCTCATGGATGAAGAAGGACCAGCCACATTTACCTCCGACAAGTTGGCATAATA
TGTGAGCGCCTCTTAAAAGACTATGAAGATAAAATTCGGGAGGAGTATGAGCAAATCCTCAATACCAAAC
TAGCAGAAACAATGAATCTTTTGTGAAATTCACACATGATCAGATTATGCGACGGTATGGGACAAGGCC
ACAAGCTATGTGCA

ACGCGTACGCGGCCGCTCGAGCAGAACTCATCTCAGAAGAGGATCTGGCAGCAAATGATATCCTGGATT
ACAAGGATGACGACGATAAGGTTTAA

Protein Sequence: >RC213360 representing NM_024595
Red=Cloning site Green=Tags(s)

MACGATLKRPMFEAALLSPGSPKRRRCAPLPGPTPLRPPDAEPPPPFQTQTPPQSLQQPAPPGSERRL
PTPEQIFQNIKQEYSRYQRWRHLEVVLNQSEACASESQPHSSAL TAPSSPGSSWMKKDQPTFTLRQVGI
CERLLKDYEDKIREEYEQILNKLAEQYESFVKFTHDQIMRRYGRTPSYVS

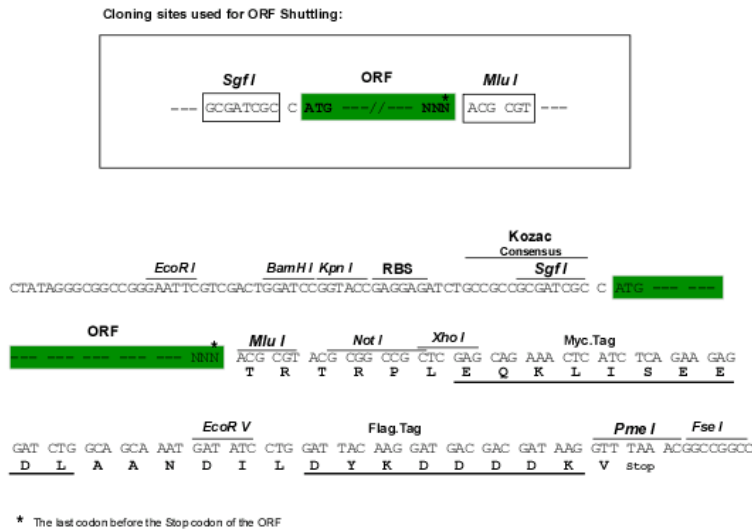
TRTRPLEQKLISEEDLAANDILDYKDDDDKV



[View online »](#)

Restriction Sites: SgfI-MluI

Cloning Scheme:



ACCN: NM_024595

ORF Size: 576 bp

OTI Disclaimer: The molecular sequence of this clone aligns with the gene accession number as a point of reference only. However, individual transcript sequences of the same gene can differ through naturally occurring variations (e.g. polymorphisms), each with its own valid existence. This clone is substantially in agreement with the reference, but a complete review of all prevailing variants is recommended prior to use. [More info](#)

OTI Annotation: This clone was engineered to express the complete ORF with an expression tag. Expression varies depending on the nature of the gene.

Components: The ORF clone is ion-exchange column purified and shipped in a 2D barcoded Matrix tube containing 10ug of transfection-ready, dried plasmid DNA (reconstitute with 100 ul of water).

Reconstitution Method:

1. Centrifuge at 5,000xg for 5min.
2. Carefully open the tube and add 100ul of sterile water to dissolve the DNA.
3. Close the tube and incubate for 10 minutes at room temperature.
4. Briefly vortex the tube and then do a quick spin (less than 5000xg) to concentrate the liquid at the bottom.
5. Store the suspended plasmid at -20°C. The DNA is stable for at least one year from date of shipping when stored at -20°C.

RefSeq: [NM_024595.3](#)

RefSeq Size: 1968 bp

RefSeq ORF: 579 bp

Locus ID: 79647

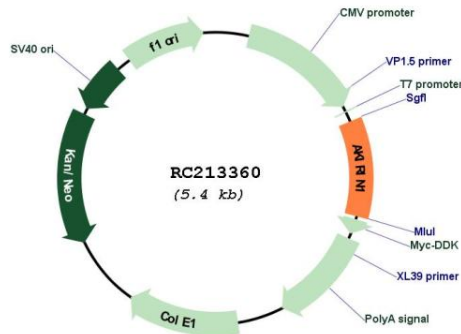
UniProt ID: [Q9H9L7](#)

Cytogenetics: 1p34.3

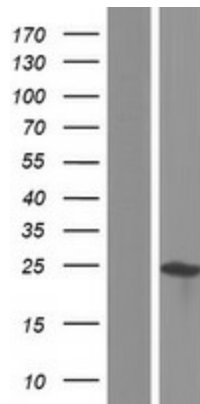
MW: 21.7 kDa

Gene Summary: Functions as signal transducer for MSTN during skeletal muscle regeneration and myogenesis. May regulates chemotaxis of both macrophages and myoblasts by reorganising actin cytoskeleton, leading to more efficient lamellipodia formation via a PI3 kinase dependent pathway.[UniProtKB/Swiss-Prot Function]

Product images:



Circular map for RC213360



Western blot validation of overexpression lysate (Cat# [LY411211]) using anti-DDK antibody (Cat# [TA50011-100]). Left: Cell lysates from untransfected HEK293T cells; Right: Cell lysates from HEK293T cells transfected with RC213360 using transfection reagent MegaTran 2.0 (Cat# [TT210002]).