

Product datasheet for **RC213352**

HEATR7A (MROH1) (NM_001099281) Human Tagged ORF Clone

Product data:

Product Type:	Expression Plasmids
Product Name:	HEATR7A (MROH1) (NM_001099281) Human Tagged ORF Clone
Tag:	Myc-DDK
Symbol:	HEATR7A
Synonyms:	HEATR7A
Mammalian Cell Selection:	Neomycin
Vector:	pCMV6-Entry (PS100001)
E. coli Selection:	Kanamycin (25 ug/mL)



[View online »](#)

ORF Nucleotide Sequence:

>RC213352 representing NM_001099281
 Red=Cloning site Blue=ORF Green=Tags(s)

TTTTGTAATACGACTCACTATAGGGCGGCCGGGAATTCGTCGACTGGATCCGGTACCGAGGAGATCTGCC
 GCC**CGGATCGCC**

ATGACTGAGTCCATGAAGAAGCTGGCTCCACCCTGCTGGACGCCATCACCGATAAGGACCCCTGG
 TGCAGGAGCAGGTCTGCAGTGCCCTGTGCTCCCTCGGGGAGGTGCGGCCGGTGGAGACGCTCCGTGCCTG
 CGAGGAGTATCTGCGGCAGCATGACAAGCTGGCACACCCATACCGAGCAGCGGTCTGAGGGCCATGGAG
 AGGGTCTGAGCAGTCGCGCCAGTGAGCTGGACAAGGACACAGCCAGCACCATCATCCTCTGGCCTCCA
 GCGAGATGACCAAGACGAAGGACCTGGTCTGGGACTGGCAGCAGGCGGCGAGTGGCGTCTGGTGGCCGT
 GGAAGACAGTTCATCAGCAAGGTGATGGAGGAGCTGCTGCGCAGGCTGCACCCTGGGACCCTGCCACAC
 TGCGCCGTGCTGCACACCCTCGCCAGCCTCTCGGTGGCCAACGCGTTGCGCGTAGTCCCCTTCTGCCAT
 CCGTCTGAGCTCCCTGCTGCCCGTCTGGGCGTGGCCAAGCAGGACACGGTGCAGTGGCCTTCTGCTC
 CGCTCTGCAGCGTTCAGCGAGGTTGCCCTGGAGTACCTAGCCAACCTGGACCGAGCCCCAGACCCACG
 GTCAGGAAGGACGCTTTGCCACCGACATCTTACGCGCTACGATGTTCTTCCATCAGTGGTGCAGA
 GTCGAGAAGCAAGCTCCGTCTTCCGCTGGTGGAGGCTCTGGGGCCTATGAGCCATCTGCTGCCAGTGA
 GAGGCTGGAAGAGCAGCTGCCAAGCTCCTCCCTGGGATTCTCGCCCTCTACAAGAAGCAGCAGAGACC
 TTCTACTTGTCCAAGAGCCTGGGCCAGATCCTCGAGGCAGCTGTGAGTGTGGCAGCCGCACACTGGAGA
 CCCAGCTGGATGCCCTCTTGGCTGCACTGCACTCCCAGATCTGTGTGCCTGTGGAGTCTCAAGCCCCCT
 GGTGATGAGTAACCAGAAGGAGGTGCTGCGCTGCTTACTGTGCTGGCCTGCAGCTCGCTGACCCGCTA
 CTGGCCTTCTGCTGCCAGGCTGGACACCAGCAATGAGAGGACCCGCGTGGGCACCCTGCAGGTGGTCA
 GACATGTCATCAACTCAGCTGGCAGCACTAACACCAGAATAAACAATGATGTTGCCATCAGCAGTACACG
 ACTGAAACATGAGGACTGCCCTGCACGTGCTGCTCCGACGCTGCTGATCTAACGGCCGCCCGCGTCT
 GTTGCT

AG**CGGACCG**ACGCGTACGCGGCCGCTCGAGCAGAACTCATCTCAGAAGAGGATCTGGCAGCAAATGATATCC
 TGGATTACAAGGATGACGACGATAAGGTTAA

Protein Sequence:

>RC213352 representing NM_001099281
 Red=Cloning site Green=Tags(s)

MTESSMKLASTLLDAITDKDPLVQEQVCSALCSLGEVRPVETLRACEEYLRQHDKLAHPYRAAVLRAME
 RVLSSRASELDKDTASTIILLASSEMTKTKDLVWDWQQAASGVLVAVGRQFISKVMEELLRRLHPGTLPH
 CAVLHTLASLSVANAFGVVFPFLPSVLSLLPVLGVAQDQTVRVAFCALQRFSEGALEYLANLDRAPDPT
 VRKDAFATDIFSAVDLHQWLSREAKRLAVVEALGPMShLLPSERLEEQLPKLLPGILALYKHAET
 FYLSKSLGQILEAAVSVGSRTLETQLDALLAALHSQICVPVESSSPLVMSNQKEVLRCFIVLACSSPDRL
 LAFLLPRLDTSNERTRVGTQVVRHVINSAGSTNTRITLMLPSAVTRLKHEDCPARAAPQPADLTAAPAS
 VA

SGPTRTRRLEQKLISEEDLAANDILDYKDDDDKV

Chromatograms:

https://cdn.origene.com/chromatograms/ja1381_c12.zip

Restriction Sites:

Sgfl-RsrII

Cloning Scheme:


ACCN: NM_001099281

ORF Size: 1266 bp

OTI Disclaimer: The molecular sequence of this clone aligns with the gene accession number as a point of reference only. However, individual transcript sequences of the same gene can differ through naturally occurring variations (e.g. polymorphisms), each with its own valid existence. This clone is substantially in agreement with the reference, but a complete review of all prevailing variants is recommended prior to use. [More info](#)

OTI Annotation: This clone was engineered to express the complete ORF with an expression tag. Expression varies depending on the nature of the gene.

Components: The ORF clone is ion-exchange column purified and shipped in a 2D barcoded Matrix tube containing 10ug of transfection-ready, dried plasmid DNA (reconstitute with 100 ul of water).

Reconstitution Method:

1. Centrifuge at 5,000xg for 5min.
2. Carefully open the tube and add 100ul of sterile water to dissolve the DNA.
3. Close the tube and incubate for 10 minutes at room temperature.
4. Briefly vortex the tube and then do a quick spin (less than 5000xg) to concentrate the liquid at the bottom.
5. Store the suspended plasmid at -20°C. The DNA is stable for at least one year from date of shipping when stored at -20°C.

RefSeq: [NM_001099281.2](#), [NP_001092751.1](#)

RefSeq Size: 1744 bp

RefSeq ORF: 1269 bp

Locus ID: 727957

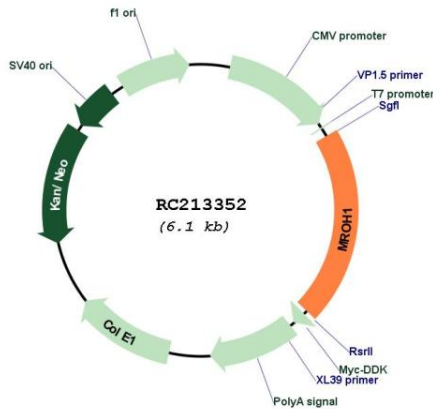
UniProt ID: [Q8NDA8](#)

Cytogenetics: 8q24.3

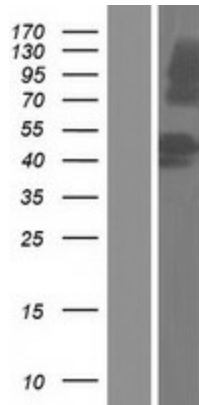
Protein Families: Druggable Genome

MW: 45.9 kDa

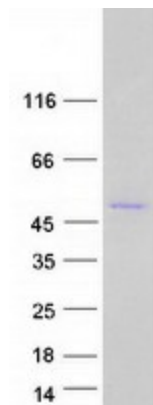
Product images:



Circular map for RC213352



Western blot validation of overexpression lysate (Cat# [LY420420]) using anti-DDK antibody (Cat# [TA50011-100]). Left: Cell lysates from untransfected HEK293T cells; Right: Cell lysates from HEK293T cells transfected with RC213352 using transfection reagent MegaTran 2.0 (Cat# [TT210002]).



Coomassie blue staining of purified MROH1 protein (Cat# [TP313352]). The protein was produced from HEK293T cells transfected with MROH1 cDNA clone (Cat# RC213352) using MegaTran 2.0 (Cat# [TT210002]).