

Product datasheet for RC213347

C9orf66 (NM_152569) Human Tagged ORF Clone

Product data:

Product Type:	Expression Plasmids
Product Name:	C9orf66 (NM_152569) Human Tagged ORF Clone
Tag:	Myc-DDK
Symbol:	C9orf66
Synonyms:	RP11-5906.1
Mammalian Cell Selection:	Neomycin
Vector:	pCMV6-Entry (PS100001)
E. coli Selection:	Kanamycin (25 ug/mL)
ORF Nucleotide Sequence:	>RC213347 representing NM_152569 Red=Cloning site Blue=ORF Green=Tags(s)

TTTTGTAATACGACTCACTATAGGGCGGCCGGAATTCGTCGACTGGATCCGGTACCGAGGAGATCTGCC
GCC**CGATCGCC**

ATGAGACACTCCGTGGCGGCCAACACGGTTACCCAGGCGCCTATCACCCCTTCTGGGACCCGGCCACCT
GTAAGAACCTGGAGGGCGGAGCGGGCGAGGTTGTTGCGGGAAGGGATCCCCGGCGGCTGAGGACATCCAG
GAGCACCGAGATTCTTGGGGAGGACCTCGCCGGGCCAGCGCAGGAGCCCGCGCGTCCAGCGGCTCCA
CCGCCGAGCCTCGGGAACCGGGCGCCCCAGGTCTCAGGCGGCCCGCCGCGGACGCGAATGGACTCGT
CCGGCCTCGGCCCTGCAGCGAAGCTCCGTTTACACCAGCGCTGGGCTGTCCGGCCGAACCTGCGCGC
CGCGGGGGCGTCTTACCTGTTGATCTTGAGCGGAACGCGCGGCGCTCTGCGCTCGGCAGAGTGGCCAT
GGCCCCCGCGGTTTCGGTGGCTTCTAGGGTCGCGGGGTGCGGAAAGCGGGGCCCTGGCGCGCCGAGAG
TAGCCGCGGAACATGCCAGCCAAGCGCAAACCTCGTCTGTCCGGTCCGGCCTGGAACCTCCGCATTTC
ACCTTCTAAGCCGAAATCACCCGGGGAGGGTCCGAGCTCGGAGCAGCGACGGCCGGCTCCGCCACCCG
GCCTGGCGCGCAGGACGCGGGCGGAGGAGGGCGTGGGCCAGCGCGGAACTGGCTCCCGATACTGGG
GCAGACGGCGGCTCTGCCGGGGCCCGACCTCCGGCCGAAGGAGCGCGGGCGGACGACAGGCGACC
ACTGCGCGCAGGCCGGAAGCTCCATCTGCCCGAAGCTGCGAGGCTGCCAGGGAATGTAGGCAAGTCGGGG
GAGCCCCACAAAGCTGGCGAGGTCGGGAATCACCCAGGGATTTC

ACGCGTACGCGGGCCGCTCGAGCAGAAACTCATCTCAGAAGAGGATCTGGCAGCAAATGATATCCTGGATT
ACAAGGATGACGACGATAAGGTTTAA



[View online »](#)

Protein Sequence: >RC213347 representing NM_152569
Red=Cloning site Green=Tags(s)

MRHSVARPTRLPRRLSPFWDPATCKNLEGGAGEVVRGRDPRRLRTSRSTEILGEDLAGPSAGAAARPAAP
 PPQPREPGAPGLRRAPPRTRMDSSGLGPCSEAPLHTSAGLSGRNLRAAGGVLVDLERERAALCARQSGH
 GPPAVRWLLGSRGAESGGLARRRVAAEHAQPSANLVCRSALETSAFPSPKPKSPRGRVRRARSSDGRLRHP
 AWRAGSGGRGGRGPPSAELASRYWGRRRALPGAADLRPKGARADRRRPLRAGRKLHLPEAARLPGNVGKSG
 EPHKAGEVGNHRDPS

TRTRPLEQKLISEEDLAANDILDYKDDDDKV

Chromatograms: https://cdn.origene.com/chromatograms/mk8024_a06.zip

Restriction Sites: SgfI-MluI

Cloning Scheme:



ACCN: NM_152569

ORF Size: 885 bp

OTI Disclaimer: The molecular sequence of this clone aligns with the gene accession number as a point of reference only. However, individual transcript sequences of the same gene can differ through naturally occurring variations (e.g. polymorphisms), each with its own valid existence. This clone is substantially in agreement with the reference, but a complete review of all prevailing variants is recommended prior to use. [More info](#)

OTI Annotation: This clone was engineered to express the complete ORF with an expression tag. Expression varies depending on the nature of the gene.

Components: The ORF clone is ion-exchange column purified and shipped in a 2D barcoded Matrix tube containing 10ug of transfection-ready, dried plasmid DNA (reconstitute with 100 ul of water).

Reconstitution Method:

1. Centrifuge at 5,000xg for 5min.
2. Carefully open the tube and add 100ul of sterile water to dissolve the DNA.
3. Close the tube and incubate for 10 minutes at room temperature.
4. Briefly vortex the tube and then do a quick spin (less than 5000xg) to concentrate the liquid at the bottom.
5. Store the suspended plasmid at -20°C. The DNA is stable for at least one year from date of shipping when stored at -20°C.

Note: Plasmids are not sterile. For experiments where strict sterility is required, filtration with 0.22um filter is required.

RefSeq: [NM_152569.2](#), [NP_689782.2](#)

RefSeq Size: 2279 bp

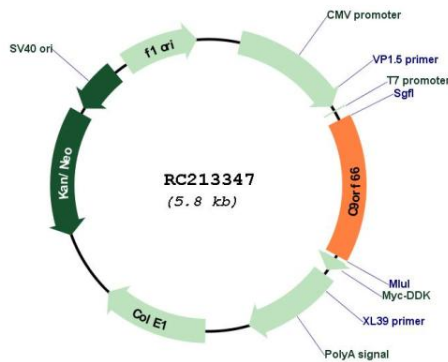
RefSeq ORF: 888 bp

Locus ID: 157983

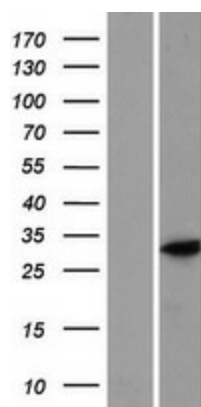
Cytogenetics: 9p24.3

MW: 31 kDa

Product images:



Circular map for RC213347



Western blot validation of overexpression lysate (Cat# [LY407439]) using anti-DDK antibody (Cat# [TA50011-100]). Left: Cell lysates from untransfected HEK293T cells; Right: Cell lysates from HEK293T cells transfected with RC213347 using transfection reagent MegaTran 2.0 (Cat# [TT210002]).