

Product datasheet for **RC213338**

GATD1 (NM_182612) Human Tagged ORF Clone

Product data:

Product Type: Expression Plasmids
Product Name: GATD1 (NM_182612) Human Tagged ORF Clone
Tag: Myc-DDK
Symbol: GATD1
Synonyms: PDDC1
Mammalian Cell Selection: Neomycin
Vector: pCMV6-Entry (PS100001)
E. coli Selection: Kanamycin (25 ug/mL)
ORF Nucleotide Sequence: >RC213338 representing NM_182612
Red=Cloning site Blue=ORF Green=Tags(s)

TTTTGTAATACGACTCACTATAGGGCGGCCGGAATTCGTCGACTGGATCCGGTACCGAGGAGATCTGCC
GCC**CGATCGCC**

ATGGCGTCCGAGCGGCTCCCTAACAGGCCCGCCTGTCTGCTCGTGGCCAGCGGGCCGCCGAAGGTGTG
CGGCCAGTCCTTCTCCACTGTTTCACGATGGCCAGCACCGCCTTCAACCTGCAGGTGGCCACCCCTGG
GGGAAAGCCATGGAATTTGTGGATGTGACTGAGAGCAATGCACGCTGGGTGCAAGACTTCCGCCTCAAG
GCTTACGCCAGCCCCGCAAGCTCGAGTCCATCGATGGTGCCCGTACCATGCCCTCCTGATCCCCAGT
GTCTGGGGCCCTGACCGACCTGGCCAGCAGTGGCTCCCTGGCCGTATCCTGCAGCACTTCCACTCTGA
GAGCAAACCCATCTGCGCCGTCGGCCACGGTGTGCGCCGCTGTGCTGTGCCACCAACGAGGACAGATCC
TGGGTGTTGACAGCTACAGCCTGACAGGGCCCTCCGTGTGTGAGCTCGTCAGGGCCCCGGCTTCGCC
GCCTGCCGCTCGTGGTGGAGGACTTCGTGAAGGATTCGGGCGCCTGCTTCAGTGCAAGCGAGCCTGACGC
TGTCCACGTCGTGCTGGACCGCCACCTGGTCACAGGCCAGAATGCCAGCTCCACTGTCCCGCCGTGCAG
AACCTGCTCTTCTCTGTGGCAGCCGAAA

ACGCGTACGCGGGCCGCTCGAGCAGAAACTCATCTCAGAAGAGGATCTGGCAGCAAATGATATCCTGGATT
ACAAGGATGACGACGATAAGGTTTAA



Protein Sequence: >RC213338 representing NM_182612
Red=Cloning site Green=Tags(s)

MASERLPNRPACLLVASGAAEGVSAQSFLLHCFMSTAFNLQVATPGGKAMEFVDVTESNARWVQDFRLK
 AYASPAKLESIDGARYHALLIPSCPGALDLASSGSLARILQHFHSESKPICAVGHGVAALCCATNEDRS
 WVFDSYSLTGPSVCELVRAPGFARLPLVVEDFVKDSGACFSASEPDAVHVVLDRHLVLTGQNASSTVPAVK
 NLLFLCGSRK

TRTRPLEQKLISEEDLAANDILDYKDDDDKV

Chromatograms: https://cdn.origene.com/chromatograms/mk8013_f01.zip

Restriction Sites: SgfI-MluI

Cloning Scheme:



ACCN: NM_182612

ORF Size: 660 bp

OTI Disclaimer: The molecular sequence of this clone aligns with the gene accession number as a point of reference only. However, individual transcript sequences of the same gene can differ through naturally occurring variations (e.g. polymorphisms), each with its own valid existence. This clone is substantially in agreement with the reference, but a complete review of all prevailing variants is recommended prior to use. [More info](#)

OTI Annotation: This clone was engineered to express the complete ORF with an expression tag. Expression varies depending on the nature of the gene.

Components: The ORF clone is ion-exchange column purified and shipped in a 2D barcoded Matrix tube containing 10ug of transfection-ready, dried plasmid DNA (reconstitute with 100 ul of water).

Reconstitution Method:

1. Centrifuge at 5,000xg for 5min.
2. Carefully open the tube and add 100ul of sterile water to dissolve the DNA.
3. Close the tube and incubate for 10 minutes at room temperature.
4. Briefly vortex the tube and then do a quick spin (less than 5000xg) to concentrate the liquid at the bottom.
5. Store the suspended plasmid at -20°C. The DNA is stable for at least one year from date of shipping when stored at -20°C.

Note: Plasmids are not sterile. For experiments where strict sterility is required, filtration with 0.22um filter is required.

RefSeq: [NM_182612.1](#), [NP_872418.1](#)

RefSeq Size: 2598 bp

RefSeq ORF: 663 bp

Locus ID: 347862

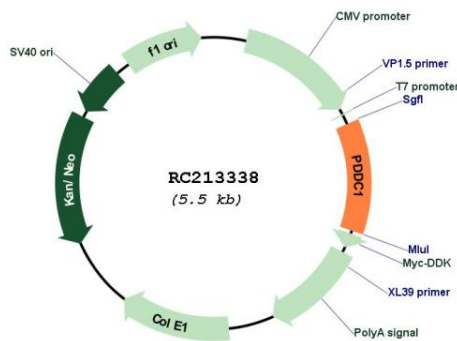
UniProt ID: [Q8NB37](#)

Cytogenetics: 11p15.5

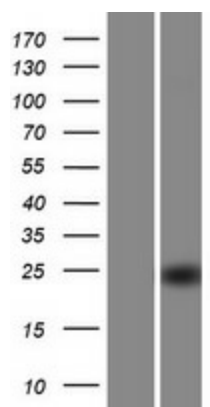
Protein Families: Protease

MW: 23.1 kDa

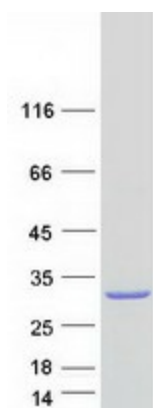
Product images:



Circular map for RC213338



Western blot validation of overexpression lysate (Cat# [LY405457]) using anti-DDK antibody (Cat# [TA50011-100]). Left: Cell lysates from untransfected HEK293T cells; Right: Cell lysates from HEK293T cells transfected with RC213338 using transfection reagent MegaTran 2.0 (Cat# [TT210002]).



Coomassie blue staining of purified GATD1 protein (Cat# [TP313338]). The protein was produced from HEK293T cells transfected with GATD1 cDNA clone (Cat# RC213338) using MegaTran 2.0 (Cat# [TT210002]).