

Product datasheet for **RC213333**

TrkC (NTRK3) (NM_002530) Human Tagged ORF Clone

Product data:

Product Type:	Expression Plasmids
Product Name:	TrkC (NTRK3) (NM_002530) Human Tagged ORF Clone
Tag:	Myc-DDK
Symbol:	TrkC
Synonyms:	gp145(trkC); GP145-TrkC; TRKC
Mammalian Cell Selection:	Neomycin
Vector:	pCMV6-Entry (PS100001)
E. coli Selection:	Kanamycin (25 ug/mL)



[View online »](#)

ORF Nucleotide Sequence:

>RC213333 representing NM_002530
 Red=Cloning site Blue=ORF Green=Tags(s)

TTTTGTAATACGACTCACTATAGGGCGGCCGGGAATTCGTGACTGGATCCGGTACCGAGGAGATCTGCC
 GCC**CGGATCGCC**

ATGGATGTCTCTCTTTGCCAGCCAAGTGTAGTTCTGGCGGATTTTCTGCTGGGAAGCGTCTGGCTGG
 ACTATGTGGGCTCCGTGCTGGCTTGCCCTGCAAATTGTGTCTGCAGCAAGACTGAGATCAATTGCCGGCG
 GCCGGACGATGGGAACCTCTCCCCCTCCTGGAAGGGCAGGATTCAGGGAACAGCAATGGGAACGCCAGT
 ATCAACATCACGGACATCTCAAGGAATACACTCCATACACATAGAGAAGTGGCGCAGTCTTACACGC
 TCAACGCCGTGGACATGGAGCTTACACCGGACTTCAAAAGCTGACCATCAAGAAGTCAAGACTTCCGGAG
 CATTACAGCCAGAGCCTTTGCCAAGAACCCCATTTGCGTTATATAAACCTGTCAAGTAACCGGCTCACC
 AACTCTCGTGGCAGCTTCCAGACGCTGAGTCTTGGGAATTGCAGTTGGAGCAGAAGTCTTCAACT
 GCAGCTGTGACATCCGCTGGATGCAGCTCTGGCAGGAGCAGGGGAGGCCAAGCTCAACAGCCAGAAGCT
 CTACTGCATCAACGCTGATGGCTCCAGCTTCTCTCTTCCGCATGAACATCAGTCAGTGTGACCTTCT
 GAGATCAGCGTGAAGCCAGTCAACCTGACCGTACGAGAGGGTGACAATGCTGTTATCACTTGCAATGGCT
 CTGGATCACCCCTTCTGATGTGGACTGGATAGTCACTGGGCTGCAGTCCATCAACACTCACCAGACCAA
 TCTGAAGTGGACCAATGTTTCATGCCATCAACTTGACGCTGGTGAATGTGACGAGTGGAGCAATGGCTTC
 ACCCTGACGTGCATTGCAGAGAAGCTGGTGGGCATGAGCAATGCCAGTGTGGCCCTCACTGTCTACTATC
 CCCACGTGTGGTGGAGCCTGGAGGAGCCTGAGCTGCGCCTGGAGCACTGCATCGAGTTTGGTGGCTGG
 CAACCCCAACCAACGCTGCACTGGCTGCACAATGGGCAGCCTCTGCGGGAGTCCAAGATCATCCATGTG
 GAATACTACCAAGAGGGAGAGATTTCCGAGGGCTGCCTGCTTCAACAAGCCCAACCACTACAACAATG
 GCAACTATACCTCATTGCCAAAAACCCACTGGGCACAGCCAACCAGACCATCAATGGCCACTTCTCAAG
 GGAGCCCTTTCCAGAGAGCACGGATAACTTTATCTTGTGACGAAGTGAGTCCCACACCTCCTATCACT
 GTGACCCACAAAACAGAGAAGACACTTTTGGGTATCCATAGCAGTTGGACTTGTGCTTTTGCCTGTG
 TCCTGTTGGTGGTCTCTTCGTATGATCAACAAATATGGTGCACGGTCCAAATTTGGAATGAAGGGTCC
 CGTGGCTGTATCAGTGGTGGAGGAGTCAAGCCAGCCACTGCACCACATCAACCACGGCATCACCACG
 CCCTCGTCACTGGATGCCGGGCCGACTGTGGTCAATGGCATGACTCGCATCCCTGTCTTGGAGAAC
 CCCAGTACTTCCGTCAGGGACACAAGTCCACAAGCCGGACACGTATGTGCAGCACATTAAGAGGAGAGA
 CATCGTGTGAAGCGAGAAGTGGTGGAGGAGCCTTTGAAAGGTCTTCTGGCCGAGTGTACAACCTC
 AGCCCGACCAAGGACAAGATGCTTGTGGCTGTGAAGGCCCTGAAGGATCCCACTGGCTGCCCGAAGG
 ATTTCCAGAGGGAGGCCGAGTGTCCCAACCTGCAGCATGAGCACATTGTCAAGTTCTATGGAGTGTG
 CGCGATGGGGACCCCTCATCATGGTCTTTGAATACATGAAGCATGGAGACCTGAATAAGTTCTCAGG
 GCCCATGGCCAGATGCAATGATCCTTGTGGATGGACAGCCACGCCAGGCCAAGGGTGGAGTGGGGCTCT
 CCCAAATGCTCCACATTGCCAGTCAAGTGCCTCGGGTATGGTGTACCTGGCCTCCAGCACTTTGTGCA
 CCGAGACTGGCCACCAGGAAGTGCCTGGTGGAGCGAATCTGTAGTGAAGATTGGGGACTTCGGCATG
 TCCAGAGATGTCTACAGCACGGATATTACAGGGTGGGAGGACACACCATGCTCCCAATTCGCTGGATG
 CTCCTGAAAGCATCATGTACCGAAGTTCACACAGAGAGTGTATGAGCTTCGGGGTATCCTCTG
 GGAGATCTTACCTATGGAAAGCAGCCATGGTTCCAACCTCAACACGGAGGTCATTGAGTGCATTACC
 CAAGGTCTGTTTTGGAGCGGCCCGAGTCTGCCCAAAGAGGTGTACGATGTATGCTGGGGTGTGCTGGC
 AGAGGGAACACAGCAGCGGTTGAACATCAAGGAGATCTACAAAATCCTCCATGCTTTGGGAAGGCCAC
 CCCAATCTACCTGGACATTCTTGGC

ACGGTACGCGGCCGCTCGAGCAGAACTCATCTCAGAAGAGGATCTGGCAGCAATGATATCCTGGATT
 ACAAGGATGACGACGATAAGGTTTAA

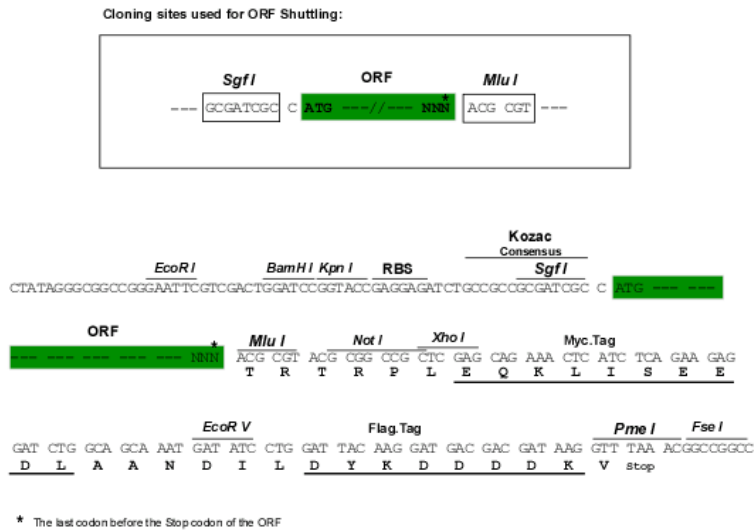
Protein Sequence: >RC213333 representing NM_002530
Red=Cloning site Green=Tags(s)

MDVSLCPAKCSFWRIFLLGSVWLDYVGSVLACPANCVCCKTEINCRPPDDGNLFPLLEGQDSGNSNGNAS
INITDISRNITSIHIENWRSLHTLNAVDMELYTGLQKLTIKNSGLRSIQPRAFAKNPHLRINLSSNRLT
TLQSWQLFQTLQSLRELQLEQNFFNCSCDIRWMLWQEQGEAKLNSQNLQYINADGSQPLFRMNISQCDLP
EISVSHVNLTVREGDNAVITCNGSGSPLPDVDWIIVTGLQSIINTHTNLNWTNVHAINLTLVNVTSSENGF
TLTCIAENVVGMNASVALTVYYPPRVVSLPEELRLEHCIEFVVRGNPPPTLHWHNGQPLRESKIIHV
EYYQEGEISEGCLLFNKPTHYNNNGNYTLIAKNPLGTANQTINGHFLKEPFPESTDNFILFDEVSPPTPIT
VTHKPEEDTFGVSIAVGLAAAFACVLLVFLVMINKYGRRSKFGMKGPVAVISGEEDSASPLHHINHGITT
PSSLDAGPDTVIGMTRIPVIENPQYFRQGHCHKPDYVQHIKRRDIVLKRELGEFAGKVFVLAECYNL
SPTKDKMLVAVKALKDPTLAARKDFQREALLTNLQHEHIVKFGVCGDGDPLIMVFEYMKHGDLNKFRLR
AHGPDAMILVDGQPRQAKGELGLSQMLHIASQIASGMVYLASQHFVHRDLATRNCLVGNLLVKIGDFGM
SRDVYSTDYRVRGGHTMLPIRWMPPESIMYRKFTTESDVWSFGVILWEIFTYGKQPFQLSNTEVIECIT
QGRVLERPRVCPKEVYDVMLGCWQREPQQLNIKEIYKILHALGKATPIYLDILG

TRTRPLEQKLISEEDLAANDILDYKDDDDKV

Chromatograms: https://cdn.origene.com/chromatograms/mk6105_h01.zip

Restriction Sites: Sgfl-Mlul

Cloning Scheme:


ACCN: NM_002530

ORF Size: 2475 bp

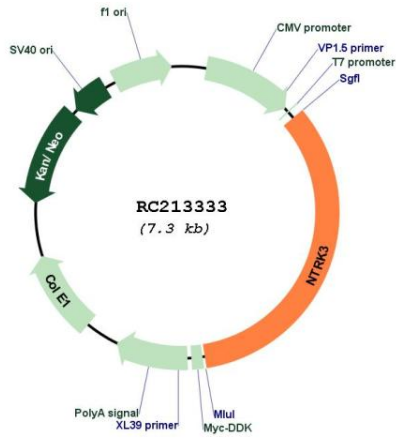
OTI Disclaimer: The molecular sequence of this clone aligns with the gene accession number as a point of reference only. However, individual transcript sequences of the same gene can differ through naturally occurring variations (e.g. polymorphisms), each with its own valid existence. This clone is substantially in agreement with the reference, but a complete review of all prevailing variants is recommended prior to use. [More info](#)

OTI Annotation: This clone was engineered to express the complete ORF with an expression tag. Expression varies depending on the nature of the gene.

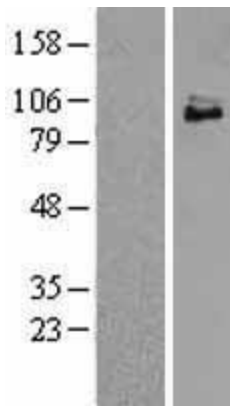
Components: The ORF clone is ion-exchange column purified and shipped in a 2D barcoded Matrix tube containing 10ug of transfection-ready, dried plasmid DNA (reconstitute with 100 ul of water).

Reconstitution Method:	<ol style="list-style-type: none">1. Centrifuge at 5,000xg for 5min.2. Carefully open the tube and add 100ul of sterile water to dissolve the DNA.3. Close the tube and incubate for 10 minutes at room temperature.4. Briefly vortex the tube and then do a quick spin (less than 5000xg) to concentrate the liquid at the bottom.5. Store the suspended plasmid at -20°C. The DNA is stable for at least one year from date of shipping when stored at -20°C.
Note:	Plasmids are not sterile. For experiments where strict sterility is required, filtration with 0.22um filter is required.
RefSeq:	NM_002530.3
RefSeq Size:	2818 bp
RefSeq ORF:	2478 bp
Locus ID:	4916
UniProt ID:	Q16288
Cytogenetics:	15q25.3
Domains:	LRRNT, LRRCT, pkinase, TyrKc, LRR, S_TKc, ig, IG
Protein Families:	Druggable Genome, Protein Kinase, Transmembrane
Protein Pathways:	Neurotrophin signaling pathway
MW:	92.8 kDa
Gene Summary:	This gene encodes a member of the neurotrophic tyrosine receptor kinase (NTRK) family. This kinase is a membrane-bound receptor that, upon neurotrophin binding, phosphorylates itself and members of the MAPK pathway. Signalling through this kinase leads to cell differentiation and may play a role in the development of proprioceptive neurons that sense body position. Mutations in this gene have been associated with medulloblastomas, secretory breast carcinomas and other cancers. Several transcript variants encoding different isoforms have been found for this gene. [provided by RefSeq, Jul 2011]

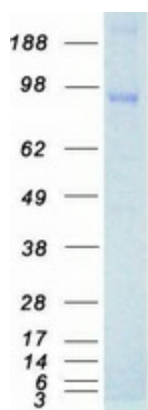
Product images:



Circular map for RC213333



Western blot validation of overexpression lysate (Cat# [LY400902]) using anti-DDK antibody (Cat# [TA50011-100]). Left: Cell lysates from untransfected HEK293T cells; Right: Cell lysates from HEK293T cells transfected with RC213333 using transfection reagent MegaTran 2.0 (Cat# [TT210002]).



Coomassie blue staining of purified NTRK3 protein (Cat# [TP313333]). The protein was produced from HEK293T cells transfected with NTRK3 cDNA clone (Cat# RC213333) using MegaTran 2.0 (Cat# [TT210002]).