

Product datasheet for **RC213326**

LST1 (NM_205839) Human Tagged ORF Clone

Product data:

Product Type: Expression Plasmids
Product Name: LST1 (NM_205839) Human Tagged ORF Clone
Tag: Myc-DDK
Symbol: LST1
Synonyms: B144; D6S49E; LST-1
Vector: pCMV6-Entry (PS100001)
E. coli Selection: Kanamycin (25 ug/mL)
Cell Selection: Neomycin
ORF Nucleotide Sequence: >RC213326 representing NM_205839
Red=Cloning site Blue=ORF Green=Tags(s)

TTTTGTAATACGACTCACTATAGGGCGCCGGAATTCGTCGACTGGATCCGGTACCGAGGAGATCTGCC
GCC**CGGATCGCC**

ATGTTATCGCGGAATGATGATATATGTATCTACGGGGCCTGGGGCTGGGCGGGCTCCTGCTTCTGGCAG
TGGTCCTTCTGTCCGCTGCCTGTGTTGGCTGCATCGAAGAGTAAAGAGGCTGGAGAGGAGCTGGGCCCA
GGGCTCCTCAGAGCAGGAATCCACTATGCATCTCTGCAGAGGCTGCCAGTGCCAGCAGTGAGGGACCT
GACCTCAGGGGCAGAGACAAGAGAGGCACCAAGGAGGATCCAAGAGCTGACTATGCCTGCATTGCTGAGA
ACAAACCCACC

ACGCGTACGCGGCCGCTCGAGCAGAACTCATCTCAGAAGAGGATCTGGCAGCAAATGATATCCTGGATT
ACAAGGATGACGACGATAAGGTTTAA

Protein Sequence: >RC213326 representing NM_205839
Red=Cloning site Green=Tags(s)

MLSRNDDICIYGLGLGGLLLLAVLLSACLWLHRRVKRLERSWAQGSSEQELHYASLQRLPVPSPSEGP
DLRGRDKRGTKEPRADYACIAENKPT

TRTRPLEQKLISEEDLAANDILDYKDDDDKV

Restriction Sites: SgfI-MluI

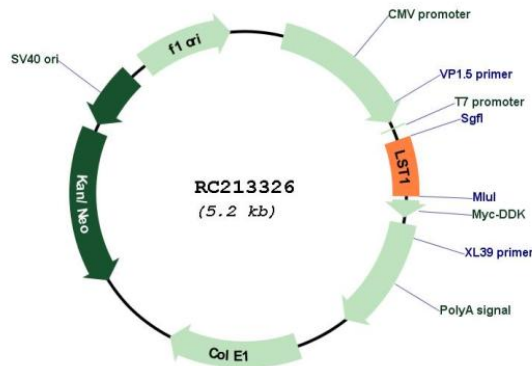


[View online »](#)

Cloning Scheme:



Plasmid Map:



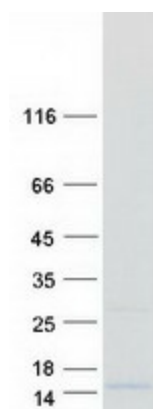
ACCN: NM_205839

ORF Size: 291 bp

OTI Disclaimer: The molecular sequence of this clone aligns with the gene accession number as a point of reference only. However, individual transcript sequences of the same gene can differ through naturally occurring variations (e.g. polymorphisms), each with its own valid existence. This clone is substantially in agreement with the reference, but a complete review of all prevailing variants is recommended prior to use. [More info](#)

OTI Annotation:	This clone was engineered to express the complete ORF with an expression tag. Expression varies depending on the nature of the gene.
Components:	The ORF clone is ion-exchange column purified and shipped in a 2D barcoded Matrix tube containing 10ug of transfection-ready, dried plasmid DNA (reconstitute with 100 ul of water).
Reconstitution Method:	<ol style="list-style-type: none">1. Centrifuge at 5,000xg for 5min.2. Carefully open the tube and add 100ul of sterile water to dissolve the DNA.3. Close the tube and incubate for 10 minutes at room temperature.4. Briefly vortex the tube and then do a quick spin (less than 5000xg) to concentrate the liquid at the bottom.5. Store the suspended plasmid at -20°C. The DNA is stable for at least one year from date of shipping when stored at -20°C.
RefSeq:	NM_205839.3
RefSeq Size:	769 bp
RefSeq ORF:	294 bp
Locus ID:	7940
UniProt ID:	O00453
Cytogenetics:	6p21.33
Protein Families:	Transmembrane
MW:	10.8 kDa
Gene Summary:	The protein encoded by this gene is a membrane protein that can inhibit the proliferation of lymphocytes. Expression of this gene is enhanced by lipopolysaccharide, interferon-gamma, and bacteria. Several transcript variants encoding different isoforms have been found for this gene. [provided by RefSeq, Oct 2011]

Product images:



Coomassie blue staining of purified LST1 protein (Cat# [TP313326]). The protein was produced from HEK293T cells transfected with LST1 cDNA clone (Cat# RC213326) using MegaTran 2.0 (Cat# [TT210002]).