

Product datasheet for RC213325

C9orf47 (NM_001001938) Human Tagged ORF Clone

Product data:

Product Type: Expression Plasmids
Product Name: C9orf47 (NM_001001938) Human Tagged ORF Clone
Tag: Myc-DDK
Symbol: C9orf47
Synonyms: bA791O21.3; C9orf108
Mammalian Cell Selection: Neomycin
Vector: pCMV6-Entry (PS100001)
E. coli Selection: Kanamycin (25 ug/mL)
ORF Nucleotide Sequence: >RC213325 representing NM_001001938
 Red=Cloning site Blue=ORF Green=Tags(s)

TTTTGTAATACGACTCACTATAGGGCGCCGGGAATTCGTCGACTGGATCCGGTACCGAGGAGATCTGCC
 GCCCGCATCGCC

ATGGTCAGGATCTGGACAACGATAATGATAGTATTAATCCTCCTATTAAGAATCGGCCAAACAAACCTT
 CGCTGTCAGGGGACAGGCGCCCGCCCAAGCCAGACCTCGGACCTGGTCCAAGCTGTTCCCGCTGGG
 TCTCTGGGCGCCCGTTTCTGCACCTGGAGCTCGCCGATGAGGACAAGGTCTGGAGGCCGGCTGGAA
 CAGGGGCCGAAGGGCGAGCCGGACCTAGGGGATTGAGGCCGAGGAAGCCGGTCCGGGGACGGCAACA
 GGGACTCAGGGACCAGAAGGCGGCTGCAGGACCGGACCGAGCAGGACCCAGGCCGGGAACGACGTCGC
 GAGCGCTGAGACTGCCGGGCTCCAGCCATCTGGCATTGAGCGCAGGACCGGGCGCCCGGCACCGC
 CGCGCGCCACCCGCTAGGATGCCGGTGGCCCCAGCGCCCTCAGCCGACGGAGAGCCGCTGCAGGAACAGG
 GAGGAGGCCTTTTCCACCGCACCCGGAGCGTTTACAACGGGCTGGAGCTGAATACCTGGATGAAAGTGGA
 GAGGCTGTTCTGGAGAAGTTCATCAGTCGTTTTCTTGGAAT

ACGCGTACGCGGCCGCTCGAGCAGAACTCATCTCAGAAGAGGATCTGGCAGCAATGATATCCTGGATT
 ACAAGGATGACGACGATAAGGTTTAA

Protein Sequence: >RC213325 representing NM_001001938
 Red=Cloning site Green=Tags(s)

MVRIWTTIMIVLILLRIGPNKPSLSGRQAPAQAQTS DLVPSLFPLGLWAPGFCTWSSPDEDK VWRPAWE
 QGPKGEPDRGLRPRKVPVGTGNRDSGTRRRLQDATEQDPRPGNDVASAETAGPPSPSGIRAQDRAPRHR
 RAPPARMPVAPAPSADGEPLQEQQGGLFHRTRSVYNGLELNTWMKVERL FVEKFHQSFSLDN

TRTRPLEQKLISEEDLAANDILDYKDDDDKV

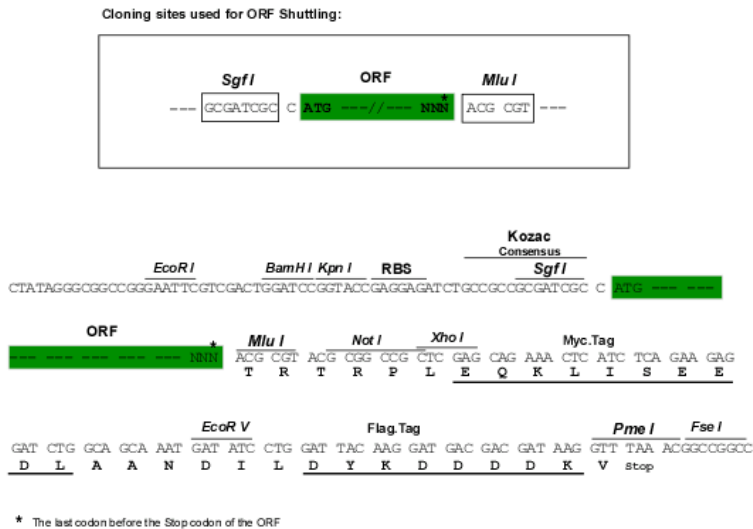


[View online »](#)

Chromatograms: https://cdn.origene.com/chromatograms/mk8001_d06.zip

Restriction Sites: SgfI-MluI

Cloning Scheme:



ACCN: NM_001001938

ORF Size: 606 bp

OTI Disclaimer: The molecular sequence of this clone aligns with the gene accession number as a point of reference only. However, individual transcript sequences of the same gene can differ through naturally occurring variations (e.g. polymorphisms), each with its own valid existence. This clone is substantially in agreement with the reference, but a complete review of all prevailing variants is recommended prior to use. [More info](#)

OTI Annotation: This clone was engineered to express the complete ORF with an expression tag. Expression varies depending on the nature of the gene.

Components: The ORF clone is ion-exchange column purified and shipped in a 2D barcoded Matrix tube containing 10ug of transfection-ready, dried plasmid DNA (reconstitute with 100 ul of water).

Reconstitution Method:

1. Centrifuge at 5,000xg for 5min.
2. Carefully open the tube and add 100ul of sterile water to dissolve the DNA.
3. Close the tube and incubate for 10 minutes at room temperature.
4. Briefly vortex the tube and then do a quick spin (less than 5000xg) to concentrate the liquid at the bottom.
5. Store the suspended plasmid at -20°C. The DNA is stable for at least one year from date of shipping when stored at -20°C.

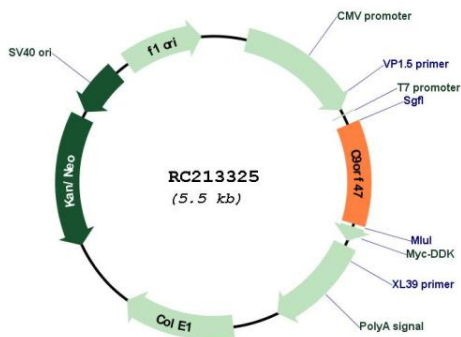
RefSeq: [NM_001001938.3](#), [NP_001001938.1](#)

RefSeq Size: 4829 bp

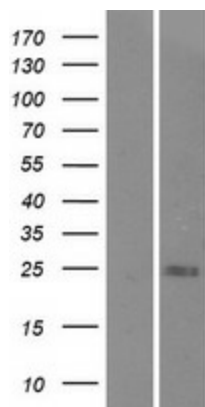
RefSeq ORF: 609 bp

Locus ID: 286223

UniProt ID: [Q6ZRZ4](#)
Cytogenetics: 9q22.1
Protein Families: Secreted Protein
MW: 22.1 kDa

Product images:


Circular map for RC213325



Western blot validation of overexpression lysate (Cat# [LY424284]) using anti-DDK antibody (Cat# [TA50011-100]). Left: Cell lysates from untransfected HEK293T cells; Right: Cell lysates from HEK293T cells transfected with RC213325 using transfection reagent MegaTran 2.0 (Cat# [TT210002]).