

Product datasheet for RC213319

NMBR (NM_002511) Human Tagged ORF Clone

Product data:

Product Type:	Expression Plasmids
Product Name:	NMBR (NM_002511) Human Tagged ORF Clone
Tag:	Myc-DDK
Symbol:	NMBR
Synonyms:	BB1; BB1R; BRS1; NMB-R
Mammalian Cell Selection:	Neomycin
Vector:	pCMV6-Entry (PS100001)
E. coli Selection:	Kanamycin (25 ug/mL)
ORF Nucleotide Sequence:	>RC213319 representing NM_002511 Red=Cloning site Blue=ORF Green=Tags(s)

TTTTGTAATACGACTCACTATAGGGCGGCCGGAATTCGTCGACTGGATCCGGTACCGAGGAGATCTGCC
GCC**CGATCGCC**

ATGCCCTCTAAGTCTCTTTCCAACCTCTCGGTGACCACCGCGCGAATGAGAGCGGTTCCGTTCCCGAGG
GGTGGGAAAGGGATTTCTGCCGGCCTCGGACGGGACCACCACGGAGTTGGTGATCCGCTGTGTATCCC
GTCCCTCTACCTGCTCATCATCACCGTGGGCTTGTGGGCAACATCATGTGGTGAAGATCTTCATACC
AACAGCGCATGAGGAGCGTCCCAACATCTTCATCTCTAACCTGGCGGCCGGGACTTGCTGCTGCTGC
TCACCTGCGTCCCGGTGGACGCCTCGCGTACTTCTCGACGAGTGGATGTTTGCAAGGTGGGCTGCAA
ACTGATCCCTGTATCCAGCTCACTTCCGTGGGGTTTCCGTGTTCACTCTCACTGCCCTCAGCGCCGAC
AGGTACAGAGCCATCGTTAACCCATGGACATGCAGACGTGAGGGCATTGCTGCGGACCTGTGTGAAGG
CCATGGGTATCTGGGTGGTCTCCGTGTTGCTGGCAGTTCCTGAAGCGGTGTTTTCAGAAGTGGCTCGCAT
CAGTAGCTTGATAATAGCAGCTTACAGCATGTATCCATACCCTCAAACAGATGAATTACATCCAAAAG
ATTCATTAGTGTCTATTTTCTGGTCTATTTCCATACCACTTGCCATTATTAGCATTATTATTGTC
ATATTGCAAAGACCTTAATTAAGCGCACACAATCTTCTGGAGAATAACAATGAACATACCAAAAAACA
GATGGAAAACCGAAACGCTGGCTAAAATTGTGCTTGTCTTTGGGCTGTTTCATCTTCTGTTGGTTT
CCAAACCACATCCTTTACATGTATCGGTCTTTCAACTATAATGAGATTGATCCATCTCTAGGCCACATGA
TTGTACCTTAGTTGCCGGGTTCTCAGTTTTGGCAATCTTGTGTCAACCCATTTGCTCTTTACCTACT
CAGTAAAAGCTTCAAGAGGCATTCAACAGCCTCTGCTGTGGGAGGAAGTCATCAAGAGAGAGGA
ACCAGCTACCTACTCAGCTCTTACGCGGTGCGTATGACATCTCTGAAAAGCAATGCTAAGAACATGGTGA
CCAATTCTGTTTTACTAAATGGGCACAGCATGAAGCAGGAAATGGCAATG

ACGCGTACGCGGCCGCTCGAGCAGAACTCATCTCAGAAGAGGATCTGGCAGCAATGATATCCTGGATT
ACAAGGATGACGACGATAAGGTTTAA



[View online »](#)

Protein Sequence: >RC213319 representing NM_002511
 Red=Cloning site Green=Tags(s)

MPSKSLSNLSVTTGANESGSVPEGWERDFLPASDGTTELIVRCVIPSLEYLLIITVGLLGNIMLVKIFIT
 NSAMRSVPNIFISNLAAGDLLLTLTCVPVDASRYFFDEWMFGKVGCKLIPVIQLTSVGVSVFTLTALSAD
 RYRAIVNPMDMQTSALLRRTCVKAMGIWVSVLLAVPEAVFSEVARISSLDNSSFTACIPYPQTDLHPK
 IHSVLIFLVYFLIPLAIIISIIYYCHIAKTLIKSAHNLPGEYNEHTKKQMETRKRRLAKIVLVFVGCIFCWF
 PNHILYMYRSFNNEIDPSLGHMIVTLVARVLSFGNSCVNPFALYLLSEFRRHFNSQLCCGRKSYQERG
 TSYLLSSAVRMTSLKSNKMNMTNSVLLNGHSMKQEMAM

TRTRPLEQKLISEEDLAANDILDYKDDDDKV

Chromatograms: https://cdn.origene.com/chromatograms/mg2477_e07.zip

Restriction Sites: SgfI-MluI

Cloning Scheme:



ACCN: NM_002511

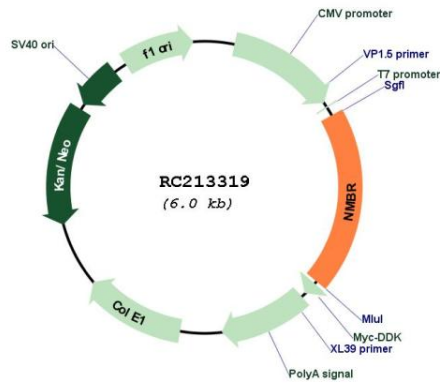
ORF Size: 1170 bp

OTI Disclaimer: Due to the inherent nature of this plasmid, standard methods to replicate additional amounts of DNA in E. coli are highly likely to result in mutations and/or rearrangements. Therefore, OriGene does not guarantee the capability to replicate this plasmid DNA. Additional amounts of DNA can be purchased from OriGene with batch-specific, full-sequence verification at a reduced cost. Please contact our customer care team at custsupport@origene.com or by calling 301.340.3188 option 3 for pricing and delivery.

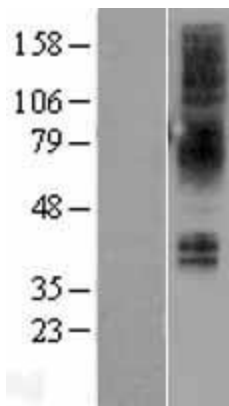
The molecular sequence of this clone aligns with the gene accession number as a point of reference only. However, individual transcript sequences of the same gene can differ through naturally occurring variations (e.g. polymorphisms), each with its own valid existence. This clone is substantially in agreement with the reference, but a complete review of all prevailing variants is recommended prior to use. [More info](#)

OTI Annotation:	This clone was engineered to express the complete ORF with an expression tag. Expression varies depending on the nature of the gene.
Components:	The ORF clone is ion-exchange column purified and shipped in a 2D barcoded Matrix tube containing 10ug of transfection-ready, dried plasmid DNA (reconstitute with 100 ul of water).
Reconstitution Method:	<ol style="list-style-type: none">1. Centrifuge at 5,000xg for 5min.2. Carefully open the tube and add 100ul of sterile water to dissolve the DNA.3. Close the tube and incubate for 10 minutes at room temperature.4. Briefly vortex the tube and then do a quick spin (less than 5000xg) to concentrate the liquid at the bottom.5. Store the suspended plasmid at -20°C. The DNA is stable for at least one year from date of shipping when stored at -20°C.
RefSeq:	NM_002511.4
RefSeq Size:	1352 bp
RefSeq ORF:	1173 bp
Locus ID:	4829
UniProt ID:	P28336
Cytogenetics:	6q24.1
Protein Families:	Druggable Genome, GPCR, Transmembrane
Protein Pathways:	Neuroactive ligand-receptor interaction
MW:	43.3 kDa
Gene Summary:	This gene encodes a 7-transmembrane G protein-coupled receptor that binds neuromedin B, which is a growth factor and mitogen for gastrointestinal epithelial tissue and for normal and neoplastic lung. This receptor may play a role in smooth muscle contraction, neuronal responses, and the regulation of cell growth. Antagonists of this receptor have a potential therapeutic use in inhibiting tumor cell growth. Polymorphisms in this gene may be associated with a susceptibility for schizophrenia. Alternative splicing of this gene results in multiple transcript variants. [provided by RefSeq, Apr 2016]

Product images:



Circular map for RC213319



Western blot validation of overexpression lysate (Cat# [LY400899]) using anti-DDK antibody (Cat# [TA50011-100]). Left: Cell lysates from untransfected HEK293T cells; Right: Cell lysates from HEK293T cells transfected with RC213319 using transfection reagent MegaTran 2.0 (Cat# [TT210002]).