

Product datasheet for **RC213318L4V**

NY-ESO-1 (CTAG1B) (NM_001327) Human Tagged ORF Clone Lentiviral Particle

Product data:

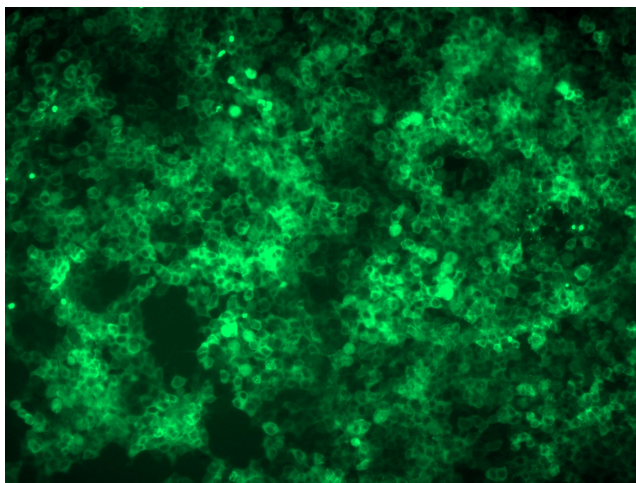
Product Type:	Lentiviral Particles
Product Name:	NY-ESO-1 (CTAG1B) (NM_001327) Human Tagged ORF Clone Lentiviral Particle
Symbol:	CTAG1B
Synonyms:	CT6.1; CTAG; CTAG1; ESO1; LAGE-2; LAGE2B; NY-ESO-1
Mammalian Cell Selection:	Puromycin
Vector:	pLenti-C-mGFP-P2A-Puro (PS100093)
Tag:	mGFP
ACCN:	NM_001327
ORF Size:	540 bp
ORF Nucleotide Sequence:	The ORF insert of this clone is exactly the same as(RC213318).
OTI Disclaimer:	The molecular sequence of this clone aligns with the gene accession number as a point of reference only. However, individual transcript sequences of the same gene can differ through naturally occurring variations (e.g. polymorphisms), each with its own valid existence. This clone is substantially in agreement with the reference, but a complete review of all prevailing variants is recommended prior to use. More info
OTI Annotation:	This clone was engineered to express the complete ORF with an expression tag. Expression varies depending on the nature of the gene.
RefSeq:	NM_001327.1
RefSeq Size:	806 bp
RefSeq ORF:	543 bp
Locus ID:	1485
UniProt ID:	P78358
Cytogenetics:	Xq28
Protein Families:	Druggable Genome
MW:	17.8 kDa



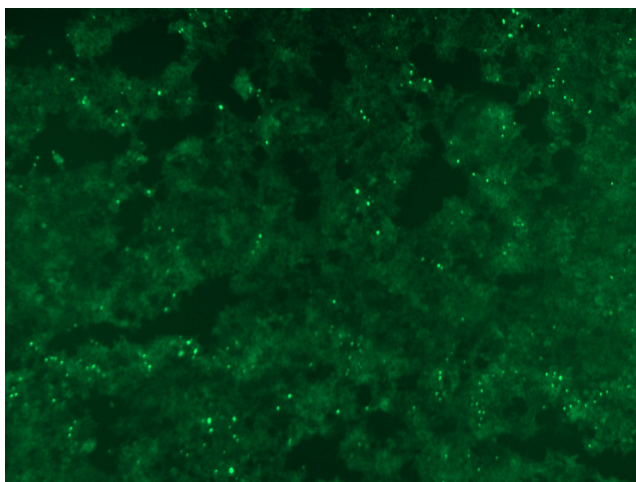
[View online »](#)

Gene Summary:

The protein encoded by this gene is an antigen that is overexpressed in many cancers but that is also expressed in normal testis. This gene is found in a duplicated region of the X-chromosome and therefore has a neighboring gene of identical sequence. [provided by RefSeq, Jan 2012]

Product images:

[RC213318L4] was used to prepare Lentiviral particles using [TR30037] packaging kit. HEK293T cells were transduced with RC213318L4V particle to overexpress human CTAG1B-mGFP fusion protein.



[RC213318L4] was used to prepare Lentiviral particles using [TR30037] packaging kit. HEK293T cells were transduced with RC213318L4V particle to overexpress human CTAG1B-mGFP fusion protein.