

Product datasheet for RC213318

NY-ESO-1 (CTAG1B) (NM_001327) Human Tagged ORF Clone

Product data:

Product Type: Expression Plasmids
Product Name: NY-ESO-1 (CTAG1B) (NM_001327) Human Tagged ORF Clone
Tag: Myc-DDK
Symbol: NY-ESO-1
Synonyms: CT6.1; CTAG; CTAG1; ESO1; LAGE-2; LAGE2B; NY-ESO-1
Mammalian Cell Selection: Neomycin
Vector: pCMV6-Entry (PS100001)
E. coli Selection: Kanamycin (25 ug/mL)
ORF Nucleotide Sequence: >RC213318 representing NM_001327
 Red=Cloning site Blue=ORF Green=Tags(s)

TTTTGTAATACGACTCACTATAGGGCGGCCGGAATTCGTCGACTGGATCCGGTACCGAGGAGATCTGCC
 GCC**CGATCGCC**

ATGCAGGCCGAAGGCCGGGGCACAGGGGTTTCGACGGGCGATGCTGATGGCCAGGAGGCCCTGGCATTCTGATGGCCAGGGGCAATGCTGGCGGCCAGGAGAGCGGGTGCCACGGCGGCAGAGGTCCCGGGGCGCAGGGGCAGCAAGGGCCTCGGGGCCGGGAGGAGCGCCCGCGGGGTCCGCATGGCGGCGGGCTTCAGGGCTGAATGGATGCTGCAGATCGGGGCCAGGGGCCGGAGAGCCGCTGCTTGAGTTCTACCTCGCCATGCCTTTCGCGACACCCATGGAAGCAGAGCTGGCCCGCAGGAGCCTGGCCAGGATGCCCCACCGCTTCCGTGCCAGGGGTGCTTCTGAAGGAGTTCAGTGTGCCGCAACATACTGACTATCCGACTGACTGCTGCA GACCACGCCAACTGCAGCTCTCCATCAGCTCCTGTCTCCAGCAGCTTCCCTGTTGATGTGGATCACGAGTGTCTTCTGCCGTGTTTTGGCTCAGCCTCCCTCAGGGCAGAGGCGC

ACGCGTACGCGGCCGCTCGAGCAGAACTCATCTCAGAAGAGGATCTGGCAGCAAATGATATCCTGGATTACAAGGATGACGACGATAAGGTTTAA

Protein Sequence: >RC213318 representing NM_001327
 Red=Cloning site Green=Tags(s)

MQAEGRGTGGSTGDADGPGGPGIPDGPNGAGGPEAGATGGRGPRGAGAARASGPGGGAPRPHGGAASGLNGCCRCGARGPESRLLLEFYLA MPFATPMEAE LARRSLAQDAPPLPVPGVLLKEFTVSGNILTIRLTAA DHRQLQLSISCLQQLSLLMWITQCFLPVFLAQPPSGQRR

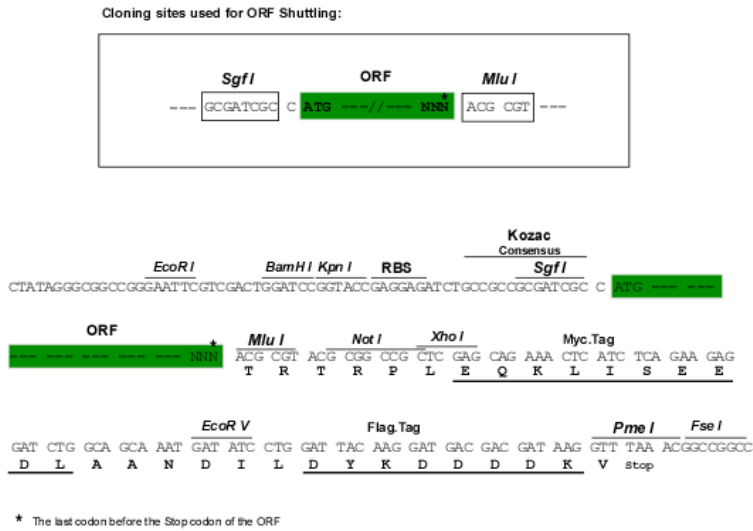
TRTRPLEQKLISEEDLAANDILDYKDDDDKV

Chromatograms: https://cdn.origene.com/chromatograms/mg2573_b01.zip



Restriction Sites: SgfI-MluI

Cloning Scheme:



ACCN: NM_001327

ORF Size: 540 bp

OTI Disclaimer: The molecular sequence of this clone aligns with the gene accession number as a point of reference only. However, individual transcript sequences of the same gene can differ through naturally occurring variations (e.g. polymorphisms), each with its own valid existence. This clone is substantially in agreement with the reference, but a complete review of all prevailing variants is recommended prior to use. [More info](#)

OTI Annotation: This clone was engineered to express the complete ORF with an expression tag. Expression varies depending on the nature of the gene.

Components: The ORF clone is ion-exchange column purified and shipped in a 2D barcoded Matrix tube containing 10ug of transfection-ready, dried plasmid DNA (reconstitute with 100 ul of water).

Reconstitution Method:

1. Centrifuge at 5,000xg for 5min.
2. Carefully open the tube and add 100ul of sterile water to dissolve the DNA.
3. Close the tube and incubate for 10 minutes at room temperature.
4. Briefly vortex the tube and then do a quick spin (less than 5000xg) to concentrate the liquid at the bottom.
5. Store the suspended plasmid at -20°C. The DNA is stable for at least one year from date of shipping when stored at -20°C.

Note: Plasmids are not sterile. For experiments where strict sterility is required, filtration with 0.22um filter is required.

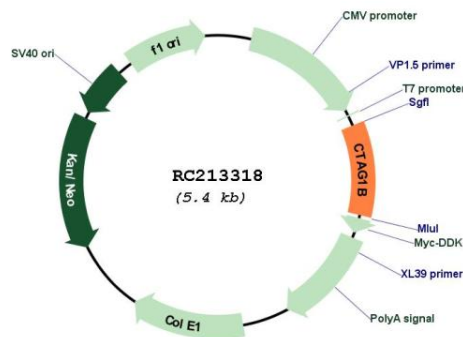
RefSeq: [NM_001327.2](#)

RefSeq Size: 806 bp

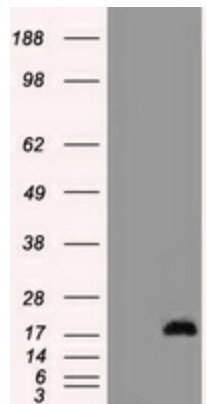
RefSeq ORF: 543 bp

Locus ID: 1485
UniProt ID: [P78358](#)
Cytogenetics: Xq28
Protein Families: Druggable Genome
MW: 17.8 kDa
Gene Summary: The protein encoded by this gene is an antigen that is overexpressed in many cancers but that is also expressed in normal testis. This gene is found in a duplicated region of the X-chromosome and therefore has a neighboring gene of identical sequence. [provided by RefSeq, Jan 2012]

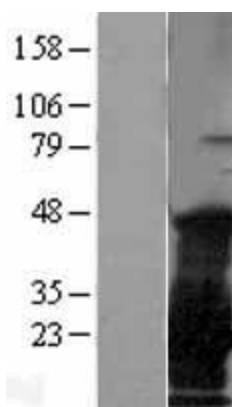
Product images:



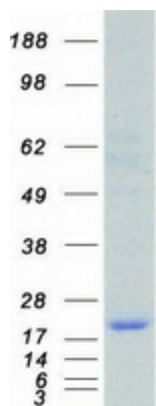
Circular map for RC213318



HEK293T cells were transfected with the pCMV6-ENTRY control (Cat# [PS100001], Left lane) or pCMV6-ENTRY CTAG1B (Cat# RC213318, Right lane) cDNA for 48 hrs and lysed. Equivalent amounts of cell lysates (5 ug per lane) were separated by SDS-PAGE and immunoblotted with anti-CTAG1B (Cat# [TA500528]). Positive lysates [LY400527] (100ug) and [LC400527] (20ug) can be purchased separately from OriGene.



Western blot validation of overexpression lysate (Cat# [LY400527]) using anti-DDK antibody (Cat# [TA50011-100]). Left: Cell lysates from untransfected HEK293T cells; Right: Cell lysates from HEK293T cells transfected with RC213318 using transfection reagent MegaTran 2.0 (Cat# [TT210002]).



Coomassie blue staining of purified CTAG1B protein (Cat# [TP313318]). The protein was produced from HEK293T cells transfected with CTAG1B cDNA clone (Cat# RC213318) using MegaTran 2.0 (Cat# [TT210002]).