

## Product datasheet for **RC213316**

### **FBXW8 (NM\_012174) Human Tagged ORF Clone**

#### **Product data:**

Product Type:	Expression Plasmids
Product Name:	FBXW8 (NM_012174) Human Tagged ORF Clone
Tag:	Myc-DDK
Symbol:	FBXW8
Synonyms:	FBW6; FBW8; FBX29; FBXO29; FBXW6
Mammalian Cell Selection:	Neomycin
Vector:	pCMV6-Entry (PS100001)
E. coli Selection:	Kanamycin (25 ug/mL)



[View online »](#)

**ORF Nucleotide Sequence:**

>RC213316 representing NM\_012174  
 Red=Cloning site Blue=ORF Green=Tags(s)

TTTTGTAATACGACTCACTATAGGGCGGCCGGGAATTCGTCGACTGGATCCGGTACCGAGGAGATCTGCC  
 GCC**CGGATCGCC**

ATGGACGACTACAGCCTGGATGAGTTCCGTCCGGCTGGCAGGAGAGCTGGCGCAGGCCAGGCGCCGA  
 AGAAGCGGCGACGGCCGAGGCTGCCGAGAGCGGGCTCGGCGCCGGAGAATGAAATGAATGATGTGCC  
 TTTCTTTGATATCCAACCTGCCTTACGAATTGGCAATCAATATATTTTCAGTATCTGGACAGAAAAGACTA  
 GGAAGATGTGCACAGGTGAGCAAGACGTGGAAGGTGATTGCAGAGGATGAGGTGCTGTGGTACAGGCTGT  
 GCCAGCAGGAAGGGCACCTTCCGGATAGCAGCATCTCTGACTATTCTTGTGGAAGCTCATCTTCCAAGA  
 GTGCCGAGCCAAGGAACACATGTTACGAACCAACTGGAAGAATCGCAAAGGTGCCGTGAGCGAGCTGGAG  
 CATGTTCTGACACAGTTTGTGTGATGTGCATTCTCACGATGGTGTGGTATTGCGGGATATACATCAG  
 GGGATGTGAGAGTGTGGACACCCGCACCTGGGACTACGTAGCCCCCTTCTGGAATCAGAGGACGAGGA  
 GGATGAGCCTGGAATGCAGCCAAATGTCTCCTTTGTGAGGATAAACAGCTCGTTGGCAGTACGAGCTTAT  
 GAGGATGGGTTTCTTAATATTTGGGATTTAAGGACCGGAAAGTACCCTGTTTCATCGTTTTGAGCAGCATG  
 CAAGAATACAGGCACTAGCCCTCAGCCAGGACGATGCAACCGTGCCACAGCTTCTGCTTTTGTATGTCGT  
 GATGTTATCCCCAATGAGGAGGGTACTGGCAGATAGCTGCGGAATTTGAAAGTCCGAAACTGGTTCAG  
 TACCTTGAATAGTTCAGAAACAGAAAGTACCCTGTGGCAGTAGCCGCTGCTGGAGATCTGATGTACC  
 TGCTCAAAGCCGAAGACTCCGCCAGAACCCTCCTTTACGCCACGGCCCGCTGTACATGTCTAGACGT  
 CTCGGCAACCAAGTTGCTTTTGGTGTACAGGGTCTGGGATGGGTGTACGAAGGAAGCAAGATCCTGGTG  
 TATAGCCTGGAAGCAGGACGCCCTCTTGAAGCTGGTAACGTTCTCCGTGACTTACGTGTGTCAACC  
 TCAGCGACAGCCCTCCCAACCTCATGGTCAAGTGGCAACATGGACGGGAGGGTGAAGATCCAGACCTCCG  
 CAGTGGTAACATCGCCCTGTGCTCTCCGCCATCAGCTCAGGGTCTGCTGTGCAGATGGATGACTGG  
 AAGATCGTCAGTGGAGGCGAGGAAGGCCTGGTGTCCGTGTGGATTATCGGATGAACCAGAACTGTGGG  
 AGGTGTATTCCGGGACCCGGTGCAGCAGTCTCATTGACAGCCACAGCCTCATCACGGCAACGTGCC  
 TTACCAGACGGTAATGCGAAACGCCGACCTGGACAGCTTCACTACTCACAGGAGACACCGGGGCTGATC  
 CGCGCCTATGAGTTTGGGTGGACAGCTGGCCTTCCAGAGCCCTCTCCCTGTCTGCCGTTATCTCTGTG  
 ACGCCATGGCCACTCACTACTACGACCTCGACTGGCCTTCCCTATAACCATGTT

**ACGCGT**ACGCGGCCGCTCGAGCAGAAACTCATCTCAGAAGAGGATCTGGCAGCAAATGATATCTGGATT  
 ACAAGGATGACGACGATAAGGTTTAA

**Protein Sequence:**

>RC213316 representing NM\_012174  
 Red=Cloning site Green=Tags(s)

MDDYSLDEFRRRWQEELAQAQAPKRRRPEAAERRARRPENEMNDVPPFDIQLPYELAINIFQYLDRKEL  
 GRCAQVSKTWKVI AEDEVLYRLLCQQEGHLPDSSI SDYSCWKLIFQECRAKEHMLRTNWKNRKAVSELE  
 HVPDVTLCDVHSHDGVVIAGYTSGDVVRVWDRTRTWYVAPFLESEDEDEPGMQPNVSVFRINSSLA VAAAY  
 EDGFLNIWDLRTGKYPVHRFEHDARIQALALSQDDATVATASAFDVVMLSPNEEGYWQIAAEFEVPLVQ  
 YLEIVPETRRYPVAVAAAGDLMYLLKAEDSARTLLYAHGPPVTCLDV SANQVAFVGVQGLGWVYEGSKILV  
 YSLEAGRLLKLG NVLRDFTCVNLS DSPPNLMVSGNMDGRVRIHDLRSGNIALSLSAHQLRVS AVQMDDW  
 KIVSGGEEGLVSVWDIRMNQKLWEVYSGHPVQHISFSSHSLITANVPYQTVMRNADLDSFTTHRRHRGLI  
 RAYEFAVDQLAFQSPLPVCRSSCDAMATHYYDLALAFPYNHV

**TRTRPLEQKLI**SEEDLAANDILDYKDDDDKV

**Chromatograms:**

[https://cdn.origene.com/chromatograms/mk8024\\_c10.zip](https://cdn.origene.com/chromatograms/mk8024_c10.zip)

**Restriction Sites:**

Sgfl-MluI

**Cloning Scheme:**


**ACCN:** NM\_012174

**ORF Size:** 1596 bp

**OTI Disclaimer:** The molecular sequence of this clone aligns with the gene accession number as a point of reference only. However, individual transcript sequences of the same gene can differ through naturally occurring variations (e.g. polymorphisms), each with its own valid existence. This clone is substantially in agreement with the reference, but a complete review of all prevailing variants is recommended prior to use. [More info](#)

**OTI Annotation:** This clone was engineered to express the complete ORF with an expression tag. Expression varies depending on the nature of the gene.

**Components:** The ORF clone is ion-exchange column purified and shipped in a 2D barcoded Matrix tube containing 10ug of transfection-ready, dried plasmid DNA (reconstitute with 100 ul of water).

- Reconstitution Method:**
1. Centrifuge at 5,000xg for 5min.
  2. Carefully open the tube and add 100ul of sterile water to dissolve the DNA.
  3. Close the tube and incubate for 10 minutes at room temperature.
  4. Briefly vortex the tube and then do a quick spin (less than 5000xg) to concentrate the liquid at the bottom.
  5. Store the suspended plasmid at -20°C. The DNA is stable for at least one year from date of shipping when stored at -20°C.

**RefSeq:** [NM\\_012174.1](#), [NP\\_036306.1](#)

**RefSeq Size:** 4673 bp

**RefSeq ORF:** 1599 bp

**Locus ID:** 26259

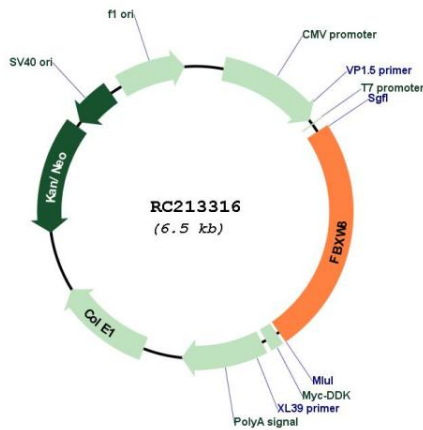
**UniProt ID:** [Q8N3Y1](#)

**Cytogenetics:** 12q24.22

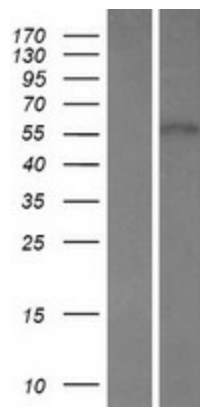
**Protein Families:** Druggable Genome  
**Protein Pathways:** Ubiquitin mediated proteolysis  
**MW:** 60.5 kDa

**Gene Summary:** This gene encodes a member of the F-box protein family, members of which are characterized by an approximately 40 amino acid motif, the F-box. The F-box proteins constitute one of the four subunits of ubiquitin protein ligase complex called SCFs (SKP1-cullin-F-box), which function in phosphorylation-dependent ubiquitination. The F-box proteins are divided into three classes: Fbws containing WD-40 domains, Fbls containing leucine-rich repeats, and Fbxs containing either different protein-protein interaction modules or no recognizable motifs. The protein encoded by this gene contains a WD-40 domain, in addition to an F-box motif, so it belongs to the Fbw class. Alternatively spliced transcript variants encoding distinct isoforms have been identified for this gene. [provided by RefSeq, Jul 2008]

**Product images:**



Circular map for RC213316



Western blot validation of overexpression lysate (Cat# [LY415951]) using anti-DDK antibody (Cat# [TA50011-100]). Left: Cell lysates from untransfected HEK293T cells; Right: Cell lysates from HEK293T cells transfected with RC213316 using transfection reagent MegaTran 2.0 (Cat# [TT210002]).