

## Product datasheet for **RC213315**

### PHF20L1 (NM\_032205) Human Tagged ORF Clone

#### Product data:

|                           |  |
|---------------------------|--|
| Product Type:             | Expression Plasmids                        |
| Product Name:             | PHF20L1 (NM_032205) Human Tagged ORF Clone |
| Tag:                      | Myc-DDK                                    |
| Symbol:                   | PHF20L1                                    |
| Synonyms:                 | CGI-72; TDRD20B                            |
| Mammalian Cell Selection: | Neomycin                                   |
| Vector:                   | pCMV6-Entry (PS100001)                     |
| E. coli Selection:        | Kanamycin (25 ug/mL)                       |



[View online »](#)

**ORF Nucleotide Sequence:**

>RC213315 representing NM\_032205  
 Red=Cloning site Blue=ORF Green=Tags(s)

TTTTGTAATACGACTCACTATAGGGCGGCCGGAATTCGTCGACTGGATCCGGTACCGAGGAGATCTGCC  
 GCC**CGGATCGCC**

ATGAGTAAAAAGCCCCAAATCGCCTGGAATCACTTTTGAGATTGGTGCTCGTTTGGAGGCACTGGACT  
 ACTTACAAAAATGGTATCCATCACGAATTGAAAAAATTGACTATGAGGAGGCAAGATGTTGGTCCATTT  
 TGAGCGCTGGAGTCATCGTTATGATGAGTGGATTTACTGGGATAGCAATAGATTGCGACCCCTTGAGAGA  
 CCAGCACTAAGAAAAAGAGGGCTAAAAGATGAGGAAGATTTCTTTGATTTTAAAGCTGGAGAAGAAGTTC  
 TGGCTCGTTGGACAGACTGTCGCTATTACCCTGCCAAGATTGAAGCAATTAACAAAGAAGGAACATTTAC  
 AGTTCAGTTTTATGATGGAGTAATTCGTTGTTTAAAAAGAATGCACATTAAGCCATGCCCGAGGATGCT  
 AAGGGGCAAGTGAATCCAGCATCCACTAAGCTGGTGTGTCTATCGACCCAGCTGGATCGTGTAAACC  
 AGTCTATGGGAAGTGAAGATTGGATAGCTTTAGTCAAAGCAGCTGCTGCAGCTGCAGCCAAGAACAAAAC  
 AGGGAGTAAACCTCGAACAGCGCTAACAGCAATAAAGATAAGGATAAAGATGAGAGAAAGTGGTTTAAA  
 GTACCTTCAAAGAAGGAGGAAACTTCAACTTGTATAGCCACACCAGACGTAGAGAAGAAGGAAGATCTGC  
 CTACATCTAGTGAACATTTGGACTTCATGTAGAGAACGTTCCAAAGATGGTCTTTCCACAGCCAGAGAG  
 CACATTATCAAACAAGAGGAAAAATAATCAAGGCAACTCGTTTCAGGCAAAGAGAGCTCGACTTAACAAG  
 ATTACTGGTTTGTGGCATCAAAGCTGTTGGGGTTGATGGTGTCTGAAAAAAGGAAGACTACAATGAAA  
 CAGCTCCAATGCTGGAGCAGGCGATTTACCTAAACCTCAAAGTCAGAAAAAAAATGAAGCTGACATTAG  
 CAGTTCTGCCAACACTCAGAACTGCACTGTTATCCTCAACTTGTCTTCAGGGAAGGCTCGCAGCAAG  
 AAATGCAACATGAATCTGGAGATCTTCTGGGTGATAAAAACCCCTAAATCACCACCTTTCCCCAGAAT  
 TAATACAAGTCGAGGATTTGACGCTTGTATCTCAGCTTTCTTCTCAGTGATAAAATAAACTAGTCTCC  
 ACAGCCTGTGAATCCCCCTAGACCTTTCAAGCATAGTGAGCGGAGAAGAAGATCTCAGCGTTTAGCCACC  
 TTACCCATGCCTGATGATTCTGTAGAAAAGGTTTCTTCTCCCTCTCCAGCCACTGATGGGAAAGTATTCT  
 CCATCAGTTCTCAAATCAGCAAGAATCTCAGTACCAGAGGTGCCTGATGTTGCACATTTGCCACTTGA  
 GAAGCTGGGACCCTGTCTCCCTCTTGACTTAAGTCGTGGTTTCAAGATTACAGCACCCGTAGCCTCAGAT  
 TCCTCTTACCATAATGAATGTCCAGGGCAGAAAAAGAGGATACACAGATGCTTCCAAATCCTTCTTCCA  
 AAGCAATAGCTGATGGAAGAGGAGCTCCAGCAGCAGGAATATCGAAAAACAGAAAAAAGTGAATTT  
 GGAAGACAAAAGCTCAACAGCATTGGTATCAGGAGTTGGGATTTCTCAGCACTGCTAATGAAGATCCCC  
 TCTTATAGTCCAATAAGCTTATCAGGACTTCCAGAGTCA

**ACGCGT**ACGCGGCCGCTCGAGCAGAACTCATCTCAGAAGAGGATCTGGCAGCAAATGATATCCTGGATT  
 ACAAGGATGACGACGATAAGGTTTAA

**Protein Sequence:**

>RC213315 representing NM\_032205  
 Red=Cloning site Green=Tags(s)

MSKPPNRPGITFEIGARLEALDYLQKWYPSRIEKIDYEEGKMLVHFERWSHRYDEWIYWDSNRLRPLER  
 PALRKEGLKDEEDFFDFKAGEEVLARWTDCRYYPKIEAINKEGFTTVQFYDGVIRCLKRMHIKAMPEDA  
 KGQVKSQHPLSWCCPIDPAGSCNQSMGSEDWIALVKAASAAAANKTGSKPRTSANSNKDKDKDERKWFK  
 VPSKKEETSTCIATPDVEKKEDLPTSSETFGLHVENVPKMVFPQPESTLSNKRKNNQGNFQAKRARLNK  
 ITGLLASKAVGVDGAEEKEDYNETAPMLEQAISPQPQSQKNEADISSANTQKPALLSSTLSSGKARSK  
 KCKHESGDSSGCIKPPKSPLSPELIQVEDLTLVSQSSSVINKTSPPQPVNPPRPFKHSERRRRRSQRLAT  
 LPMPDDSVKVSPPSPATDGKVFSSSQNQESSVPEVPDVAHLPLEKLGPCPLDL SRGSEVTAPVASD  
 SSYRNECPRAEKEDTQMLPNPSSKAIADGRGAPAAAGISKTEKKVKLEDKSSTAFGIRSWDF SALLMKIP  
 SYSPISLSGLPES

**TR**TRPLEQKLISEEDLAANDILDYKDDDDKV

**Chromatograms:**

[https://cdn.origene.com/chromatograms/mk8067\\_h09.zip](https://cdn.origene.com/chromatograms/mk8067_h09.zip)

**Restriction Sites:**

Sgfl-Mlul

Cloning Scheme:



ACCN: NM\_032205

ORF Size: 1719 bp

OTI Disclaimer: The molecular sequence of this clone aligns with the gene accession number as a point of reference only. However, individual transcript sequences of the same gene can differ through naturally occurring variations (e.g. polymorphisms), each with its own valid existence. This clone is substantially in agreement with the reference, but a complete review of all prevailing variants is recommended prior to use. [More info](#)

OTI Annotation: This clone was engineered to express the complete ORF with an expression tag. Expression varies depending on the nature of the gene.

Components: The ORF clone is ion-exchange column purified and shipped in a 2D barcoded Matrix tube containing 10ug of transfection-ready, dried plasmid DNA (reconstitute with 100 ul of water).

- Reconstitution Method:
1. Centrifuge at 5,000xg for 5min.
  2. Carefully open the tube and add 100ul of sterile water to dissolve the DNA.
  3. Close the tube and incubate for 10 minutes at room temperature.
  4. Briefly vortex the tube and then do a quick spin (less than 5000xg) to concentrate the liquid at the bottom.
  5. Store the suspended plasmid at -20°C. The DNA is stable for at least one year from date of shipping when stored at -20°C.

RefSeq: [NM\\_032205.3](#), [NP\\_115581.3](#)

RefSeq Size: 2286 bp

RefSeq ORF: 1721 bp

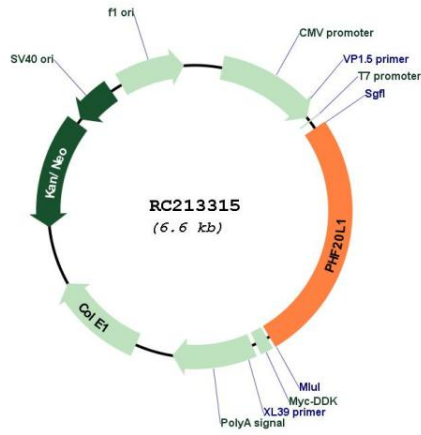
Locus ID: 51105

Cytogenetics: 8q24.22

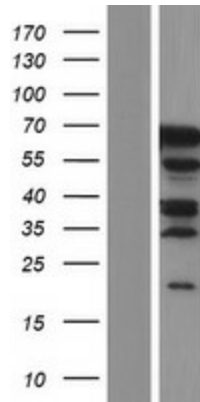
Protein Families: Druggable Genome, Transcription Factors

MW: 63.3 kDa

**Product images:**



Circular map for RC213315



Western blot validation of overexpression lysate (Cat# [LY410271]) using anti-DDK antibody (Cat# [TA50011-100]). Left: Cell lysates from untransfected HEK293T cells; Right: Cell lysates from HEK293T cells transfected with RC213315 using transfection reagent MegaTran 2.0 (Cat# [TT210002]).