

Product datasheet for RC213313L4

NFkB p100 / p52 (NFKB2) (NM_002502) Human Tagged Lenti ORF Clone

Product data:

| | |
|---------------------------|------------------------------------------------------------------|
| Product Type: | Expression Plasmids |
| Product Name: | NFkB p100 / p52 (NFKB2) (NM_002502) Human Tagged Lenti ORF Clone |
| Tag: | mGFP |
| Symbol: | NFkB p100 / p52 |
| Synonyms: | CVID10; H2TF1; LYT-10; LYT10; NF-kB2; p49/p100; p52; p100 |
| Mammalian Cell Selection: | Puromycin |
| Vector: | pLenti-C-mGFP-P2A-Puro (PS100093) |
| E. coli Selection: | Chloramphenicol (34 ug/mL) |
| ORF Nucleotide Sequence: | The ORF insert of this clone is exactly the same as(RC213313). |
| Restriction Sites: | SgfI-MluI |
| Cloning Scheme: | |

Cloning sites used for ORF Shuttling:



* The last codon before the Stop codon of the ORF.

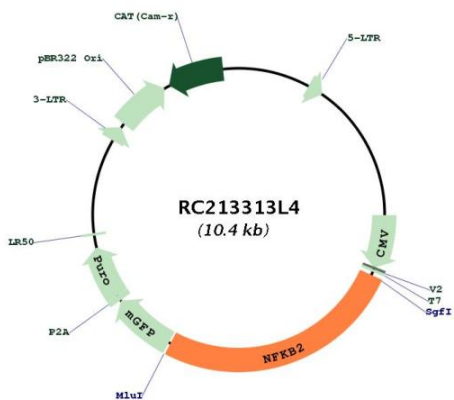
| | |
|-----------|-----------|
| ACCN: | NM_002502 |
| ORF Size: | 2697 bp |



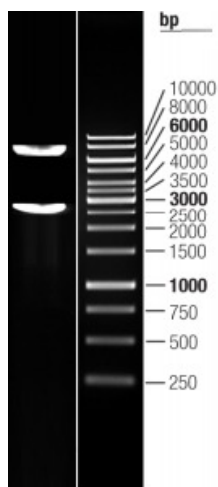
[View online >](#)

| | |
|-------------------------------|-------------------------------------------------------------------------------------------------------------------------------------------------------------------------------------------------------------------------------------------------------------------------------------------------------------------------------------------------------------------------------------------------------------------------------------------------------------------------------------------------------------------------------------------------------------------------------------------------------------------------------------------------------------------------------------------------------------------------------------------------------------------------------------------------|
| OTI Disclaimer: | The molecular sequence of this clone aligns with the gene accession number as a point of reference only. However, individual transcript sequences of the same gene can differ through naturally occurring variations (e.g. polymorphisms), each with its own valid existence. This clone is substantially in agreement with the reference, but a complete review of all prevailing variants is recommended prior to use. More info |
| OTI Annotation: | This clone was engineered to express the complete ORF with an expression tag. Expression varies depending on the nature of the gene. |
| Components: | The ORF clone is ion-exchange column purified and shipped in a 2D barcoded Matrix tube containing 10ug of transfection-ready, dried plasmid DNA (reconstitute with 100 ul of water). |
| Reconstitution Method: | <ol style="list-style-type: none">1. Centrifuge at 5,000xg for 5min.2. Carefully open the tube and add 100ul of sterile water to dissolve the DNA.3. Close the tube and incubate for 10 minutes at room temperature.4. Briefly vortex the tube and then do a quick spin (less than 5000xg) to concentrate the liquid at the bottom.5. Store the suspended plasmid at -20°C. The DNA is stable for at least one year from date of shipping when stored at -20°C. |
| RefSeq: | NM_002502.2 |
| RefSeq Size: | 3001 bp |
| RefSeq ORF: | 2700 bp |
| Locus ID: | 4791 |
| UniProt ID: | Q00653 |
| Cytogenetics: | 10q24.32 |
| Domains: | RHD, DEATH, ANK, IPT |
| Protein Families: | Transcription Factors |
| Protein Pathways: | MAPK signaling pathway, Pathways in cancer |
| MW: | 96.7 kDa |
| Gene Summary: | This gene encodes a subunit of the transcription factor complex nuclear factor-kappa-B (NFkB). The NFkB complex is expressed in numerous cell types and functions as a central activator of genes involved in inflammation and immune function. The protein encoded by this gene can function as both a transcriptional activator or repressor depending on its dimerization partner. The p100 full-length protein is co-translationally processed into a p52 active form. Chromosomal rearrangements and translocations of this locus have been observed in B cell lymphomas, some of which may result in the formation of fusion proteins. There is a pseudogene for this gene on chromosome 18. Alternative splicing results in multiple transcript variants. [provided by RefSeq, Dec 2013] |

Product images:



Circular map for RC213313L4



Double digestion of RC213313L4 using SgfI and MluI