

Product datasheet for **RC213313**

NFkB p100 / p52 (NFKB2) (NM_002502) Human Tagged ORF Clone

Product data:

| | |
|---------------------------|------------------------------------------------------------|
| Product Type: | Expression Plasmids |
| Product Name: | NFkB p100 / p52 (NFKB2) (NM_002502) Human Tagged ORF Clone |
| Tag: | Myc-DDK |
| Symbol: | NFkB p100 / p52 |
| Synonyms: | CVID10; H2TF1; LYT-10; LYT10; NF-kB2; p49/p100; p52; p100 |
| Mammalian Cell Selection: | Neomycin |
| Vector: | pCMV6-Entry (PS100001) |
| E. coli Selection: | Kanamycin (25 ug/mL) |



[View online »](#)

ORF Nucleotide
Sequence:

>RC213313 representing NM_002502.

Blue=ORF Red=Cloning site Green=Tag(s)

```
GCTCGTTTAGTGAACCGTCAGAATTTTGTAAACGACTCACTATAGGGCGGCCGGGAATTCGTGACTG
GATCCGGTACCGAGGAGATCTGCCGCCCGCATCGCC
ATGGAGAGTTGCTACAACCCAGGTTGGATGGTATTATTGAATATGATGATTTCAAATTGAACTCCTCC
ATTGTGGAACCCAAGGAGCCAGCCAGAAACAGCTGATGGCCCTACCTGGTGATCGTGAACAGCCT
AAGCAGAGAGGCTTTCGATTTTCGATATGGCTGTGAAGGCCCTCCATGGAGGACTGCCCGTGCCTCC
AGTGAGAAGGGCCGAAAGACCTATCCACTGTCAAGATCTGTAACACGAGGGACAGCCAAAGATCGAG
GTGGACCTGGTAACACACAGTGACCCACCTCGTGCTCATGCCACAGTCTGGTGGCAAGCAATGCTCG
GAGCTGGGGATCTGCGCCGTTTCTGTGGGGCCCAAGGACATGACTGCCCAATTTAACAACCTGGGTGTC
CTGCATGTGACTAAGAAGAACATGATGGGGACTATGATACAAAACTTACAGGCGAGCGGCTCCGCTCT
AGGCCCCAGGGCCTTACGGAGGCCGAGCAGCGGGAGCTGGAGCAAGAGGCCAAAGAAGTGAAGAAGTG
ATGGATCTGAGTATAGTGCGGCTGCGCTTCTCTGCCTTCTTAGAGCCAGTATGGCTCCTTCTCCCTG
CCCCTGAAGCCAGTCATCTCCAGCCCATCCATGACAGCAAATCTCCGGGGCATCAAACCTGAAGATT
TCTCGAATGGACAAGACAGCAGGCTCTGTGCGGGTGGAGATGAAGTTTATCTGCTTTGTGACAAGGTG
CAGAAAGATGACATTGAGGTTCCGTTCTATGAGGATGATGAGAATGGATGGCAGGCTTTGGGGACTTC
TCTCCACAGATGTGCATAAACAGTATGCCATTGTGTTCCGGACACCCCTATCACAAGATGAAGATT
GAGCGGCTGTAAACAGTGTTCGCAACTGAAACGCAAGCGAGGAGGGGACGTGTCTGATTTCAAACAG
TTCACCTATTACCTCTGGTGAAGACAAGGAAGAGGTGCAGCGGAAGCGGAGGAAGGCCTTGCCACC
TTCTCCAGCCCTTCGGGGTGGCTCCACATGGTGGAGGCTCTGGGGTGCAGCCGGGGCTACGGA
GGAGCTGGAGGAGGTGGCAGCCTCGGTTTCTCCCTCCTCCCTGGCCTACAGCCCTACCAGTCCGGC
GCGGGCCCATGGGCTGCTACCCGGGAGCGGGGCGGCAGATGGCCGCCACGTTGCCAGCCAGG
GACTCCGGGGAGGAAGCCGCGGAGCCGAGCGCCCTCCAGGACCCCAAGTGGCAGCCGAGGCCCG
GAGATGCTGCAGCGAGCTCGAGAGTACAACGCGCGCTGTTCCGGCTGGCGCAGCGCAGCCCGAGCC
CTACTCGACTACGGCTCACCGCGGACGCGCGCTGCTGGCGGACAGCGCCACTGCTGACGGCG
CAGGACGAGAACGGAGACACCCACTGCACCTAGCCATCATCCACGGGACAGCAGTGTCTATTGAGCAG
ATAGTCTATGTATCCACCAGCCAGGACCTCGGCGTTGTCAACCTCACCAACCACCTGCACCAGACG
CCCCTGCACCTGGCGGTGATCACGGGCGAGCAGTGTGGTGGAGCTTTCTGCTGCGGGTAGGTGCAGAC
CCAGCTCTGCTGGATCGGCATGGAGACTCAGCCATGCATCTGGCGTGGCGGAGGCGCTGGTCTCT
GAGCTGCTGCGTGCAGTCTTCCAGAGTGGAGCTCTGCTGTGCCAGCTGTTGCATATGCCTGACTTT
GAGGGACTGTATCCAGTACACCTGGCGGTCCGAGCCCAAGCCCTGAGTGCCTGGATCTGCTGGTGGAC
AGTGGGGCTGAAGTGGAGGCCACAGAGCGGCAGGGGGACGAACAGCCTTGCATCTAGCCACAGAGATG
GAGGAGCTGGGGTTGGTCAACCTCTGGTCAACAGCTCCGGGCAACGTGAACGCTCGCACCTTTGCG
GGAAACACACCCCTGCACCTGGCAGTGGACTGGGGTACCCGACCCCTACCCGCTCCTTCTGAAGGCT
GGTGTGACATCCATGCTGAAAACGAGGAGCCCTGTGCCACTGCCTTACCCCTACCTCTGATAGC
GACTCGGACTCTGAAGGGCTGAGAAGGACACCCGAAGCAGCTCCGGGGCCACAGCCTTTGACCTC
ACTTGCAGCACCAGGTGAAGACCTTGTGCTAAATGCTGCTCAGAACACCATGGAGCCACCCCTGACC
CCGCCAGCCAGCAGGGCCGGACTGTCACTTGGTGATACAGCTTGCAGAACCTGGAGCAGCTGCTA
GACGGGCCAAGCCAGGGCAGCTGGGACAGCTGGCAGAGCTGCGGAGCTGGGGCTGCCAGCCTGTTAGAC
ACGTACCAGACAGACAACCTCACCAAGTGGCAGCCTCTGCGCAGCTACGAGCTGGCTGGCGGGACCTG
GCAGGTCTACTGGAGGCCCTGTCTGACATGGGCCTAGAGGAGGGAGTGGGCTGCTGAGGGTCCAGAA
ACCCGAGACAAGCTGCCAGCACAGAGGTGAAGGAAGACAGTGCCTACGGGAGCCAGTCACTGGAGCAG
GAGGCAGAGAAGCTGGGCCACCCCTGAGCCACCAGGAGGGCTCTGCCACGGGACCCCAAGCCTCAG
GTGCAC
ACGGTACGCGGCCGCTCGAGCAGAACTCATCTCAGAAGAGGATCTGGCAGCAAATGATATCTGGAT
TACAAGGATGACGACGATAAGGTTAAACGGCCGCGC
```

Protein Sequence: >Peptide sequence encoded by RC213313
 Blue=ORF Red=Cloning site Green=Tag(s)

MESCYNPLDGIIEYDDFKLNSSIVEPKEPAPETADGPYLVIVEQPKQGRFRFRYGECEGSPSHGGLPGAS
 SEKGRKTYPTVKICNYEGPAKIEVDLVTHSDPPRAHAHSLVGKQCSELGICAVSVGPKDMTAQFNNLGV
 LHVTKKNMGMITQKLQRQLRSRPOQLTEAEQRELEQEAKELKKVMDLSIVLRFSAFLRASDGSFSL
 PLKPVISQPIHDSKSPGASNLKISRMDKTAGSVRGGDEVYLLCDKVQKDDIEVRFYEDDENGWQAFGDF
 SPTDVHKQYAIIVFRTPPYHKMKIERPVTVFLQLKRKRGDVSDSKQFTYYPLVEDKEEVQRKRKALPT
 FSQPFGGGSHMGGGSGGAAGGYGGAGGGGSLGFFPSSLAYSQYQSGAGPMGCYPPGGGGAQAATVPSR
 DSGEEAAEPSAPSRTPQCEPQAPPEMLQRAREYNARLFGLAQRSARALLDYGTADARALLAGQRHLLTA
 QDENGDTPLHLAIHGTQSVIEQIVVYIHHAQDLGVVNLTNHLHQTPLHLAVITGQTSVVSFLLRVGAD
 PALLDRHGDSAMHLALRAGAPPELLRALLQSGAPAVPQLLHMPDFEGLYPVHLAVRARSPECLDLLVD
 SGAEVEATERQGGRTALHLATEMEELGLVTHLVTKLRANVNARTFAGNTPLHLAAGLGYPTLTRLLKA
 GADIHAENEEPLCPLSPPTSDSDSDSEGPEKDRSSFRGHTPLDLTCS TKVKTLLLNAAQNTMEPPLT
 PPSAPGGLSLGDTALQNLQQLLDGPEAQGSAELAERLGLRSLVDTYRQTTSPSGLLRSYELAGGDL
 AGLLEALSDMGLEEGVRLLRGPETRDKLPSTEVKEDSAYGSQSVEQEAELGPPPEPPGGLCHGHPQPQ
 VH
 TRTRPLEQKLISEEDLAANDILDYKDDDDKV

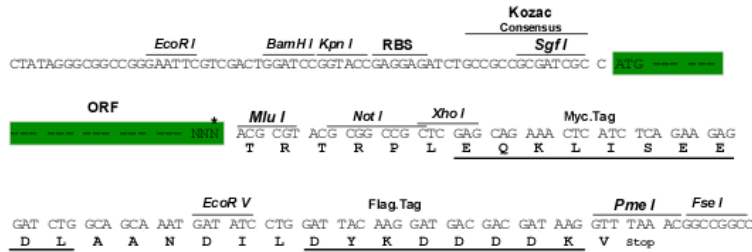
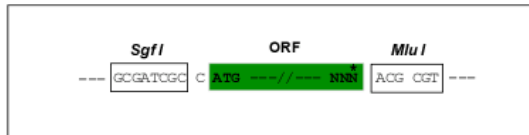
Recombinant protein using RC213313 also available, [TP313313](#)

Chromatograms: https://cdn.origene.com/chromatograms/mk6205_c02.zip

Restriction Sites: SgfI-MluI

Cloning Scheme:

Cloning sites used for ORF Shuttling:



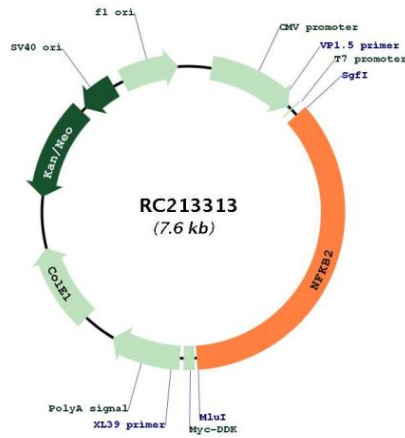
* The last codon before the Stop codon of the ORF

| | |
|-------------------------------|-------------------------------------------------------------------------------------------------------------------------------------------------------------------------------------------------------------------------------------------------------------------------------------------------------------------------------------------------------------------------------------------------------------------------------------------------------------------------------------------------------------------|
| ACCN: | NM_002502 |
| ORF Size: | 2697 bp |
| OTI Disclaimer: | The molecular sequence of this clone aligns with the gene accession number as a point of reference only. However, individual transcript sequences of the same gene can differ through naturally occurring variations (e.g. polymorphisms), each with its own valid existence. This clone is substantially in agreement with the reference, but a complete review of all prevailing variants is recommended prior to use. More info |
| OTI Annotation: | This clone was engineered to express the complete ORF with an expression tag. Expression varies depending on the nature of the gene. |
| Components: | The ORF clone is ion-exchange column purified and shipped in a 2D barcoded Matrix tube containing 10ug of transfection-ready, dried plasmid DNA (reconstitute with 100 ul of water). |
| Reconstitution Method: | <ol style="list-style-type: none">1. Centrifuge at 5,000xg for 5min.2. Carefully open the tube and add 100ul of sterile water to dissolve the DNA.3. Close the tube and incubate for 10 minutes at room temperature.4. Briefly vortex the tube and then do a quick spin (less than 5000xg) to concentrate the liquid at the bottom.5. Store the suspended plasmid at -20°C. The DNA is stable for at least one year from date of shipping when stored at -20°C. |
| Note: | Plasmids are not sterile. For experiments where strict sterility is required, filtration with 0.22um filter is required. |
| RefSeq: | NM_002502.6 |
| RefSeq Size: | 3001 bp |
| RefSeq ORF: | 2700 bp |
| Locus ID: | 4791 |
| UniProt ID: | Q00653 |
| Cytogenetics: | 10q24.32 |
| Domains: | RHD, DEATH, ANK, IPT |
| Protein Families: | Transcription Factors |
| Protein Pathways: | MAPK signaling pathway, Pathways in cancer |
| MW: | 96.7 kDa |

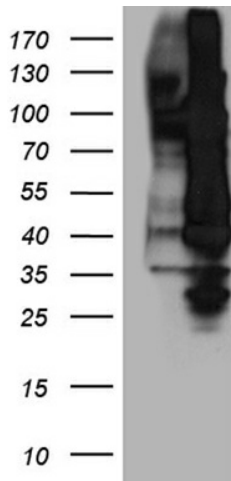
Gene Summary:

This gene encodes a subunit of the transcription factor complex nuclear factor-kappa-B (NFkB). The NFkB complex is expressed in numerous cell types and functions as a central activator of genes involved in inflammation and immune function. The protein encoded by this gene can function as both a transcriptional activator or repressor depending on its dimerization partner. The p100 full-length protein is co-translationally processed into a p52 active form. Chromosomal rearrangements and translocations of this locus have been observed in B cell lymphomas, some of which may result in the formation of fusion proteins. There is a pseudogene for this gene on chromosome 18. Alternative splicing results in multiple transcript variants. [provided by RefSeq, Dec 2013]

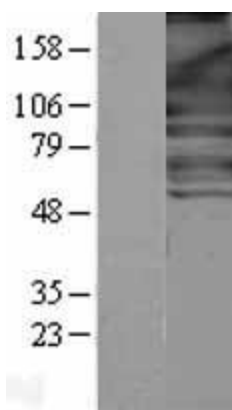
Product images:



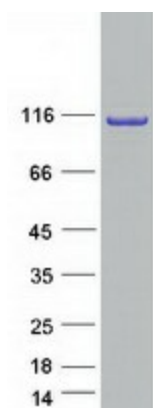
Circular map for RC213313



HEK293T cells were transfected with the pCMV6-ENTRY control (Cat# [PS100001], Left lane) or pCMV6-ENTRY NFKB2 (Cat# RC213313, Right lane) cDNA for 48 hrs and lysed. Equivalent amounts of cell lysates (5 ug per lane) were separated by SDS-PAGE and immunoblotted with anti-NFKB2 antibody (Cat# [TA890136]). Positive lysates [LY400895] (100ug) and [LC400895] (20ug) can be purchased separately from OriGene.



Western blot validation of overexpression lysate (Cat# [LY400895]) using anti-DDK antibody (Cat# [TA50011-100]). Left: Cell lysates from untransfected HEK293T cells; Right: Cell lysates from HEK293T cells transfected with RC213313 using transfection reagent MegaTran 2.0 (Cat# [TT210002]).



Coomassie blue staining of purified NFKB2 protein (Cat# [TP313313]). The protein was produced from HEK293T cells transfected with NFKB2 cDNA clone (Cat# RC213313) using MegaTran 2.0 (Cat# [TT210002]).