

Product datasheet for **RC213304**

SF2 (SRSF1) (NM_001078166) Human Tagged ORF Clone

Product data:

Product Type: Expression Plasmids
Product Name: SF2 (SRSF1) (NM_001078166) Human Tagged ORF Clone
Tag: Myc-DDK
Symbol: SF2
Synonyms: ASF; SF2; SF2p33; SFRS1; SRp30a
Mammalian Cell Selection: Neomycin
Vector: pCMV6-Entry (PS100001)
E. coli Selection: Kanamycin (25 ug/mL)
ORF Nucleotide Sequence: >RC213304 representing NM_001078166
 Red=Cloning site Blue=ORF Green=Tags(s)

TTTTGTAATACGACTCACTATAGGGCGCCGGGAATTCGTCGACTGGATCCGGTACCGAGGAGATCTGCC
 GCC**CGATCGCC**

ATGTCGGGAGGTGGTGTGATTTCGTGGCCCCGAGGAACAACGATTGCCGCATCTACGTGGGTAACCTAC
 CTCCAGACATCCGAACCAAGGACATTGAGGACGTGTTCTACAAATACGGCGCTATCCGCGACATCGACCT
 CAAGAATCGCCGGGGGACCGCCCTTCGCCTTCGTTGAGTTCGAGGACCCGCGAGACGCGGAAGACGCG
 GTGTATGGTCGCGACGGCTATGATTACGATGGTACCGTCTCGGGTGGAGTTTCTCGAAGCGGCCGTG
 GAACAGGCCGAGGCGCGGGGGTGGAGGTGGCGGAGCTCCCGAGGTCGCTATGGCCCCCATCCAG
 GCGGTCTGAAAACAGAGTGGTTGTCTCTGGACTGCCTCCAAGTGAAGTTGGCAGGATTTAAAGGATCAC
 ATGCGTGAAGCAGGTGATGTATGTTATGCTGATGTTTACCGAGATGGCACTGGTGTGCTGGAGTTTGTAC
 GGAAAGAAGATATGACCTATGCAGTTTCAAACTGGATAACACTAAGTTTAGATCTCATGAGGTAGGTTA
 TACACGTATTCTTTCTTTGACCAGAATTGGATACAGTGGTCT

ACGCGTACGCGGCCGCTCGAGCAGAACTCATCTCAGAAGAGGATCTGGCAGCAATGATATCCTGGATT
 ACAAGGATGACGACGATAAGGTTTAA

Protein Sequence: >RC213304 representing NM_001078166
 Red=Cloning site Green=Tags(s)

MSGGGVIRGPAGNDCRIYVGNLPPDIRTKDIEDVFYKYGAIRDIDLKNRRGGPPFAFVEFEDPRDAEDA
 VYGRDGYDYDGYRLRVEFPRSGRGTGRGGGGGGGAPRGRYGPSSRRSENRVVSVGLPPSGSWQDLKDH
 MREAGDVCYADVYRDGTGVVEFVRKEDMTYAVRKLDNTRKFRSHEVGYTRILFFDQNWIQWS

TRTRPLEQKLISEEDLAANDILDYKDDDDKV



Chromatograms: https://cdn.origene.com/chromatograms/mg3202_b06.zip

Restriction Sites: SgfI-MluI

Cloning Scheme:



ACCN: NM_001078166

ORF Size: 603 bp

OTI Disclaimer: The molecular sequence of this clone aligns with the gene accession number as a point of reference only. However, individual transcript sequences of the same gene can differ through naturally occurring variations (e.g. polymorphisms), each with its own valid existence. This clone is substantially in agreement with the reference, but a complete review of all prevailing variants is recommended prior to use. [More info](#)

OTI Annotation: This clone was engineered to express the complete ORF with an expression tag. Expression varies depending on the nature of the gene.

Components: The ORF clone is ion-exchange column purified and shipped in a 2D barcoded Matrix tube containing 10ug of transfection-ready, dried plasmid DNA (reconstitute with 100 ul of water).

Reconstitution Method:

1. Centrifuge at 5,000xg for 5min.
2. Carefully open the tube and add 100ul of sterile water to dissolve the DNA.
3. Close the tube and incubate for 10 minutes at room temperature.
4. Briefly vortex the tube and then do a quick spin (less than 5000xg) to concentrate the liquid at the bottom.
5. Store the suspended plasmid at -20°C. The DNA is stable for at least one year from date of shipping when stored at -20°C.

RefSeq: [NM_001078166.2](#)

RefSeq Size: 5668 bp

RefSeq ORF: 606 bp

Locus ID: 6426

UniProt ID: [Q07955](#)

Cytogenetics: 17q22

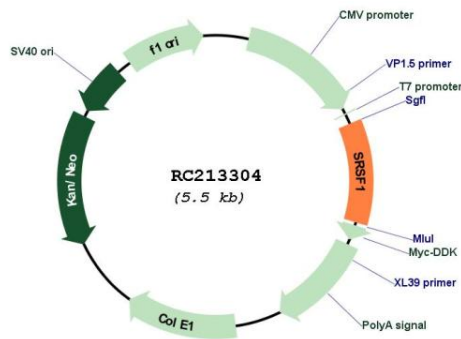
Protein Families: Stem cell - Pluripotency

Protein Pathways: Spliceosome

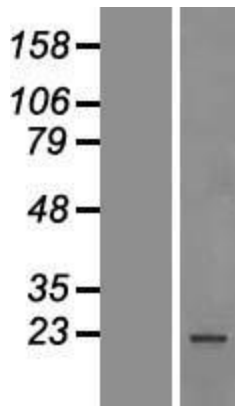
MW: 22.3 kDa

Gene Summary: This gene encodes a member of the arginine/serine-rich splicing factor protein family. The encoded protein can either activate or repress splicing, depending on its phosphorylation state and its interaction partners. Multiple transcript variants have been found for this gene. There is a pseudogene of this gene on chromosome 13. [provided by RefSeq, Jun 2014]

Product images:



Circular map for RC213304



Western blot validation of overexpression lysate (Cat# [LY421492]) using anti-DDK antibody (Cat# [TA50011-100]). Left: Cell lysates from untransfected HEK293T cells; Right: Cell lysates from HEK293T cells transfected with RC213304 using transfection reagent MegaTran 2.0 (Cat# [TT210002]).