

Product datasheet for RC213301

LECT1 (CNMD) (NM_007015) Human Tagged ORF Clone

Product data:

Product Type:	Expression Plasmids
Product Name:	LECT1 (CNMD) (NM_007015) Human Tagged ORF Clone
Tag:	Myc-DDK
Symbol:	LECT1
Synonyms:	BRICD3; CHM-I; CHM1; LECT1; MYETS1
Mammalian Cell Selection:	Neomycin
Vector:	pCMV6-Entry (PS100001)
E. coli Selection:	Kanamycin (25 ug/mL)
ORF Nucleotide Sequence:	>RC213301 ORF sequence Red=Cloning site Blue=ORF Green=Tags(s)

TTTTGTAATACGACTCACTATAGGGCGGCCGGAATTCGTCGACTGGATCCGGTACCGAGGAGATCTGCC
GCC**CGATCGCC**

ATGACAGAGAAGTCCGACAAAGTCCCATTGCCCTGGTGGGACCTGATGACGTGGAATTCTGCAGCCCC
CGGCGTACGCTACGCTGACGGTGAAGCCCTCCAGCCCCGCGGGCTGCTCAAGGTGGGAGCCGTGGTCT
CATTTCCGGAGCTGTGCTGCTCTTTGGGGCCATCGGGCCTTCTACTTCTGGAAGGGGAGCGACAGT
CACATTTACAATGTCCATTACACCATGAGTATCAATGGGAAATTACAAGATGGGTCAATGGAATAGACG
CTGGGAACAACCTTGAGACCTTTAAAATGGGAAGTGGAGCTGAAGAAGCAATTGCAGTTAATGATTTCCA
GAATGGCATCACAGGAATTCGTTTTGCTGGAGGAGAGAAGTGTACATTAAGCGCAAGTGAAGGCTCGT
ATTCCTGAGGTGGGCGCCGTGACCAAACAGAGCATCTCCTCCAAACTGGAAGGCAAGATCATGCCAGTCA
AATATGAAGAAAATTCCTTATCTGGGTGGCTGTAGATCAGCCTGTGAAGGACAACAGCTTCTTGAGTTC
TAAGGTGTTAGAAGTCTGCGGTGACCTTCCTATTTCTGGCTTAAACCAACCTATCCAAAAGAAATCCAG
AGGAAAGAAAGAGAAGTGGTAAGAAAAATGTTCCAACCTACCACAAAAGACCACACAGTGGACCACGGA
GCAACCCAGGCGCTGGAAGACTGAATAATGAAACCAGACCCAGTGTCAAGAGGACTCACAAGCCTTCAA
TCCTGATAATCCTTATCATCAGGAAGGGGAAAGCATGACATTCGACCCTAGACTGGATCAGGAAGGAATC
TGTTGTATAGAATGTAGGCGGAGCTACACCCACTGCCAGAAGATCTGTGAACCCCTGGGGGCTATTACC
CATGGCCTTATAATTATCAAGGCTGCCGTTCCGGCTGCAGAGTCATCATGCCATGTAGCTGGTGGGTGGC
CCGATCTTGGGCATGGT

ACGCGTACGCGGCCGCTCGAGCAGAAACTCATCTCAGAAGAGGATCTGGCAGCAATGATATCCTGGATT
ACAAGGATGACGACGATAAGGTTAA



[View online »](#)

Protein Sequence: >RC213301 protein sequence
Red=Cloning site Green=Tags(s)

MTENSDKVPIALVGPDDVEFCSPPAYATLTVKPSSPARLLKVGAVVLISGAVLLLFGAIGAFYFWKGS
 HIYNVHYTMSINGKLQDGSMEIDAGNNLETFKMGSGAEEAIAVNDQNGITGIRFAGGEKCYIKAQVKAR
 IPEVGAVTKQSISSKLEGIKMPVKEYEENSLIIVAVDQPVKDNSFLSSKVLLECGDLPIFWLKPTYKPIEQ
 RERREVRKIVPTTTKRPHSRPNPGAGRLNNETRPSVQEDSQAFNPDNPHYQEGESMTFDPRLDHEGI
 CCIECRRSYTHCQKICEPLGGYYPWPYNYQGRSACRVIMPSCSWVVARILGMV

TRTRPLEQKLISEEDLAANDILDYKDDDDKV

Chromatograms: https://cdn.origene.com/chromatograms/mk6521_h01.zip

Restriction Sites: SgfI-MluI

Cloning Scheme:

Cloning sites used for ORF Shuttling:



* The last codon before the Stop codon of the ORF

ACCN: NM_007015

ORF Size: 1109 bp

OTI Disclaimer: The molecular sequence of this clone aligns with the gene accession number as a point of reference only. However, individual transcript sequences of the same gene can differ through naturally occurring variations (e.g. polymorphisms), each with its own valid existence. This clone is substantially in agreement with the reference, but a complete review of all prevailing variants is recommended prior to use. [More info](#)

OTI Annotation: This clone was engineered to express the complete ORF with an expression tag. Expression varies depending on the nature of the gene.

Components: The ORF clone is ion-exchange column purified and shipped in a 2D barcoded Matrix tube containing 10ug of transfection-ready, dried plasmid DNA (reconstitute with 100 ul of water).

Reconstitution Method:

1. Centrifuge at 5,000xg for 5min.
2. Carefully open the tube and add 100ul of sterile water to dissolve the DNA.
3. Close the tube and incubate for 10 minutes at room temperature.
4. Briefly vortex the tube and then do a quick spin (less than 5000xg) to concentrate the liquid at the bottom.
5. Store the suspended plasmid at -20°C. The DNA is stable for at least one year from date of shipping when stored at -20°C.

RefSeq: [NM_007015.3](#)

RefSeq Size: 1538 bp

RefSeq ORF: 1005 bp

Locus ID: 11061

UniProt ID: [O75829](#)

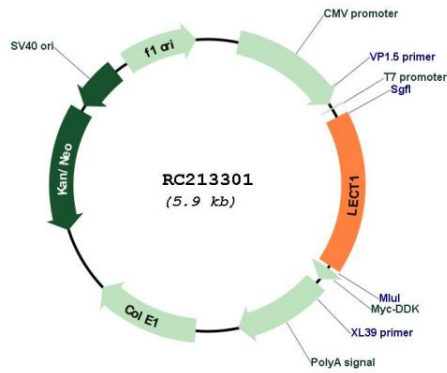
Cytogenetics: 13q14.3

Protein Families: Secreted Protein, Transmembrane

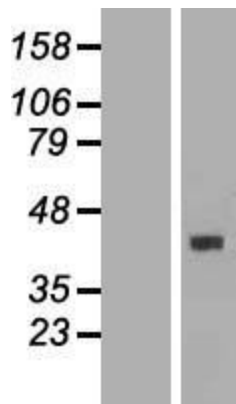
MW: 37 kDa

Gene Summary: This gene encodes a glycosylated transmembrane protein that is cleaved to form a mature, secreted protein. The N-terminus of the precursor protein shares characteristics with other surfactant proteins and is sometimes called chondrosurfactant protein although no biological activity has yet been defined for it. The C-terminus of the precursor protein contains a 25 kDa mature protein called leukocyte cell-derived chemotaxin-1 or chondromodulin-1. The mature protein promotes chondrocyte growth and inhibits angiogenesis. This gene is expressed in the avascular zone of prehypertrophic cartilage and its expression decreases during chondrocyte hypertrophy and vascular invasion. The mature protein likely plays a role in endochondral bone development by permitting cartilaginous anlagen to be vascularized and replaced by bone. It may be involved also in the broad control of tissue vascularization during development. Alternative splicing results in multiple transcript variants encoding different isoforms. [provided by RefSeq, Jul 2008]

Product images:



Circular map for RC213301



Western blot validation of overexpression lysate (Cat# [LY416253]) using anti-DDK antibody (Cat# [TA50011-100]). Left: Cell lysates from untransfected HEK293T cells; Right: Cell lysates from HEK293T cells transfected with RC213301 using transfection reagent MegaTran 2.0 (Cat# [TT210002]).