

## Product datasheet for RC213287

### CLEC5A (NM\_013252) Human Tagged ORF Clone

#### Product data:

**Product Type:** Expression Plasmids  
**Product Name:** CLEC5A (NM\_013252) Human Tagged ORF Clone  
**Tag:** Myc-DDK  
**Symbol:** CLEC5A  
**Synonyms:** CLECSF5; MDL-1; MDL1  
**Mammalian Cell Selection:** Neomycin  
**Vector:** pCMV6-Entry (PS100001)  
**E. coli Selection:** Kanamycin (25 ug/mL)  
**ORF Nucleotide Sequence:** >RC213287 ORF sequence  
 Red=Cloning site Blue=ORF Green=Tags(s)

TTTTGTAATACGACTCACTATAGGGCGGCCGGAATTCGTCGACTGGATCCGGTACCGAGGAGATCTGCC  
 GCC**CGATCGCC**

ATGAAGTGGCACATGATCATCTCTGGGCTTATTGTGGTAGTGCTTAAAGTTGTTGGAATGACCTTATTTCT  
 TACTTTATTTCCACAGATTTTTAACAAAAGTAACGATGGTTTCACCACCACCAGGAGCTATGGAACAGT  
 CTCACAGATTTTTGGGAGCAGTCCCAAGTCCCAACGGCTTCATTACCACAAGGAGCTATGGAACAGTC  
 TGCCCCAAAGACTGGGAATTTATCAAGCAAGATGTTTTTCTTATCCACTTCTGAATCATCTTGGAAATG  
 AAAGCAGGGACTTTTGCAAAGGAAAAGGATCCACATTGGCAATTGTCAACAGCCAGAGAAACTGAAGTT  
 TCTTCAGGACATAACTGATGCTGAGAAGTATTTTATTGGCTTAATTTACCATCGTGAAGAGAAAAGGTGG  
 CGTTGGATCAACAACTCTGTGTTCAATGGCAATGTTACCAATCAGAATCAGAATTTCAACTGTGCGACAA  
 TTGGCCTAACAAAGACATTTGATGCTGCATCATGTGACATCAGCTACCGCAGGATCTGTGAGAAGAATGC  
 CAAA

**ACGCGT**ACGCGGCCGCTCGAGCAGAACTCATCTCAGAAGAGGATCTGGCAGCAAATGATATCCTGGATT  
 ACAAGGATGACGACGATAAGGTTTAA

**Protein Sequence:** >RC213287 protein sequence  
 Red=Cloning site Green=Tags(s)

MNWHMIISGLIVVVLKVVGMTLFLLYFPQIFNKSNDGFTTTRS YGTVS QIFGSSSPNGFITRRSYGTV  
 CPKDWEFYQARCFLLSTSESSWNESRDFCKGKSTLAI VNTPEKLFQDITDAEKYFIGLIYHREEKRW  
 RWINNSVFNGVNTNQNFNCATIGLTKTFDAASCDISYRRICEKNAK

**TRTRPLEQKLI**SEEDLAANDILDYKDDDDKV



[View online »](#)

**Chromatograms:** [https://cdn.origene.com/chromatograms/mk6445\\_a04.zip](https://cdn.origene.com/chromatograms/mk6445_a04.zip)

**Restriction Sites:** SgfI-MluI

**Cloning Scheme:**



**ACCN:** NM\_013252

**ORF Size:** 564 bp

**OTI Disclaimer:** The molecular sequence of this clone aligns with the gene accession number as a point of reference only. However, individual transcript sequences of the same gene can differ through naturally occurring variations (e.g. polymorphisms), each with its own valid existence. This clone is substantially in agreement with the reference, but a complete review of all prevailing variants is recommended prior to use. [More info](#)

**OTI Annotation:** This clone was engineered to express the complete ORF with an expression tag. Expression varies depending on the nature of the gene.

**Components:** The ORF clone is ion-exchange column purified and shipped in a 2D barcoded Matrix tube containing 10ug of transfection-ready, dried plasmid DNA (reconstitute with 100 ul of water).

**Reconstitution Method:**

1. Centrifuge at 5,000xg for 5min.
2. Carefully open the tube and add 100ul of sterile water to dissolve the DNA.
3. Close the tube and incubate for 10 minutes at room temperature.
4. Briefly vortex the tube and then do a quick spin (less than 5000xg) to concentrate the liquid at the bottom.
5. Store the suspended plasmid at -20°C. The DNA is stable for at least one year from date of shipping when stored at -20°C.

**Note:** Plasmids are not sterile. For experiments where strict sterility is required, filtration with 0.22um filter is required.

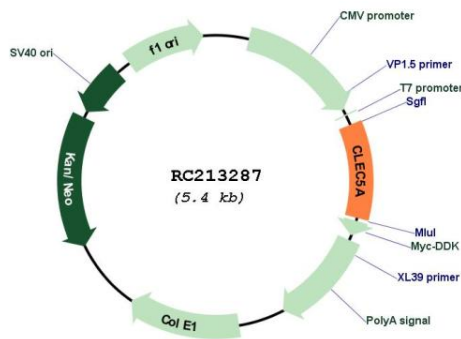
**RefSeq:** [NM\\_013252.3](#)

**RefSeq Size:** 3524 bp

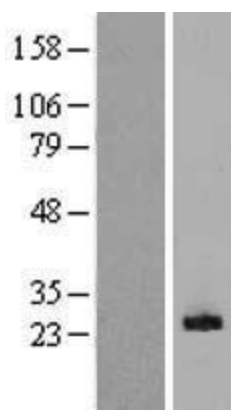
**RefSeq ORF:** 567 bp  
**Locus ID:** 23601  
**UniProt ID:** [Q9NY25](#)  
**Cytogenetics:** 7q34  
**Domains:** CLECT  
**Protein Families:** Druggable Genome, Transmembrane  
**MW:** 21.5 kDa

**Gene Summary:** This gene encodes a member of the C-type lectin/C-type lectin-like domain (CTL/CTLD) superfamily. Members of this family share a common protein fold and have diverse functions, such as cell adhesion, cell-cell signalling, glycoprotein turnover, and roles in inflammation and immune response. The encoded type II transmembrane protein interacts with dnax-activation protein 12 and may play a role in cell activation. Alternative splice variants have been described but their full-length sequence has not been determined. [provided by RefSeq, Jul 2008]

### Product images:



Circular map for RC213287



Western blot validation of overexpression lysate (Cat# [LY415711]) using anti-DDK antibody (Cat# [TA50011-100]). Left: Cell lysates from untransfected HEK293T cells; Right: Cell lysates from HEK293T cells transfected with RC213287 using transfection reagent MegaTran 2.0 (Cat# [TT210002]).