

Product datasheet for RC213279

LHPP (NM_022126) Human Tagged ORF Clone

Product data:

Product Type:	Expression Plasmids
Product Name:	LHPP (NM_022126) Human Tagged ORF Clone
Tag:	Myc-DDK
Symbol:	LHPP
Synonyms:	HDHD2B
Mammalian Cell Selection:	Neomycin
Vector:	pCMV6-Entry (PS100001)
E. coli Selection:	Kanamycin (25 ug/mL)
ORF Nucleotide Sequence:	>RC213279 ORF sequence Red=Cloning site Blue=ORF Green=Tags(s)

TTTTGTAATACGACTCACTATAGGGCGGCCGGAATTCGTCGACTGGATCCGGTACCGAGGAGATCTGCC
GCC**CGGATCGCC**

ATGGCACCGTGGGGCAAGCGGCTGGCTGGCGTGC CGGGGTGCTGCTTGACATCTCGGGCGTGTACG
ACAGCGGCGGGCGGGCGGCACGGCCATCGCCGGCTCGGTGGAGGCGGTGGCCAGACTGAAGCGTTC
GCTGAAGGTGAGGTTCTGCACCAACGAGTCGCAGAAGTCCCGGGCAGAGCTGGTGGGGCAGCTTCAGAGG
CTGGGATTTGACATCTCTGAGCAGGAGGTGACCGCCCCGGCACCAGCTGCCTGCCAGATCCTGAAGGAGC
GAGGCCTGCGACCATACTGCTCATCCATGACGGAGTCCGCTCAGAATTTGATCAGATCGACACATCCAA
CCCAAACGTGTGGTAATTGCAGACGCAGGAGAAAGCTTTTCTTATCAAACATGAATAACGCCTTCCAG
GTGCTCATGGAGCTGGAAAAACCTGTGCTCATATCACTGGGAAAAGGGCGTTACTACAAGGAGACCTCTG
GCCTGATGCTGGACGTTGGTCCCTACATGAAGGCGCTTGAGTATGCCTGTGGCATCAAAGCCGAGGTGGT
GGGGAAGCCTTCTCTGAGTTTTTCAAGTCTGCCCTGCAAGCGATAGGAGTGGAAGCCCACCAGGCCGTC
ATGATTGGGGACGATATCGTGGGCGACGTCGGCGGTGCCAGCGGTGTGGAATGAGAGCGCTGCAGGTGC
GCACCGGGAAGTTCAGGCCAGTGACGAGCACCATCCGGAAGTGAAGGCTGATGGTACGTGGACAACT
CGCAGAGGCAGTGGACCTGCTGCTGCAGCACGCCGACAAG

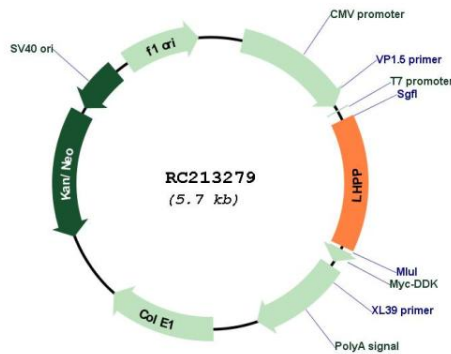
ACGCGTACGCGGCCGCTCGAGCAGAAACTCATCTCAGAAGAGGATCTGGCAGCAAATGATATCCTGGATT
ACAAGGATGACGACGATAAGGTTTAA



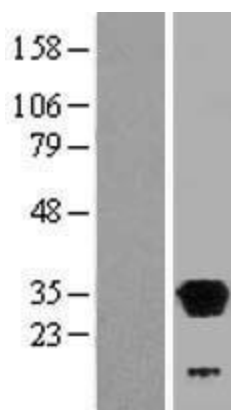
[View online »](#)

Reconstitution Method:	<ol style="list-style-type: none">1. Centrifuge at 5,000xg for 5min.2. Carefully open the tube and add 100ul of sterile water to dissolve the DNA.3. Close the tube and incubate for 10 minutes at room temperature.4. Briefly vortex the tube and then do a quick spin (less than 5000xg) to concentrate the liquid at the bottom.5. Store the suspended plasmid at -20°C. The DNA is stable for at least one year from date of shipping when stored at -20°C.
RefSeq:	NM_022126.1
RefSeq Size:	1703 bp
RefSeq ORF:	813 bp
Locus ID:	64077
UniProt ID:	Q9H008
Cytogenetics:	10q26.13
Domains:	Hydrolase
Protein Families:	Druggable Genome
Protein Pathways:	Oxidative phosphorylation
MW:	29.2 kDa
Gene Summary:	Phosphatase that hydrolyzes imidodiphosphate, 3-phosphohistidine and 6-phospholysine. Has broad substrate specificity and can also hydrolyze inorganic diphosphate, but with lower efficiency (By similarity).[UniProtKB/Swiss-Prot Function]

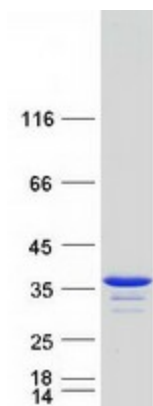
Product images:



Circular map for RC213279



Western blot validation of overexpression lysate (Cat# [LY411763]) using anti-DDK antibody (Cat# [TA50011-100]). Left: Cell lysates from untransfected HEK293T cells; Right: Cell lysates from HEK293T cells transfected with RC213279 using transfection reagent MegaTran 2.0 (Cat# [TT210002]).



Coomassie blue staining of purified LHPP protein (Cat# [TP313279]). The protein was produced from HEK293T cells transfected with LHPP cDNA clone (Cat# RC213279) using MegaTran 2.0 (Cat# [TT210002]).