

Product datasheet for **RC213276**

PRRX1 (NM_006902) Human Tagged ORF Clone

Product data:

Product Type: Expression Plasmids
Product Name: PRRX1 (NM_006902) Human Tagged ORF Clone
Tag: Myc-DDK
Symbol: PRRX1
Synonyms: AGOTC; PHOX1; PMX1; PRX-1; PRX1
Vector: pCMV6-Entry (PS100001)
E. coli Selection: Kanamycin (25 ug/mL)
Cell Selection: Neomycin
ORF Nucleotide Sequence: >RC213276 representing NM_006902
Red=Cloning site Blue=ORF Green=Tags(s)

TTTTGTAATACGACTCACTATAGGGCGGCCGGAATTCGTCGACTGGATCCGGTACCGAGGAGATCTGCC
GCC**CGATCGCC**

ATGACCTCCAGCTACGGGCACGTTCTGGAGCGGCAACCGCGCTGGGCGGCCGCTTGGACAGCCCGGGCA
ACCTCGACACCCTGCAGGCGAAAAAGAATTCTCCGTAGTACCTGCTAGACCTGGAGGAAGCCGGGGA
CATGGTGGCGGCACAGGCGGATGAGAAGCTGGGCGAGGCTGGCCGGAGCCTGCTGGAGTCGCCGGGACTC
ACCAGCGGCAGCGACACCCCGCAGCAGGACAATGACCAGCTGAACCTCAGAAGAAAAAAGAGAGAAAGC
AGCGAAGGAATAGGACAACCTTCAATAGCAGCCAGCTGCAGGCTTTGGAGCGTGTCTTTGAGCGGACACA
CTATCCTGATGCTTTTGTGCGAGAAGACCTTGCCCGCCGGGTGAACCTCACCGAGGCGAGAGTGCAGGTG
TGGTTTCAGAACCGAAGAGCCAAGTTCGCGAGGAATGAGAGAGCCATGCTAGCCAATAAAAAAGCTTCCC
TCCTCAAATCCTACTCAGGAGACGTGACTGCTGTGGAGCAGCCATCGTACCTCGTCTGCTCCGAGACC
CACCGATTATCTCTCCTGGGGACAGCGTCTCCGTACAGATCCTCGTCCCTCCAAGATGTTGTTTACAC
GAGGGGCTTCATAACGGATTC

ACGCGTACGCGGCCGCTCGAGCAGAACTCATCTCAGAAGAGGATCTGGCAGCAAATGATATCCTGGATT
ACAAGGATGACGACGATAAGGTTTAA



[View online »](#)

Protein Sequence: >RC213276 representing NM_006902
 Red=Cloning site Green=Tags(s)

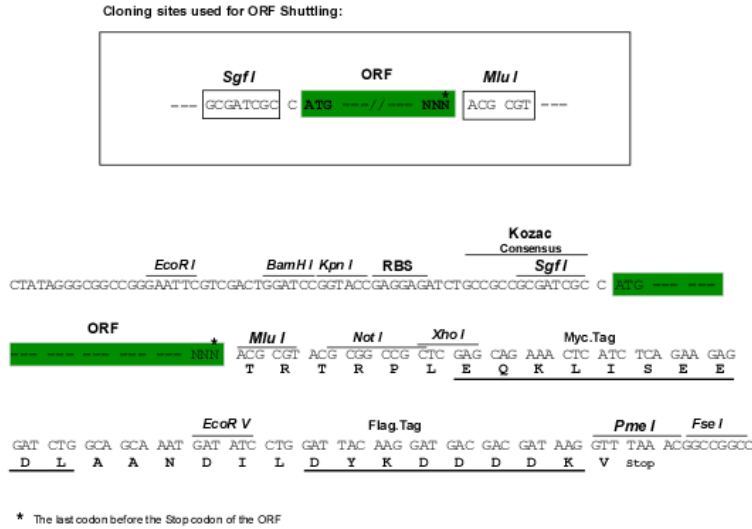
MTSSYGHVLERQPALGGRLDSPGNLDTLQAKKNFSVSHLLDLEEAGDMVAAQADENVGEAGRSLLESPGL
 TSGSDTPQQDNDQLNSEEKKKRQRRNRRTTFNSSQLQALERVFERHTHPDAFVREDLARRVNLTEARVQV
 WFQNRRAKFRNRERAMLANKNASLLKSYSGDVTAVEQPIVPRPAPRPTDYLSWGTPSYRSSLRPRCCLH
 EGLHNGF

TRTRPLEQKLISEEDLAANDILDYKDDDDKV

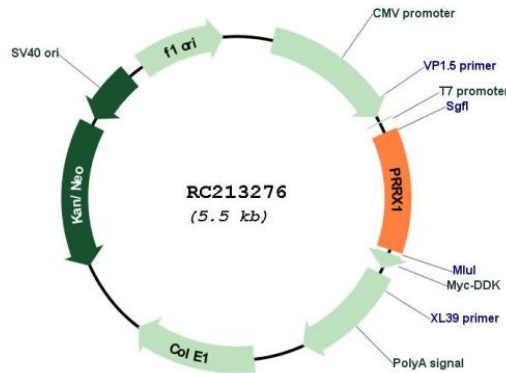
Chromatograms: https://cdn.origene.com/chromatograms/mg2939_b01.zip

Restriction Sites: Sgfl-MluI

Cloning Scheme:



Plasmid Map:



ACCN: NM_006902

ORF Size: 651 bp

OTI Disclaimer: Due to the inherent nature of this plasmid, standard methods to replicate additional amounts of DNA in E. coli are highly likely to result in mutations and/or rearrangements. Therefore, OriGene does not guarantee the capability to replicate this plasmid DNA. Additional amounts of DNA can be purchased from OriGene with batch-specific, full-sequence verification at a reduced cost. Please contact our customer care team at custsupport@origene.com or by calling 301.340.3188 option 3 for pricing and delivery.

The molecular sequence of this clone aligns with the gene accession number as a point of reference only. However, individual transcript sequences of the same gene can differ through naturally occurring variations (e.g. polymorphisms), each with its own valid existence. This clone is substantially in agreement with the reference, but a complete review of all prevailing variants is recommended prior to use. [More info](#)

OTI Annotation: This clone was engineered to express the complete ORF with an expression tag. Expression varies depending on the nature of the gene.

Components: The ORF clone is ion-exchange column purified and shipped in a 2D barcoded Matrix tube containing 10ug of transfection-ready, dried plasmid DNA (reconstitute with 100 ul of water).

Reconstitution Method:

1. Centrifuge at 5,000xg for 5min.
2. Carefully open the tube and add 100ul of sterile water to dissolve the DNA.
3. Close the tube and incubate for 10 minutes at room temperature.
4. Briefly vortex the tube and then do a quick spin (less than 5000xg) to concentrate the liquid at the bottom.
5. Store the suspended plasmid at -20°C. The DNA is stable for at least one year from date of shipping when stored at -20°C.

RefSeq: [NM_006902.5](#)

RefSeq Size: 4071 bp

RefSeq ORF: 654 bp

Locus ID: 5396

UniProt ID: [P54821](#)

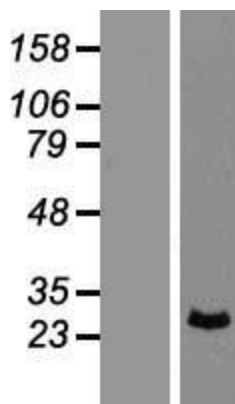
Cytogenetics: 1q24.2

Protein Families: Transcription Factors

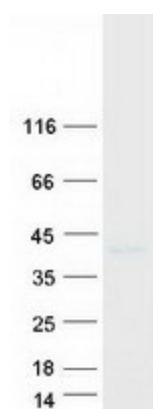
MW: 24.2 kDa

Gene Summary: The DNA-associated protein encoded by this gene is a member of the paired family of homeobox proteins localized to the nucleus. The protein functions as a transcription co-activator, enhancing the DNA-binding activity of serum response factor, a protein required for the induction of genes by growth and differentiation factors. The protein regulates muscle creatine kinase, indicating a role in the establishment of diverse mesodermal muscle types. Alternative splicing yields two isoforms that differ in abundance and expression patterns. [provided by RefSeq, Jul 2008]

Product images:



Western blot validation of overexpression lysate (Cat# [LY416343]) using anti-DDK antibody (Cat# [TA50011-100]). Left: Cell lysates from untransfected HEK293T cells; Right: Cell lysates from HEK293T cells transfected with RC213276 using transfection reagent MegaTran 2.0 (Cat# [TT210002]).



Coomassie blue staining of purified PRRX1 protein (Cat# [TP313276]). The protein was produced from HEK293T cells transfected with PRRX1 cDNA clone (Cat# RC213276) using MegaTran 2.0 (Cat# [TT210002]).