

## Product datasheet for **RC213265**

### CTNNA3 (NM\_013266) Human Tagged ORF Clone

#### Product data:

Product Type:	Expression Plasmids
Product Name:	CTNNA3 (NM_013266) Human Tagged ORF Clone
Tag:	Myc-DDK
Symbol:	CTNNA3
Synonyms:	ARVD13; VR22
Mammalian Cell Selection:	Neomycin
Vector:	pCMV6-Entry (PS100001)
E. coli Selection:	Kanamycin (25 ug/mL)



[View online »](#)

**ORF Nucleotide Sequence:**

>RC213265 representing NM\_013266  
 Red=Cloning site Blue=ORF Green=Tags(s)

TTTTGTAATACGACTCACTATAGGGCGGCCGGGAATTCGTCGACTGGATCCGGTACCGAGGAGATCTGCC  
 GCC**CGCATCGCC**

ATGTCAGCTGAAACACCAATCACATTGAATATCGATCCTCAGGATCTGCAGGTCCAAACATTACCGTGG  
 AGAAGCTACTGGAGCCTCTCATAATCCAGGTTACCACACTTGAAACTGTCCCAGAACCCCTCCAGCAG  
 GAAAAAAGGACGTTTGGAAAAGAGCCAGTGTCTTCTAGCTTCTGTGGAGGAAGCAACTTGAATTTATTA  
 GACAAGGGAGAGAAGATTGCCAGGAAGCTACAGTTTTAAAGGATGAGCTTACGGCTTCACTTGAGGAAG  
 TTCGAAAAGAAAGTGAAGCTCTGAAAGTATCAGCTGAGAGATTTACAGATGACCCCTGTTTTCTCCAAA  
 AAGGGAGGCTGTGGTTCAAGCTGCCCGTGCCTTGCTGGCTGCGGTGACGAGACTCCTTATCCTTGCGGAC  
 ATGATTGATGTCATGTGCCTCTTGCAACATGTGTAGCTTTTCAAAGGACATTTGAGTCTCTCAAAAATG  
 TTGCCAACAAATCTGACCTCCAGAAAACCTACCAGAAGCTTGGGAAGGAGCTGGAAAATTTGGATTATTT  
 AGCCTTCAAACGTCAGCAGGACTTAAAACTCCAATCAGAGAGATGAAATTGCAGAGCCCGAGCTTCA  
 CTGAAGGAGAAGCTCTCCCTCTTGCAATCAATTTGTTTCAGCTTGTGGAGCATTCTGATGTTGCTTCCC  
 TCAAAGCAAGCAAGGACACAGTTTGTGAAGAAATTCAGAATGCTCTCAATGTAATTTCAAATGCTTCACA  
 AGGGATCCAGAATATGACAACCCACCAGAACCTCAGGCAGCAACCCTGGGAAGTGCCCTTGATGAGCTG  
 GAGAATTTAATTGCTGAACTCCACTCACAGTAACTGAGGAGGAAATACGACCATCACTAGAGAAACGCC  
 TTGAAGCCATTATCAGTGGGGCTGCTCTGCTGGCGGATTTCTCATGTACGAGGGACTTACACCGAGAGCG  
 GATTATCGCAGAATGCAACGCCATTTCGCCAGGCTCTTTCAGGATCTGCTTTCAGAGTACATGAACAACGCT  
 GGAAAAAAGAAAGGAGTAATACCCTGAATATTGCTTTAGACAACATGTGTAAGAAGACAAGAGACCTTC  
 GCAGACGCTCCGCAAGGCTATTATAGATCATGTGTGACTCTTTCCTGGATACGACACTCCCTCTTTT  
 GGTTCTCATTGAAGCTGCTAAGAATGGCCGGGAAAAGGAAATAAAAGAATATGCTGCGATATTTTCATGAA  
 CACACCAGCAGGCTTGTAGAGGTGGCAAATCTTGCTTGTTCATGTCAACAAATGAAGATGGAATTTAAAA  
 TTGTCAAATTCAGCCAATCATTTGAAAACCTTGCTCCACAGATTATTAATGCTGCACTTGCTTTGGC  
 TGCAAGACCCAAAAGTCAAGCGGTCAAAAACCATGGAATGTACAAGCGTACATGGGAGAATCATATA  
 CATGCTCTCACTGAAGCCGTAGATGACATTACAAGCATTGATGACTTCTTGCTGTATCTGAAAGCCATA  
 TCTTGGAAAGATGTCAACAAGTGTATCATAGCCTTAAGAGACCAGGATGCTGATAATTTAGACCGTGTGC  
 GGGTGTATCAGAGGCCGGCAGCAAGAGTTGCTCACATCGTACGGGTGAAATGGACAGTTACGAGCCA  
 GGGGCTTACACGGAAGGTGTAATGAGAAATGTTAACTTCTTACAAGTACTGTAATTCCTGAATTTGTAA  
 CACAAGTGAATGTTGCCTTGGAAAGCCTTAAAGCAAAGCTCATTGAATGTGTTGGATGATAATCAATTTGT  
 GGACATCTCAAAGAAGATCTATGATACAATTCATGATATCAGATGTTTCAGTCATGATGATTCGGACCCCA  
 GAGGAAGTGGAGGATGTTTCTGACCTTGAAGAGGAACACGAGGTCCGCAGTACACACCAGCATTACAGCCG  
 AAGGGAAAAGTGAAGGGCTAAGATGACTCAACTGCCTGAGGCAGAAAAAGAAAAGATTGCTGAGCAAGT  
 TGCTGATTTCAAGAAAAGTAAAGAGTAAGCTGGATGCTGAGATTGAGATATGGGATGATACAAGCAACGAC  
 ATCATTGTTCTGGCCAAGAACATGTGTATGATCATGATGGAGATGACAGACTTCACTAGGGGCAAGGAC  
 CACTAAAGCATACAACTGATGTGATCTATGCAGCGAAAATGATATCAGAATCAGGATCAAGGATGGATGT  
 CCTTGCTCGGCAGATTGCTAATCAGTCCCAGATCCATCTTGTAAACAGGACTTGTGGCCTACCTGGAA  
 CAGATTAAGTTCTACTCCCAACTGAAAATCTGCAGTCAAGTTAAAGCTGAGATCCAGAACCTGGGAG  
 GAGAGCTCATCATGTAGCTTTGGACAGTGTACATCCCTGATCCAAGCAGCCAAAAATTTAATGAATGC  
 TGTAGTGCAAACAGTAAAAATGTCTTACATTGCCTCAACCAAGATCATCCGAATCCAGAGTCTGCTGGG  
 CCCCAGCACCCAGTTGTGATGTGGAGAATGAAGGCTCCTGCAAAAAAACCTTGATTAAGAGAGAGAAGC  
 CAGAGGAAACGTGTGAGCTGTGACAGGAGGCTCAGCAAAGAAAAAATCCATCCATTGCAAGTCTAG  
 TGAATTTAGAGGAAGACAAATCTAC

**ACGCGT**ACGCGGCCGCTCGAGCAGAAACTCATCTCAGAAGAGGATCTGGCAGCAATGATATCCTGGATT  
 ACAAGGATGACGACGATAAGGTTTAA

**Protein Sequence:** >RC213265 representing NM\_013266  
Red=Cloning site Green=Tags(s)

```
MSAETPITLNIIDPQDLQVQFTTVEKLLLEPLIIQVTTLVNCPQNPSSRKKGRSKRASVLLASVEEATWNLL
DKGEKIAQEATVLKDEL TASLEEVKKESEALKVSAERFTDDPCFLPKREAVVQAARALLAAVTRLLILAD
MIDVMCLLQHVSAFQRTFESLKNVANKSDLQKTYQKLGKELNLDYLAFKRQQDLKSPNQRDEIAGARAS
LKENSPLLLHSICSACLEHSDVASLKASKDVTCEEIQNALNVISNASQGIQNMTPPEPQAATLGSALDEL
ENLIVLNLPLTVTEEEIRPSLEKRLLEAIIISGAALLADSSCTRDLHRERIIAECNAIRQALQDLLSEYMNNA
GKKERSNTLNIALDNMCKKTRDLRRLRKAIDHVSDFSFLDTTVPLLVLIEAAKNGREKEIKEYAAIFHE
HTSRLVEVANLACSMSTNEDGKIVKIAANHLETLPQIINAALAAARPKSQAVKNTMEMYKRTWENHI
HVLTEAVDDITSIDDFLAVSESHILEDVNKCIIALRDQDADNLDRAAGAIRGRAARVAHIVTGEMDSYEP
GAYTEGVMRNVNFLTSTVIPEFVTQVNVALEALSKSSLNVLDDNQFVDISKKIYDTIHDIRCSVMMIRTP
EELEDVSDLEEEHEVRSHTSIQTEGKTDRAKMTQLPEAEKEKIAEQVADFVKVSKLDAEIEIWDDTSND
IIVLAKNMCIMMEMTDFTRGKGPLKHTTDVIYAAKMISESGSRMDVLRQIANQCPDPSCKQDLLAYLE
QIKFYSHQLKICSQVKAIEIQLGGELIMSALDSVTSLIQAAKNLMNAVVTQVKMSYIASTKIIRIQSPAG
PRHPVVMWRMKAPAKKPLIKREKPEETCAAVRRGSAKKKIHPLQVMSEFRGRQIY
```

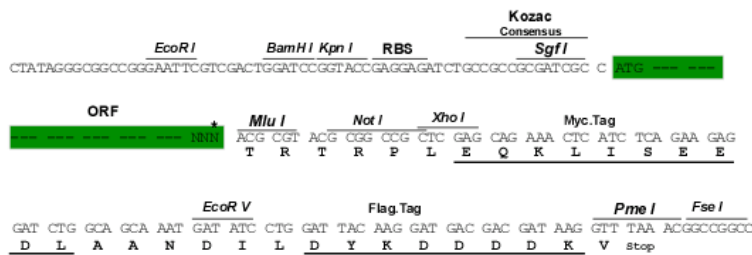
TRTRPLEQKLISEEDLAANDILDYKDDDDKV

**Chromatograms:** [https://cdn.origene.com/chromatograms/mk6676\\_b10.zip](https://cdn.origene.com/chromatograms/mk6676_b10.zip)

**Restriction Sites:** SgfI-MluI

**Cloning Scheme:**

Cloning sites used for ORF Shuttling:

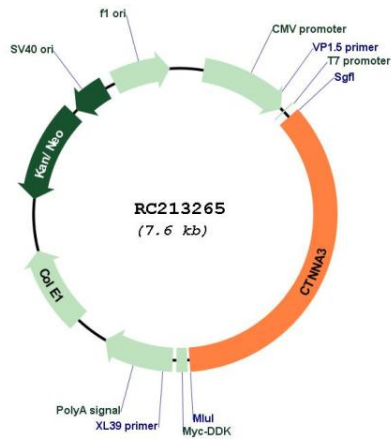


\* The last codon before the Stop codon of the ORF

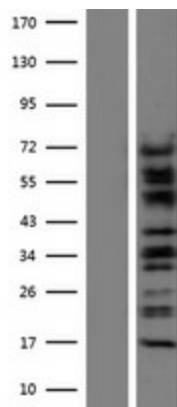
**ACCN:** NM\_013266

<b>ORF Size:</b>	2685 bp
<b>OTI Disclaimer:</b>	The molecular sequence of this clone aligns with the gene accession number as a point of reference only. However, individual transcript sequences of the same gene can differ through naturally occurring variations (e.g. polymorphisms), each with its own valid existence. This clone is substantially in agreement with the reference, but a complete review of all prevailing variants is recommended prior to use. <a href="#">More info</a>
<b>OTI Annotation:</b>	This clone was engineered to express the complete ORF with an expression tag. Expression varies depending on the nature of the gene.
<b>Components:</b>	The ORF clone is ion-exchange column purified and shipped in a 2D barcoded Matrix tube containing 10ug of transfection-ready, dried plasmid DNA (reconstitute with 100 ul of water).
<b>Reconstitution Method:</b>	<ol style="list-style-type: none"><li>1. Centrifuge at 5,000xg for 5min.</li><li>2. Carefully open the tube and add 100ul of sterile water to dissolve the DNA.</li><li>3. Close the tube and incubate for 10 minutes at room temperature.</li><li>4. Briefly vortex the tube and then do a quick spin (less than 5000xg) to concentrate the liquid at the bottom.</li><li>5. Store the suspended plasmid at -20°C. The DNA is stable for at least one year from date of shipping when stored at -20°C.</li></ol>
<b>RefSeq:</b>	<a href="#">NM_013266.4</a>
<b>RefSeq Size:</b>	3024 bp
<b>RefSeq ORF:</b>	2688 bp
<b>Locus ID:</b>	29119
<b>UniProt ID:</b>	<a href="#">Q9UI47</a>
<b>Cytogenetics:</b>	10q21.3
<b>Domains:</b>	Vinculin
<b>Protein Pathways:</b>	Adherens junction, Arrhythmogenic right ventricular cardiomyopathy (ARVC), Endometrial cancer, Leukocyte transendothelial migration, Pathways in cancer, Tight junction
<b>MW:</b>	99.6 kDa
<b>Gene Summary:</b>	This gene encodes a protein that belongs to the vinculin/alpha-catenin family. The encoded protein plays a role in cell-cell adhesion in muscle cells. Mutations in this gene are associated with arrhythmogenic right ventricular dysplasia, familial 13. Alternative splicing results in multiple transcript variants. [provided by RefSeq, Mar 2014]

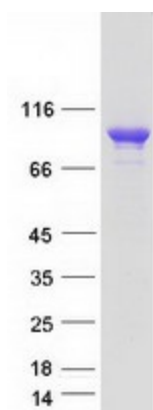
Product images:



Circular map for RC213265



Western blot validation of overexpression lysate (Cat# [LY426767]) using anti-DDK antibody (Cat# [TA50011-100]). Left: Cell lysates from untransfected HEK293T cells; Right: Cell lysates from HEK293T cells transfected with [RC226241] using transfection reagent MegaTran 2.0 (Cat# [TT210002]).



Coomassie blue staining of purified CTNNA3 protein (Cat# [TP313265]). The protein was produced from HEK293T cells transfected with CTNNA3 cDNA clone (Cat# RC213265) using MegaTran 2.0 (Cat# [TT210002]).