

## Product datasheet for RC213263

### NFYA (NM\_002505) Human Tagged ORF Clone

#### Product data:

Product Type:	Expression Plasmids
Product Name:	NFYA (NM_002505) Human Tagged ORF Clone
Tag:	Myc-DDK
Symbol:	NFYA
Synonyms:	CBF-A; CBF-B; HAP2; NF-YA
Mammalian Cell Selection:	Neomycin
Vector:	pCMV6-Entry (PS100001)
E. coli Selection:	Kanamycin (25 ug/mL)
ORF Nucleotide Sequence:	>RC213263 representing NM_002505 Red=Cloning site Blue=ORF Green=Tags(s)

TTTTGTAATACGACTCACTATAGGGCGGCCGGAATTCGTCGACTGGATCCGGTACCGAGGAGATCTGCC  
GCC**CGATCGCC**

ATGGAGCAGTATACAGCAAACAGCAATAGTTCGACAGAGCAGATTGTTGTCCAGGCAGGACAGATTCAGC  
AGCAGCAGCAGGGTGGTGTCACTGCTGTGCAGTTGCAGACTGAGGCCAGGTGGCATCCGCCTCAGGCCA  
GCAAGTCCAGACCCTCCAGGTAGTCCAAGGGCAGCCATTAATGGTGCAGGTCAGTGGAGGCCAGCTAATC  
ACATCAACTGGCCAAACCCATCATGGTCCAGGCTGTCCCTGGTGGACAAGGTCAAACCATCATGCAAGTAC  
CTGTTTCTGGAACACAGGGTTTGCAGCAAATACAGTTGGTCCCACCTGGACAGATCCAGATCCAGGGTGG  
ACAGGCTGTGCAGGTGCAGGGCCAGCAGGGCCAGACCCAGCAGATCATCATCCAGCAGCCCCAGACGGCT  
GTCACTGCTGGCCAGACTCAGACACAGCAGCAGATTGCTGTCCAGGGACAGCAAGTGGCAGACAGCTGCTG  
AAGGGCAGACCATCGTCTATCAACCAGTTAATGCAGATGGCACCATTCTCCAGCAAGTTACAGTCCCTGT  
TTCAGGCATGATCACTATCCCAGCAGCCAGTTTGGCAGGAGCACAGATTGTTCAAACAGGAGCCAATACC  
AACACAACCAGCAGTGGCAAGGGACTGTCACTGTGACACTACCAGTGGCAGGCAATGTGGTCAATTGAG  
GAGGGATGGTCAATGATGGTTCCTGGGGCTGGCTCTGTGCCTGCTATCCAAAGAATCCCTCTACCTGGAGC  
AGAGATGCTTGAAGAAGGCCTCTACGTGAATGCCAAACAATACCACCGTATTCTTAAGAGGAGGCAA  
GCCCCGAGCTAAACTAGAGGCAGAAGGGAAAATCCAAAGGAGAGAGAAGAAATACCTGCATGAGTCTCGGC  
ACCGTCATGCCATGGCACGGAAGCGTGGTGAAGGTGGACGATTTTCTCTCCAAAGGAAAAGGATAGTCC  
CCATATGCAGGATCCAAACCAAGCCGATGAAGAAGCAATGACACAGATCATCCGAGTGTCC

**ACGCGT**ACGCGGCCGCTCGAGCAGAAACTCATCTCAGAAGAGGATCTGGCAGCAAATGATATCCTGGATT  
ACAAGGATGACGACGATAAGGTTTAA



[View online »](#)

**Protein Sequence:** >RC213263 representing NM\_002505  
Red=Cloning site Green=Tags(s)

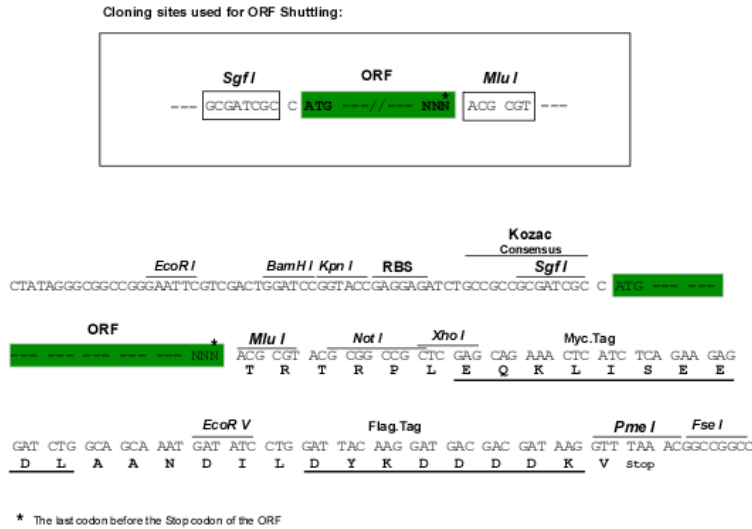
MEQYTANSNSSTEQIVVQAGQIQQQQGGVTA VQLQTEAQVASASGQQVQTLQVVQGGPLMVQVSGGLI  
 TSTGQPI MVQAVPGGQGTIMQVPVSGTQGLQQIQLVPPGQIQIQGGQAVQVGGQGGTQQII IQQPOTA  
 VTAGQTQTQQQIAVQGGQVAQTAEGQTI VYQPVNADGTILQQVTVPVSGMITIPAASLAGAQIVQTGANT  
 NTTSSGQGTVTVTL PVAGNVVNSGGMVMMPGAGSVP AIQRIPLPGAEMLEEEPLVYNAKQYHRILKRRQ  
 ARAKLEAEGKIPKERRKYLHESRHRHAMARKRGEGRFFSPKEKDSPHMQDPNQADEEAMTQIIRVS

TRTRPLEQKLISEEDLAANDILDYKDDDDKV

**Chromatograms:** [https://cdn.origene.com/chromatograms/mk6037\\_h09.zip](https://cdn.origene.com/chromatograms/mk6037_h09.zip)

**Restriction Sites:** SgfI-MluI

**Cloning Scheme:**



**ACCN:** NM\_002505

**ORF Size:** 1041 bp

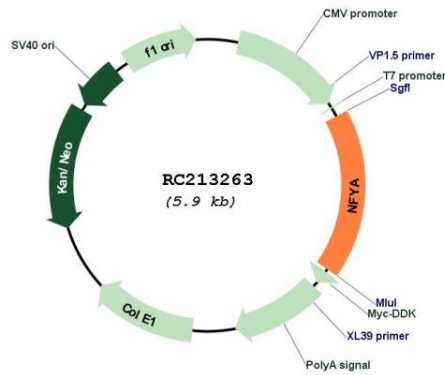
**OTI Disclaimer:** The molecular sequence of this clone aligns with the gene accession number as a point of reference only. However, individual transcript sequences of the same gene can differ through naturally occurring variations (e.g. polymorphisms), each with its own valid existence. This clone is substantially in agreement with the reference, but a complete review of all prevailing variants is recommended prior to use. [More info](#)

**OTI Annotation:** This clone was engineered to express the complete ORF with an expression tag. Expression varies depending on the nature of the gene.

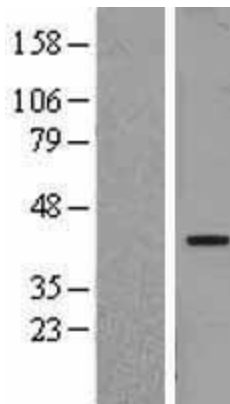
**Components:** The ORF clone is ion-exchange column purified and shipped in a 2D barcoded Matrix tube containing 10ug of transfection-ready, dried plasmid DNA (reconstitute with 100 ul of water).

<b>Reconstitution Method:</b>	<ol style="list-style-type: none"><li>1. Centrifuge at 5,000xg for 5min.</li><li>2. Carefully open the tube and add 100ul of sterile water to dissolve the DNA.</li><li>3. Close the tube and incubate for 10 minutes at room temperature.</li><li>4. Briefly vortex the tube and then do a quick spin (less than 5000xg) to concentrate the liquid at the bottom.</li><li>5. Store the suspended plasmid at -20°C. The DNA is stable for at least one year from date of shipping when stored at -20°C.</li></ol>
<b>RefSeq:</b>	<a href="#">NM_002505.5</a>
<b>RefSeq Size:</b>	2834 bp
<b>RefSeq ORF:</b>	1044 bp
<b>Locus ID:</b>	4800
<b>UniProt ID:</b>	<a href="#">P23511</a>
<b>Cytogenetics:</b>	6p21.1
<b>Domains:</b>	CBF
<b>Protein Families:</b>	Transcription Factors
<b>Protein Pathways:</b>	Antigen processing and presentation
<b>MW:</b>	36.7 kDa
<b>Gene Summary:</b>	<p>The protein encoded by this gene is one subunit of a trimeric complex, forming a highly conserved transcription factor that binds to CCAAT motifs in the promoter regions in a variety of genes. Subunit A associates with a tight dimer composed of the B and C subunits, resulting in a trimer that binds to DNA with high specificity and affinity. The sequence specific interactions of the complex are made by the A subunit, suggesting a role as the regulatory subunit. In addition, there is evidence of post-transcriptional regulation in this gene product, either by protein degradation or control of translation. Further regulation is represented by alternative splicing in the glutamine-rich activation domain, with clear tissue-specific preferences for the two isoforms. [provided by RefSeq, Jul 2008]</p>

Product images:



Circular map for RC213263



Western blot validation of overexpression lysate (Cat# [LY400893]) using anti-DDK antibody (Cat# [TA50011-100]). Left: Cell lysates from untransfected HEK293T cells; Right: Cell lysates from HEK293T cells transfected with RC213263 using transfection reagent MegaTran 2.0 (Cat# [TT210002]).