

Product datasheet for **RC213260**

CLCC1 (NM_001048210) Human Tagged ORF Clone

Product data:

Product Type:	Expression Plasmids
Product Name:	CLCC1 (NM_001048210) Human Tagged ORF Clone
Tag:	Myc-DDK
Symbol:	CLCC1
Synonyms:	MCLC; RP32
Mammalian Cell Selection:	Neomycin
Vector:	pCMV6-Entry (PS100001)
E. coli Selection:	Kanamycin (25 ug/mL)



[View online »](#)

ORF Nucleotide Sequence:

>RC213260 representing NM_001048210
 Red=Cloning site Blue=ORF Green=Tags(s)

TTTTGTAATACGACTCACTATAGGGCGGCCGGAATTCGTCGACTGGATCCGGTACCGAGGAGATCTGCC
 GCC**CGGATCGCC**

ATGCTGTGTTCTTTGCTCCTTTGTAATGTCTGTTGCTGGTAGCTGGTTATGCTCATGATGACTGGA
 TTGACCCACAGACATGCTTAACTATGATGCTGCTTCAGGAACAATGAGAAAATCTCAGGCAAAATATGG
 TATTTACAGGGAAAAGGATGTCAGTCTGACTTGTGATGCTGATGAAATATCAGAATGTTATCAGAAA
 CTTGATCTTTAACTTATAAGATTGATGAGTGTGAAAAGAAAAGAGGGAAGACTATGAAAGTCAAAGCA
 ATCCTGTTTTAGGAGATACTTAAATAAGATTTTAATTGAAGCTGGAAAGCTTGGACTTCTGATGAAAA
 CAAAGGCGATATGCATTATGATGCTGAGATTACCTTAAAAGAGAACTTTGTTAGAAAACAGAAGTTT
 CTCATGGAGAAGACTGGAAACCAGGTGCCTTGGATGATGCACTAAGTGATTTTTAATTAATTTAAGT
 TTCATGATTTTGAACATGGAAGTGGCGATTGCAAGATTCCTTTGGAGTGGATCCATATAATGTGTTAAT
 GGTACTTCTTTGCTGCTGCTGCATCGTGGTTTTAGTGGCTACCGAGCTGTGGACATATGTACGTTGGTAC
 ACTCAGTTGAGACGTGTTTTAATCATCAGCTTCTGTTTCAAGTTTGGGATGGAATGGATGATTTATATA
 AGCTAGCTTTTGCACAGCATCAGGCTGAAGTCGCCAAGATGGAGCCATTAACAATGTGTGTGCCAAAAA
 GATGGACTGGACTGGAAGTATCTGGGAATGTTTTAGAAGTTTATGGACCTATAAGGATGACCCATGCCAA
 AAATACTATGAGCTCTTACTAGTCAACCCTATTTGGTTGGTCCCACCAACAAAGGCACTTGCAGTTACAT
 TCACCACATTTGTAACGGAGCCATTGAAGCATATTGAAAAGGAACTGGGGAATTTATTAAGCACTCAT
 GAAGGAAATCCAGCGCTGCTTCATCTCCAGTCTGATAATTATGGCATTAGCCATCTGAGTTTCTGC
 TATGGTCTGAAAATCAGTTCATGCTGAGACATATAGGCGTCTGAGAGAGAACCTCCCAGGCAC
 TTCGGCCACGGGATAGAAGACGGCAGGAGGAAATTGATTATAGACCTGATGGTGGAGCAGGTGATGCCGA
 TTTCCATTATAGGGCCAAATGGGCCCACTGAGCAAGGCCCTTATGCCAAAACGTATGAGGGTAGAAGA
 GAGATTTTGAAGAGAGAGATGTTGACTTGAGATTTGAGACTGGCAACAAGAGCCCTGAAGTCTCCGGG
 CATTGATGTACCAGACGACAGGCACGAGAGCATCCACGGTGGTACCCAGTCATAAATCACCTGTTTT
 GGATACAAAGCCCAAGGAGACAGGTGGAATCCTGGGGGAAAGCACACCGAAAGAAAGCAGTACTGAAAGC
 AGCCAGTCGGCAAGCCTGTCTCTGGCCAAGACACATCAGGGAATACAGAAGTTTACCCGACGGGAAA
 AGGCCAGCTCAAGTCTGAAGCCGACGGCAGCCAGACCAAGGCAGCACATACAGCCCCGAAGAGGTGT
 GGCTGGACCACGTGGACAGGATCCGGTACGAGCCCTGTGGC

ACGCGTACGCGGCCGCTCGAGCAGAACTCATCTCAGAAGAGGATCTGGCAGCAAATGATATCTGGATT
 ACAAGGATGACGACGATAAGGTTTAA

Protein Sequence:

>RC213260 representing NM_001048210
 Red=Cloning site Green=Tags(s)

MLCSLLLCELLL VAGYAHDDWIDPTDMLNYDAASGTMRSQAKYGISGEKDVSPDLSCADEISECYHK
 LDSLTYKIDECEKKKREDYESQSNPVFRRLNKLIEAGKLGLPDENKGMHYDAEIIKRETLLEIQKF
 LNGEDWKPALDDALSDILINFKFHDFETWKRFEDSFGVDPYNVLMVLLCLLCIVVLVATELWTVYRWY
 TQLRRVLIISFLFSLGWNWMLYKLAFAQHQAEVAKMEPLNVC AKKMDWTGSIWEWFRSSWYKDDPCQ
 KYEYELLLVNIWLVPTKALAVTFTTFVTEPLKHIKGTGEFIKALMKEIPALLHLPVLIIMALAILSFC
 YGAGKSVHVLRHIGPEREPPQALRPDRRRQEEIDYRPDGGAGDADFHYRQMGPTEQGPYAKTYEGRR
 EILRERDVLRFQTGNKSPEVLRADFVPAEAREHPTVVP SHKSPVLDTKPKETGGILGEGTPKESSTES
 SQSAKPVSGQDTSNGNTEGSPA AEKALKSEAAGSPDQGSTYSPARGVAGPRGQDPVSSPCG

TRTRPLEQKLISEEDLAANDILDYKDDDDKV

Chromatograms:

https://cdn.origene.com/chromatograms/mg4808_b01.zip

Restriction Sites:

SgfI-MluI

Cloning Scheme:


ACCN: NM_001048210

ORF Size: 1653 bp

OTI Disclaimer: The molecular sequence of this clone aligns with the gene accession number as a point of reference only. However, individual transcript sequences of the same gene can differ through naturally occurring variations (e.g. polymorphisms), each with its own valid existence. This clone is substantially in agreement with the reference, but a complete review of all prevailing variants is recommended prior to use. [More info](#)

OTI Annotation: This clone was engineered to express the complete ORF with an expression tag. Expression varies depending on the nature of the gene.

Components: The ORF clone is ion-exchange column purified and shipped in a 2D barcoded Matrix tube containing 10ug of transfection-ready, dried plasmid DNA (reconstitute with 100 ul of water).

Reconstitution Method:

1. Centrifuge at 5,000xg for 5min.
2. Carefully open the tube and add 100ul of sterile water to dissolve the DNA.
3. Close the tube and incubate for 10 minutes at room temperature.
4. Briefly vortex the tube and then do a quick spin (less than 5000xg) to concentrate the liquid at the bottom.
5. Store the suspended plasmid at -20°C. The DNA is stable for at least one year from date of shipping when stored at -20°C.

RefSeq: [NM_001048210.3](#)

RefSeq Size: 4825 bp

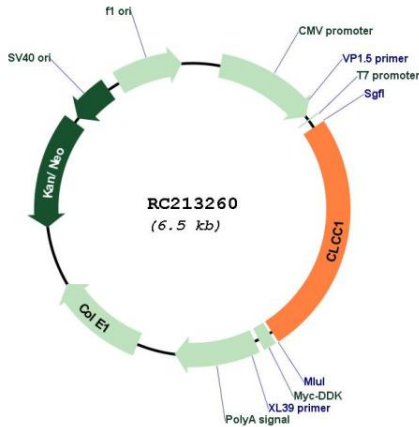
RefSeq ORF: 1656 bp

Locus ID: 23155

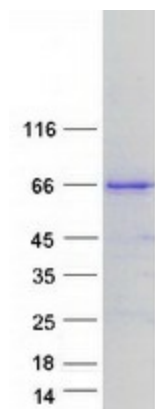
UniProt ID: [Q96S66](#)

Cytogenetics: 1p13.3
Protein Families: Ion Channels: Other, Transmembrane
MW: 61.8 kDa
Gene Summary: Seems to act as a chloride ion channel.[UniProtKB/Swiss-Prot Function]

Product images:



Circular map for RC213260



Coomassie blue staining of purified CLCC1 protein (Cat# [TP313260]). The protein was produced from HEK293T cells transfected with CLCC1 cDNA clone (Cat# RC213260) using MegaTran 2.0 (Cat# [TT210002]).