

Product datasheet for **RC213248**

CEACAM20 (NM_001102597) Human Tagged ORF Clone

Product data:

Product Type:	Expression Plasmids
Product Name:	CEACAM20 (NM_001102597) Human Tagged ORF Clone
Tag:	Myc-DDK
Symbol:	CEACAM20
Synonyms:	UNQ9366
Mammalian Cell Selection:	Neomycin
Vector:	pCMV6-Entry (PS100001)
E. coli Selection:	Kanamycin (25 ug/mL)



[View online »](#)

ORF Nucleotide Sequence:

>RC213248 representing NM_001102597
 Red=Cloning site Blue=ORF Green=Tags(s)

TTTTGTAATACGACTCACTATAGGGCGGCCGGGAATTCGTCGACTGGATCCGGTACCGAGGAGATCTGCC
 GCC**CGGATCGCC**

ATGGGGCCTGCTGACTCATGGGGACACCACTGGATGGGAATCCTGCTTTACGCTCGCTTTGTACCGTAT
 GGAGTCCCTCCAGCTGCAGCCCAGCTCACCTCAATGCCAACCCACTTGATGCCACCCAAAGTGAGGATGT
 TGTTCGCTGTGTTTGGGACCCCCAGGACACCCAGATTTCATGGCAGATCCAGAGAGCTGGCCAAACCC
 TCCATTGCAGTCAGCCCAGGCACTGCCATAGAGCAGAAGGACATGGTGACCTTCTACTGCACCACTAAGG
 ACGTCAACATTACCATCCACTGGGTTTCCAACAACCTCTCCGTTGTGTTCCATGAGCGCATGCAGCTGTC
 CAAGGATGGCAAGATCCTCACCATTCTCATTGTCCAGCGGGAGGACTCAGGGACTACCAATGTGAAGCT
 CGAGATGCCCTTCTGAGCCAGAGGAGCGACCCCATCTTCTGGATGTGAAGTATGGTCTGATCCTGTTG
 AAATCAAATTGGAGTCTGGTGTGCCAGTGGGGAGGTGGTTGAGGTGATGGAGGGCTCCAGCATGACCTT
 CTTAGCGGAAACAAAGTCTCACCACCCCTGTGCCTATACTTGGTTTCTCCTTGACTCCATTCTGTCTCAC
 ACCACGAGAACATTCACCATCCATGCTGTGTCCAGAGAACATGAGGGCCTGTACAGGTGCTTGGTGTCCA
 ACAGTGCCACCCACCTGTCCAGCCTGGTACTCTGAAGGTCCGAGTACTTGAACACTGACCATGCCTCA
 AGTCGTGCCTTCAAGCCTGAACCTTGTGGAGAATGCTAGGTCTGTGGACCTGACCTGCCAAACCGTCAAT
 CAGAGTGTGAATGTCCAGTGGTTCCTAAGTGGCCAGCCCTCCTGCCAGTGAGCACCTGCAGCTGTGAG
 CTGACAACAGGACCCTAATCATCCATGGCCTCCAGCGGAATGACACGGGGCCCTATGCCTGTGAGGTCTG
 GAACTGGGGCAGCCGGCCCGGAGTGAGCCCTTGAGCTGACCATCAACTATGGTCTGACCAAGTGCAC
 ATCACCAGGGAGTCGGCATCTGAGATGATCAGCACCATAGAGGCAGAGCTCAACTCCAGCCTGACCTGC
 AGTGTGGGCGGAGTCCAAGCCAGGTGCTGAGTATCGCTGGACTCTTGAACACTCCACCGGGGACACCT
 GGGTGAGCAGCTGATTATCAGGGCTCTGACCTGGGAACACGACGGGATCTACAACCTGCACAGCCTCCAAC
 TCTCTCACTGGCCTGGCCGCTCCACTTCACTGCTGGTCAAGGTGGTAGGTCCCCAGTCTCCTCCTCCTGT
 CCTCAGGGCCATCGCTGGTATTGTGTCATCGGGATCCTGGCTGTCATTGCTGTGGCCTCAGAACTGGGCTA
 TTTTCTCTACATCAGAAATGCCAGACGGCCCTCAAGGAAAACAACAGAGGACCCAGTATGAGACCTCA
 CAACCCATCCCGAAGGAGGAGCACCCACAGAGCCAGTCCGAAAGCCTGAGTCTGAGTATTGCAATA
 TATCCAGCTTCAAGGACGGATCAGAGTCAACTGATGCAACCACAGACCTTCCAGAGGAGACCTATGA
 GACGAAGTGCCTTCAAGCCGTAGAGGCAATTTTTCAGCCCTGGAAGCCACCACCCAAACCTCTG
 ATGCCCCACTCAGATTGGTCTCACTGTGCCAAAAACATGGAGTCAATCTATGAGGAGCTTGTGAATC
 CAGAGCCCAACTTACATCCAATCAACCCCTCCGTC

ACGCGTACGCGGCCGCTCGAGCAGAACTCATCTCAGAAGAGGATCTGGCAGCAAATGATATCCTGGATT
 ACAAGGATGACGACGATAAGGTTTAA

Protein Sequence:

>RC213248 representing NM_001102597
 Red=Cloning site Green=Tags(s)

MGPADSWGHHWGMILLASLCTVWSPAAAQLTLNANPLDATQSEDVVLVPGTFRTPQIHGRSRELAKP
 SIAVSPGTAIEQKDMVTFYCTTKDVNITIHVSNL SVVFHERMQLSKDGKILITILIVQREDSGYQCEA
 RDALLSQRSDPIFLDVKYGPDPEIKLESGVASGEVVEVMESMTFLAETKSHPPCAYTWFLDLSILSH
 TTRFTTIIHAVSREHEGLYRCLVSNATHLSSLGLKVRVLETLTMPQVVPSSLNLVENARSVDLTCQTVN
 QSVNVQWFLSGQPLLPSEHLQLSADNRTLIIHGLQRNDTGPYACEVWVWGSRRARSEPLELTINYGPDQVH
 ITRESASEMISTIEAELNSSLTLQCWAESKPGAERYRWTLHSTGEHLGEQLIIRALTWEHDGIYNCTASN
 SLTGLARSTSVLVKVVGPQSSSLSSGAIAGIVIGILAVIAVASELGYFLYIRNARRPSRKTEDPSHETS
 QPIPKHEHPTPEPSSLSPEYCNISQLQGRIRVELMQPPDLPEETYETKLPASRRGNSFSPWKPPPKPL
 MPPLRLVSTVPKNMESIYEELVNPEPNTYIQINPSV

TRTRPLEQKLISEEDLAANDILDYKDDDDKV

Chromatograms:

https://cdn.origene.com/chromatograms/mk8005_h12.zip

Restriction Sites: SgfI-MluI

Cloning Scheme:



ACCN: NM_001102597

ORF Size: 1788 bp

OTI Disclaimer: The molecular sequence of this clone aligns with the gene accession number as a point of reference only. However, individual transcript sequences of the same gene can differ through naturally occurring variations (e.g. polymorphisms), each with its own valid existence. This clone is substantially in agreement with the reference, but a complete review of all prevailing variants is recommended prior to use. [More info](#)

OTI Annotation: This clone was engineered to express the complete ORF with an expression tag. Expression varies depending on the nature of the gene.

Components: The ORF clone is ion-exchange column purified and shipped in a 2D barcoded Matrix tube containing 10ug of transfection-ready, dried plasmid DNA (reconstitute with 100 ul of water).

- Reconstitution Method:
1. Centrifuge at 5,000xg for 5min.
 2. Carefully open the tube and add 100ul of sterile water to dissolve the DNA.
 3. Close the tube and incubate for 10 minutes at room temperature.
 4. Briefly vortex the tube and then do a quick spin (less than 5000xg) to concentrate the liquid at the bottom.
 5. Store the suspended plasmid at -20°C. The DNA is stable for at least one year from date of shipping when stored at -20°C.

RefSeq: [NM_001102597.1](#), [NP_001096067.1](#)

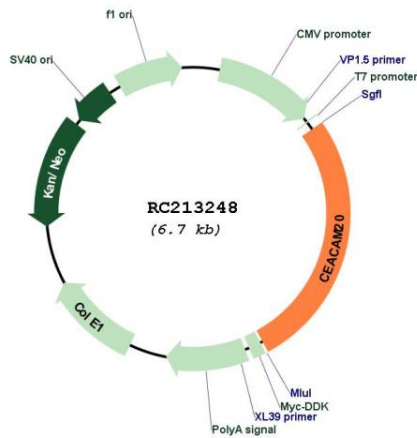
RefSeq Size: 1809 bp

RefSeq ORF: 1791 bp

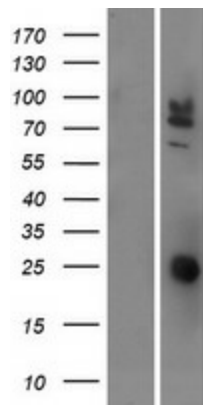
Locus ID: 125931

UniProt ID: [Q6UY09](#)
Cytogenetics: 19q13.31
Protein Families: Transmembrane
MW: 65.6 kDa
Gene Summary: Together with the tyrosine-protein kinase SYK, enhances production of the cytokine CXCL8/IL-8 via the NFkB pathway and may thus have a role in the intestinal immune response. [UniProtKB/Swiss-Prot Function]

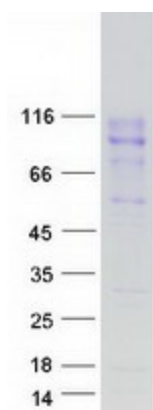
Product images:



Circular map for RC213248



Western blot validation of overexpression lysate (Cat# [LY420166]) using anti-DDK antibody (Cat# [TA50011-100]). Left: Cell lysates from untransfected HEK293T cells; Right: Cell lysates from HEK293T cells transfected with RC213248 using transfection reagent MegaTran 2.0 (Cat# [TT210002]).



Coomassie blue staining of purified CEACAM20 protein (Cat# [TP313248]). The protein was produced from HEK293T cells transfected with CEACAM20 cDNA clone (Cat# RC213248) using MegaTran 2.0 (Cat# [TT210002]).