

Product datasheet for RC213245

MEMO1 (NM_015955) Human Tagged ORF Clone

Product data:

Product Type:	Expression Plasmids
Product Name:	MEMO1 (NM_015955) Human Tagged ORF Clone
Tag:	Myc-DDK
Symbol:	MEMO1
Synonyms:	C2orf4; CGI-27; MEMO; NS5ATP7
Mammalian Cell Selection:	Neomycin
Vector:	pCMV6-Entry (PS100001)
E. coli Selection:	Kanamycin (25 ug/mL)
ORF Nucleotide Sequence:	>RC213245 ORF sequence Red=Cloning site Blue=ORF Green=Tags(s)

TTTTGTAATACGACTCACTATAGGGCGCCGGGAATTCGTCGACTGGATCCGGTACCGAGGAGATCTGCC
GCC**CGATCGCC**

ATGTCCAACCGAGTGGTCTGCCGAGAAGCCAGTCACGCCGGGAGCTGGTACACAGCCTCAGGACCGCAGC
TGAATGCACAGCTAGAAGGTTGGCTTTCACAAGTACAGTCTACAAAAGACCTGCTAGAGCCATTATTGC
CCCCATGCAGGATATACGTACTGTGGTCTTGTGCTGCCATGCTTATAACAAGTGGATCCGTCTATT
ACCCGGAGAATTTTCATCCTTGGCCTTCTCATCATGTGCCCTCTCTCGATGTGCACTTCCAGTGTGG
ATATATATAGGACACCTCTGTATGACCTTCGTATTGACCAAAGATTTACGGAGAAGTGTGAAGACAGG
AATGTTTGAACGCATGTCTCTGCAGACAGATGAAGATGAACACAGTATTGAAATGCATTTGCCTTATACA
GCTAAAGCCATGGAAAGCCATAAGGATGAGTTTACCATTATCCTGTACTGGTTGGAGCTCTGAGTGAGT
CAAAGAACAGGAATTCGGAAAACCTCTCAGTAAATATCTAGCGGATCCTAGTAATCTCTTTGTGGTTTC
TTCTGATTTCTGCCATTGGGGTCAAAGGTTCCGTTACAGTTACTATGATGAATCCCAGGGGGAGATTTAT
AGATCCATTGAACATCTAGATAAAATGGGTATGAGTATTATAGAACAATTAGACCCTGTATCTTTAGCA
ATTACTGAAGAAATACCATAATACTATATGTGGAAGACATCCCATTGGGGTGTATTAAATGCTATCAC
AGAGCTCCAGAAGAATGGAATGAATATGAGTTTTTCGTTTTTGAATTATGCCAGTGCAGCCAGTGTAGA
AACTGGCAAGACAGTTTCAGTGAGTTATGCAGCTGGAGCACTCACGGTCCAC

ACGCGTACGCGGCCGCTCGAGCAGAAAACCTCATCTCAGAAGAGGATCTGGCAGCAAATGATATCCTGGATT
ACAAGGATGACGACGATAAGGTTTAA



[View online »](#)

Protein Sequence: >RC213245 protein sequence
Red=Cloning site Green=Tags(s)

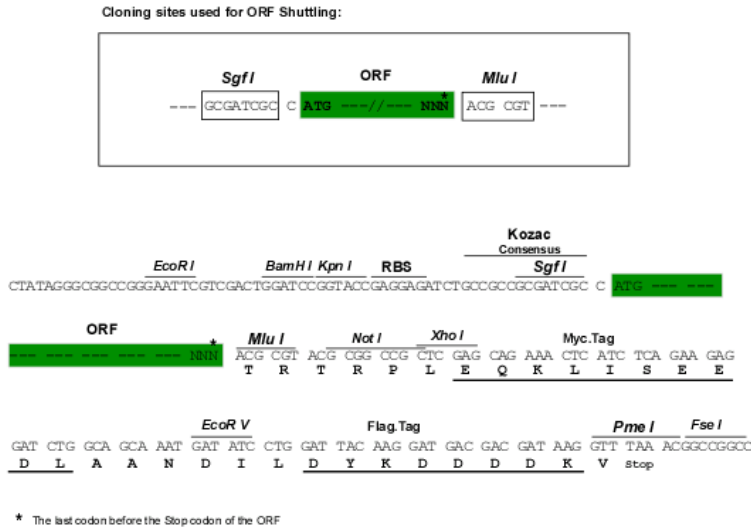
MSNRVVCREASHAGSWYTASGPQLNAQLEGWLSQVQSTKRPARAIAPHAGYTYCGSCAAHAYKQVDP
 TRRIFILGPSHHVPLSRCALSSVDIYRTPLYDLRIDQKIYGELWKTGMFERMSLQDDEHSEIEMHLPYT
 AKAMESHKDEFTIIPVLV GALSESKEQEFGKLF SKYLADPSNLFVSSDFCHWGQRF RYSYDESSQGEIY
 RSIEHLDKMGMSIEQLDPVSFSNYLKKYHNTICGRHPIGVLLNAITELQKNGMNMMSFSLNYAQSQC
 R NWQDSSVSYAAGALTVH

TRTRPLEQKLISEEDLAANDILDYKDDDDKV

Chromatograms: https://cdn.origene.com/chromatograms/mk6433_d07.zip

Restriction Sites: SgfI-MluI

Cloning Scheme:



ACCN: NM_015955

ORF Size: 891 bp

OTI Disclaimer: The molecular sequence of this clone aligns with the gene accession number as a point of reference only. However, individual transcript sequences of the same gene can differ through naturally occurring variations (e.g. polymorphisms), each with its own valid existence. This clone is substantially in agreement with the reference, but a complete review of all prevailing variants is recommended prior to use. [More info](#)

OTI Annotation: This clone was engineered to express the complete ORF with an expression tag. Expression varies depending on the nature of the gene.

Components: The ORF clone is ion-exchange column purified and shipped in a 2D barcoded Matrix tube containing 10ug of transfection-ready, dried plasmid DNA (reconstitute with 100 ul of water).

Reconstitution Method:

1. Centrifuge at 5,000xg for 5min.
2. Carefully open the tube and add 100ul of sterile water to dissolve the DNA.
3. Close the tube and incubate for 10 minutes at room temperature.
4. Briefly vortex the tube and then do a quick spin (less than 5000xg) to concentrate the liquid at the bottom.
5. Store the suspended plasmid at -20°C. The DNA is stable for at least one year from date of shipping when stored at -20°C.

RefSeq: [NM_015955.4](#)

RefSeq Size: 1878 bp

RefSeq ORF: 894 bp

Locus ID: 51072

UniProt ID: [Q9Y316](#)

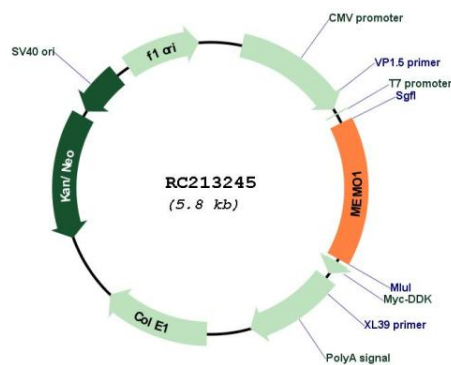
Cytogenetics: 2p22.3

Domains: UPF0103

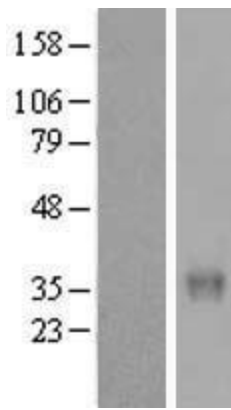
MW: 33.7 kDa

Gene Summary: May control cell migration by relaying extracellular chemotactic signals to the microtubule cytoskeleton. Mediator of ERBB2 signaling. The MEMO1-RHOA-DIAPH1 signaling pathway plays an important role in ERBB2-dependent stabilization of microtubules at the cell cortex. It controls the localization of APC and CLASP2 to the cell membrane, via the regulation of GSK3B activity. In turn, membrane-bound APC allows the localization of the MACF1 to the cell membrane, which is required for microtubule capture and stabilization. Is required for breast carcinoma cell migration.[UniProtKB/Swiss-Prot Function]

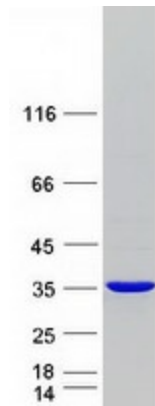
Product images:



Circular map for RC213245



Western blot validation of overexpression lysate (Cat# [LY414307]) using anti-DDK antibody (Cat# [TA50011-100]). Left: Cell lysates from untransfected HEK293T cells; Right: Cell lysates from HEK293T cells transfected with RC213245 using transfection reagent MegaTran 2.0 (Cat# [TT210002]).



Coomassie blue staining of purified MEMO1 protein (Cat# [TP313245]). The protein was produced from HEK293T cells transfected with MEMO1 cDNA clone (Cat# RC213245) using MegaTran 2.0 (Cat# [TT210002]).