

Product datasheet for **RC213232**

ABL2 (NM_007314) Human Tagged ORF Clone

Product data:

Product Type: Expression Plasmids
Product Name: ABL2 (NM_007314) Human Tagged ORF Clone
Tag: Myc-DDK
Symbol: ABL2
Synonyms: ABLL; ARG
Mammalian Cell Selection: Neomycin
Vector: pCMV6-Entry (PS100001)
E. coli Selection: Kanamycin (25 ug/mL)
ORF Nucleotide Sequence: >RC213232 representing NM_007314
Red=Cloning site Blue=ORF Green=Tags(s)

TTTTGTAATACGACTCACTATAGGGCGGCCGGAATTCGTCGACTGGATCCGGTACCGAGGAGATCTGCC
GCC**CGATCGCC**

ATGGGGCAGCAGGTGGGCCGCTCGGGGAAGCTCCGGGGCTCCAGCAGCCTCAGCCCCGCGGGATCCGGG
GCAGCAGTGCAGCCAGGCCCTCCGGCCGAGCGGGACCCGCGGGGCGCACCACAGAGACCGGCTTCAA
TATCTTACCCAGCATGATCACTTTGCCAGCTGTGTGGAGGATGGATTTGAGGGAGACAAGACTGGAGGC
AGTAGTCCAGAAGCTTTGCATCGTCCCTATGGTTGTGATGTTGAACCCAGGCACTAAATGAGGCTATCA
GGTGGAGCTCCAAGGAGAACTTGTCTGGAGCCACTGAGAGTGACCCTAATCTTTCGTTGCACTTTATGA
TTTTGTAGCAAGTGGTGATAACACACTCAGCATCACTAAAGGTGAAAAGCTACGAGTCCCTGGTTACAAC
CAGAATGGTGAGTGGAGTGAAGTTCGCTCTAAGAATGGGCAGGGCTGGGTGCCAAGCAACTACATCACCC
CAGTGAACAGCCTGAAAAACACTCCTGGTACCATGGACCTGTGTACGCAGTGCAGCTGAGTATCTGCT
CAGCAGTCTAATCAATGGCAGCTTCCTGGTGCGAGAAAGTGAGAGTAGCCCTGGGCAGCTGTCCATCTCG
CTCAGGTACGAGGGACGTGTATCACTACAGGATCAATACCACTGCAGATGGCAAGGTGTATGTGACTG
CTGAGAGCCGCTTCAGCACCTTGGCAGAGCTTGTACACCATCACTCCACAGTGGCTGATGGGCTGGTGAC
AACATTACACTACCCAGCACCAAGTGTAAAGCCTACAGTCTATGGTGTGTCCCCATCCACGACAAA
TGGGAAATGGAGCGAACAGATATTACCATGAAGCACAAACTTGGGGCGGTCAGTATGGAGAGGTTTACG
TTGGCGTCTGGAAGAAATACAGCCTTACAGTTGCTGTGAAAACATTGAAGGAAGATACCATGGAGGTAGA
AGAATTCCTGAAAGAAGCTGCAGTAATGAAGGAAATCAAGCATCCTAATCTGGTACAACCTTTAGGTGTG
TGTACTTTGGAGCCACCATTTTACATTGTGACTGAATACATGCCATACGGGAATTTGCTGGATTACCTCC
GAGAATGCAACCGAGAAGAGGTGACTGCAGTTGTGCTGCTCTACATGGCCACTCAGATTTCTTCTGCAAT
GGAGTACTTAGAGAAGAAGAATTTATCCATAGAGATCTTGCAGCTCGTAACTGCCTAGTGGGAGAAAAAC
CATGTGGTAAAAGTGGCTGACTTTGGCTTAAGTAGATTGATGACTGGAGACACTTATACTGCTCATGCTG
GAGCCAAATTTCTATTAAGTGGACAGCACCAGAGAGTCTTGCCACAATACCTTCTCAATTAATCTGA
CGTCTGGGCTTTGGGGTATTGTTGTGGGAAATGCTACCTATGGAATGTCACCATATCCAGGTATTGAC



[View online >](#)

CTGTCTCAGGTCTATGACCTACTAGAAAAAGGATATCGAATGGAACAGCCTGAGGGATGCCCCCTAAGG
TTTATGAACCTTATGAGAGCATGCTGGAAGTGGAGCCCTGCCGATAGGCCCTCTTTTGTGAAACACACCA
AGCTTTTGAAACCATGTTCCATGACTCTAGCATTCTGAAGAGGTAGCTGAGGAACCTGGGAGAGCCGCC
TCCTCGTCATCTGTTGTTCCATACCTGCCCCGGCTACCTATACTTCTTCCAAGACTCGGACACTGAAGA
AACAGGTGGAGAACAAGGAGAACATTGAAGGGGCACAAGATGCCACAGAAAATCTGCTTCCAGTTTAGC
ACCAGGGTTTATCAGAGGTGCACAGGCCCTTAGTGGATCCCCAGCACTGCCTCGAAAGCAAAGAGACAAG
TCACCCAGCAGCCTCTTGGGAAGATGCCAAAGAGACATGCTTACCAGGGATAGGAAGGGGGGCTTCTCA
GCTCCTTCATGAAGAAGAGAAAATGCTCCTACACCCCCAAACGCAGCAGCTCCTTCGAGAAAATGGAGAA
TCAGCCCCATAAGAAAATACGAACTCACGGGTAACCTTCTCATCTGTTGCTTCTCTACAGCATGCTGATGGG
TTCTCTTTCACTCCTGCCAGCAAGAGGCGAATCTGGTGCCACCCAAGTCTATGGGGGAGCTTTGCAC
AGAGGAACCTCTGTAATGACGACGGTGGTGGGGTGGGGCAGTGGCACTGCTGGGGTGGTGGTCTGG
CATCACAGGCTTCTTTACACCACGCTTAATCAAAAAGACACTGGGCTTACGAGCAGGTAACCCACAGCC
AGTGATGACACTTCCAAGCCTTTTCCAAGGTCAAACCTACATCTTCCATGCTCCTCAGGGCTTCCAGAGC
AGGATAGGATGGCAATGACCCTTCCAGGAACTGCCAGAGGTCAAACCTCAGCTGGAAAGGACAGTGTG
CACCTCTTCTCAGCCAGAAGAGAATGTGGACAGGGCCAATGACATGCTTCAAAAAAATCAGAGGAAAGT
GCTGCTCCAAGCAGGGAGAGACAAAAGCCAAGTTATTGCCAGAGGAGCCACAGCTCTTCTCTAGAA
CACCTCTGGGGATCTAGCCATTACAGAGAAGGACCTCCAGGGTGGGAGTGGCTGGAGTGGCAGCTGC
CCCCAAGGGTAAAGAGAAGAATGGTGGGCACGACTTGGGATGGCTGGAGTTCCAGAGGATGGAGAGCAG
CCGGGCTGGCCTTCTCCAGCCAAGGCTGCCCCGCTCCTCCAACCACTACAACCACAAAGTGCCAGTCC
TTATCTCACCCACTCTGAAACACACTCCAGCTGACGTGCAGCTCATTGGCACAGACTCTCAGGGGAATAA
AAGTGTGCCCCACCCACCACCAGTGATGAGACTACTGCAGCATCCGTCCATCTGCTCAGACCTACAG
AAGAGCCAACCTGCCCTAACTGCAGGACAGTCCACATCAGAAAACACAGGAAGGAGGAAAGAAGGCAGCTCT
GGGCGCAGTGCCCATCAGTGGGAAAGCTGGGAGGCCAGTGATGCCCTCACCTCAAGTGCCTCTGCCACA
TCTTCCATCTCGCCAGCCAAAATGGCCAATGGCACAGCAGGTAATAAGTGGCTCTGAGAAAAACCAAAC
AGGCCGCTGAGAAAATCTCAGCAGACAAAATCAGCAAAGAGGCCCTGCTGGAATGTGCTGACCTACTGTC
CAGTGCCTCACGGAACCTGTGCCAACAGCCAGCTGGTAGACTGGACACCAGCTGCTTGACTACTGTC
TCAGGCTATGTGGACTGCATCCCTCAAACCTCGCAACAAATTTGCCTTCGAGAGGCTGTGAGCAAACCTGG
AACTCAGCCTGCAGGAGCTACAGGTTTCTTTCAGCAGCTGCTGGTGTGCCCGGACAAACCCTGCTCTTAA
TAACCTATTGTCATGTGTACAGGAAATCAGTGATGTGGTGCAGAGG

ACGCGTACGCGGCCGCTCGAGCAGAACTCATCTCAGAAGAGGATCTGGCAGCAAATGATATCCTGGATT
ACAAGGATGACGACGATAAGGTTTAA

Protein Sequence: >RC213232 representing NM_007314
Red=Cloning site Green=Tags(s)

```

MGQQVGRVGEAPGLQQPQPRGIRGSSAARPSGRRRDPAGRTTETGFNIFTQHDHFASCVEDGFEGDKTGG
SSPEALHRPYGCDVEPQALNEAIRWSSKENLLGATESDPNLFVALYDFVASGDNTLSITKGEKLRVLGYN
QNGEWSEVRSKNGQGWPVSNYITPVNSLEKHSWYHGVPVRSAAEYLLSSLINGSFLVRESESSPQLSIS
LRYEGRVYHYRINTTADGKVYVTAESRFSTLAELVHHHSTVADGLVTTLHYPAPKCNKPTVYGVSPIDHK
WEMERTDITMKHKLGGGQYGEVYVGVWKKYSLTVAVKTLKEDTMEVEEFLKEAAVMKEIKHPNLVQLLGV
CTLEPPFYIVTEYMPYGNLLDYLRECNREEVAVVLLYMATQISSAMEYLEKKNFIHRDLAARNCLVGEN
HVYKVADFGLSRLMTGDYTAHAGAKFPKWTAPESLAYNTFSIKSDVWAFGVLLWEIATYGMSPYPGID
LSQVYDLEKGYRMEQPEGCPKVVYELMRACWKWSPADRPFAETHQAFETMFHDSSISEEVAEELGRAA
SSSSVVPYLPRLPILPSKTRTLKKQVENKENIEGAQDATENSASSLAPGFIIRGAQASSGSPALPRKQRDK
SPSSLLEDAKETCFTRDRKGGFFSFMKKRNAPTPPKRSSFREMNQPHKKYELTGNFSSVASLQHADG
FSFTPAQQEANLVPPKCYGGSFAQRNLCNDGGGGGGSGTAGGGWSGITGFFTPRLIKKTLGLRAGKPTA
SDDT SKPFPNSNSTSSMSSGLPEQDRMAMTLPRNCQRSLQLERTVSTSSQPEENVDRANDMLPKKSEES
AAPSRRERPKALLPRGATALPLRTPSGDLAITEKDPGPGVAGVAAAPKGEKNGGARLGMAGVPEDGEQ
PGWSPAKAAPVLPPTTHNHKVPVLI SPTLKHTPADVQLIGTDSQGNKFKLLSEHQVTSSGDKDRPRRVK
KCAPPPPPVMRLQHP SICS DPTEPTALTAGQSTSETQEGGKKAALGAVPISGKAGRPVMPPPQVPLPT
SSISPAMANGTAGTKVALRKTQAAEKISADKISKEALLECADLLSSALTEPVNSQLVDTGHQLLDY
SGYVDCIPQTRNKFAFREAVSKLELSLQELQVSSAAAGVPGTNPVNLNLLSCVQEI SDVVQR
  
```

TRTRPLEQKLISEEDLAANDILDYKDDDDKV

Chromatograms: https://cdn.origene.com/chromatograms/mg4754_f05.zip

Restriction Sites: SgfI-MluI

Cloning Scheme:

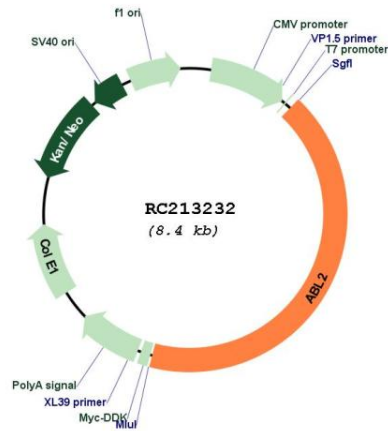


ACCN: NM_007314

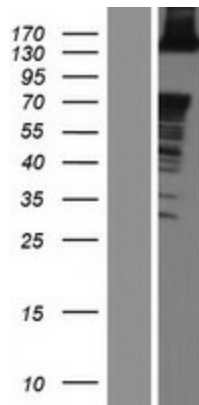
ORF Size: 3546 bp

OTI Disclaimer:	The molecular sequence of this clone aligns with the gene accession number as a point of reference only. However, individual transcript sequences of the same gene can differ through naturally occurring variations (e.g. polymorphisms), each with its own valid existence. This clone is substantially in agreement with the reference, but a complete review of all prevailing variants is recommended prior to use. More info
OTI Annotation:	This clone was engineered to express the complete ORF with an expression tag. Expression varies depending on the nature of the gene.
Components:	The ORF clone is ion-exchange column purified and shipped in a 2D barcoded Matrix tube containing 10ug of transfection-ready, dried plasmid DNA (reconstitute with 100 ul of water).
Reconstitution Method:	<ol style="list-style-type: none">1. Centrifuge at 5,000xg for 5min.2. Carefully open the tube and add 100ul of sterile water to dissolve the DNA.3. Close the tube and incubate for 10 minutes at room temperature.4. Briefly vortex the tube and then do a quick spin (less than 5000xg) to concentrate the liquid at the bottom.5. Store the suspended plasmid at -20°C. The DNA is stable for at least one year from date of shipping when stored at -20°C.
RefSeq:	NM_007314.4
RefSeq Size:	3849 bp
RefSeq ORF:	3549 bp
Locus ID:	27
UniProt ID:	P42684
Cytogenetics:	1q25.2
Domains:	pkinase, SH2, TyrKc, SH3, S_TKc
Protein Families:	Druggable Genome, Protein Kinase
Protein Pathways:	ErbB signaling pathway, Viral myocarditis
MW:	128.2 kDa
Gene Summary:	This gene encodes a member of the Abelson family of nonreceptor tyrosine protein kinases. The protein is highly similar to the c-abl oncogene 1 protein, including the tyrosine kinase, SH2 and SH3 domains, and it plays a role in cytoskeletal rearrangements through its C-terminal F-actin- and microtubule-binding sequences. This gene is expressed in both normal and tumor cells, and is involved in translocation with the ets variant 6 gene in leukemia. Multiple alternatively spliced transcript variants encoding different protein isoforms have been found for this gene. [provided by RefSeq, Nov 2009]

Product images:



Circular map for RC213232



Western blot validation of overexpression lysate (Cat# [LY402128]) using anti-DDK antibody (Cat# [TA50011-100]). Left: Cell lysates from untransfected HEK293T cells; Right: Cell lysates from HEK293T cells transfected with RC213232 using transfection reagent MegaTran 2.0 (Cat# [TT210002]).