

## Product datasheet for **RC213231**

### ZGPAT (NM\_032527) Human Tagged ORF Clone

#### Product data:

Product Type:	Expression Plasmids
Product Name:	ZGPAT (NM_032527) Human Tagged ORF Clone
Tag:	Myc-DDK
Symbol:	ZGPAT
Synonyms:	GPATC6; GPATCH6; KIAA1847; ZC3H9; ZC3HDC9; ZIP
Mammalian Cell Selection:	Neomycin
Vector:	pCMV6-Entry (PS100001)
E. coli Selection:	Kanamycin (25 ug/mL)



[View online »](#)

**ORF Nucleotide Sequence:**

>RC213231 representing NM\_032527  
 Red=Cloning site Blue=ORF Green=Tags(s)

TTTTGTAATACGACTCACTATAGGGCGGCCGGAATTCGTCGACTGGATCCGGTACCGAGGAGATCTGCC  
 GCC**CGGATCGCC**

ATGGACGAGGAGCCTGGAGTCGGCCTTGCAGACCTACCGTGGCAGCTGCAGCAGGTGGAGCTGGCCT  
 TGGGCGCCGGCCTGGATTCTGAGCAGGCTGACCTGCCAGCTGCAGGGGACCTGAAGGAGCTCAT  
 CGAGCTACCCGAGGCCAGCCTGGTGTCTGTGAGGAAGAGCAGCTTGTGGCCGCGCTGGACGAAGAGCGC  
 CCGGGCCGCCAGGAAGATGCTGAGTACCAGGCTTCCGGGAGGCCATCACTGAGGCGGTGGAGGCCACG  
 CAGCGGCCCGTGGGTCCGGATCAGAGACCGTTCCTAAAGCAGAGGCGGGGCCAGAATCTGCGGCAGGTGG  
 GCAGGAGGAGGAAGAGGGAGAGGACGAGGAAGAGCTGAGTGGGACAAAGGTGAGCGGCCCTACTACAGC  
 TCCTGGGGCACTCTGGAGTATCACAAACCCATGGTGGTGGGAACGAAGAGGCGGAGGATGGCTCGGCGG  
 GTGTCCGTGTGCTTACCTGTACCCCACTACAAGTCTCTGAAGCCGTGCCGTTCTTCTGGAGGGAAA  
 GTGCCGCTTAAAGGAACTGCAGTTCTCCCATGGGCAGGTGGTCTCTCTGGATGAGCTGCGCCCTTC  
 CAGGACCCAGACCTGAGCTCCCTGCAGGCGGCTCTGCGTGTCTGGCCAAGCACCAGGATGGCCTCTGGC  
 ACGCAGCACGCATCACCGATGTGGACAACGGCTACTACACAGTCAAGTTTGACTCGCTGCTGCTGAGGGA  
 GGCCGTGGTGGAGGGGACGGCATCCTGCCCCACTGCGCACAGAGGCCACAGAGTCCGACTCAGACAGC  
 GACGGTACGGGTGACTCCAGCTATGCCAGAGTGGTGGGTGGGACGCCGTGGACTCTGCACAGTCTCTG  
 CCCTCTGTCCGTCTCTTGCAGTGGTGGGTGAGTGTGTGGACTCTGGGACCTGCAGCTCTGCCTTTGC  
 TGGCTGGGAGGTGCACACGCGAGGTATAGGCTCCAGACTCCTACCAAGATGGGCTATGAGTTTGGCAAG  
 GGTTTGGGCCGACACGCGGAAGGCCGGTGGAGCCCATCCATGCTGTGGTGTTCCTCGAGGGAAGTCGC  
 TGGACCAAGTGTGTGGAGACCTGCAGAAGCAGACAGGTTGGCAAGGCTGGCACCACAAGCCCCCAG  
 GTGCCGGGAAGAGGGGCCAGGCTGGGGCCGCCAGCTCCTCGGAATGTGTTTGACTTCTCAATGAA  
 AAGCTGCAAGGTCAAGCTCCTGGGGCCCTAGAAGCCGGGCGGCCCCAGCGGGGAGGAGGCAAGGACA  
 TGTACCATGCCAGCAAGAGTGCCAAGCGGGCCCTGAGCCTGCGGCTCTTCCAGACTGAGGAGAAGATCGA  
 GCGAACCCAGCGGACATCAGGAGCATCCAGGAGGCTCTCGCCGCAACGCTGGCCGGCATAGCGTGGCG  
 TCAGCCCAGCTGCAGGAGAAGCTGGCAGGAGCCAGCGCCAGCTGGGCAGCTCCGGGCTCAGGAAGCCG  
 GCCTGCAGCAGGAGCAGAGGAAGGCAGACACCCACAAGAAGATGACTGAGTTC

**ACGCGT**ACGCGGCCGCTCGAGCAGAACTCATCTCAGAAGAGGATCTGGCAGCAAATGATATCTGGATT  
 ACAAGGATGACGACGATAAGGTTTAA

**Protein Sequence:**

>RC213231 representing NM\_032527  
 Red=Cloning site Green=Tags(s)

MDEESLESALQTYRAQLQQVELALGAGLDSSEQADLRQLQGDLELIELTEASLVSVRKSLLAALDEER  
 PGRQEDAEYQAFREAITAEVEAPAAARGSGSETPKAEAGPESAAGGQEEEEGEDEEELSGTKVSAPYYS  
 SWGTLEYHNAMVVGTEEAEDGSAGVRVLYLYPTHKSLKPCPFLEGGKCRFKENCRFVSHGQVVSDELRF  
 QDPDLSSLQAGSACLAKHQDGLWHAARITDVDNGYYTVKFDLSLLREAVVEGDGILPPLRTEATESDSDS  
 DGTGDSYARVVGSDAVIDSAQSSALCPSLAVVGSDAVDSGTSSAFAGWEVHTRGIGSRLTKMGYEFK  
 GLGRHAEGRVEPIHAVVLPKSLDQCVETLQKQTRVKGAGTNKPPRCRGRGARPGRAPRNVDFLNE  
 KLQGGAPGALEAGAAPAGRRSKDMYHASKAKRALSLRLFQTEEKIERTQRDIRSIQEALARNAGRHSVA  
 SAQLQEKLAGAQRQLGQLRAQEAGLQEQQRKADTHKKMTEF

**TRTRPLEQKLI**SEEDLAANDILDYKDDDDKV

**Restriction Sites:**

Sgfl-MluI

**Cloning Scheme:**

**ACCN:** NM\_032527

**ORF Size:** 1593 bp

**OTI Disclaimer:** Due to the inherent nature of this plasmid, standard methods to replicate additional amounts of DNA in E. coli are highly likely to result in mutations and/or rearrangements. Therefore, OriGene does not guarantee the capability to replicate this plasmid DNA. Additional amounts of DNA can be purchased from OriGene with batch-specific, full-sequence verification at a reduced cost. Please contact our customer care team at [custsupport@origene.com](mailto:custsupport@origene.com) or by calling 301.340.3188 option 3 for pricing and delivery.

The molecular sequence of this clone aligns with the gene accession number as a point of reference only. However, individual transcript sequences of the same gene can differ through naturally occurring variations (e.g. polymorphisms), each with its own valid existence. This clone is substantially in agreement with the reference, but a complete review of all prevailing variants is recommended prior to use. [More info](#)

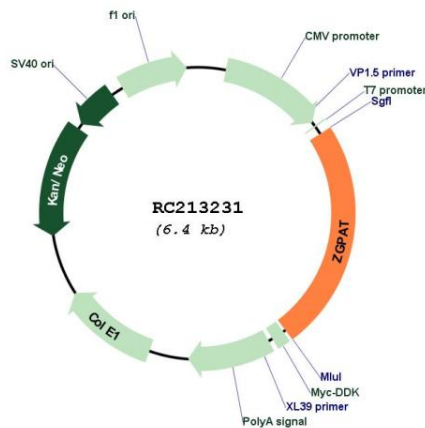
**OTI Annotation:** This clone was engineered to express the complete ORF with an expression tag. Expression varies depending on the nature of the gene.

**Components:** The ORF clone is ion-exchange column purified and shipped in a 2D barcoded Matrix tube containing 10ug of transfection-ready, dried plasmid DNA (reconstitute with 100 ul of water).

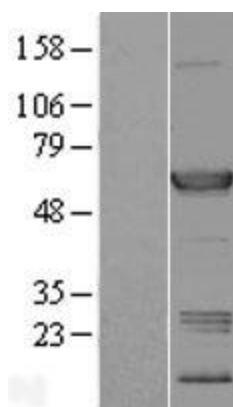
- Reconstitution Method:**
1. Centrifuge at 5,000xg for 5min.
  2. Carefully open the tube and add 100ul of sterile water to dissolve the DNA.
  3. Close the tube and incubate for 10 minutes at room temperature.
  4. Briefly vortex the tube and then do a quick spin (less than 5000xg) to concentrate the liquid at the bottom.
  5. Store the suspended plasmid at -20°C. The DNA is stable for at least one year from date of shipping when stored at -20°C.

RefSeq:	<u>NM_032527.4</u>
RefSeq Size:	1997 bp
RefSeq ORF:	1596 bp
Locus ID:	84619
UniProt ID:	<u>Q8N5A5</u>
Cytogenetics:	20q13.33
Domains:	G-patch, zf-CCCH
MW:	57.2 kDa
Gene Summary:	Transcription repressor that specifically binds the 5'-GGAG[GA]A[GA]A-3' consensus sequence. Represses transcription by recruiting the chromatin multiprotein complex NuRD to target promoters. Negatively regulates expression of EGFR, a gene involved in cell proliferation, survival and migration. Its ability to repress genes of the EGFR pathway suggest it may act as a tumor suppressor. Able to suppress breast carcinogenesis.[UniProtKB/Swiss-Prot Function]

**Product images:**



Circular map for RC213231



Western blot validation of overexpression lysate (Cat# [LY410058]) using anti-DDK antibody (Cat# [TA50011-100]). Left: Cell lysates from untransfected HEK293T cells; Right: Cell lysates from HEK293T cells transfected with RC213231 using transfection reagent MegaTran 2.0 (Cat# [TT210002]).