

## Product datasheet for **RC213224**

### **SPIN2B (NM\_001006683) Human Tagged ORF Clone**

#### Product data:

**Product Type:** Expression Plasmids  
**Product Name:** SPIN2B (NM\_001006683) Human Tagged ORF Clone  
**Tag:** Myc-DDK  
**Symbol:** SPIN2B  
**Synonyms:** dj323P24.2; SPIN-2; SPIN-2B; SPIN2\_duplicate; TDRD26  
**Mammalian Cell Selection:** Neomycin  
**Vector:** pCMV6-Entry (PS100001)  
**E. coli Selection:** Kanamycin (25 ug/mL)  
**ORF Nucleotide Sequence:** >RC213224 ORF sequence  
**Red=Cloning site Blue=ORF Green=Tags(s)**

TTTTGTAATACGACTCACTATAGGGCGCCGGGAATTCGTCGACTGGATCCGGTACCGAGGAGATCTGCC  
GCC**CGATCGCC**

ATGAAGACCCCAACGCACAGGAAGCCGAAGGGCAACAAACCAGGGCAGCTGCAGGACGGGCCACTGGGT  
CTGCAAACATGACAAAGAAAAAGTCTCCAAAAGAAGCAGAGAGGCCGACCTTCATCCCAGCCCCGCAG  
GAACATCGTGGGCTGCAGAATTTCTCATGGATGGAAGGAAGGAGATGAGCCCATCACGCAGTGAAAGGA  
ACGTTCTGGATCAGGTGCCTATAAATCCCTCTCTTTATCTGGTAAATATGATGGAATTGACTGTGTCT  
ATGGACTGGAACCTCACAGAGATGAAAGGGTTTTGTCTCTAAAATTCTTTCTGACAGGGTGGCATCATC  
TCACATTAGTGATGCCAACCTTGCAAATACCATAATTGGCAAAGCAGTGGAACATATGTTTGAGGGAGAG  
CATGGTTCTAAGGATGAATGGAGGGGGATGGTCTTAGCTCAAGCACCTATCATGAAAGCCTGGTTTTATA  
TTACCTATGAGAAAGATCCTGTCTTGTACATGTACCAGCTTCTAGATGATTATAAGGAAGGTGACCTCCG  
CATCATGCCAGAATCCAGTGAGTCTCCTCCAACAGAGAGGGAGCCAGGAGGAGTTGTAGATGGCCTAATA  
GGTAAGCATGTGGAATATACAAAGAAGATGGCTCCAAAAGGATCGGCATGGTCATTACCAAGTGGAAAG  
CCAAACCCTCTGTGATTTTCATCAAGTTTGATGATGATTTCCATATCTATGTCTACGATTTGGTAAAAA  
GTCC

**ACGCGT**ACGCGGCCGCTCGAGCAGAAACTCATCTCAGAAGAGGATCTGGCAGCAAATGATATCCTGGATT  
ACAAGGATGACGACGATAAGGTTTAA



[View online »](#)

**Protein Sequence:** >RC213224 protein sequence  
Red=Cloning site Green=Tags(s)

MKTPNAQEAEQQQTRAAAGRATGSANMTKKKVSQKKQRGRPSSQPRRNI VGRISHGWKEGDEPITQWKG  
 TVLDQVPINPSL YLVKYDGDICVYGLELHRDERVL SLKILSDRVASSHISANLANLANTIIGKAVEHMFEGE  
 HGSKDEWRGMVLAQAPIMKAWFYITYEKDPLV YMYQLDDYKEGDLRIMPESSESPPTEREPGGVVDGLI  
 GKHVEYTKEDGSKRIGMVIHQVEAKPSVYFIKFDDDFHIYVYDLVKKS

TRTRPLEQKLISEEDLAANDILDYKDDDDKV

**Chromatograms:** [https://cdn.origene.com/chromatograms/mk6543\\_b05.zip](https://cdn.origene.com/chromatograms/mk6543_b05.zip)

**Restriction Sites:** SgfI-MluI

**Cloning Scheme:**



**ACCN:** NM\_001006683

**ORF Size:** 774 bp

**OTI Disclaimer:** The molecular sequence of this clone aligns with the gene accession number as a point of reference only. However, individual transcript sequences of the same gene can differ through naturally occurring variations (e.g. polymorphisms), each with its own valid existence. This clone is substantially in agreement with the reference, but a complete review of all prevailing variants is recommended prior to use. [More info](#)

**OTI Annotation:** This clone was engineered to express the complete ORF with an expression tag. Expression varies depending on the nature of the gene.

**Components:** The ORF clone is ion-exchange column purified and shipped in a 2D barcoded Matrix tube containing 10ug of transfection-ready, dried plasmid DNA (reconstitute with 100 ul of water).

**Reconstitution Method:**

1. Centrifuge at 5,000xg for 5min.
2. Carefully open the tube and add 100ul of sterile water to dissolve the DNA.
3. Close the tube and incubate for 10 minutes at room temperature.
4. Briefly vortex the tube and then do a quick spin (less than 5000xg) to concentrate the liquid at the bottom.
5. Store the suspended plasmid at -20°C. The DNA is stable for at least one year from date of shipping when stored at -20°C.

**Note:** Plasmids are not sterile. For experiments where strict sterility is required, filtration with 0.22um filter is required.

**RefSeq:** [NM\\_001006683.1](#), [NP\\_001006684.1](#)

**RefSeq Size:** 1216 bp

**RefSeq ORF:** 777 bp

**Locus ID:** 474343

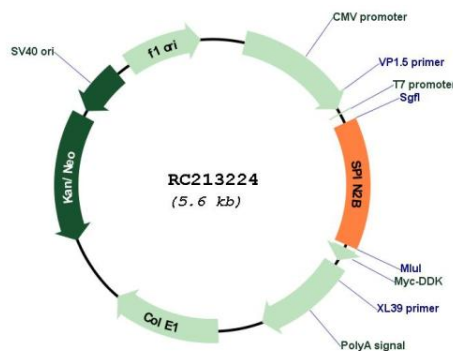
**UniProt ID:** [Q9BPZ2](#)

**Cytogenetics:** Xp11.21

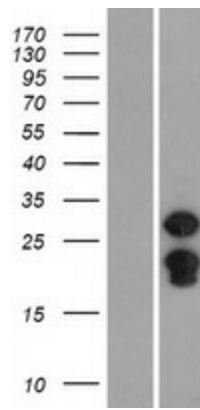
**MW:** 29.2 kDa

**Gene Summary:** Involved in the regulation of cell cycle progression, this activity is related to the inhibition of apoptosis following the removal of essential growth factors (PubMed:12145692). Exhibits H3K4me3-binding activity (PubMed:29061846).[UniProtKB/Swiss-Prot Function]

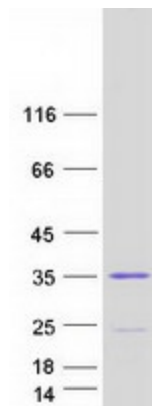
**Product images:**



Circular map for RC213224



Western blot validation of overexpression lysate (Cat# [LY423549]) using anti-DDK antibody (Cat# [TA50011-100]). Left: Cell lysates from untransfected HEK293T cells; Right: Cell lysates from HEK293T cells transfected with RC213224 using transfection reagent MegaTran 2.0 (Cat# [TT210002]).



Coomassie blue staining of purified SPIN2B protein (Cat# [TP313224]). The protein was produced from HEK293T cells transfected with SPIN2B cDNA clone (Cat# RC213224) using MegaTran 2.0 (Cat# [TT210002]).