

## Product datasheet for RC213204

### NXT2 (NM\_018698) Human Tagged ORF Clone

#### Product data:

Product Type:	Expression Plasmids
Product Name:	NXT2 (NM_018698) Human Tagged ORF Clone
Tag:	Myc-DDK
Symbol:	NXT2
Synonyms:	P15-2
Mammalian Cell Selection:	Neomycin
Vector:	pCMV6-Entry (PS100001)
E. coli Selection:	Kanamycin (25 ug/mL)
ORF Nucleotide Sequence:	>RC213204 ORF sequence Red=Cloning site Blue=ORF Green=Tags(s)

TTTTGTAATACGACTCACTATAGGGCGGCCGGAATTCGTCGACTGGATCCGGTACCGAGGAGATCTGCC  
GCC**CGATCGCC**

ATGAGAAAATACAGAAGCCACTGGTCTCAGGGAGACAGAGAACGATACCAAAGAAGAAGTAACTATTATG  
AGGGGCCACACACCAGCCACTCAAGCCCTGCGGACCGGACACGTGAGGAGGTAGTGACGCCGACACTGCC  
AGAACACACTGCTACAAGGTCCCAGATGGCCACGTCTCTGGATTTTAAAACCTTATGTAGATCAGGCATGT  
AGAGCTGCTGAGGAGTTTGTCAATTTACTATGAGACAATGGATAAAAAGAAGACGGGCGACTAACCAGGC  
TGATCTGGACAAGGCCACCTTAATATGGAATGGAAATGCTGTTTCAGGGCTGGATGCCCTAAATAATTT  
TTTTGACACATTGCCTTCTAGTGAGTTCAGGTC AATATGTTAGATTGCCAACCGTTTCATGAGCAAGCA  
ACTCAGTCCCAAACACTACAGTTCTTGTGTGACCAGTGGAACTGTGAAGTTTGATGGAAACAACAACATT  
TCTTCAACCAGAACTTCTGCTGACTGCTCAGTCCACTCCAACAATACTGTGTGGAAGATTGCAAGTGA  
TTGCTTCCGTTTTCAAGATTGGTCTAGTAGT

**ACGCGT**ACGCGGCCGCTCGAGCAGAACTCATCTCAGAAGAGGATCTGGCAGCAAATGATATCCTGGATT  
ACAAGGATGACGACGATAAGGTTTAA

Protein Sequence:	>RC213204 protein sequence Red=Cloning site Green=Tags(s)
-------------------	--------------------------------------------------------------

MRKYRSHWSQGDREYQRRSNYYEGPHTSHSSPADRTREEVVTPLPEHTATRSQMATSLDFKTYVDQAC  
RAAEFVNIYYETMDKRRRALTRLYLDKATLIWNGNAVSGLDALNNFFDTLPSSEFQVNMLDCQPVHEQA  
TQSQTTLVVTSQVTKFDGNKQHFNFNQLLTAQSTPNNTVWKIASDCFRFQDWSSS

**TRTRPLEQKLI**SEEDLAANDILDYKDDDDKV



[View online »](#)

**Chromatograms:** [https://cdn.origene.com/chromatograms/mk6443\\_b10.zip](https://cdn.origene.com/chromatograms/mk6443_b10.zip)

**Restriction Sites:** SgfI-MluI

**Cloning Scheme:**



**ACCN:** NM\_018698

**ORF Size:** 591 bp

**OTI Disclaimer:** The molecular sequence of this clone aligns with the gene accession number as a point of reference only. However, individual transcript sequences of the same gene can differ through naturally occurring variations (e.g. polymorphisms), each with its own valid existence. This clone is substantially in agreement with the reference, but a complete review of all prevailing variants is recommended prior to use. [More info](#)

**OTI Annotation:** This clone was engineered to express the complete ORF with an expression tag. Expression varies depending on the nature of the gene.

**Components:** The ORF clone is ion-exchange column purified and shipped in a 2D barcoded Matrix tube containing 10ug of transfection-ready, dried plasmid DNA (reconstitute with 100 ul of water).

**Reconstitution Method:**

1. Centrifuge at 5,000xg for 5min.
2. Carefully open the tube and add 100ul of sterile water to dissolve the DNA.
3. Close the tube and incubate for 10 minutes at room temperature.
4. Briefly vortex the tube and then do a quick spin (less than 5000xg) to concentrate the liquid at the bottom.
5. Store the suspended plasmid at -20°C. The DNA is stable for at least one year from date of shipping when stored at -20°C.

**RefSeq:** [NM\\_018698.5](#)

**RefSeq Size:** 2713 bp

**RefSeq ORF:** 594 bp

**Locus ID:** 55916

UniProt ID: [Q9NPJ8](#)

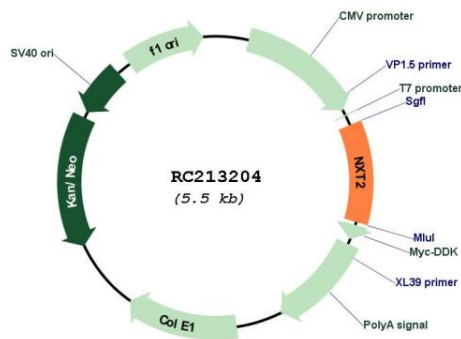
Cytogenetics: Xq23

Domains: NTF2

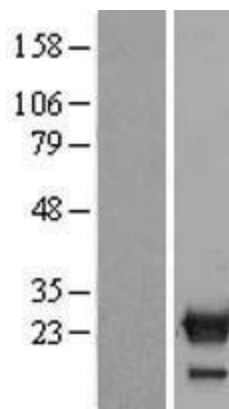
MW: 22.8 kDa

**Gene Summary:** The protein encoded by this gene contains a nuclear transport factor 2 (NTF2) domain, which plays an important role in the trafficking of macromolecules, ions, and small molecules between the cytoplasm and nucleus. This protein may also have a role in mRNA nuclear export. Alternatively spliced transcript variants encoding different isoforms have been noted for this gene. [provided by RefSeq, Jun 2011]

**Product images:**



Circular map for RC213204



Western blot validation of overexpression lysate (Cat# [LY412893]) using anti-DDK antibody (Cat# [TA50011-100]). Left: Cell lysates from untransfected HEK293T cells; Right: Cell lysates from HEK293T cells transfected with RC213204 using transfection reagent MegaTran 2.0 (Cat# [TT210002]).