

## Product datasheet for RC213192

### TMEM184A (NM\_001097620) Human Tagged ORF Clone

#### Product data:

Product Type:	Expression Plasmids
Product Name:	TMEM184A (NM_001097620) Human Tagged ORF Clone
Tag:	Myc-DDK
Symbol:	TMEM184A
Synonyms:	SDMG1
Mammalian Cell Selection:	Neomycin
Vector:	pCMV6-Entry (PS100001)
E. coli Selection:	Kanamycin (25 ug/mL)
ORF Nucleotide Sequence:	>RC213192 representing NM_001097620 Red=Cloning site Blue=ORF Green=Tags(s)

TTTTGTAATACGACTCACTATAGGGCGGCCGGAATTCGTCGACTGGATCCGGTACCGAGGAGATCTGCC  
GCC**CGATCGCC**

ATGAGTAATGTCTCAGGGATCCTGGAGACAGCCGGCTCCCCCTGGTGTGACGGAAGTGGCCGAGCCCA  
GCCCCCACCAGGCTGTGCCAGCTGGGCCGAGATGGACCACATGGGGAACAGCTCCAGGGGGCCCCCTG  
GCTTTTCTCACCTCCGACTGGCCGAGGCGTCTCGGGATCTTCGTGTGGACTGCCCTGGTGTCTCACC  
TGCCACCAGATCTATCTGCACCTGCGCTCTACACCGTCCACAGGAGCAACGTTACATCATCCGCTGC  
TCCTCATCGTGCCATCTACGCCTTCGACTCCTGGCTCAGCCTCCTCCTCGGAGACCACCAGTACTA  
CGTCTACTTCGACTCTGTGCGGGACTGCTACGAAGCCTTTGTCAATTTACAGCTTCCTGAGCTGTGTTT  
CAGTACCTGGGAGGCGAGGGCGCCATCATGGCTGAGATTTCGTGGAAAGCCATCAAGTCCAGCTGCTTGT  
ACGGCACCTGCTGCCTCCGGGGCATGACCTACTCCATCGGGTTCTGCGCTTCTGTAAGCAGGCCACTCT  
GCAGTTTGCCTGGTGAAGCCCGTATGGCCGTACCACCATCATCTCCAGGCATTTGGCAAAATACCAC  
GACGGGGACTTCAATGTCCGAGCGGCTACCTCTATGTGACCCTCATCTACAACGCTCCGTGAGCCTCG  
CCCTCTACGCCCTGTTCTTCTTACTTACCACCAGGGAGCTCCTGCGGCCCTCCAGCCCGTCTCAA  
GTTCTCACCATCAAAGCCGTATCTTCTGTGTTCTGGCAAGGGCTGCTGCTGCCATCCTGGAGCGG  
TGCGGGTTCATCCGGAGGTGGAGACCAGCGCGGGAACAAGTGGGGCTGGCAGCTGGCCCGCCGGCT  
ACCAGAACTTCATCATCTGCGTGGAGATGCTGTTGCGCTCCGTGGCCCTGCGTTATGCCTTCCCCTGCCA  
GGTGTACGCAGAGAAGAAGGAGAATTCACCAGCCCCCGGCACCCATGCAGAGCATCTCCAGCGCATC  
AGGGAGACAGTGAGCCCCAGGACATCGTGCAGGACGCCATCCACAATTCTCCCCGCCTACCAGCACT  
ACACGCAGCAGGCCACGCACGAGGCGCCAGGCCCGGCACCCACCCAGCGGCGGCTCCGGCGGGAGCAG  
GAAGAGCCGGAGCTGGAGAAGCGGATGCTGATCCCCTCGGAGGACCTG

**ACGCGT**ACGCGGCCGCTCGAGCAGAACTCATCTCAGAAGAGGATCTGGCAGCAAATGATATCCTGGATT  
ACAAGGATGACGACGATAAGGTTTAA



[View online >](#)

**Protein Sequence:** >RC213192 representing NM\_001097620  
Red=Cloning site Green=Tags(s)

MSNVSGILETAGVPLVSANWPQSPPPAVPAGPQMDHMGNSSQGAPWLFLTSALARGVSGIFVWTALVLT  
 CHQIYLHLRSYTPQEQRYYIIRLLLLIVPIYAFDSWLSLLLLGDHQYVVYFDSVRDCYEFVIYSFLSLCF  
 QYLGEGEAIMAEIRGKPIKSSCLYGTCCLRGMTYSIGFLRFCKQATLQFCLVKPVMAVTIIILQAFGKYH  
 DGDENVRSGLYVTLIYNASVSLALYALFLFYFTTRELLRPFQPVKFLTIKAVIFLSFWQGLLLAILER  
 CGVIPEVETSGGNKLGAGTLAAGYQNFIIICVEMLFASVALRYAFPCQVYAEKKENSPAPPAPMQSISSGI  
 RETVSPQDIVQDAIHNFSPAYQHYTQQATHEAPRPGTHPSGGSGGSRKRSRLEKRMLIPSEDL

TRTRPLEQKLISEEDLAANDILDYKDDDDKV

**Chromatograms:** [https://cdn.origene.com/chromatograms/mk8104\\_a11.zip](https://cdn.origene.com/chromatograms/mk8104_a11.zip)

**Restriction Sites:** SgfI-MluI

**Cloning Scheme:**



\* The last codon before the Stop codon of the ORF

**ACCN:** NM\_001097620

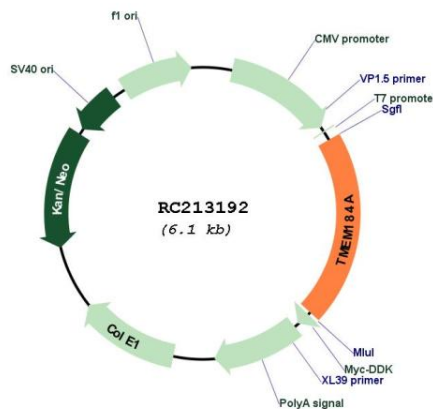
**ORF Size:** 1239 bp

**OTI Disclaimer:** Due to the inherent nature of this plasmid, standard methods to replicate additional amounts of DNA in E. coli are highly likely to result in mutations and/or rearrangements. Therefore, OriGene does not guarantee the capability to replicate this plasmid DNA. Additional amounts of DNA can be purchased from OriGene with batch-specific, full-sequence verification at a reduced cost. Please contact our customer care team at [custsupport@origene.com](mailto:custsupport@origene.com) or by calling 301.340.3188 option 3 for pricing and delivery.

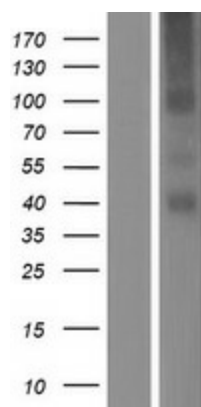
The molecular sequence of this clone aligns with the gene accession number as a point of reference only. However, individual transcript sequences of the same gene can differ through naturally occurring variations (e.g. polymorphisms), each with its own valid existence. This clone is substantially in agreement with the reference, but a complete review of all prevailing variants is recommended prior to use. [More info](#)

<b>OTI Annotation:</b>	This clone was engineered to express the complete ORF with an expression tag. Expression varies depending on the nature of the gene.
<b>Components:</b>	The ORF clone is ion-exchange column purified and shipped in a 2D barcoded Matrix tube containing 10ug of transfection-ready, dried plasmid DNA (reconstitute with 100 ul of water).
<b>Reconstitution Method:</b>	<ol style="list-style-type: none"><li>1. Centrifuge at 5,000xg for 5min.</li><li>2. Carefully open the tube and add 100ul of sterile water to dissolve the DNA.</li><li>3. Close the tube and incubate for 10 minutes at room temperature.</li><li>4. Briefly vortex the tube and then do a quick spin (less than 5000xg) to concentrate the liquid at the bottom.</li><li>5. Store the suspended plasmid at -20°C. The DNA is stable for at least one year from date of shipping when stored at -20°C.</li></ol>
<b>RefSeq:</b>	<a href="#">NM_001097620.2</a>
<b>RefSeq Size:</b>	6293 bp
<b>RefSeq ORF:</b>	1242 bp
<b>Locus ID:</b>	202915
<b>UniProt ID:</b>	<a href="#">Q6ZMB5</a>
<b>Cytogenetics:</b>	7p22.3
<b>Protein Families:</b>	Transmembrane
<b>MW:</b>	45.8 kDa
<b>Gene Summary:</b>	Acts as a heparin receptor in vascular cells (By similarity). May be involved in vesicle transport in exocrine cells and Sertoli cells (By similarity).[UniProtKB/Swiss-Prot Function]

### Product images:



Circular map for RC213192



Western blot validation of overexpression lysate (Cat# [LY420405]) using anti-DDK antibody (Cat# [TA50011-100]). Left: Cell lysates from untransfected HEK293T cells; Right: Cell lysates from HEK293T cells transfected with RC213192 using transfection reagent MegaTran 2.0 (Cat# [TT210002]).